



# T-Mobile Huawei Prism U8651T LCD Replacement

How to replace the LCD on your phone.

Written By: Dillon



---

## INTRODUCTION

If you are running into issues with the LCD not working properly on your T-Mobile Huawei Prism U8651T LCD, this guide will show you how to replace it.

---

### TOOLS:

- [iFixit Opening Tools](#) (1)
  - [T4 Torx Screwdriver](#) (1)
-

## Step 1 — Remove Back Cover Panel



- Place the phone face down.
- Slide the back cover panel away from you, until you hear a click.
- Lift the back cover panel off.

## Step 2 — Remove Battery



- Place the [plastic opening tool](#) in the gap between the camera and battery.
- Pry the battery up.
- Remove the battery.

## Step 3 — Torx Screws



- Locate the six 3mm torx screws holding the plastic mid frame in place.
- Remove the six torx screws with the [T4 torx screwdriver](#).

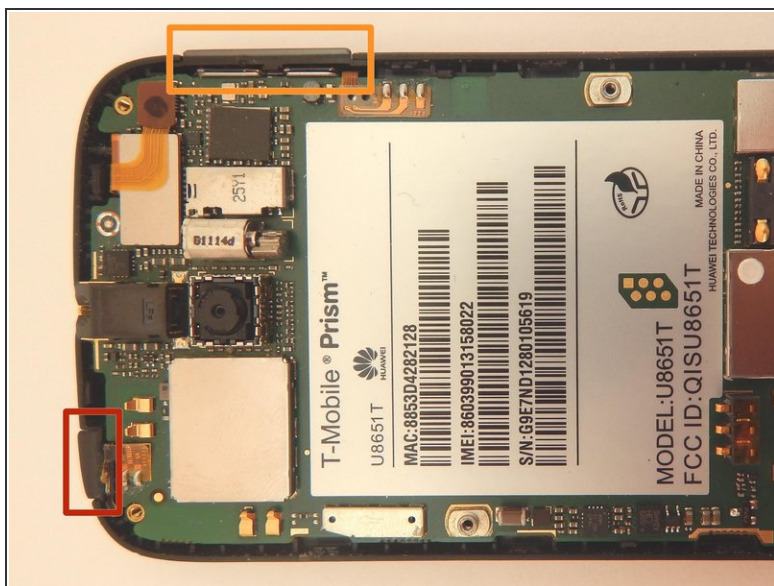
## Step 4 — Remove Plastic Mid Frame



- Place the [plastic opening tool](#) in the charging port.
- Pry up to loosen the bottom edge of the plastic mid frame.
- Work the [plastic opening tool](#) along the seam, until the the plastic mid frame is detached.
- Remove the plastic mid frame.



## Step 5 — Remove Power and Volume Buttons



- Locate the power button.
  - Locate the volume button.
  - Slide the two buttons up and out of the phone.
- ⚠ The removed buttons are incredibly easy to lose, so be sure to keep an eye on them.

## Step 6 — Remove Power Button Sensor Strip



- Locate the power button sensor strip.
- Place the [plastic opening tool](#) under the sensor strip.
- Pry the sensor strip up.

## Step 7 — Remove Volume Button Sensor Strip



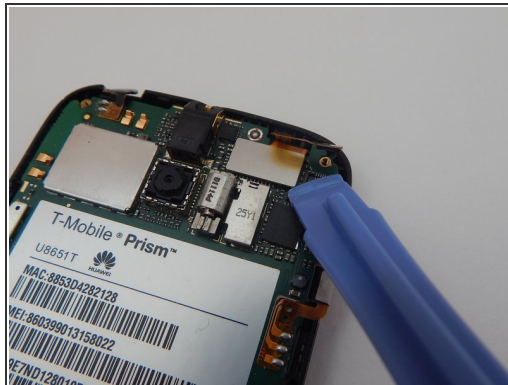
- Locate the volume button sensor strip.
- Place the [plastic opening tool](#) under the sensor strip.
- Pry the sensor strip up.

## Step 8 — Remove Outer Screen Connector



- Locate the outer screen connector.
- Place the [plastic opening tool](#) under the screen connector.
- Pry the screen connector up.

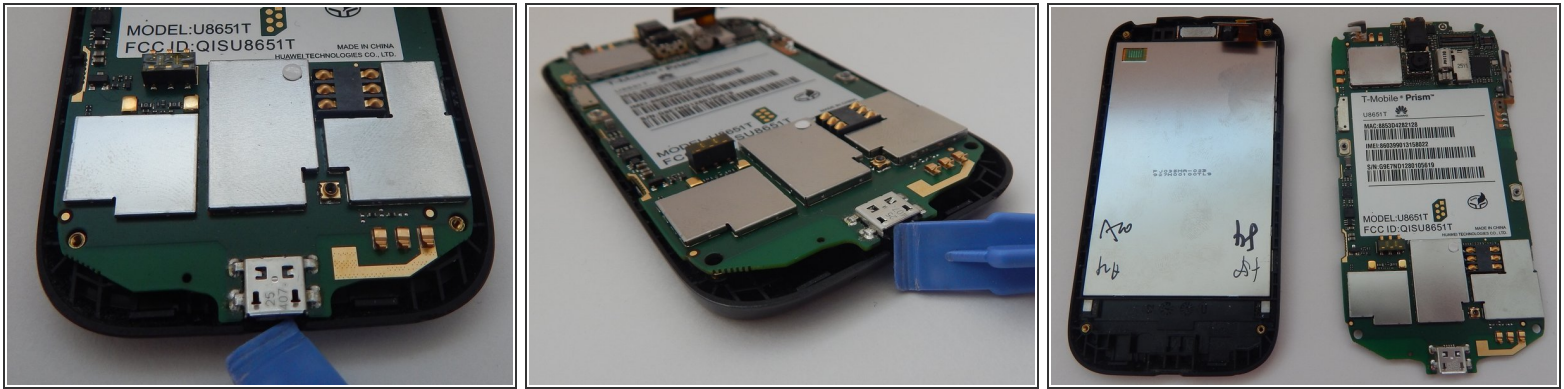
## Step 9 — Remove Inner Screen Connector



- Locate the inner screen connector.
- Place the [plastic opening tool](#) under the screen connector.
- Pry the screen connector up.

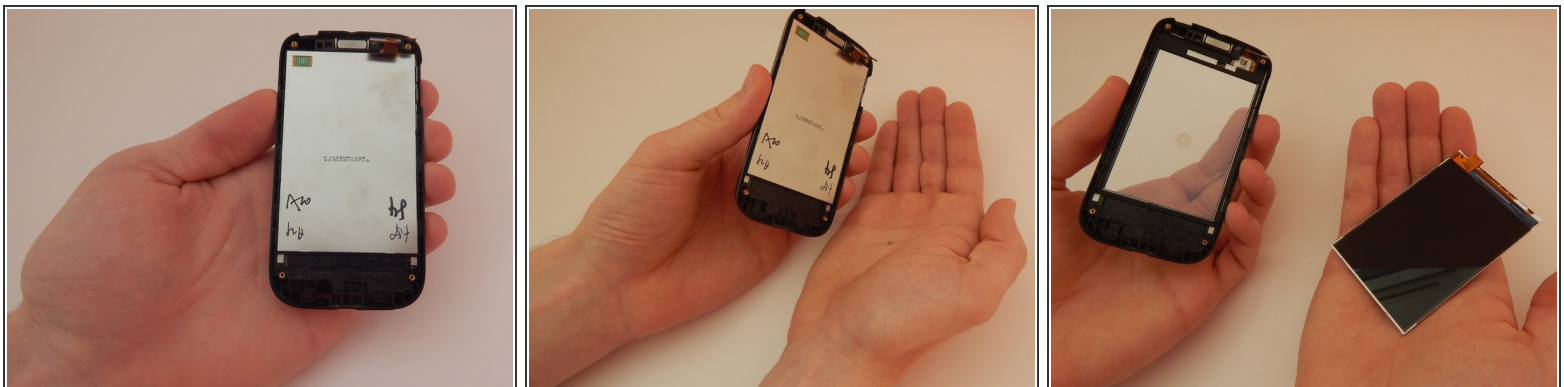


## Step 10 — Remove Motherboard



- Place the [plastic opening tool](#) in the charger port.
- Pry the motherboard up.
- Remove the motherboard.

## Step 11 — Remove Screen



- Pick up the front half of your phone with your left hand.
- Slowly rotate the phone so the screen falls into your right hand.

⚠ Be extremely careful not to drop the screen.

To reassemble your device, follow these instructions in reverse order.