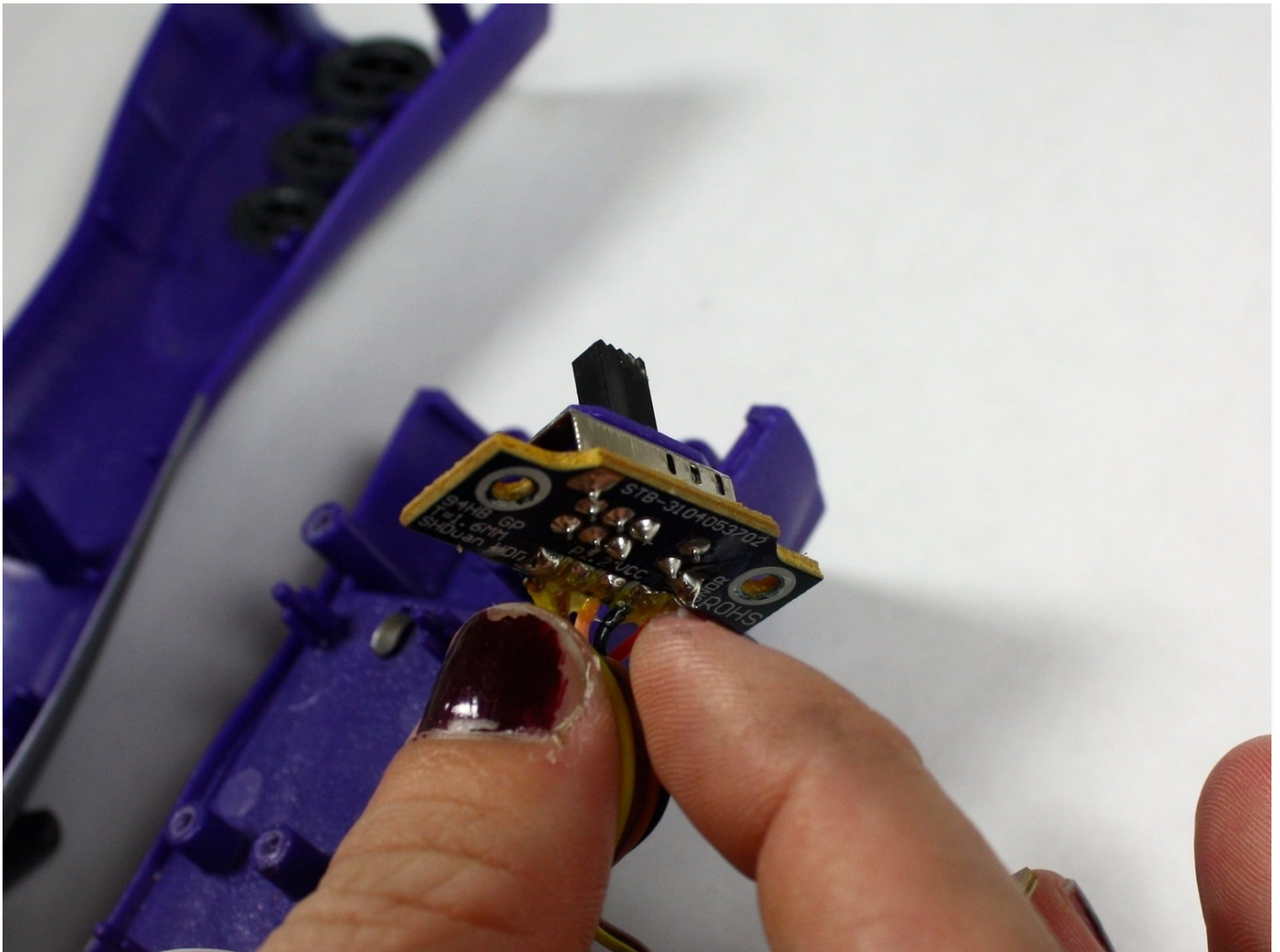




# Justin Bieber Concert Microphone On/Off Switch Replacement

The On/Off Switch for the Justin Bieber Concert...

Written By: Mike Seyman



# INTRODUCTION

The On/Off Switch for the Justin Bieber Concert Microphone allows the user to turn the device on and off. This is important to save battery and allow proper use of the device.

---

## TOOLS:

[Flathead 3/32" or 2.5 mm Screwdriver](#) (1)

[Phillips #00 Screwdriver](#) (1)

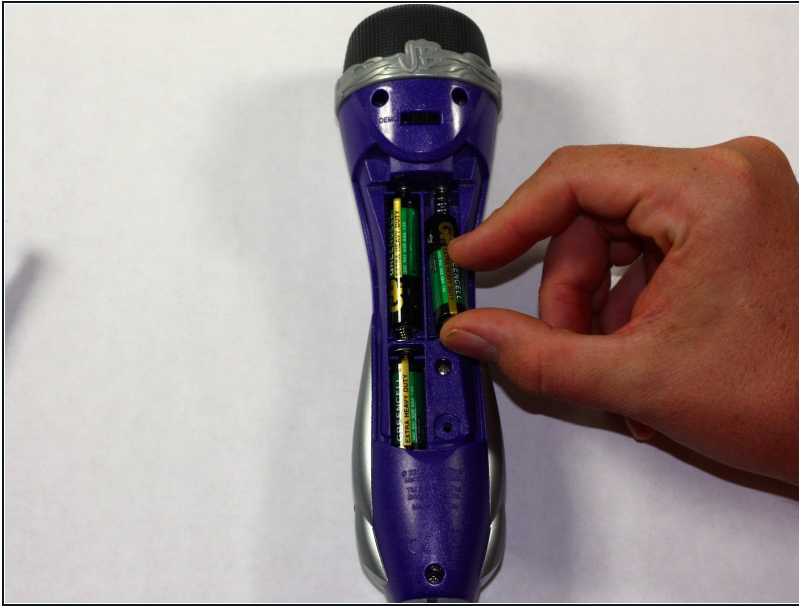
---

### Step 1 — Removing back panel



- Remove the back panel of the device by unscrewing the single #8 1[1.6 mm Flathead](#) screw on the back of the device.

## Step 2 — Removing batteries



- Remove the 3 AAA batteries from the device.

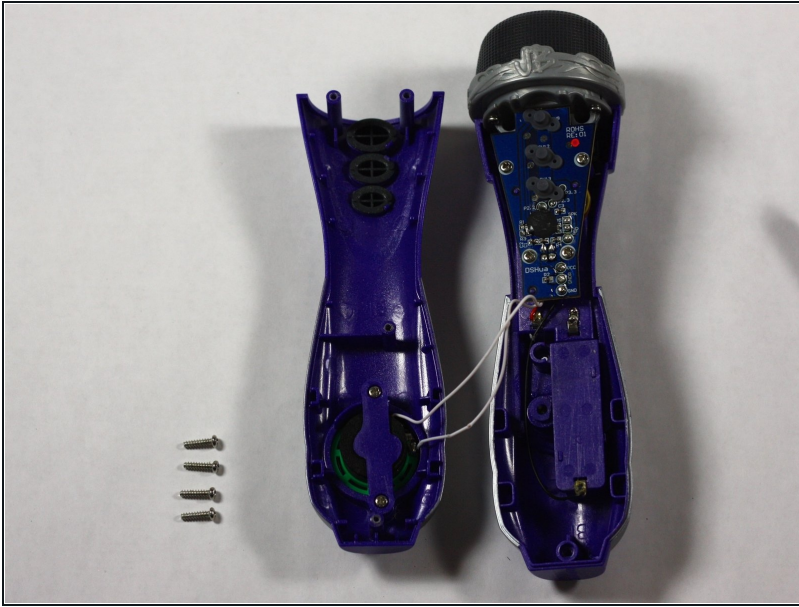
## Step 3 — Removing back half of device



- Unscrew the other 4, #8 11.6 mm Phillips Head screws to remove the entire back half of the device.
- Pull apart the device once screws are loose, splitting the device in half.

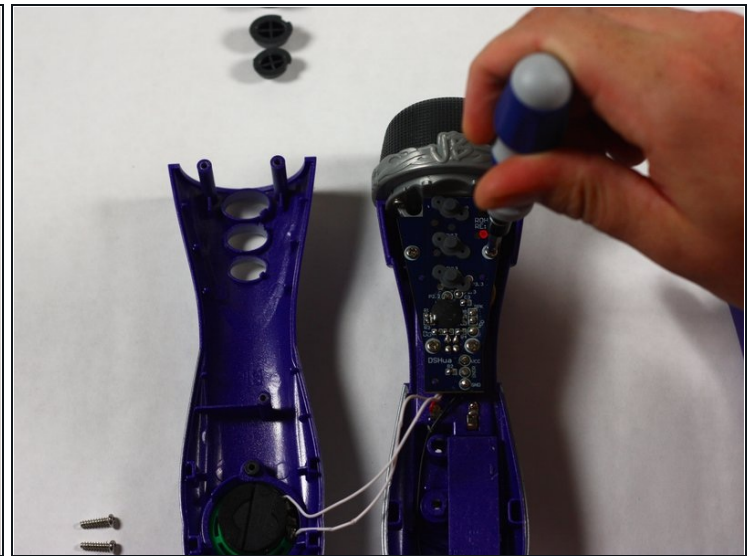
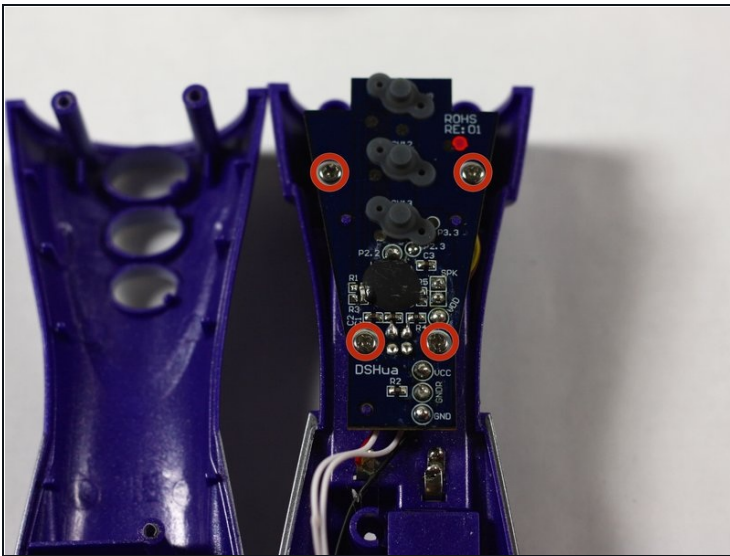


## Step 4 — Positioning device



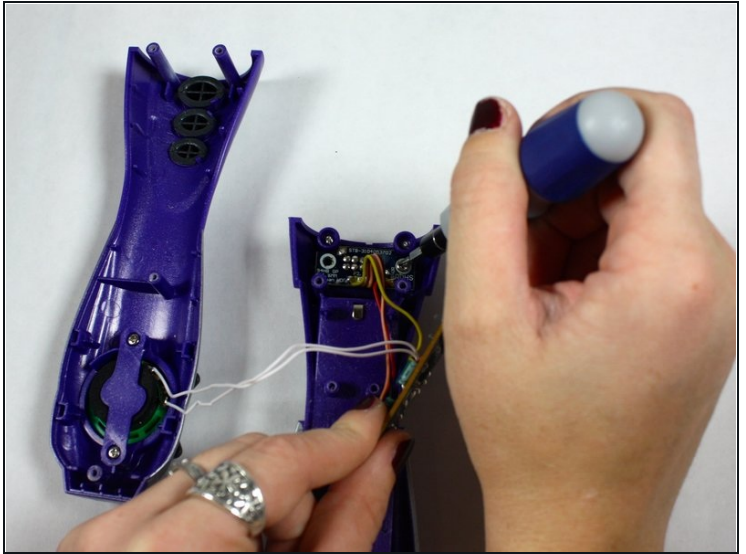
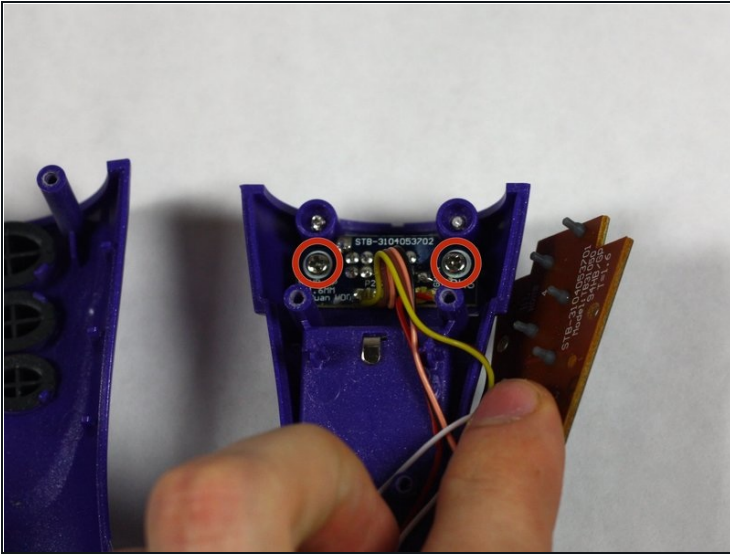
- Keeping all wires connected to their attachments, place the front half of the device face down.

## Step 5 — Removing PCB



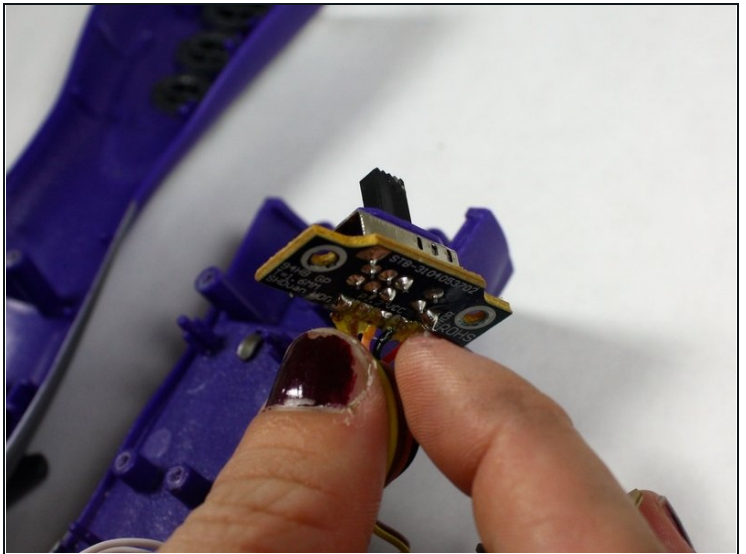
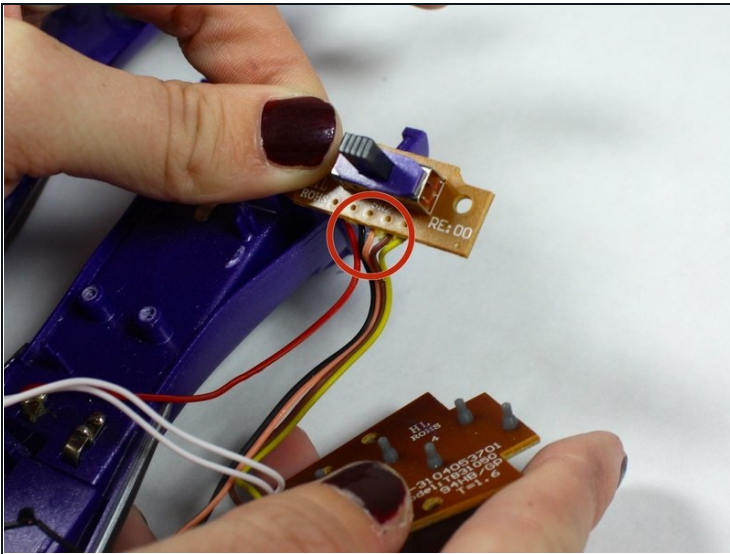
- Remove the 2, #8 11.7 mm Phillips Head screws as well as the 2, #8 7.5 mm screws on the printed circuit board.

## Step 6 — Removing on/off switch



- Remove the 2, #8 11.7 mm Phillips Head screws on the On/Off Switch Board

## Step 7 — Replacing on/off switch



- Remove On/Off Switch Board from its holding and detach the wires.
- Replace the On/Off Switch Board with a new one and reattach the wires using [this](#) soldering guide

To reassemble your device, follow these instructions in reverse order.

