



Xbox 360 Wireless Controller Buttons Replacement

Button installation.

Written By: Brett Hartt



INTRODUCTION

Repair or replace faulty buttons on your Xbox 360 wireless controller.



TOOLS:

- [Spudger](#) (1)
- [T8 Torx Security Bit Screwdriver](#) (1)
- [Tweezers](#) (1)



PARTS:

- [Xbox 360 Wireless Controller Action Button Gasket](#) (1)
- [Xbox 360 Wireless Controller Action Button Covers](#) (1)

Step 1 — Battery



- Depress the battery release button on the top of the controller.
 - Remove the battery holder from the controller.
- i** The standard option for Xbox 360 Wireless Controllers Battery Packs is AA batteries. A rechargeable battery is also available, but both battery options are removed from the controller in the same way.

Step 2 — Rear Case



- Use a pair of tweezers to peel the barcode sticker from the battery compartment.

Step 3



- Remove the seven 9.3 mm T8 Security Torx screws securing the rear case to the front case.

Step 4



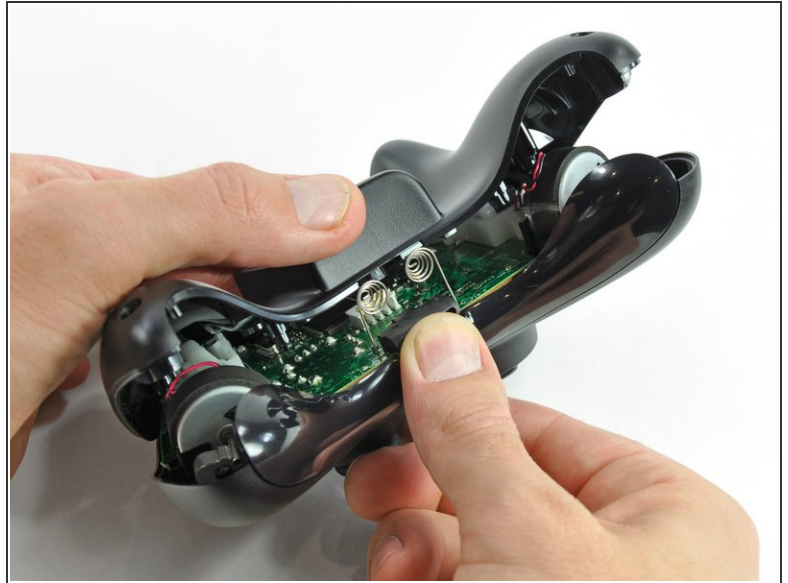
- Insert a [Spudger](#) between the front and rear cases along the left edge of the controller.
- Rotate the spudger toward the front of the controller, prying the two cases apart.

Step 5



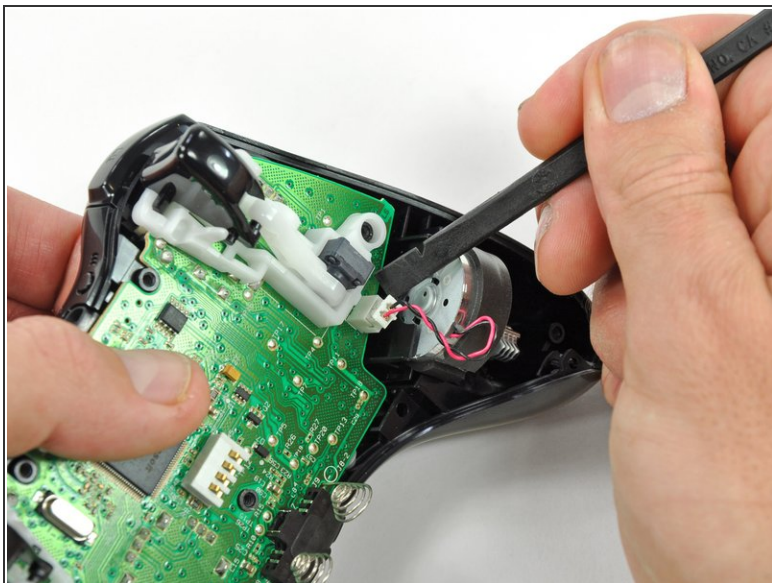
- Insert a spudger between the front and rear cases, near the headphone jack.
- Rotate the spudger toward the front of the controller to pry the two cases apart.

Step 6



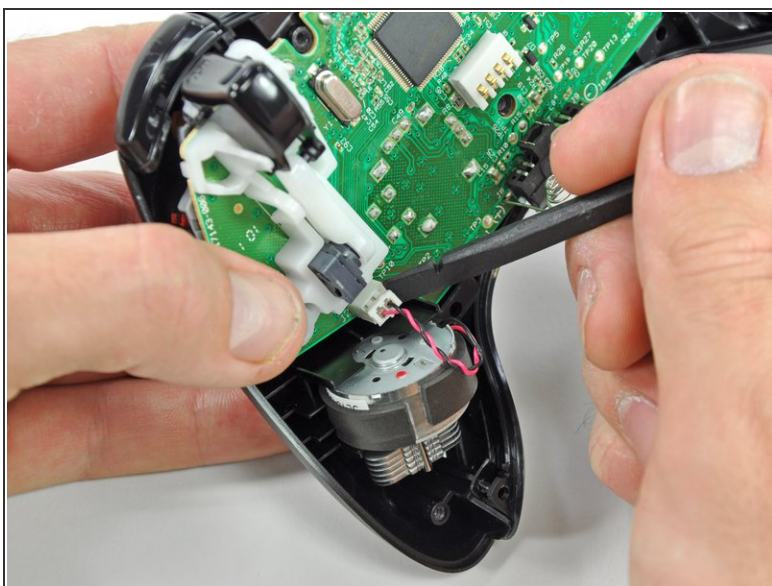
- Grasp the controller by the battery compartment and the headphone jack.
- Lift the battery compartment away from the headphone jack, separating the rear case from the front case and logic board.
- ☛ The battery contact springs are held in place by slots in the battery housing in the rear case. Be sure to realign them properly during reassembly.

Step 7 — Vibration Motors



- Use the flat end of a spudger to remove the vibration motor cable, moving it upward from its socket on the logic board.
- Lift the vibration motor out of the front case.

Step 8



- Remove the vibration motor from the other side of the controller using the same method previously described.
- ⓘ The **left motor** has significantly more counterweight than the right motor.

Step 9 — Logic Board



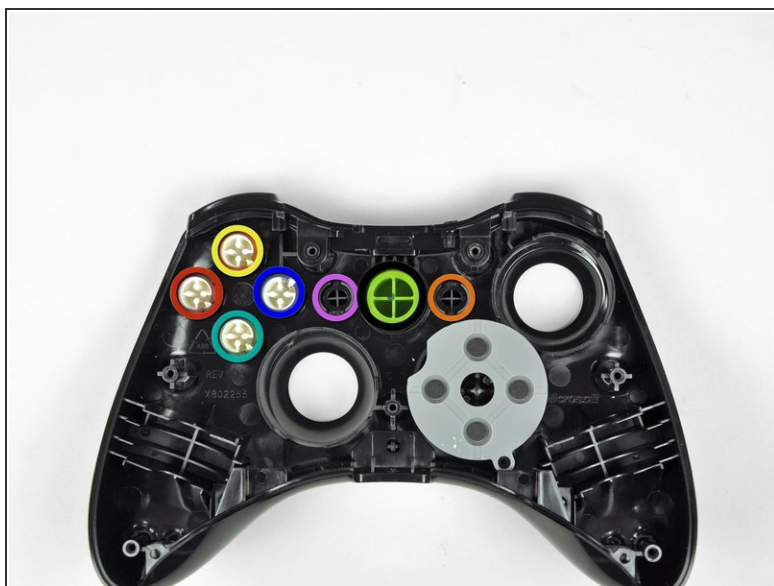
- Lifting from the headphone jack and power plug, remove the logic board from the front case.

Step 10 — Buttons



- Remove the rubber pad from the back of the input buttons.

Step 11



- Using a pair of tweezers, remove the buttons from the front case.

- A Button
- B Button
- X Button
- Y Button
- Start Button
- Select Button
- Guide Button

Step 12



- Using a pair of tweezers, lift the home button's LED ring out of the front case of the controller.
- ⓘ All of the buttons have tabs that correspond to slots in the front case. This prevents buttons from being placed in the incorrect position or orientation.

To reassemble your device, follow these instructions in reverse order.