



Equity Alarm Clock 13014 Clock Hands Replacement

In this guide, we will instruct the user on how to replace the clock hands on the Equity Alarm Clock.

Written By: Michael Johnson



INTRODUCTION

In this 13-step guide, I will show you how to replace the minute, hour and second hands on a clock.

First, you must remove the back of the clock.

Second you must remove parts of the clock's inner apparatus.

Last, you must remove the clock's entire inner apparatus from its golden cover in order to remove the hands.



TOOLS:

- [Tweezers](#) (1)
 - [Phillips #00 Screwdriver](#) (1)
-

Step 1 — Screws and Back Plate



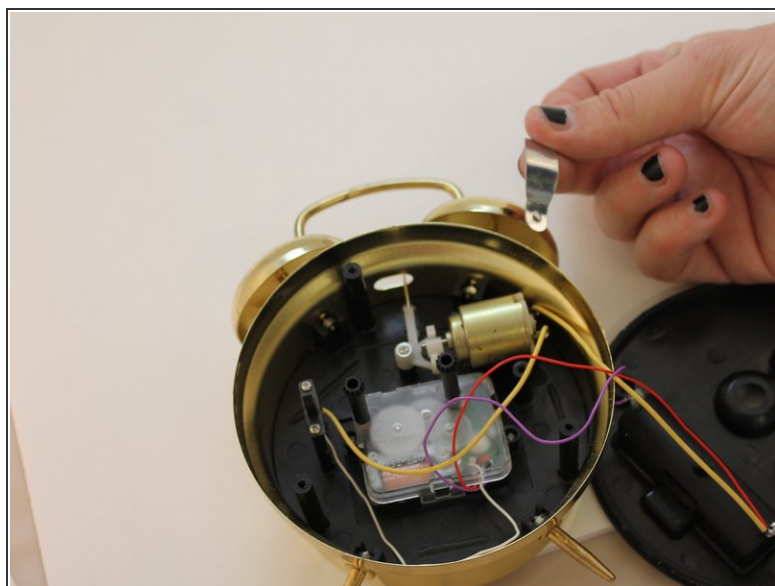
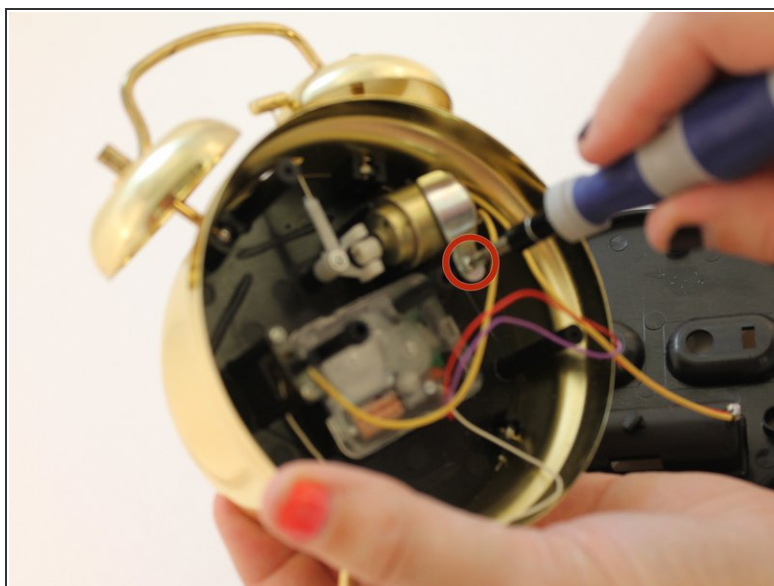
- Using a Phillips screwdriver, remove the top screw.
- *Repeat for other two screws located on the lower right and left sides of the clock.*

Step 2 — Back Plate and Clock's Inner Apparatus



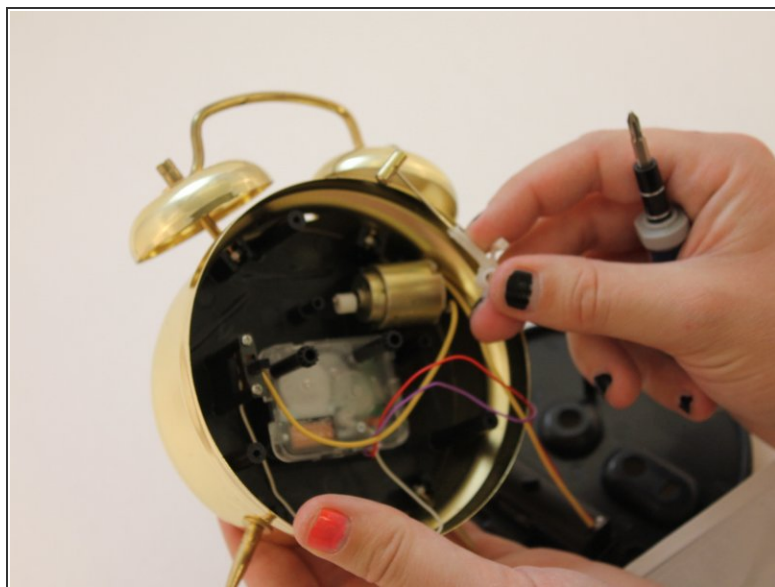
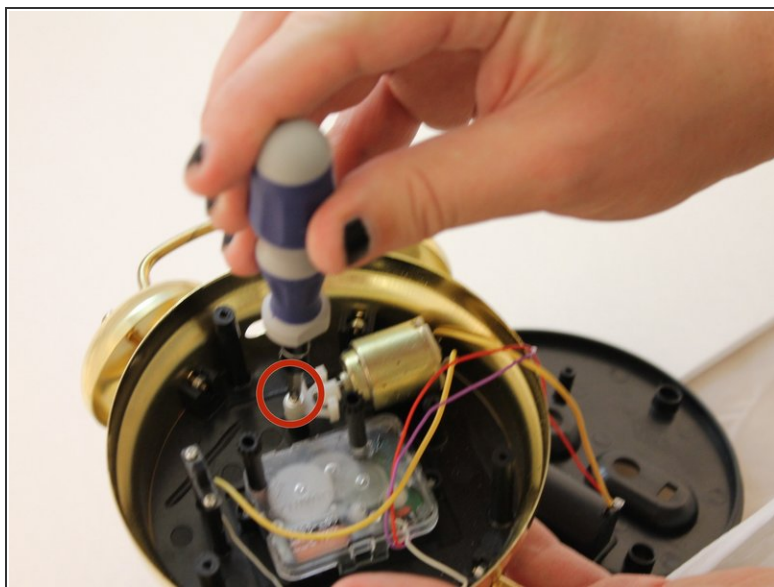
- Place fingers on ridge around back plate and pull upward.

Step 3 — Silver Base and Cellinoid



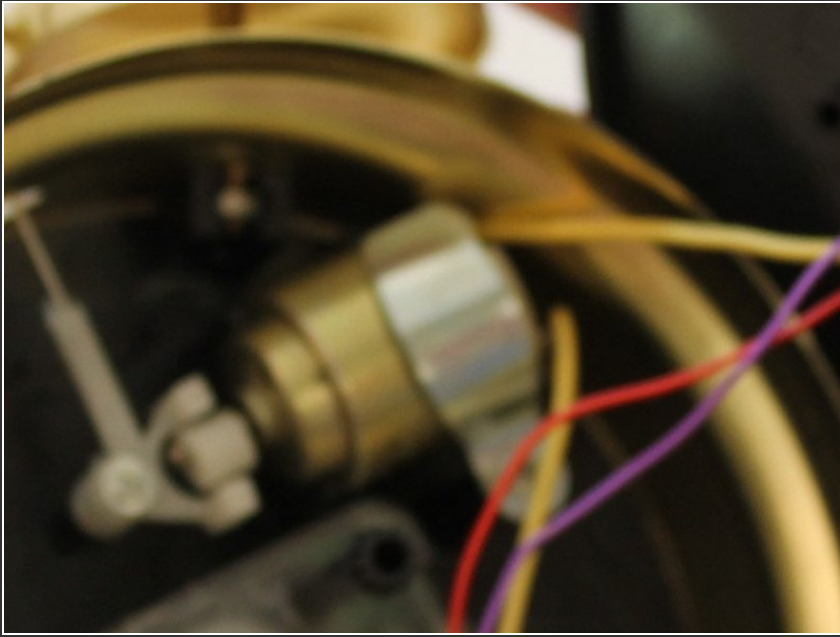
- Using a Phillips screwdriver, remove the silver base located on top of cellinoid in upper right hand of inner clock.

Step 4 — The Bell



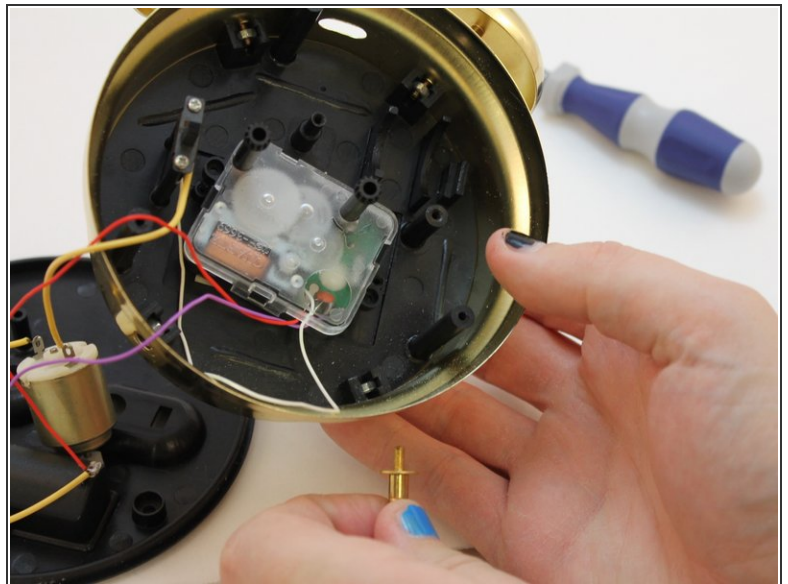
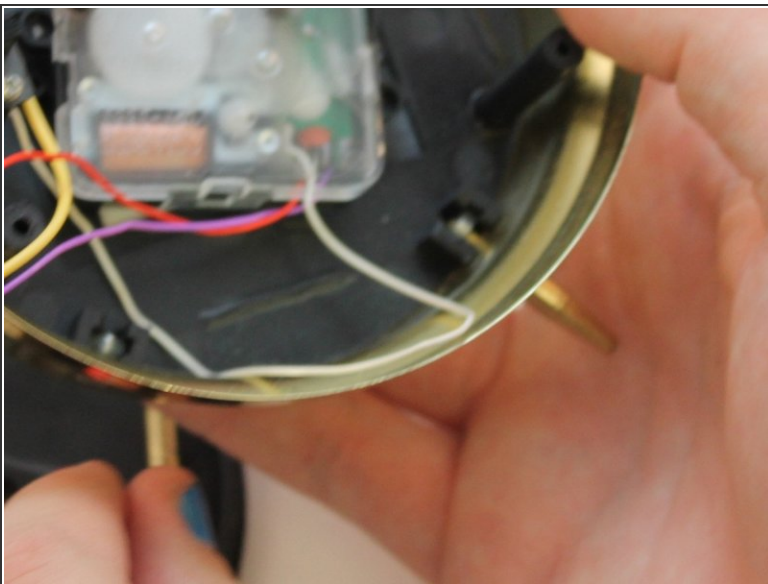
- Using a Phillips Screwdriver, remove bell from inner clock.

Step 5 — Cellinoid From Clock



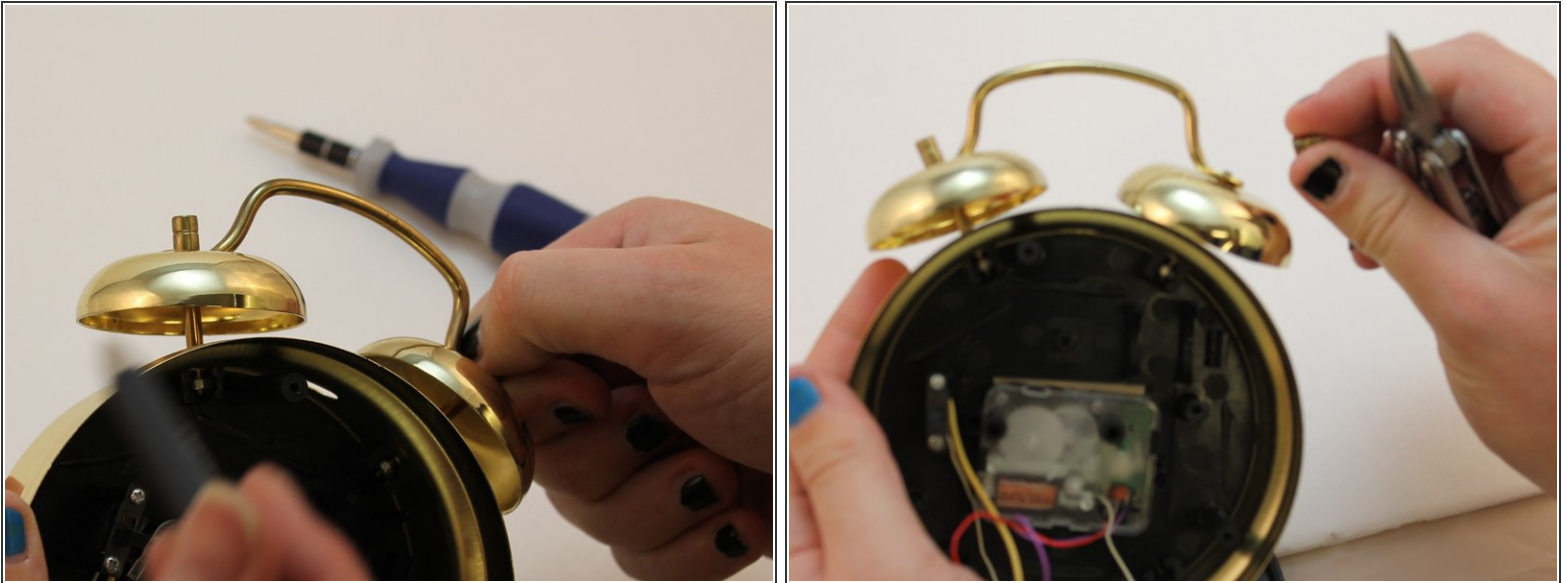
- Cellinoid is located below Silver Base. Remove Cellinoid with your fingers and pull it up from the inner clock apparatus.

Step 6 — Bottom Legs



- Remove the bottom legs of the clock by unscrewing them with your fingers.
- Caution: you may need to use a pair of pliers if bottom legs are attached too tight.

Step 7 — Right Bell Screw



- Using your hands, unscrew top screw located on top of the right bell.
- Caution: You may need to use a pair of pliers to loosen the screw.

Step 8 — Left Bell Screw



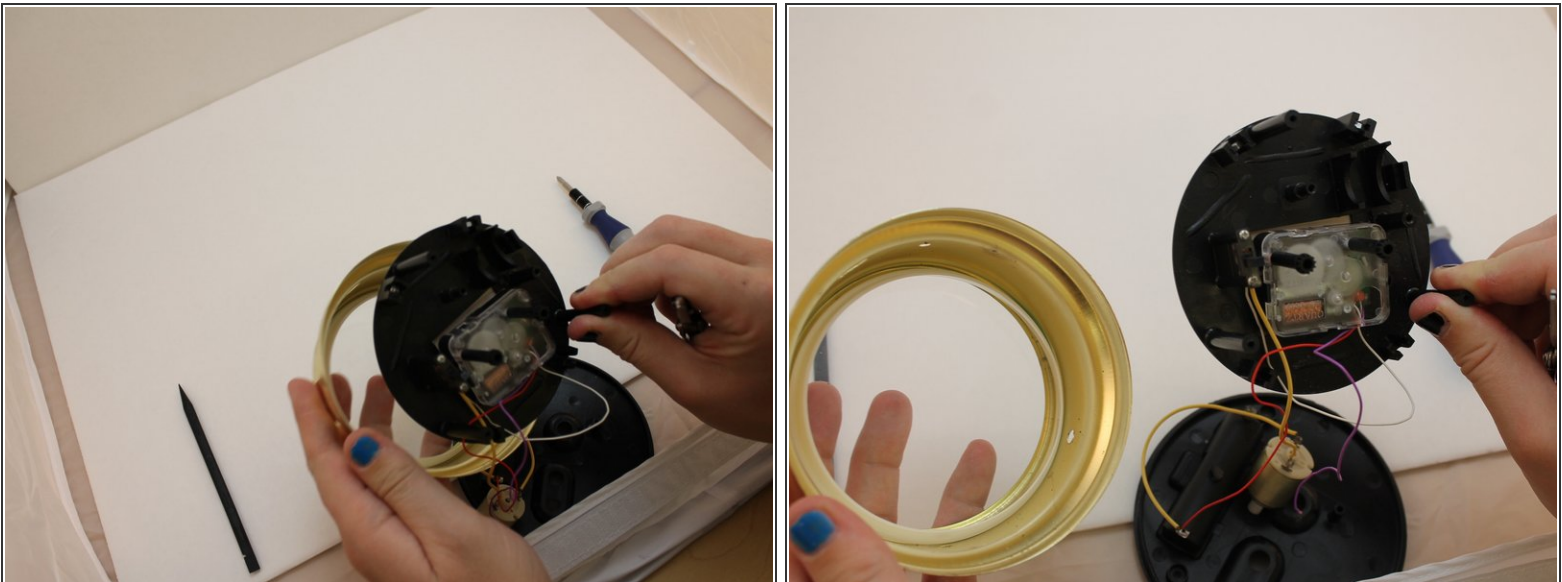
- Repeat Directions in Step 6 but on the left bell screw.
- Caution: You may need to use a pair of pliers.

Step 9 — Bells and Connecting Bar



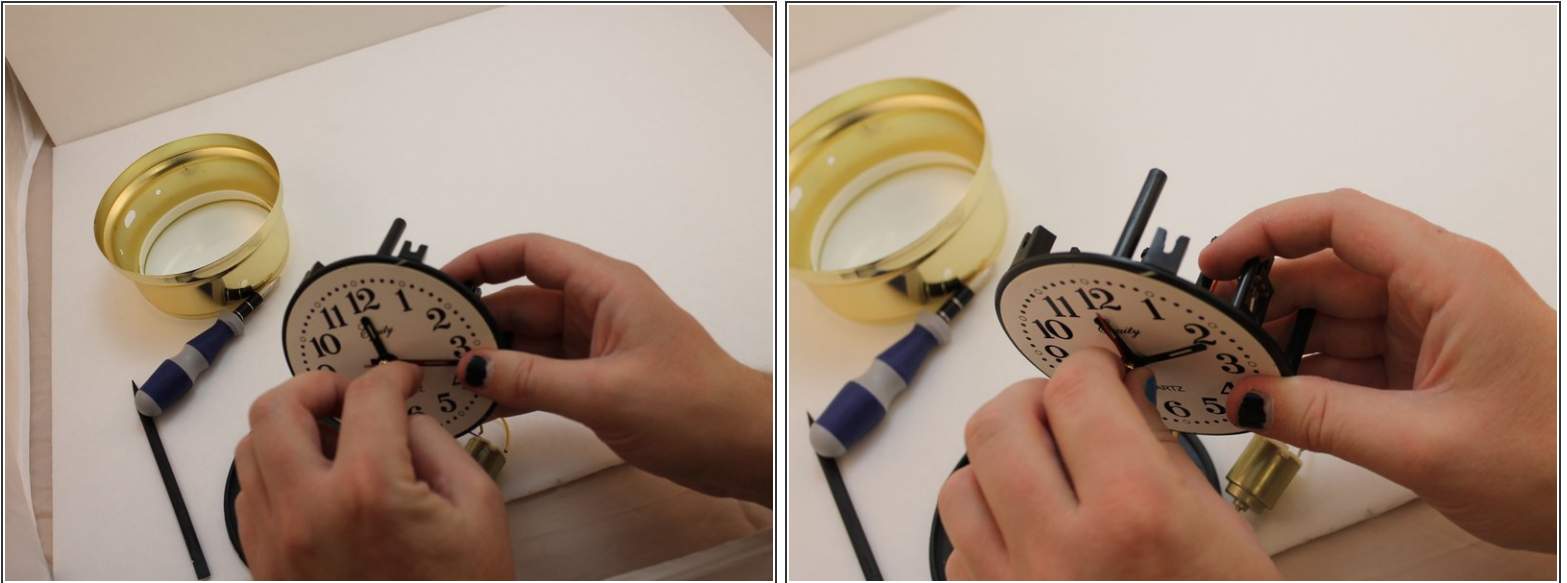
- After you remove the screws for both bells, both of the two bells and the bar connecting the two bells will easily come off. Remove these three components with your fingers.

Step 10 — Remainder of Inner Clock Apparatus



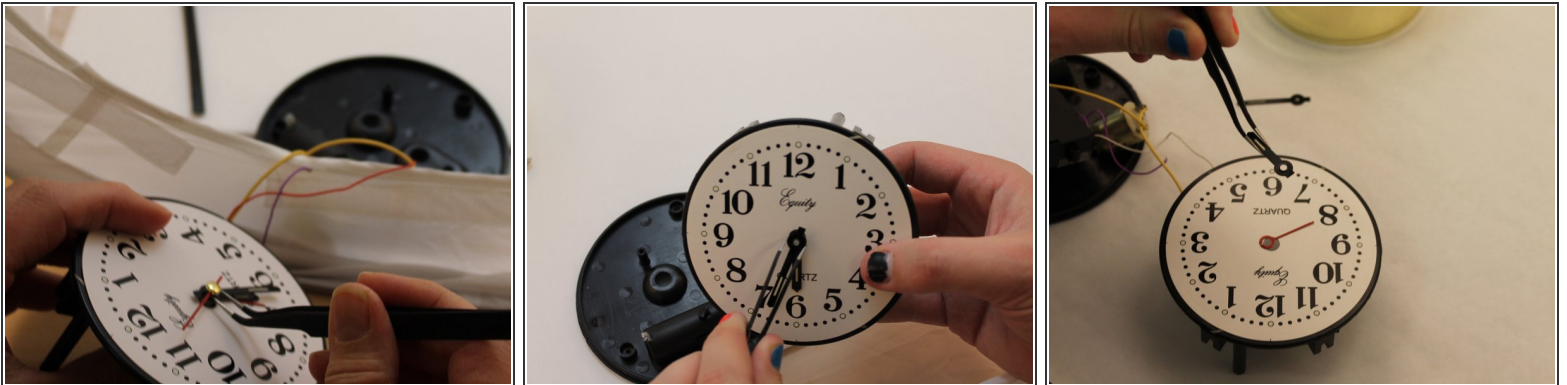
- Using your hand, remove the entire black, inner apparatus of clock. The golden ridge of the clock is attached to the glass screen.

Step 11 — Inner Clock Apparatus Around and Clock Numbers



- In the front of the clock apparatus are the twelve numbers, minute hand, second hand, and hour hand.

Step 12 — Clock Hands



- Using a pair of tweezers, remove the golden peg in the center of the clock. This attaches the minute, hour and second hands.
- After you have removed the golden peg, use the pair of tweezers to remove hour, minute and second hands.

To reassemble your device, follow these instructions in reverse order.

This document was generated on 2020-11-21 07:43:10 PM (MST).

