



# HTC Flyer Battery Replacement

Use this guide to replace the battery in your HTC Flyer.

Written By: Ana



## INTRODUCTION

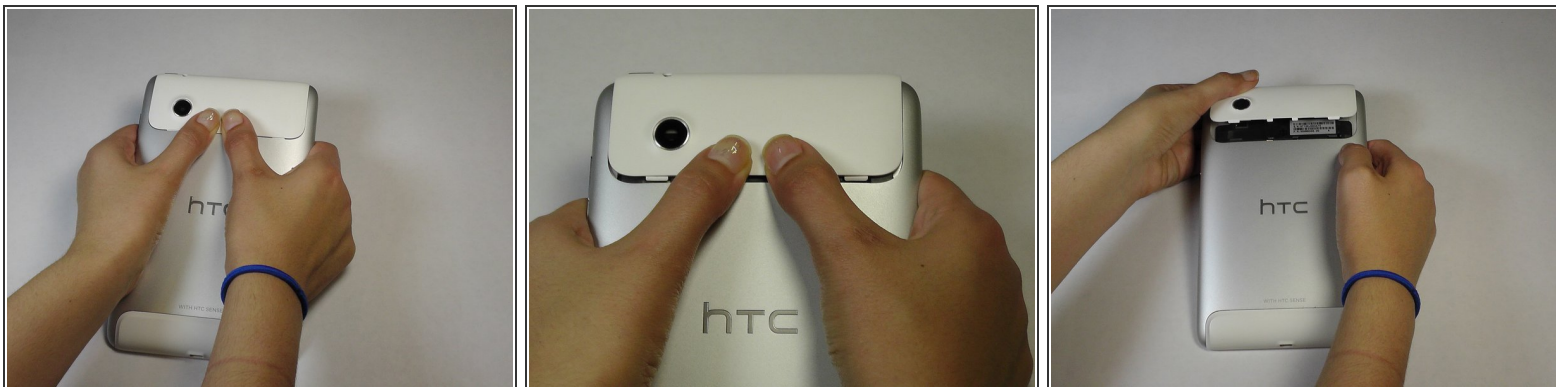
Replacing the battery is a very simple task which only requires a screwdriver, a spudger, and replacement battery.

---

### TOOLS:

- [iFixit Opening Tools](#) (1)
  - [T5 Torx Screwdriver](#) (1)
-

## Step 1 — Back Cover



- Apply pressure along the bottom of the white panel containing the camera and push upwards.

**i** It may take some effort, but it will smoothly slide off.

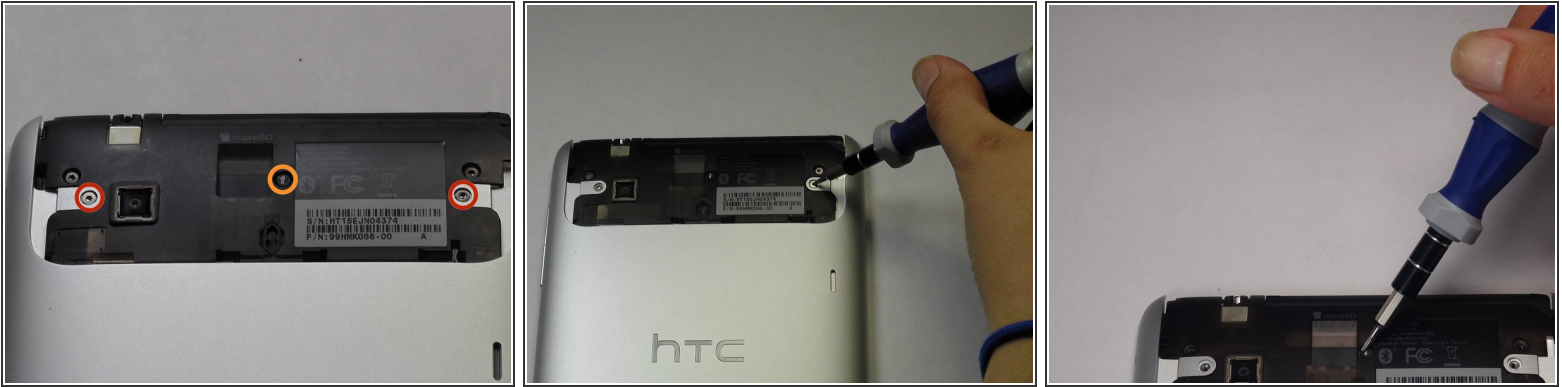
## Step 2



- Unscrew the four of 3.5mm Torx T5 screws that run along the sides of the exposed innards.

**i** All screws in the device will use the Torx T5 screwdriver, so keep it handy.

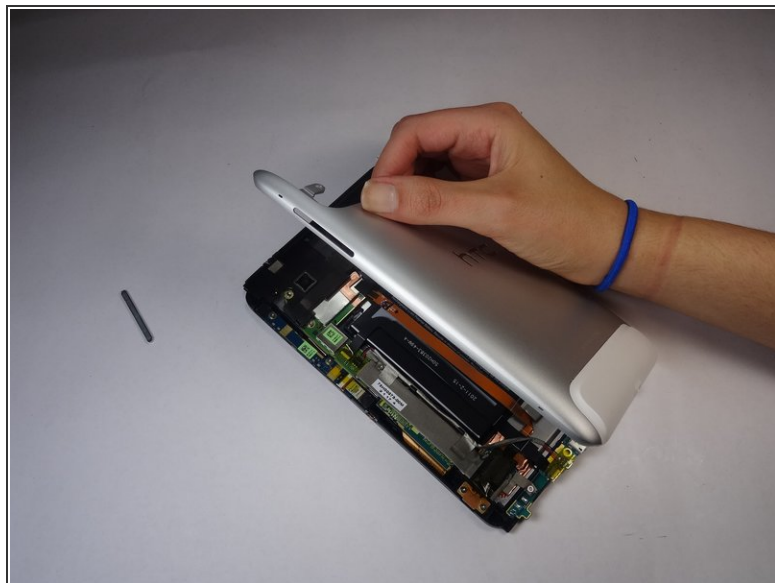
## Step 3



- Remove the black protective piece of plastic by sliding it upwards.
- Remove the two 3.5mm Torx #5 screws holding the protective plastic down on along the sides.
- ⚠ A center 3.5mm Torx screw will be covered by "VOID" sticker.
- Either remove the sticker or jam the screwdriver into the screw, and remove the screw.
- Remove the protective panel by sliding it upwards.

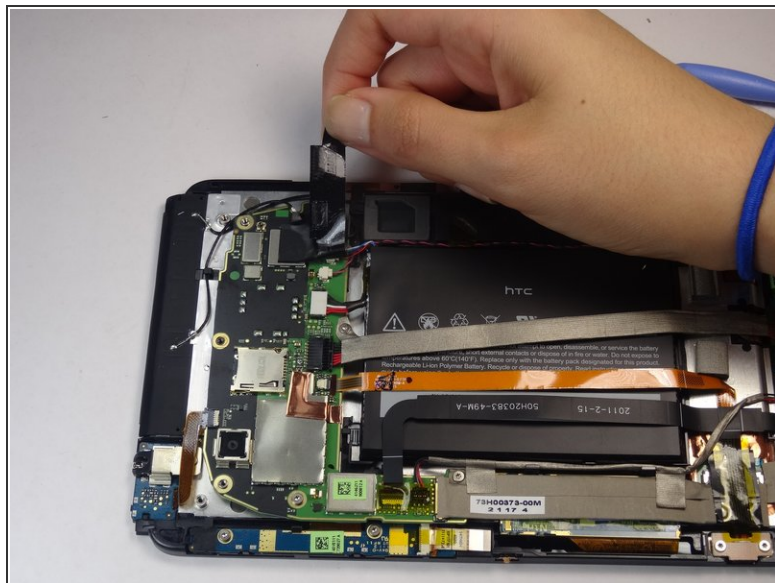
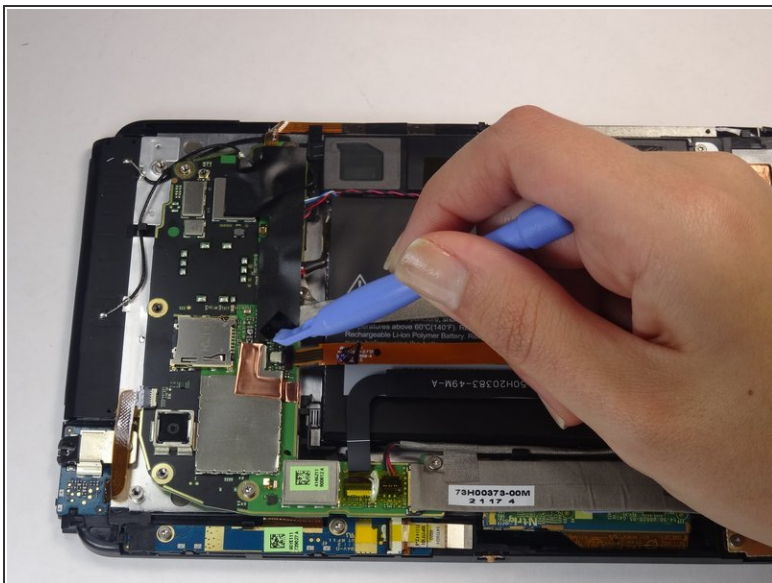


## Step 4



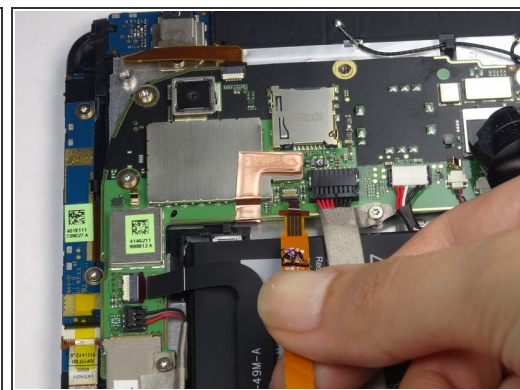
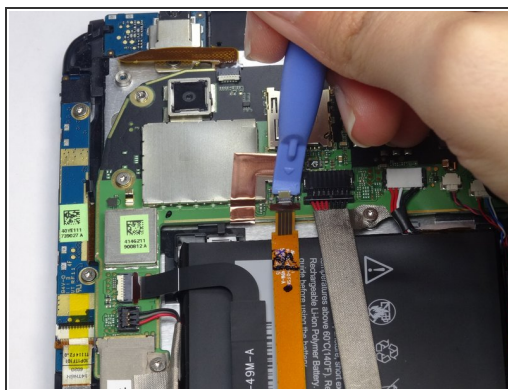
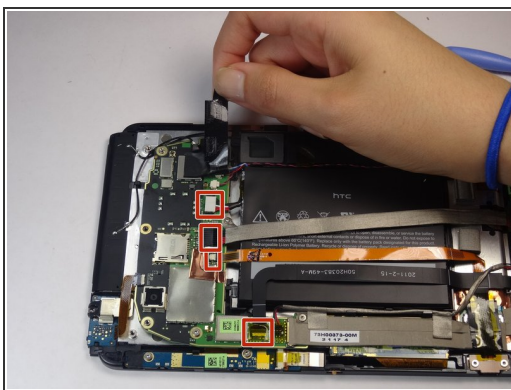
- Before removing the back cover, apply some scotch tape to the volume buttons to prevent them from falling out of the back panel.
- Use a plastic opening tool to lever up the top half of the cover.
- Lift the back panel up and remove it from the device.

## Step 5 — Battery



- Gently unfold the black tape along the top that covers the cable attachment points.
- ❗ Leave the tape partially attached so that it can be easily re-attached.

## Step 6



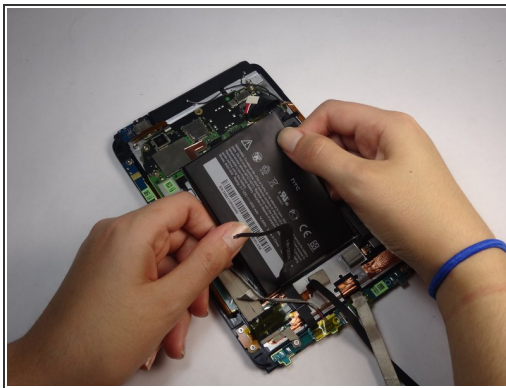
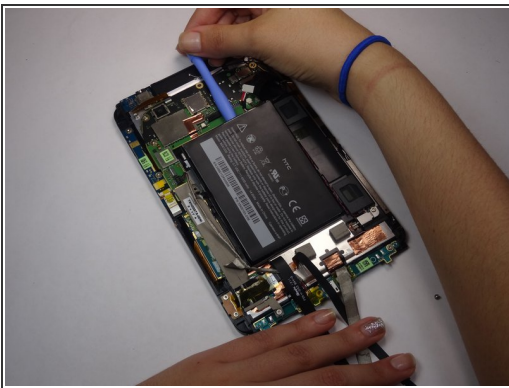
- Use the tip of a spudger as a lever to disconnect the four cable connectors.
- Gently pull out these cables after releasing the back piece.

## Step 7



- Remove the single 2.5mm Torx T5 screw holding the battery down along the top side.

## Step 8



- Wedge the flat end of a spudger inbetween the battery and the front panel assembly.
  - Run the flat end of a spudger along the top edge of the battery to separate it from the adhesive securing it to the front panel assembly.
- ⓘ If you encounter any resistance from the remaining adhesive, simply use the flat end of a spudger to remove the excess adhesive.

To reassemble your device, follow these instructions in reverse order.

This document was generated on 2020-11-28 04:05:56 AM (MST).

