



Samsung DVD-HD850 Player Power Button Replacement

This guide shall help you in replacing your power button if you followed thoroughly the troubleshooting steps with no positive results.

Written By: Robert Moss





TOOLS:

- [Phillips #0 Screwdriver](#) (1)



PARTS:

- [New power button](#) (1)

Step 1 — Cover



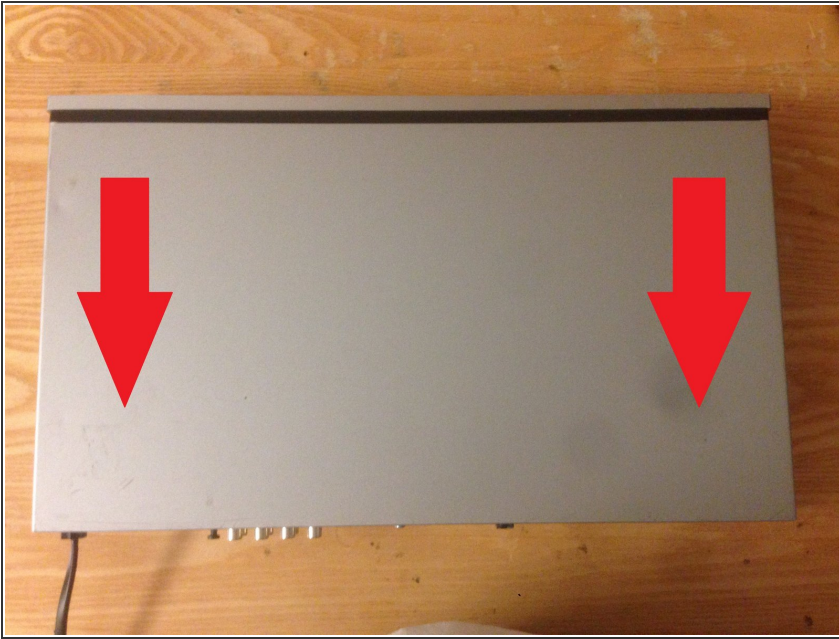
- with the front of the device facing you, turn the device 180 degrees so the back panel of the device is facing you

Step 2 — Locate and remove screws



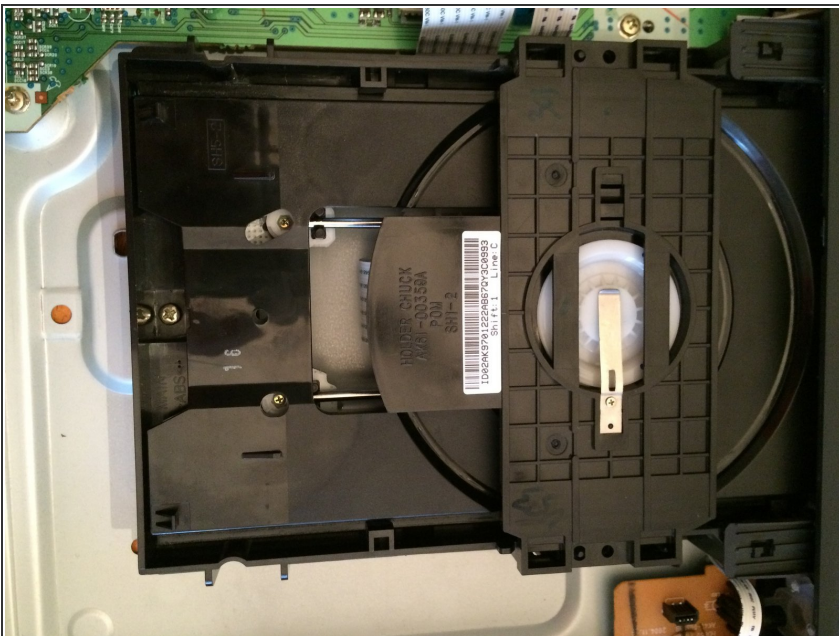
- locate the three (3) screws on the back panel of the device that are implanted in the device
- to remove the screws, use the tool(s) listed above (right underneath the introduction) and twist the screws counter-clockwise to remove them from the device

Step 3 — Remove Cover



- to remove the cover of the device, pull the cover towards the back of the device until it is completely removed so you can see the insides of the device

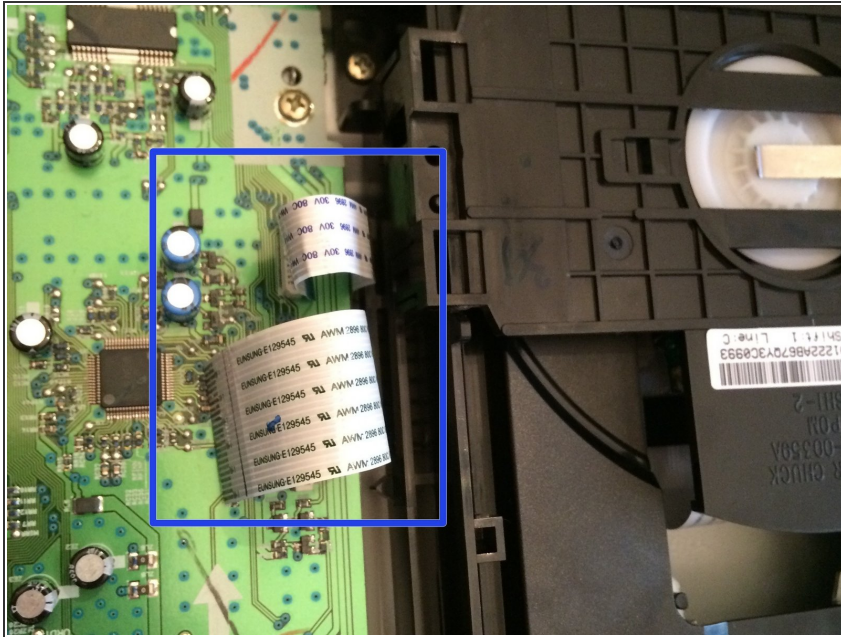
Step 4 — Locate and Remove The Disk Tray



⚠️ *NOTE* remember to never connect to power when working on electrical components

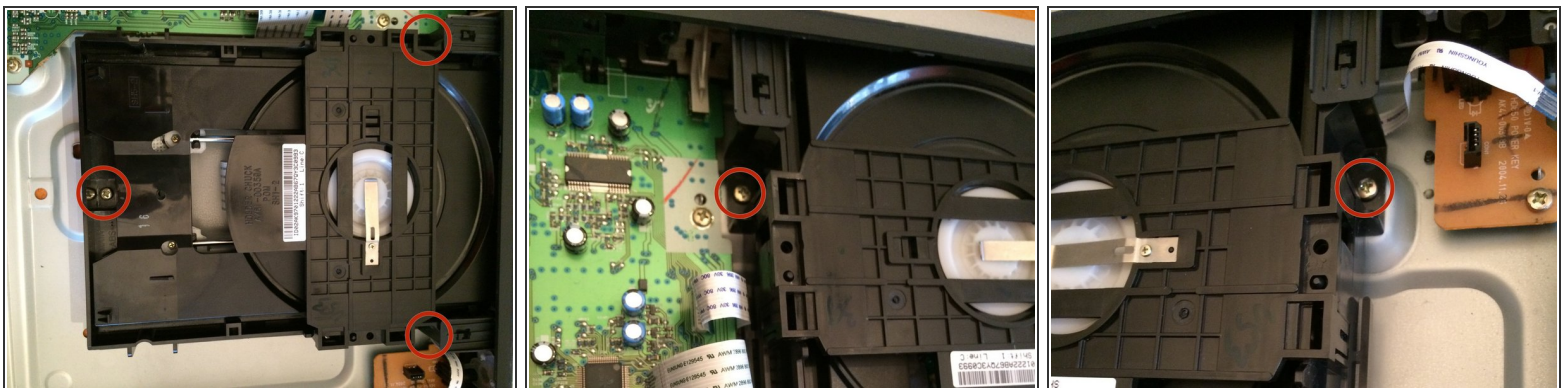
- Find and locate the disk tray it is located top right hand side of the component when the back of the device (dvd player) is facing you.

Step 5 — Removing The Data Strips



- Locate and gently remove the data strips on the tray. There are three in total, two on the left hand side and one on the right.

Step 6 — Removing The Screws



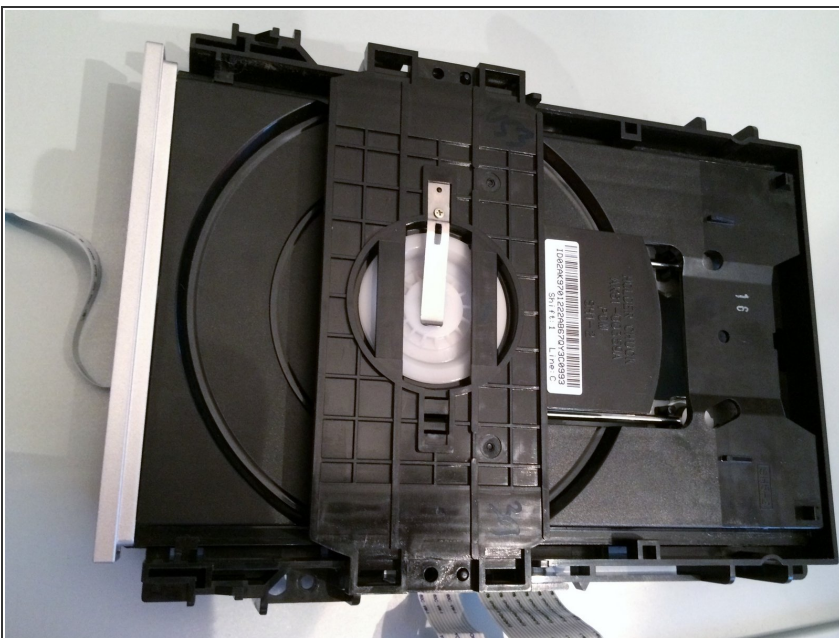
- As noted by the red circles, locate and remove the screws one at a time

Step 7 — Disk Tray Removal



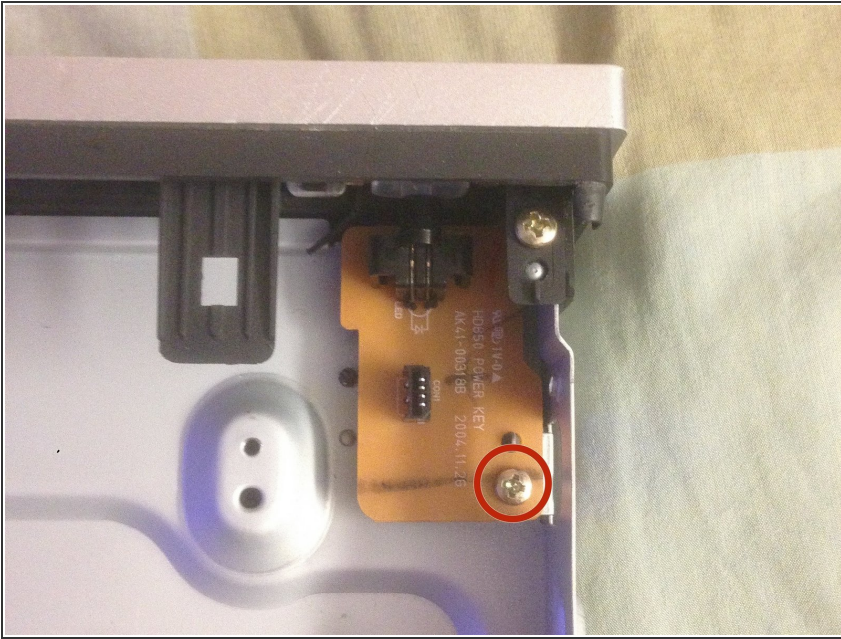
- After removing the clips slowly incline the disk drive towards you and unclip it from the two (2) brackets located on the top
- ☑ Be careful not to push too much pressure on the brackets since they tend to break easily

Step 8 — Success!



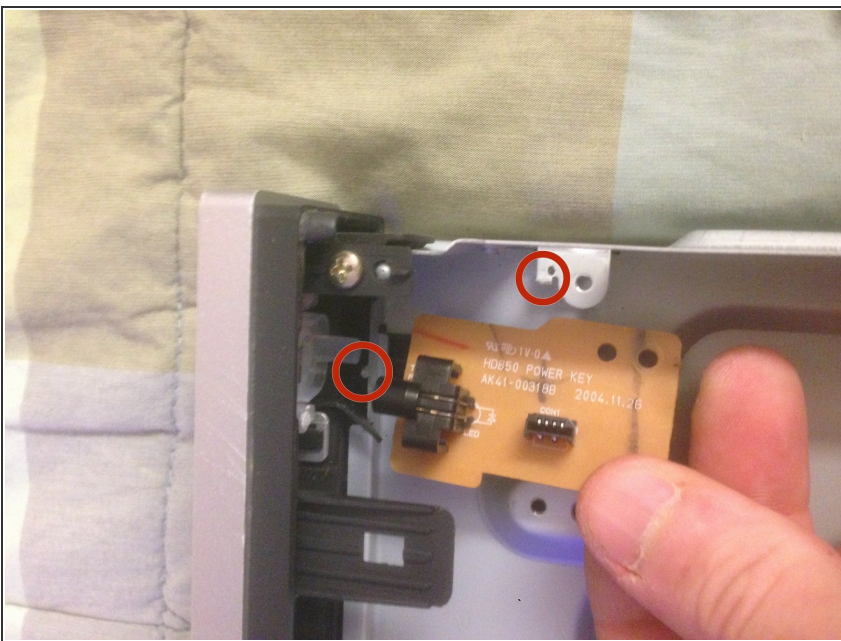
- Congrats! You have successfully have taken out the disk drive

Step 9 — Unscrew power button circuit board



- Unscrew the one screw that is connecting the circuit board to the frame.

Step 10 — Remove power button circuit board



- Jiggle the circuit board until it becomes loose from the two prongs holding it in place.
- Replace with a new one.

To reassemble your device, follow these instructions in reverse order.