



iHome iP21 Display LED Replacement

This guide shows how to replace the display LED...

Written By: Brandy



INTRODUCTION

This guide shows how to replace the display LED of the iP21.

TOOLS:

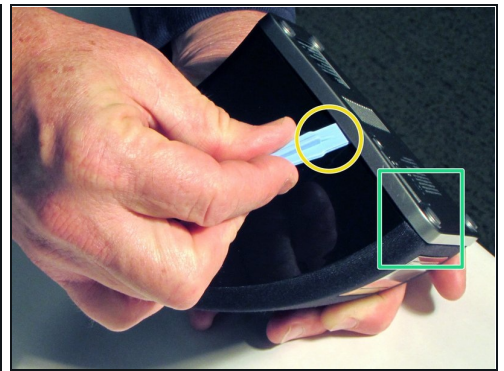
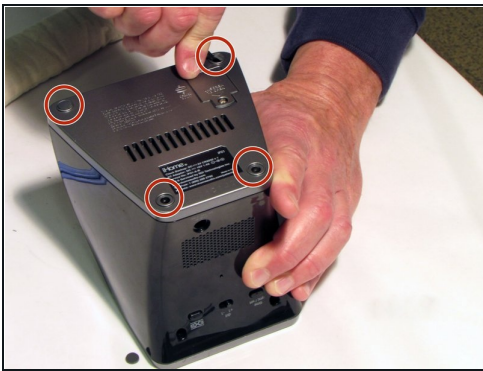
Phillips #1 Screwdriver (1)

Phillips #2 Screwdriver (1)

Spudger (1)

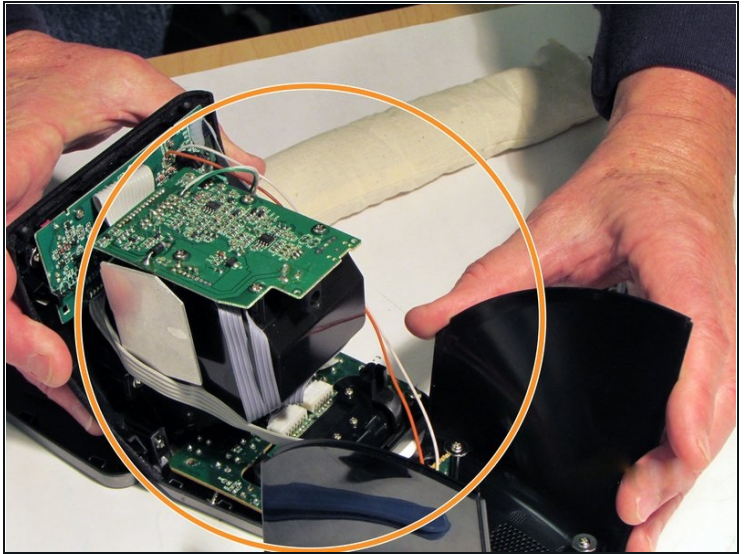
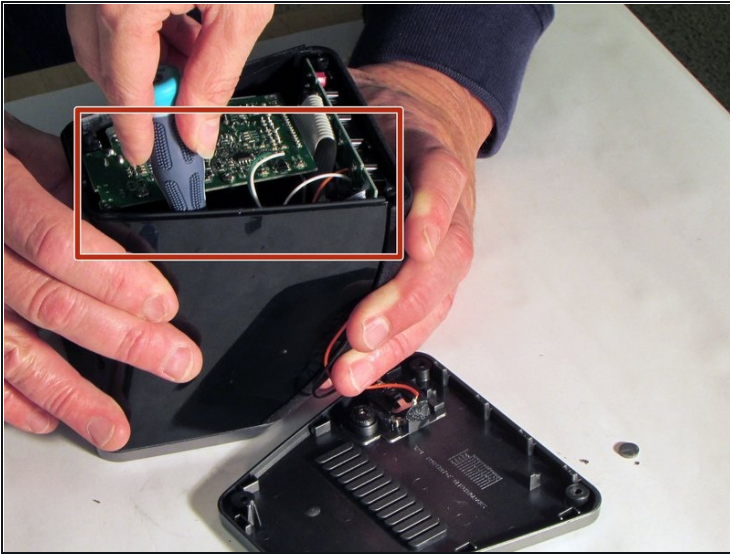
Soldering Iron 60w Hakko 503F (1)

Step 1 — Base



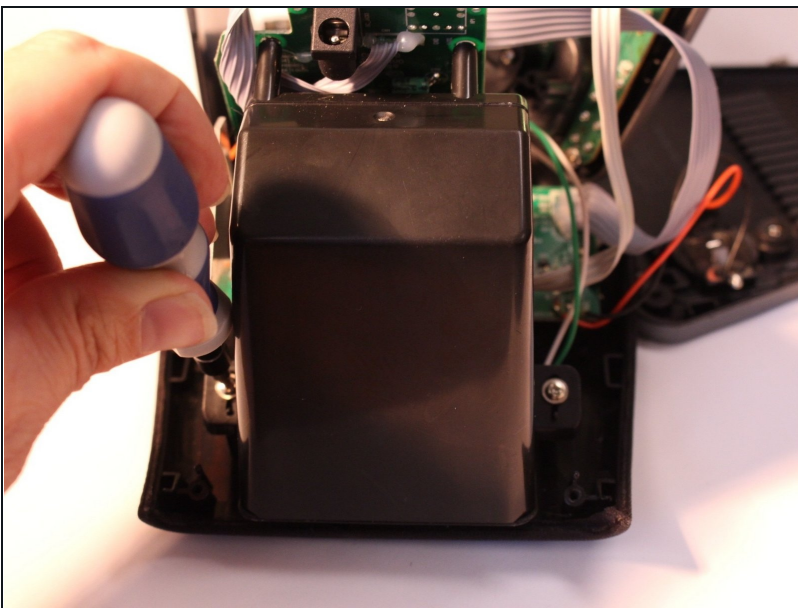
- Pry the four rubber feet from the bottom of the iP21 to expose four 11mm screws.
- Unscrew the four 11mm screws from the base.
- Pry the base loose using the spudger.
- Remove the base by hand.

Step 2 — Housing



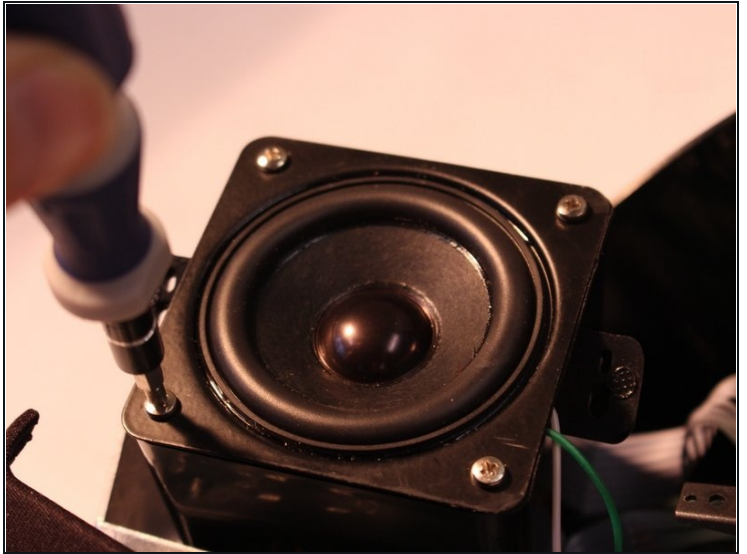
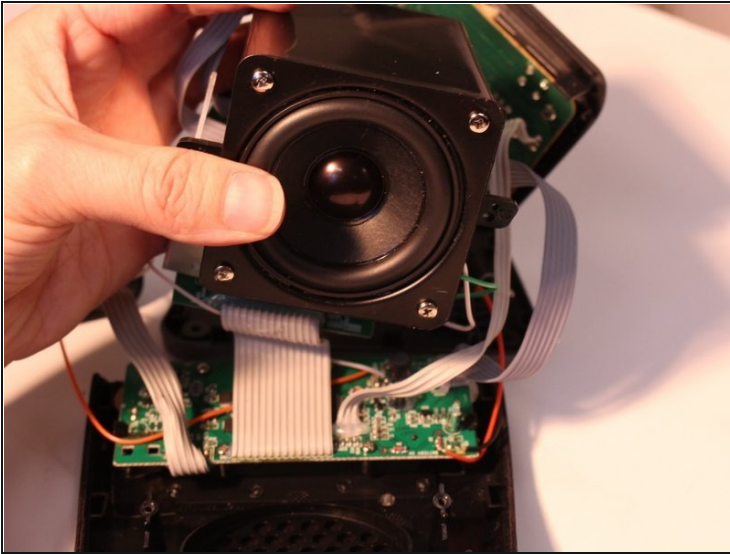
- Remove the two black 6mm screws connecting the main circuit board to the housing top.
- Gently pull front housing from the back housing.

Step 3 — Remove Speaker Assembly



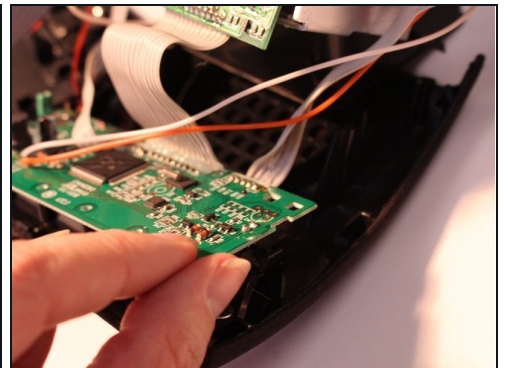
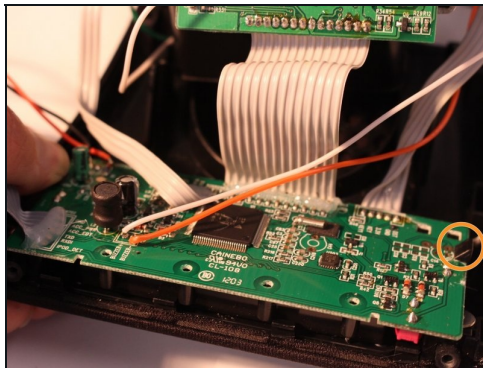
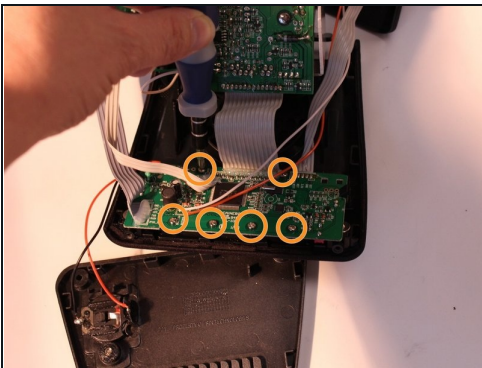
- Remove two 9mm screws holding speaker assembly in iP21, using iFixit Phillips #2 bit

Step 4 — Remove speaker from speaker assembly



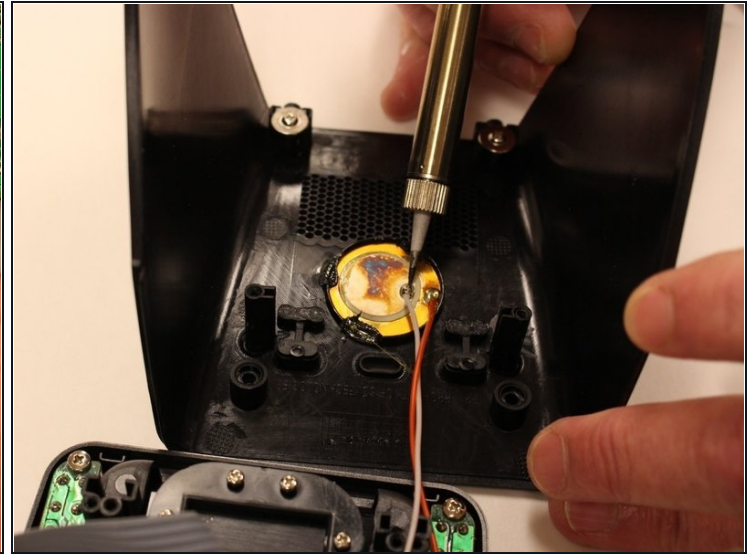
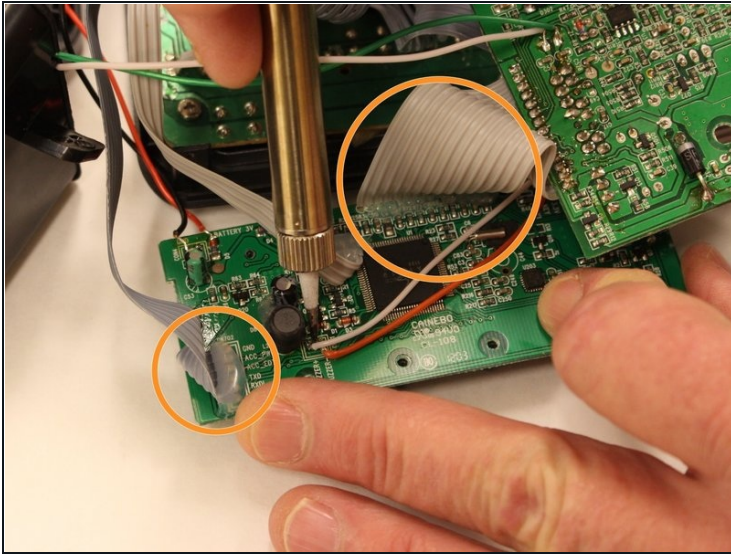
- Lift speaker assembly
- Remove four 7mm screws to detach speaker from speaker assembly

Step 5 — Display circuit board



- Remove six 6mm screws from display circuit board.
- Press black holding clips down and outward to release display circuit board.
- Lift display circuit board to detach it from the housing.

Step 6 — Cables



- Desolder the solder joints connecting the grounding cable to the display circuit board.
- Remove glue from the ribbon cables with your fingers. Grasp and pull the glue to remove it from the circuit board.
- Desolder the solder joints connecting the three ribbon cables to the back of the display circuit board.
- Desolder the solder joints connecting the two grounding cables to the back of the display circuit board.
- Desolder the solder joints connecting the two grounding cables to the back of the main housing.

To reassemble your device, follow these instructions in reverse order.