



Power Mac G4 Cube Hard drive Replacement

Installing Hard drive.

Written By: Ryan Chun



INTRODUCTION

Installing the hard drive involves removing the outer case before actual installation.



TOOLS:

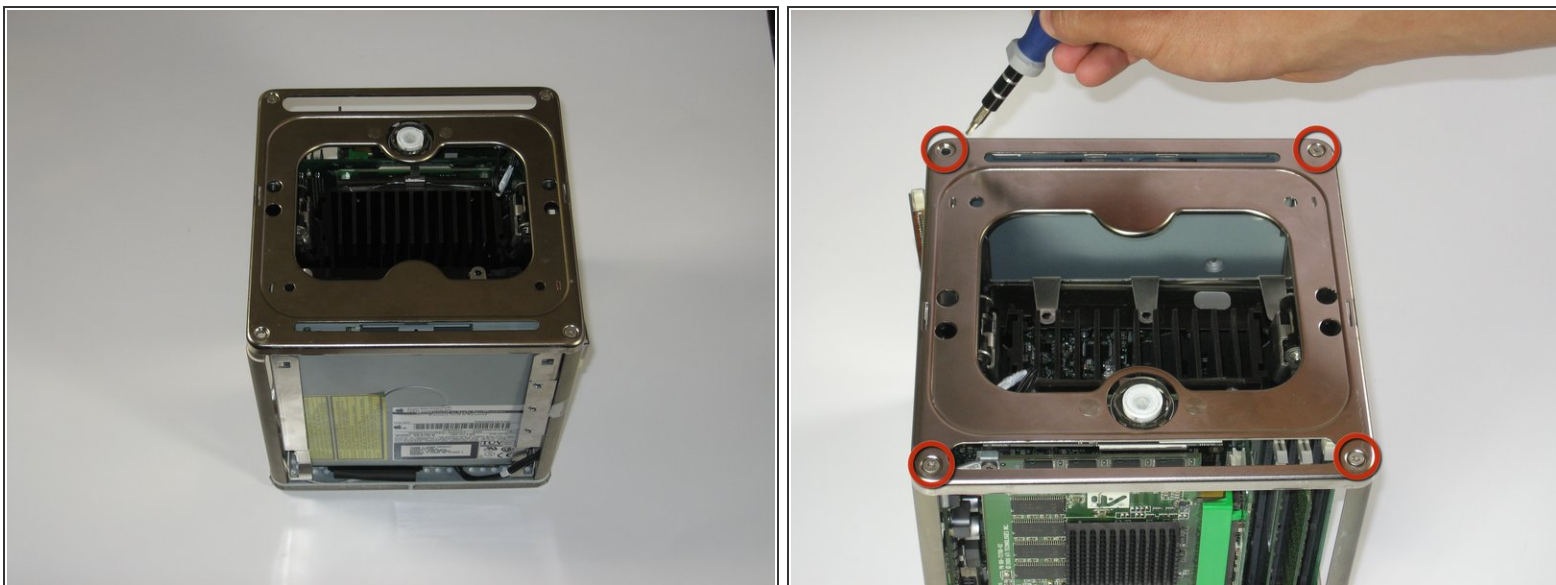
- [T10 Torx Screwdriver](#) (1)
-

Step 1 — Outer Case



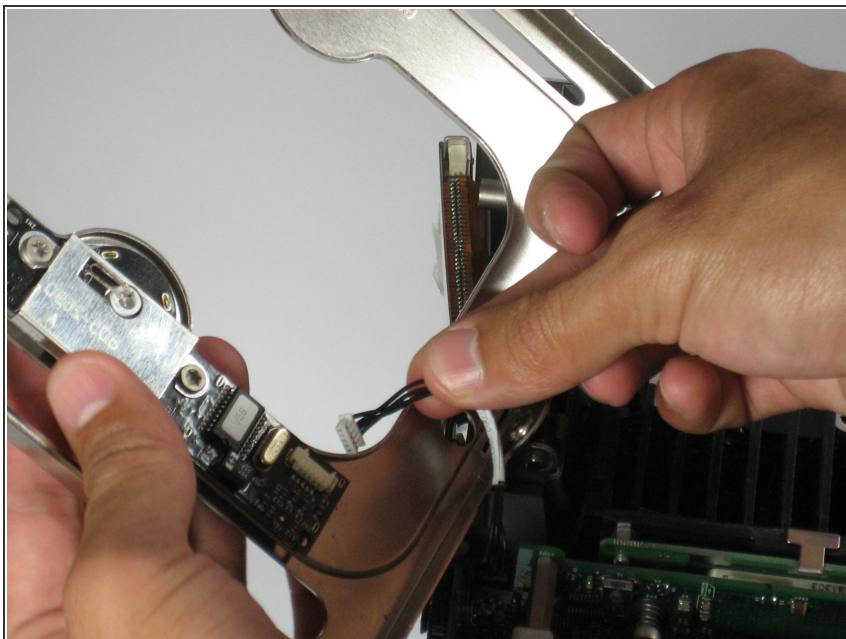
- Release the back handle of the PowerMac. Slowly pull out the cube by holding the end of the handle. Watch for any parts that may become entangled with the outer case.
- Push back the handle after you have taken the core out of the case.

Step 2



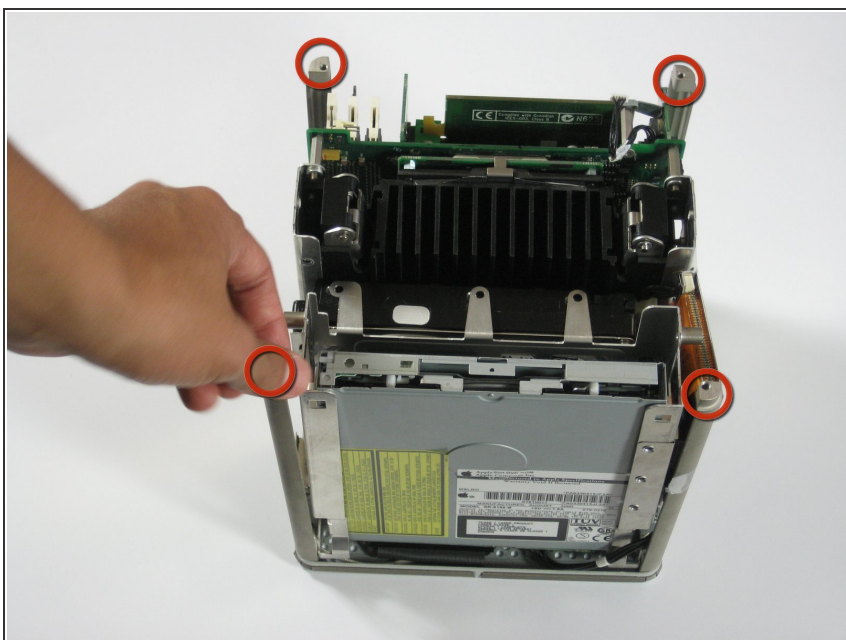
- Place the cube upside down and remove the four T10 Torx screws on the front plate. Then remove the two screws on each side.

Step 3



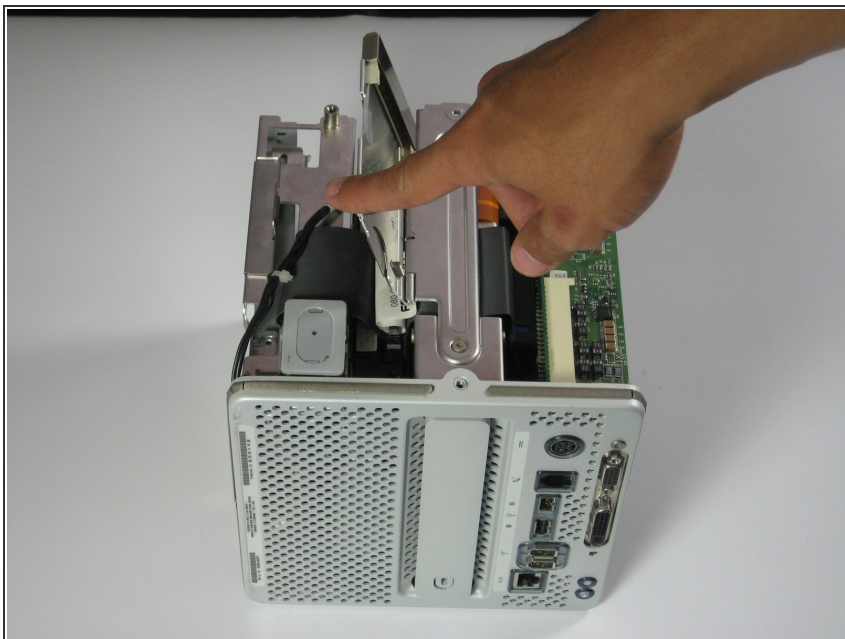
- ⚠ Slowly lift the plate off the cube and disconnect the power cord.

Step 4



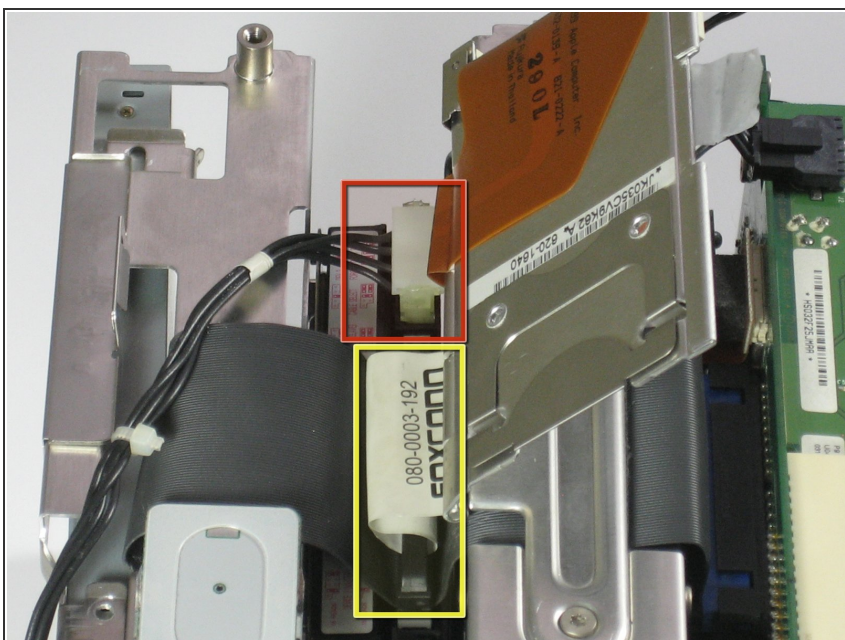
- Remove the four pillars from each corner.
- ⓘ The pillars should come out fairly easily.

Step 5 — Hard drive



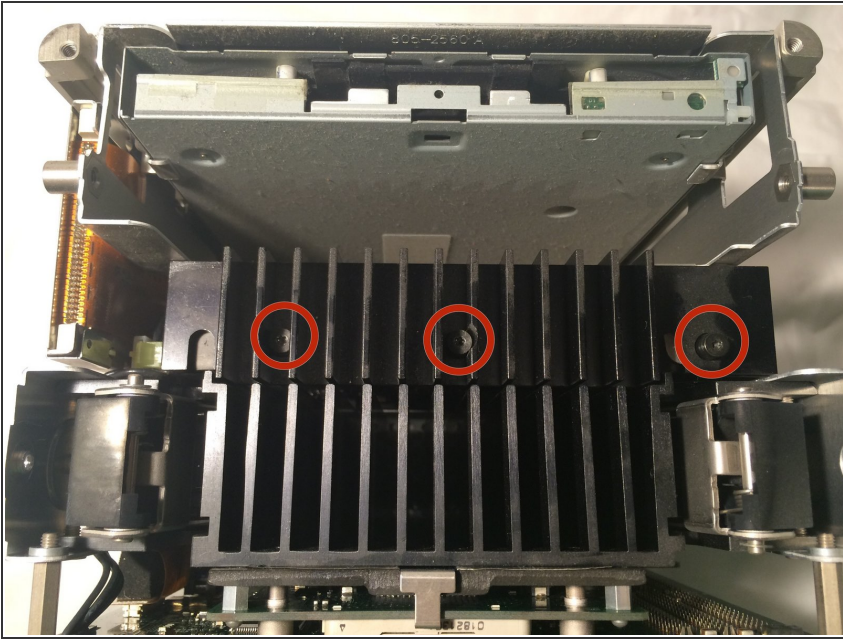
- Lift Airport slot.

Step 6



- Remove the power cord from the hard drive.
- Remove the IDE cable from the hard drive.
- Grip the sides of the hard drive and slowly pull outward.

Step 7



- Remove the three top screws of the hard drive use a T8 bit and remove the heat sink.
- Carefully slide the hard drive to the open side (side without the IDE and power cables) to remove the drive.
- Turn the drive over, remove the sled rail with a T10 driver for its two screws. Transfer the rail to the same side on the new drive.
- Insert new hard drive.

To reassemble your device, follow these instructions in reverse order.