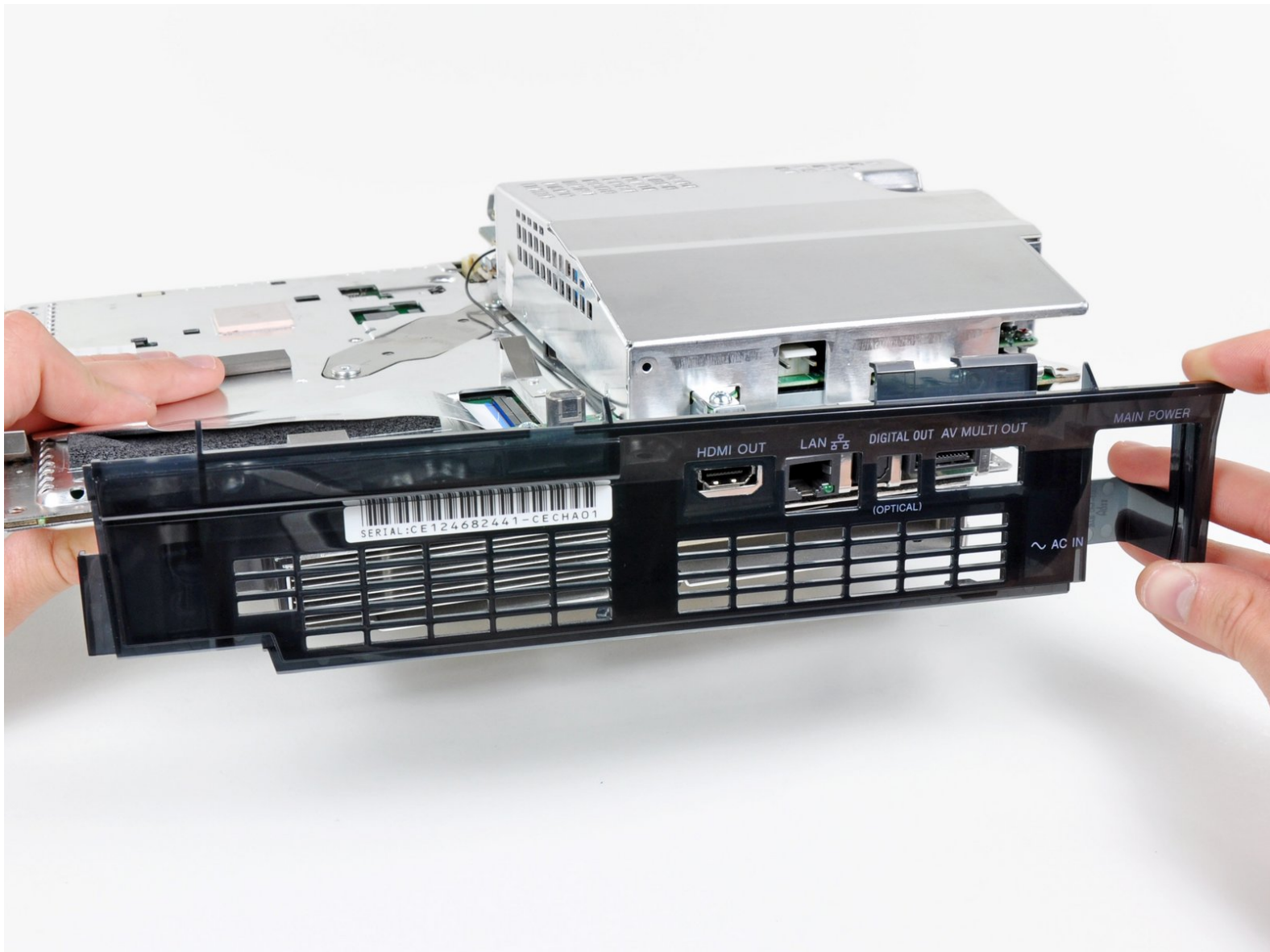




# PlayStation 3 Rear Cover Replacement

Use this guide to replace the plastic rear cover.

Written By: Walter Galan



# INTRODUCTION

Use this guide to replace the plastic rear cover.

---

## TOOLS:

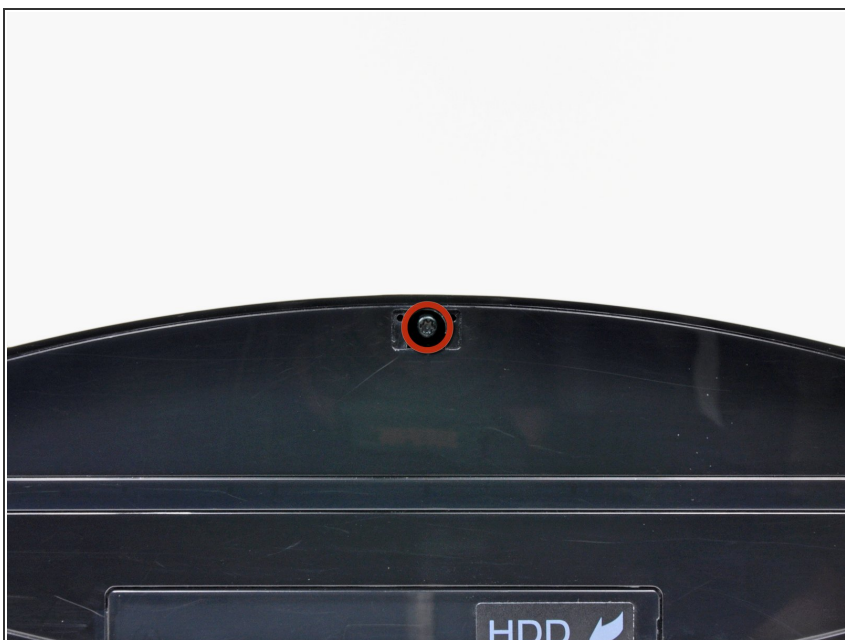
- [Phillips #1 Screwdriver](#) (1)
  - [Spudger](#) (1)
  - [TR10 Torx Security Screwdriver](#) (1)
-

## Step 1 — Smart Plate



- Use the tip of a spudger to remove the black rubber screw cover from the side of the PS3.
- ⓘ The screw cover may be underneath a warranty sticker. This sticker will change appearance, and show "VOID" after it has been removed.

## Step 2



- Remove the single 8.5 mm T10 Security Torx screw from the smart plate.

## Step 3



- Pull the smart plate toward the hard drive bay, then lift it off the body of the PS3.

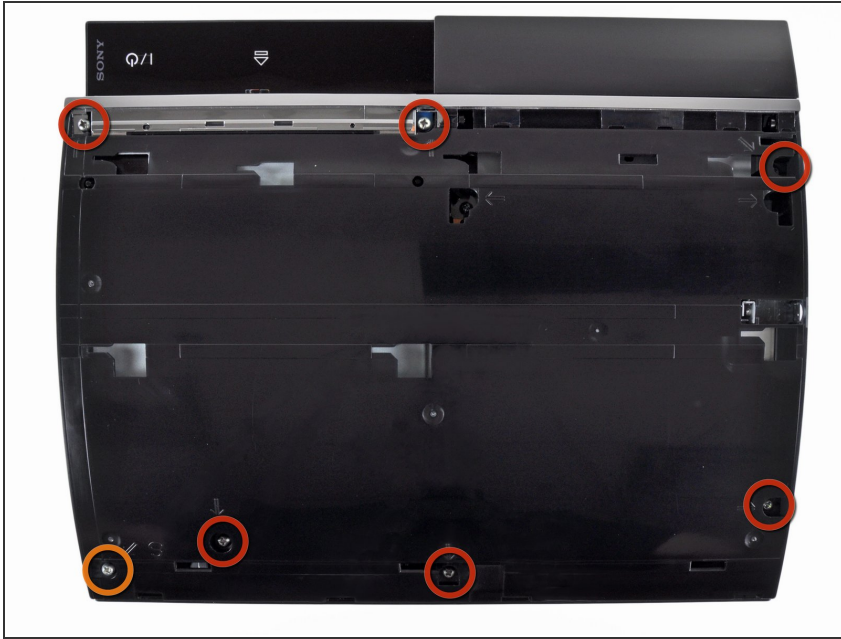
## Step 4



⚠ Be sure to keep track of the small metal bracket loosely held in the top cover, if equipped.



## Step 5 — Top Cover



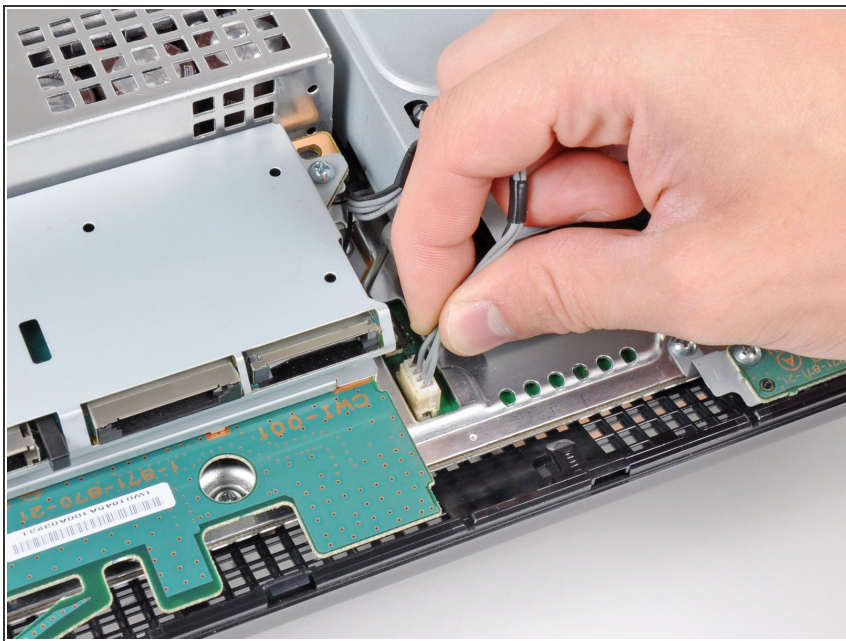
- Remove the following seven screws:
  - Six 52 mm Phillips screws
  - One 30 mm Phillips screw

## Step 6



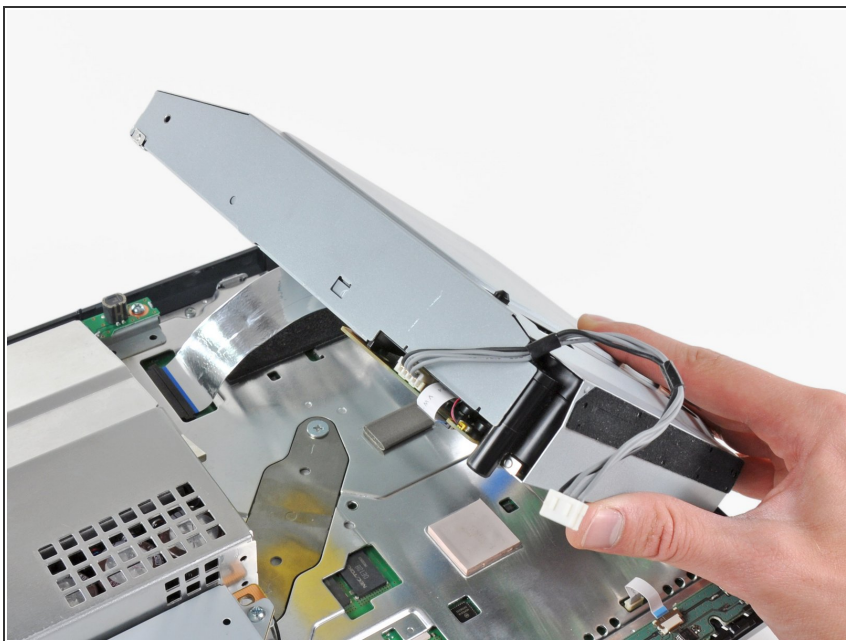
- Lift the top cover from its rear edge and rotate it toward the front of the PS3.
- Remove the top cover.
- There is a plastic hook located in a hole on the top back right hand side corner. Carefully push the plastic hook a bit from the rear of the machine with a spudger to release the rear right of the casing.

## Step 7 — Blu-ray Disc Drive



- Disconnect the Blu-ray power cable from the motherboard.
- ⓘ Pull the connector straight up and out of its socket.

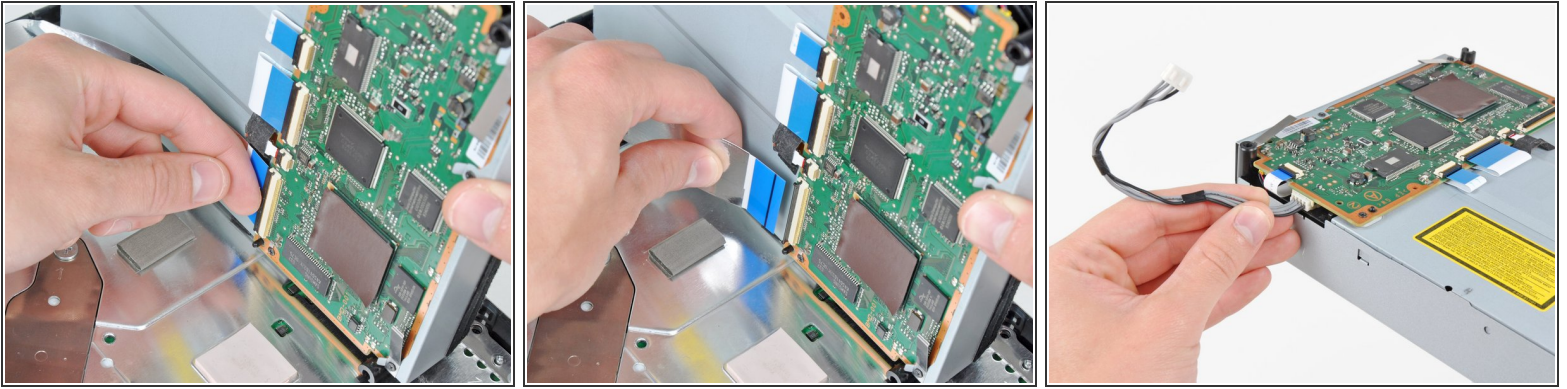
## Step 8



- Lift the Blu-ray drive from the edge nearest the power supply and rotate it away from the chassis enough to access its ribbon cable.



## Step 9

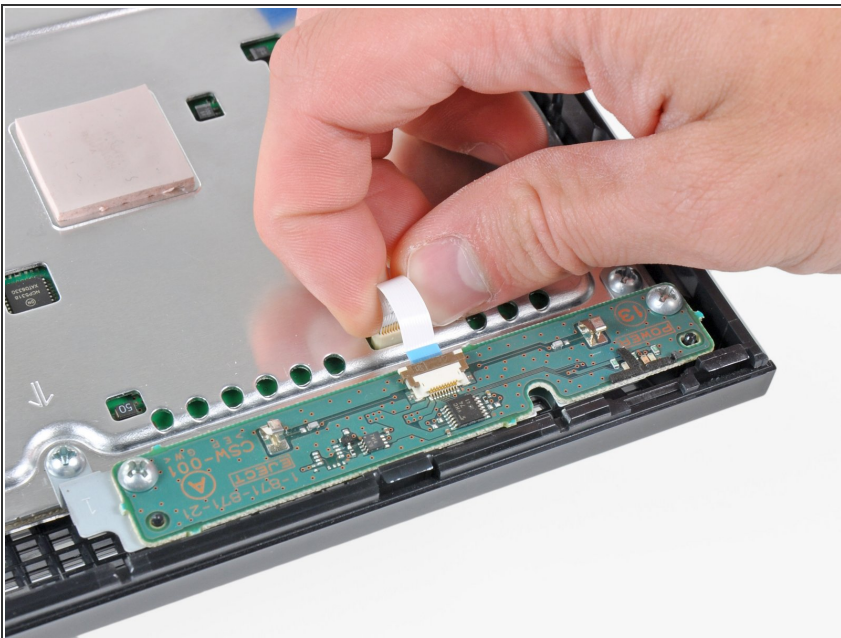


- Use your fingernail to flip up the retaining flap on the Blu-ray ribbon cable socket.

⚠ Be sure you are prying up on the retaining flap, **not** the socket itself.

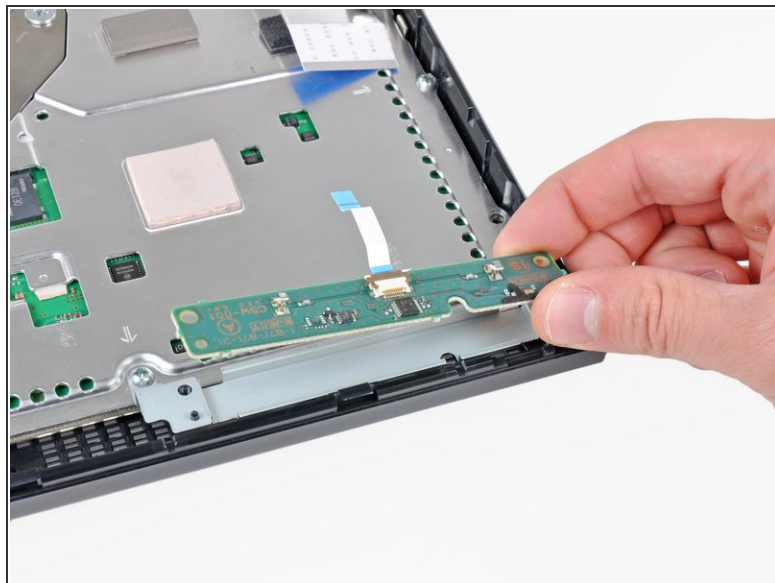
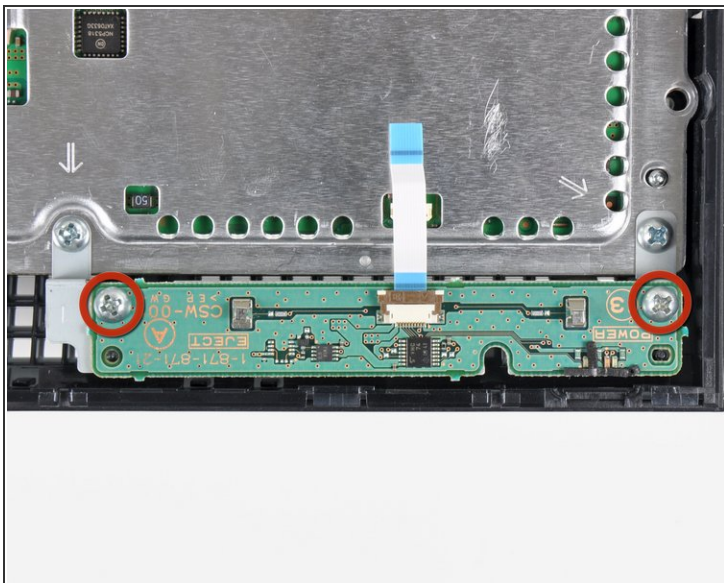
- Pull the ribbon cable out of its socket.
  - Remove the Blu-ray drive from the PS3.
- ☑ If replacing the Blu-ray drive, transfer the power cable to your new drive.

## Step 10 — Motherboard Assembly



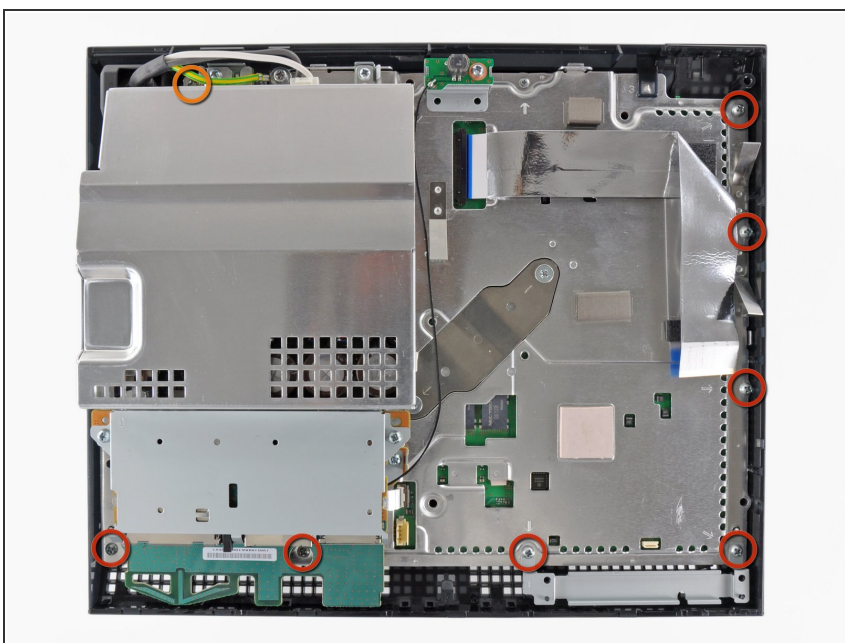
- Pull the control board ribbon cable straight up and out of its socket on the motherboard.

## Step 11



- Remove the two 12 mm Phillips screws securing the control board to the lower case.
- Remove the control board and its attached cable from the PS3.

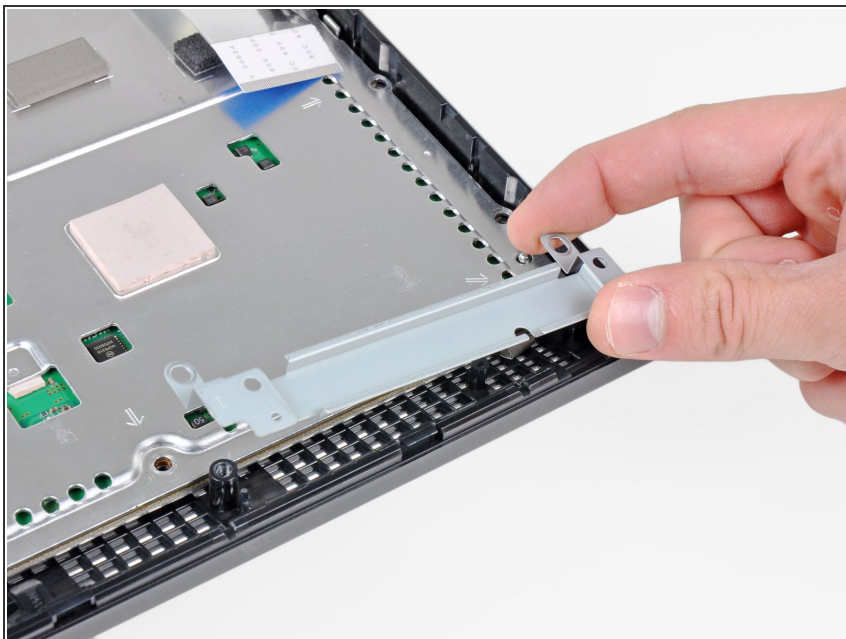
## Step 12



- Remove the following eight screws securing the motherboard assembly to the lower case:
  - Seven 12 mm Phillips screws (ph2)
  - One 30 mm Phillips screw



## Step 13



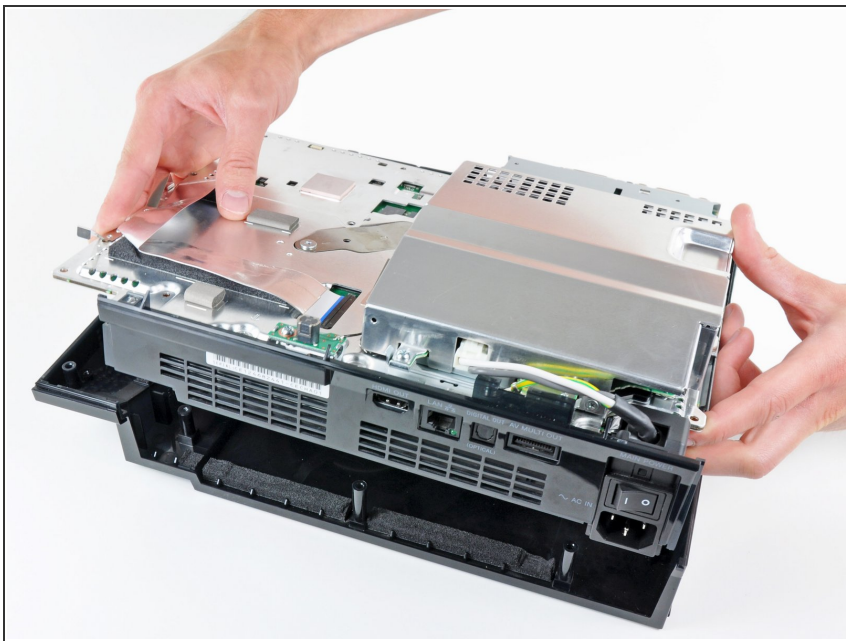
- Remove the control board bracket.

## Step 14



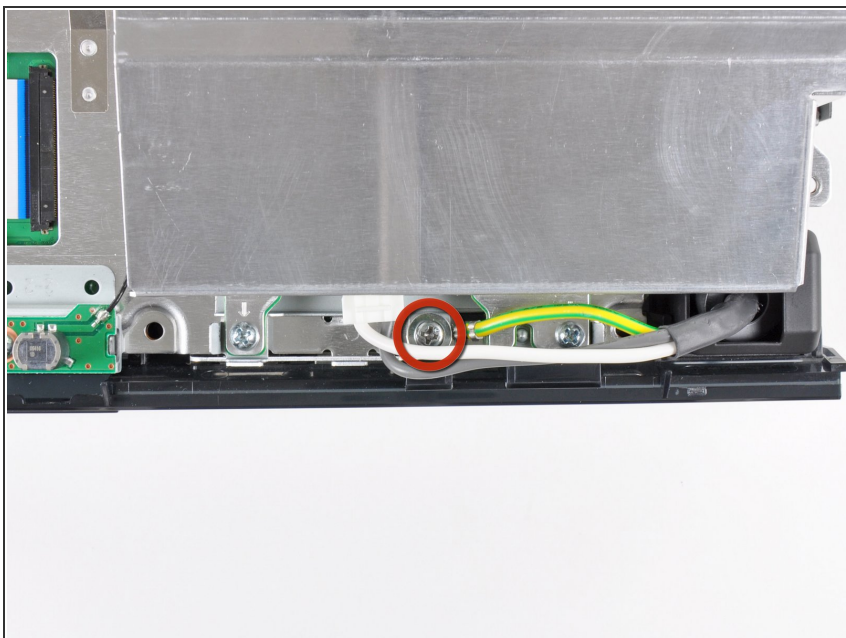
- Use the flat end of a spudger to pry the hard drive bay cover away from the lower case.
- Remove the hard drive bay cover.

## Step 15



- Lift the motherboard assembly out of the lower case.

## Step 16 — AC Inlet



- Remove the 7.7 mm Phillips screw securing the ground strap to the chassis.



## Step 17



- Pull the AC-In cables slightly away from the rear cover for clearance to access the AC-In connector.
- While depressing its locking mechanism, pull the AC-In connector out of its socket on the power supply.

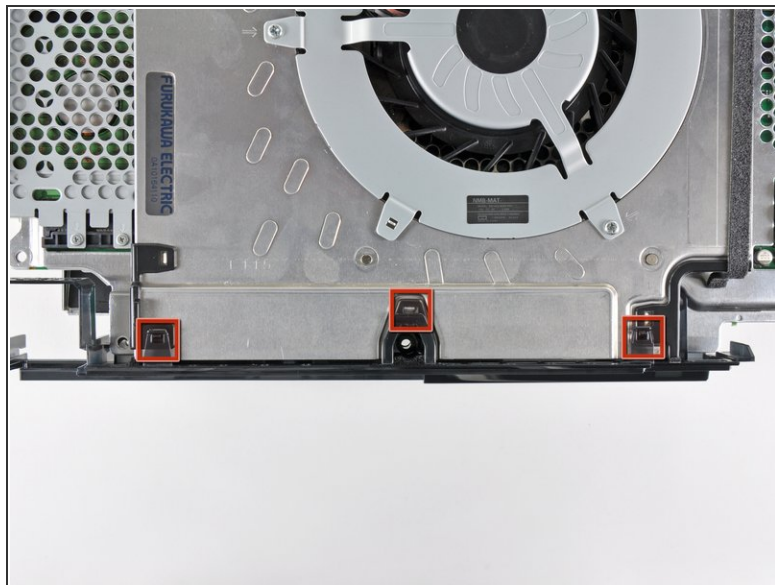
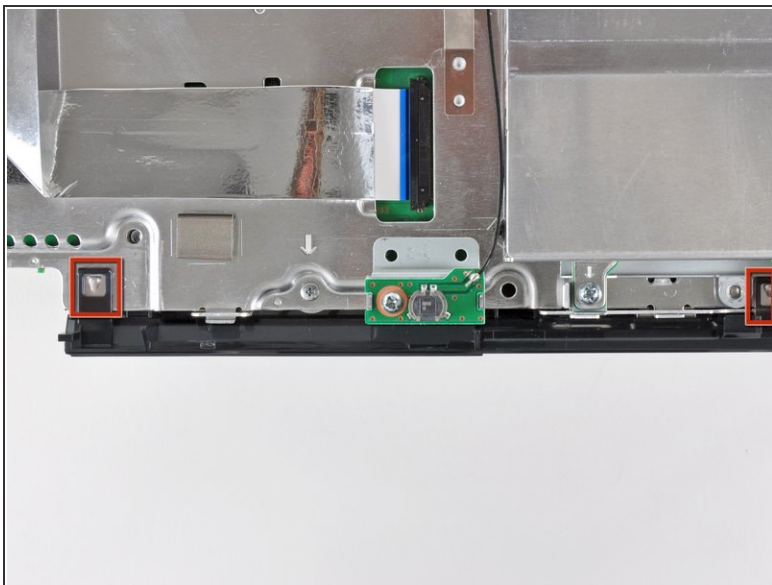
## Step 18



- Pull the AC inlet out from the bottom of the rear cover, minding any of its cables that may get caught.

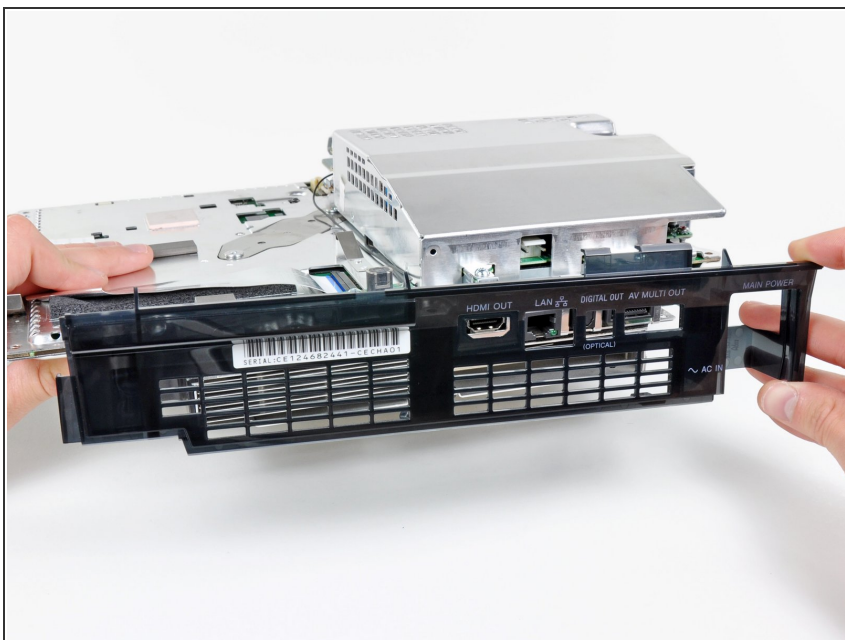


## Step 19 — Rear Cover



- While lightly pulling the rear cover away from the logic board assembly, use the flat end of a spudger to release the clips along the top and bottom edges of the rear cover.

## Step 20



- Remove the rear cover from the logic board assembly.

To reassemble your device, follow these instructions in reverse order.

This document was generated on 2023-01-22 02:33:33 PM (MST).

