



HP Mini 210-1035la Keyboard Replacement

Use this guide to replace the keyboard on your...

Written By: Internet Libre



INTRODUCTION

Use this guide to replace the keyboard on your HP Mini 210-1035la.

TOOLS:

[Pro Tech Toolkit](#) (1)

Step 1 — Keyboard



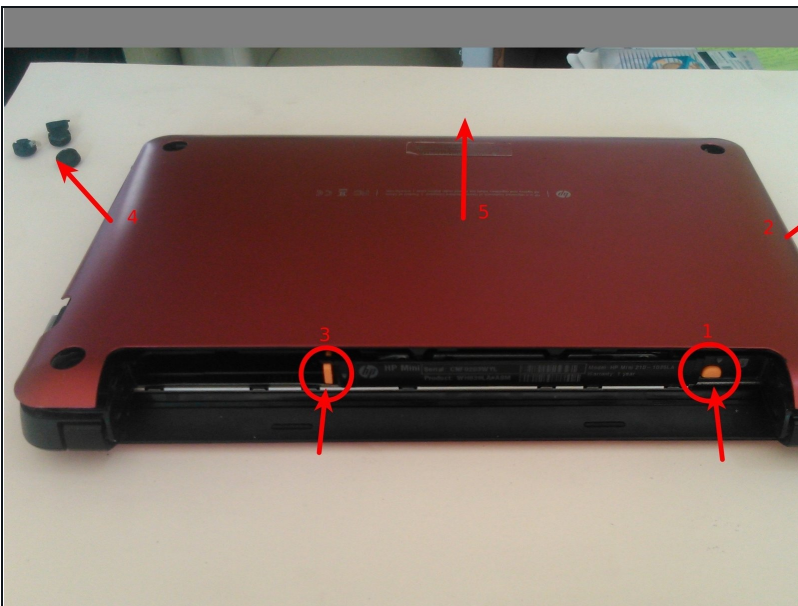
- Shut down the computer
- Flip the computer upside down
- Remove the battery by sliding its tabs in and pulling it away from the laptop.

Step 2 — Rubber feet



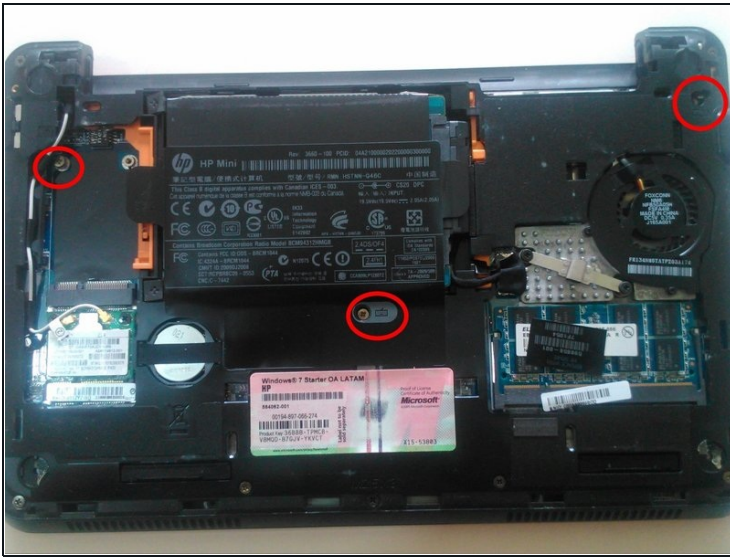
- Remove the 4 rubber feet

Step 3 — Removing service cover



- Simultaneously press in on the right release button (1) to release the right side of the service cover (2)
 - Simultaneously press in on the left release button (3) to release the left side of the service cover (4)
- i** Reverse this procedure to insert the service cover

Step 4 — Keyboard's screws



- Remove the three screws (circled in red) that hold the keyboard
- With the computer facing you, turn it right-side up.
- Completely open the computer

Step 5 — Remove keyboard



- Lift the back edge of the key board until it rest at an angle
- Slide the keyboard back until the keyboard cable and connector are accessible
- Release the connector to which the keyboard cable has been attaching, and then disconnect the keyboard cable
- Remove the keyboard

To reassemble your device, follow these instructions in reverse order.