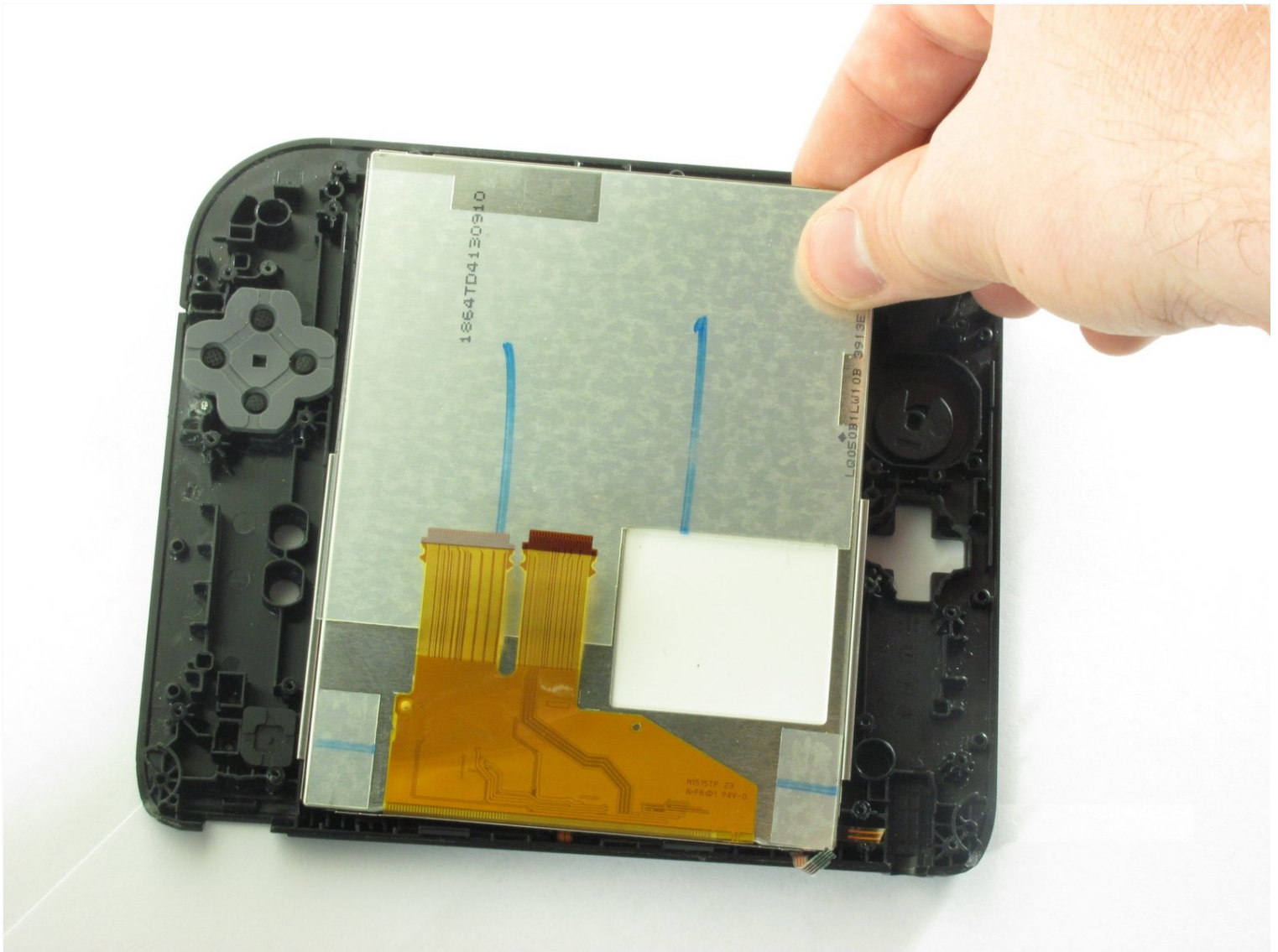




Nintendo 2DS Screen Replacement

This guide shows how to access the Nintendo 2DS...

Written By: Fina Beauchamp



INTRODUCTION

This guide shows how to access the Nintendo 2DS screen for repair and cleaning purposes.



TOOLS:

Phillips #00 Screwdriver (1)
Phillips #000 Screwdriver (1)
Nylon-Tip Reverse Tweezers (1)



PARTS:

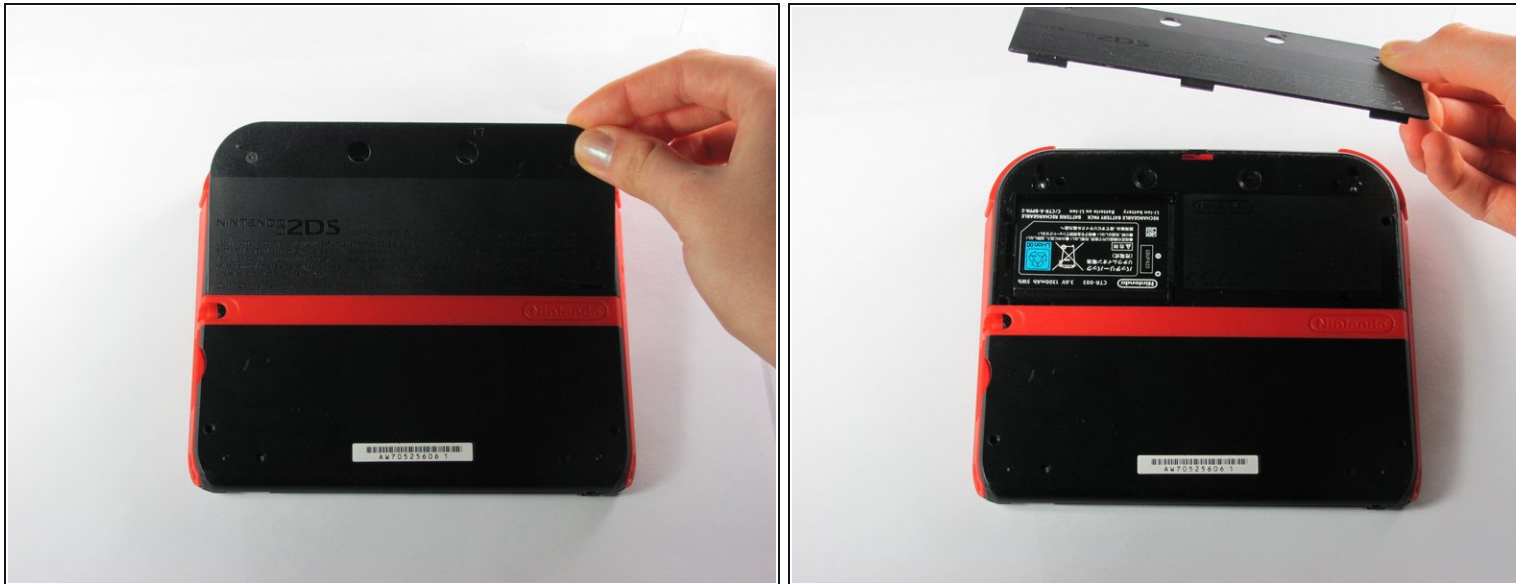
Nintendo 3DS Battery (1)
1 x 2DS LCD (1)
Nylon Tipped Tweezers (1)

Step 1 — Battery



- Remove the two Phillips captive screws securing the upper rear panel.
- ⓘ The captive screws will not completely detach from the back panel.

Step 2



- Hinge the upper rear panel upwards and outwards to remove it.

Step 3



- Remove the battery from its housing by lifting it up from the side closest to the outside edge.

Step 4 — Rear Panel



- Remove the ten Phillips screws attaching the rear panel.

Step 5



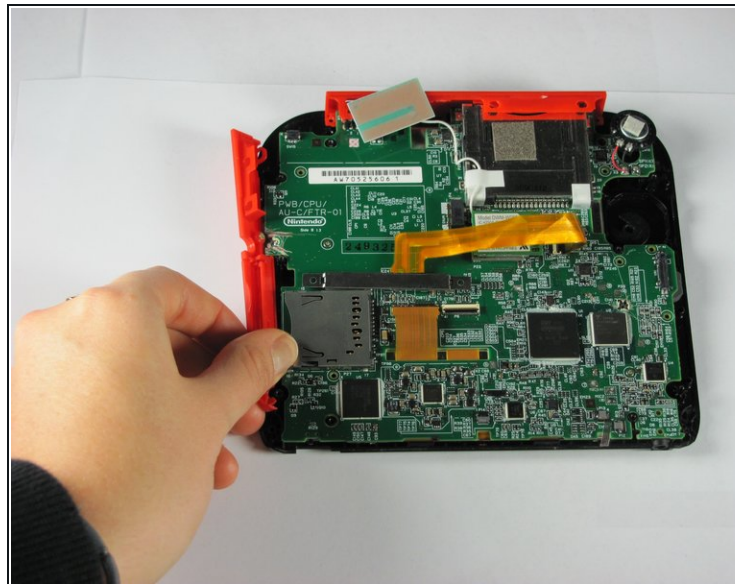
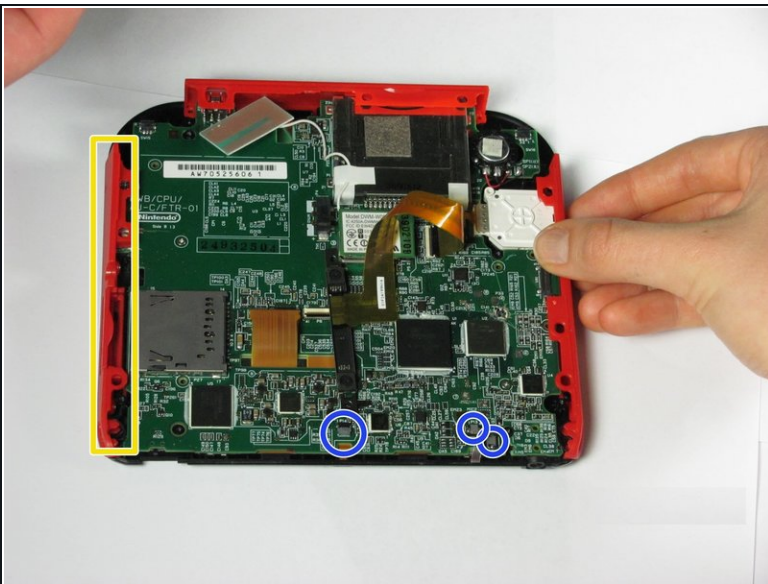
- ⓘ The rear panel is attached to the motherboard by a ribbon cable, so be careful not to lift the rear panel too far from the device.
- Carefully pull the rear panel straight up from the device.

Step 6



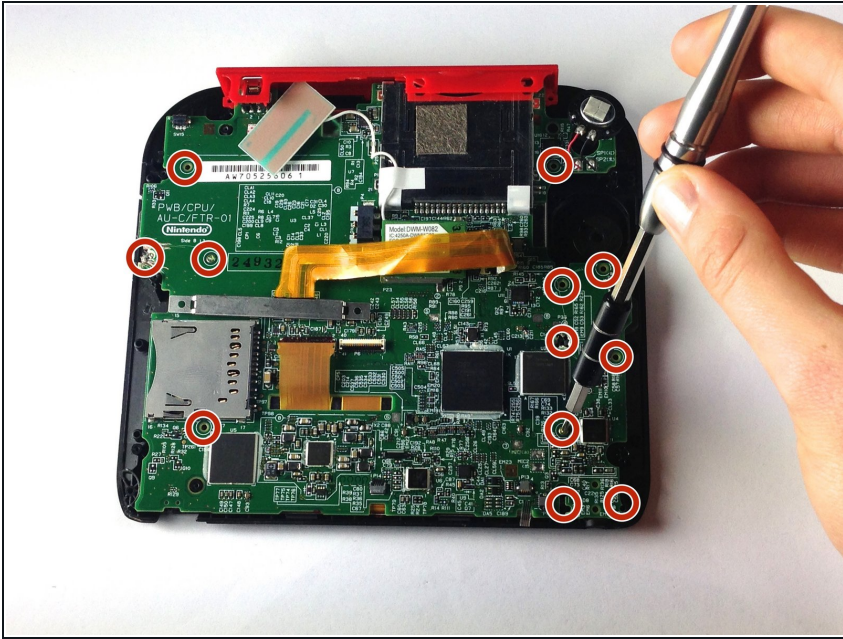
- Use your fingernail or the flat end of a spudger to flip up the connector securing the ribbon cable to the motherboard
- Remove the cable from the connector
- ⓘ Take the opportunity to remove the Left and Right triggers, they have hinges that may break and springs that may jump away.

Step 7 — Remove Side Panels



- Hold the side panels of the device's case with your fingers and pull outward to remove them.
- ⓘ The panels should come off easily with little force required.
- There are three ribbon cables which have already been unplugged in this picture, disconnect these before disassembling the device further.

Step 8 — Unscrew Motherboard

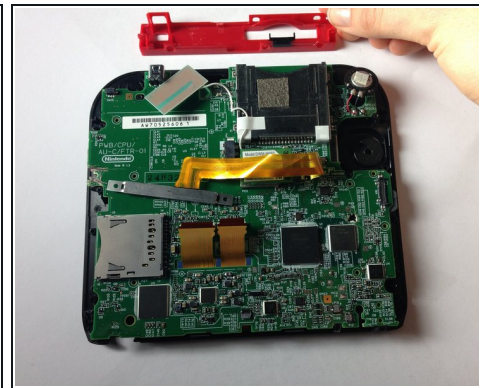
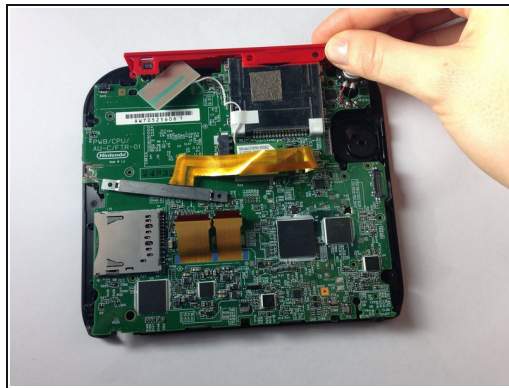
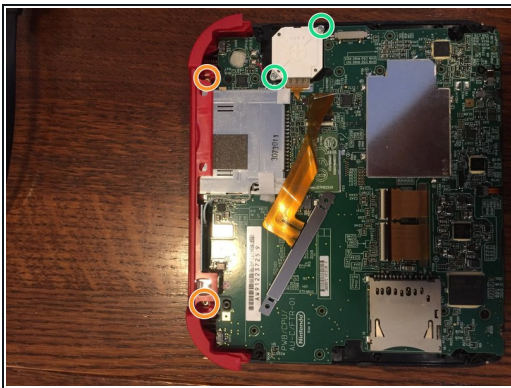


- Remove the 12 brass-colored Phillips screws securing the main board.

⚠ Be **very** careful not to strip any of these screws. Stripping can occur very easily, and may make replacement of the motherboard impossible.

i The circle pad has disappeared in this picture. Don't worry, we'll deal with that in the next step

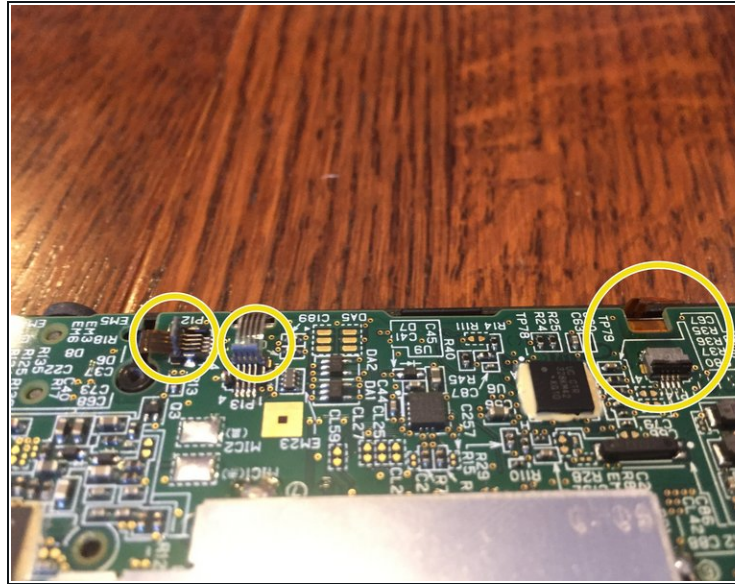
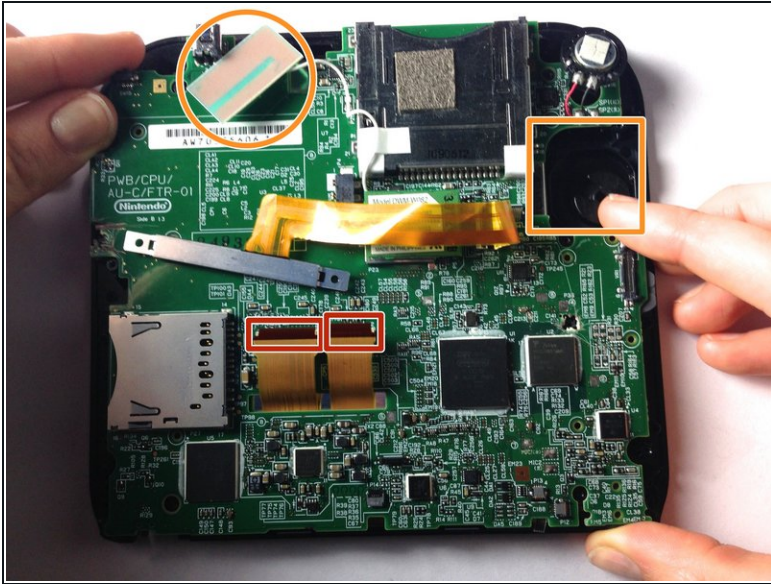
Step 9 — Remove Top Panel



i The top panel can only be removed when the mother board is not secured.

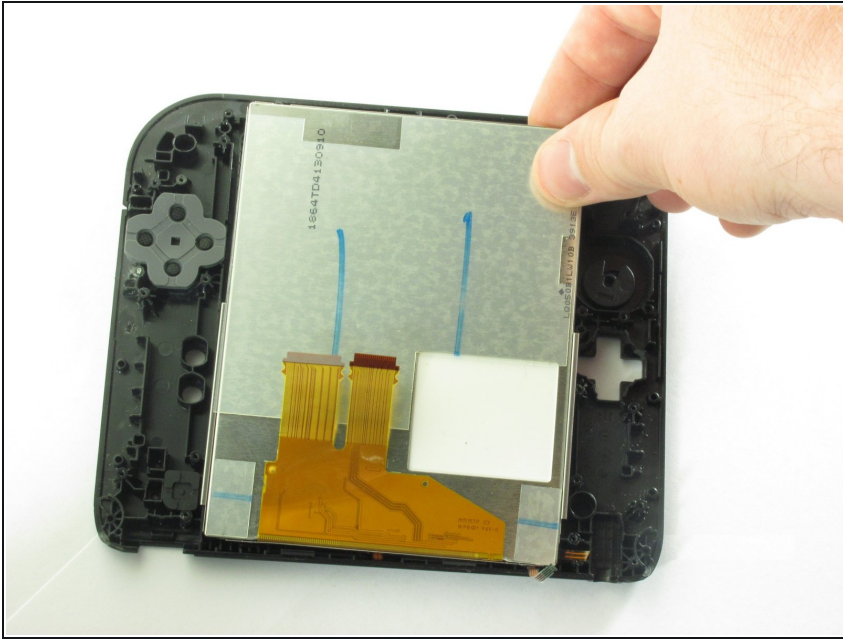
- There are two additional screws located on the top rail. Remove these to fully remove the buttons and top rail.
- There are two screws holding down the joystick base that must be removed. (Be careful of the ribbon cable—it stays connected!)
- Hold the top panel with your fingers and pull away from the device to remove it.
- i** The top panel should come off easily, with very little force applied.

Step 10 — Remove Motherboard



- Detach the 2 ribbon cables by lifting the black flip connectors that hold them.
- Lift out the rectangular board seated in the face and lift out the white square which is the joystick motor (takes a little effort). Both stay attached to the motherboard.
- On some models, you'll need to remove three more tiny ribbon cables at the bottom of the screen. They are secured by flip up connectors. BE GENTLE!
- Holding the motherboard on either side, lift to remove it.

Step 11 — Screen Replacement



- ❗ Ensure that the ribbon cables connecting the screen to the motherboard have been disconnected before removing the screen from the front panel casing.
- Grasp the screen firmly by a corner and lift it off of the front panel of the Nintendo 2DS.
- ❗ There should be slight resistance due to the double-sided adhesive strip on the screen.

To reassemble your device, follow these instructions in reverse order.