



DJI Phantom Case Top Shell Replacement

prerequisite only to separate but not remove the top shell

Written By: David Hoyt






TOOLS:

- [2 mm Hex Screwdriver](#) (1)
 - [Phillips #0 Screwdriver](#) (1)
-

Step 1 — Remove Case Screws



-  After removing all four propellers, flip the drone over.
- Remove the following screws from the underside of the drone:
 - Twelve 2.0 mm hex screws
 - Four Phillips #0 screws

Step 2 — Unplug Magnetometer




- Loosen the cable from the plastic landing gear.
- Unplug the magnetometer mox connector.

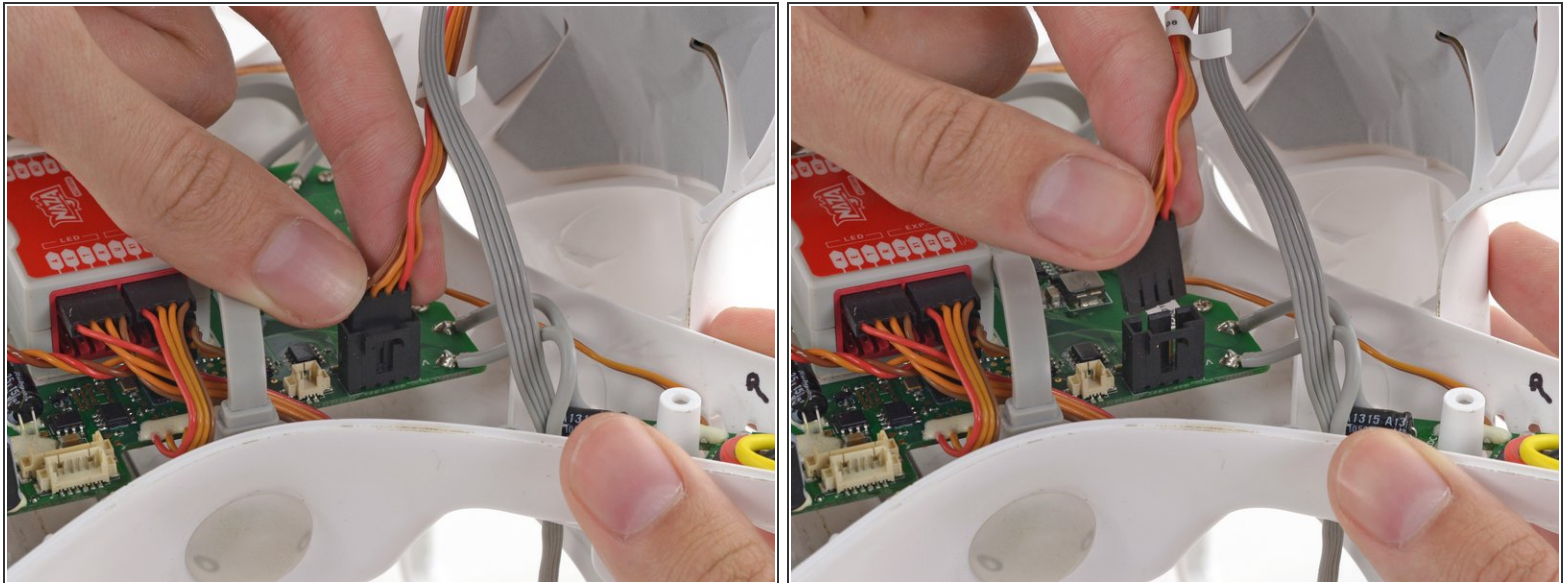
Step 3 — Remove the Top Shell



- Lift up on the top portion of the shell and set it on its side.

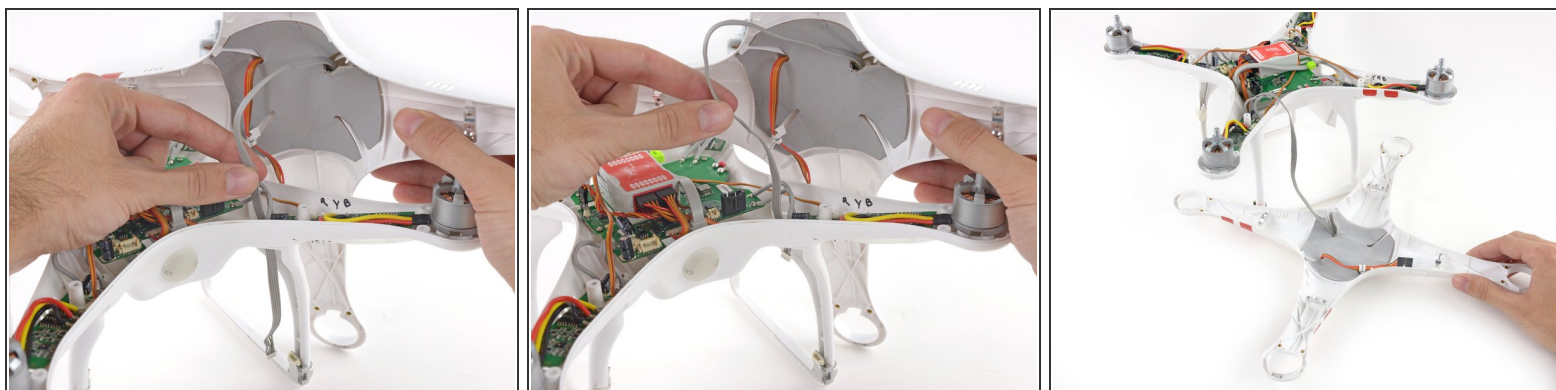
 **Do not** attempt to fully remove the case. The GPS and Magnetometer cables connect the top shell to the rest of the Phantom, be careful not to stress or break these cables.

Step 4 — Disconnect GPS Cable



- Lift the GPS cable molex connector up out of its socket on the main board.

Step 5 — Loosen Magnetometer Cable



- Gently pull the slack of the magnetometer cable through the case bottom shell.
- The case top shell should now have enough slack to work on the interior of the Phantom.

To reassemble your device, follow these instructions in reverse order.