



Samsung HMX-W300 USB Port Replacement

To replace USB port, remove battery first and...

Written By: Robert



INTRODUCTION

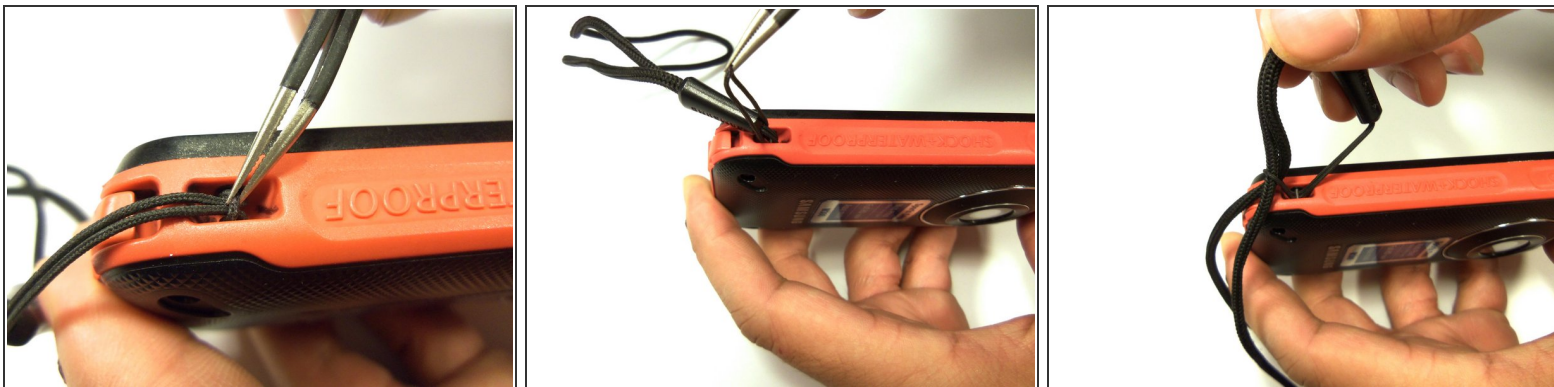
To replace USB port, remove battery first and then remove the USB port while connected to a wire.



TOOLS:

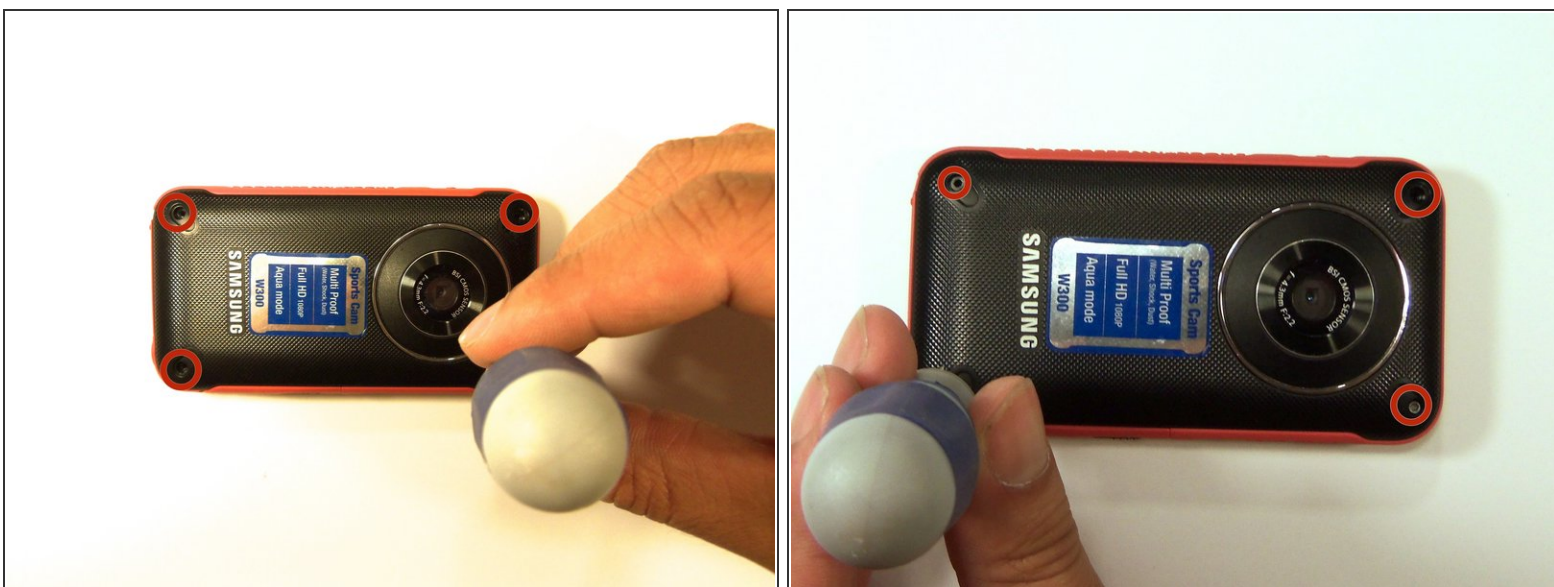
- [1.5mm Hex Screwdriver](#) (1)
 - [Phillips #00 Screwdriver](#) (1)
 - [iFixit Opening Tool](#) (1)
-

Step 1 — Disassembling Samsung HMX-W300



- To remove the wristband of the device, grab the middle loop and pull the band through.

Step 2



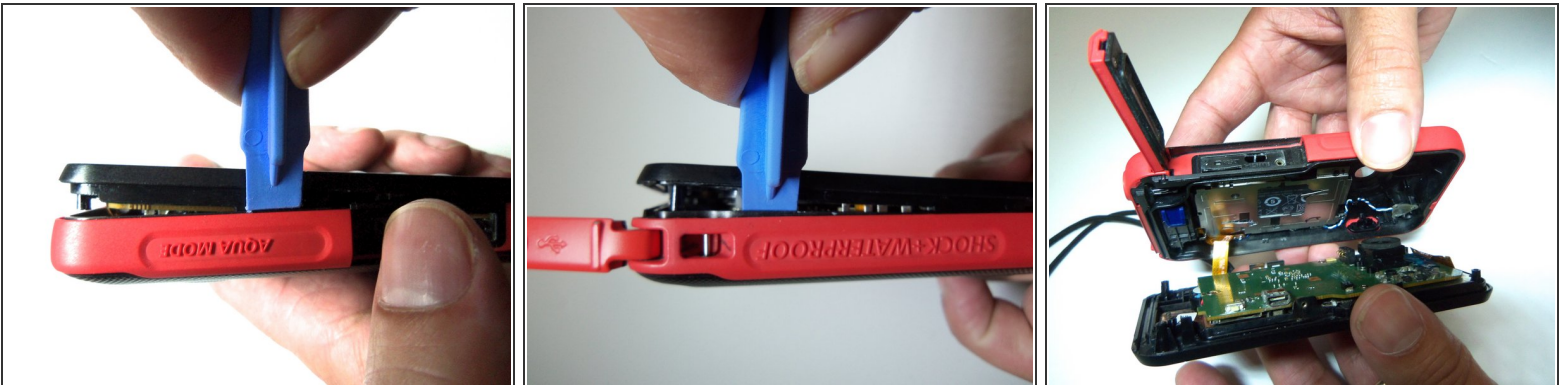
- Remove four screws with a Hex 1.5 mm screwdriver.

Step 3



- Open the HDMI door on the side of the camera.
- Remove the single screw using a Phillips #00 screwdriver.

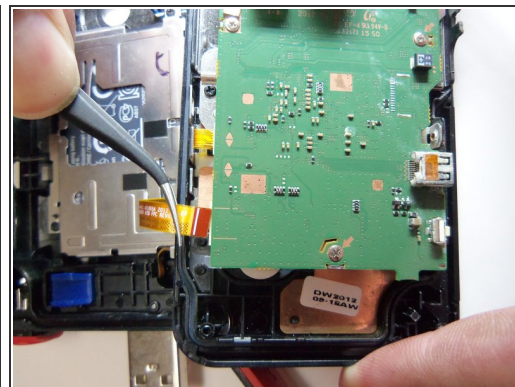
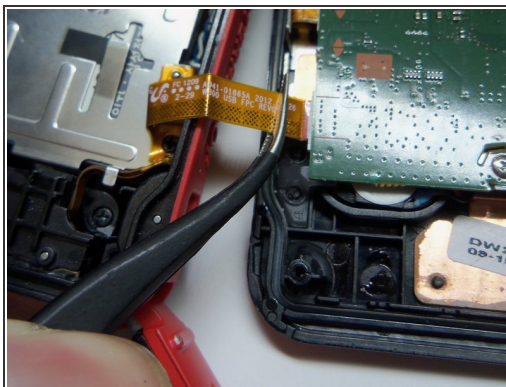
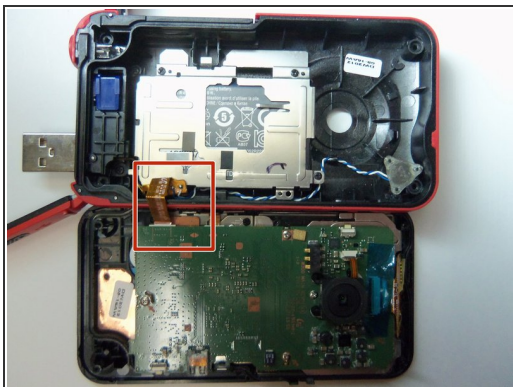
Step 4



- Use the iFixit opening tool on both sides on the device. Pry apart both sections with light force.

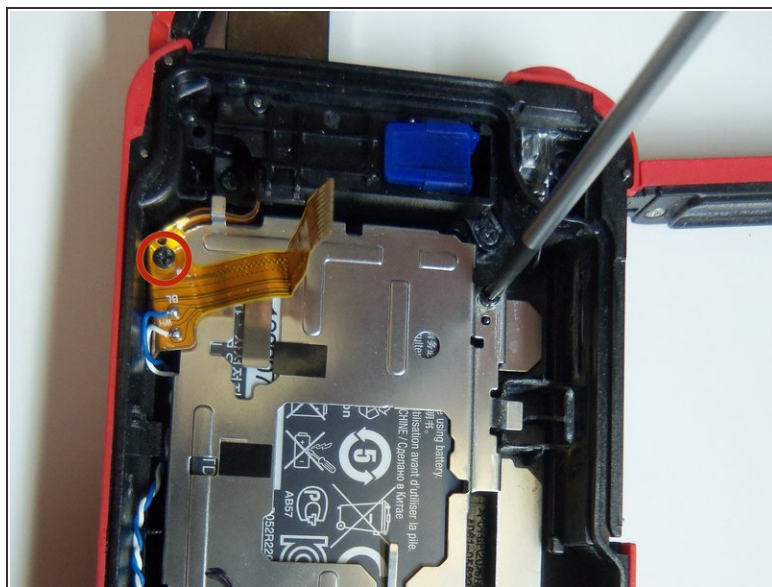
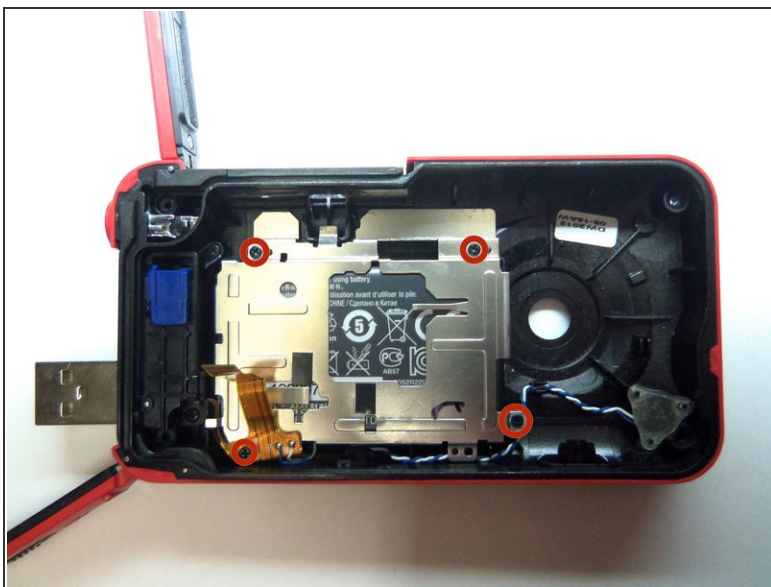
⚠ Do not apply too much force. There is a wire that attaches the front case with the rear case that can be damaged.

Step 5



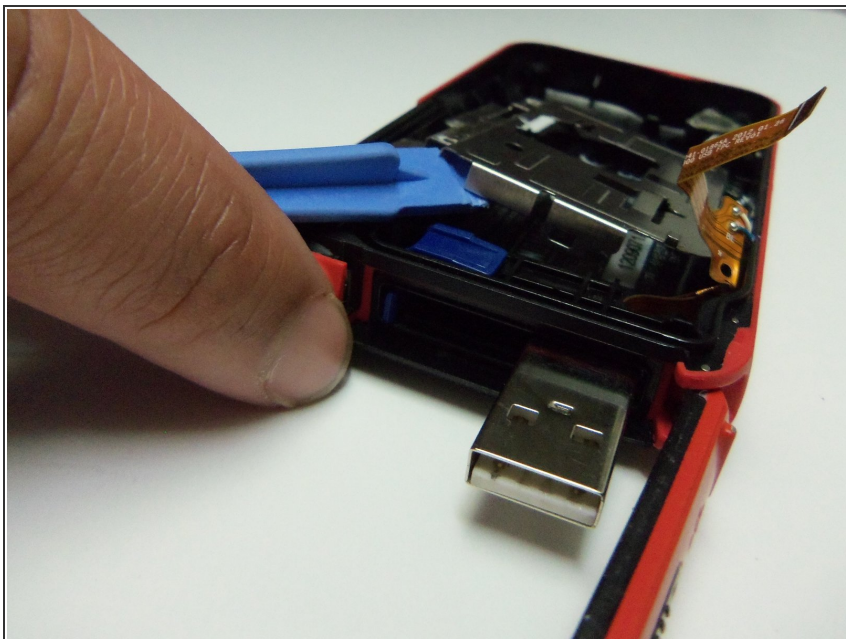
- Pull the wire ribbon out with a pair of tweezers.

Step 6 — Battery



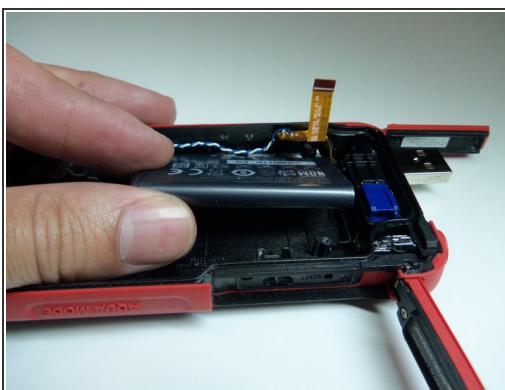
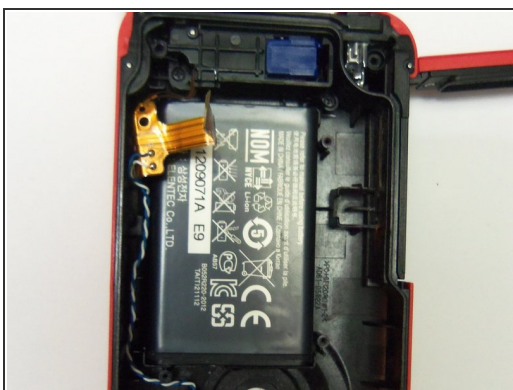
- Remove the four screws from the battery housing using a Phillips #00 screwdriver.

Step 7



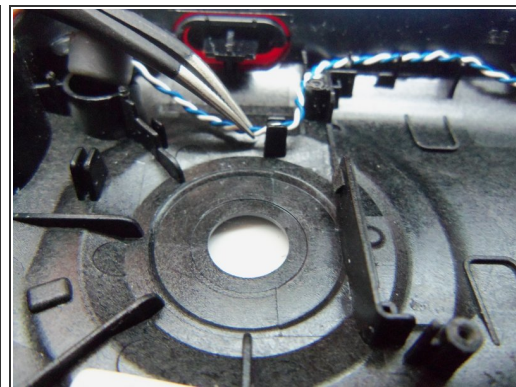
- Use the iFixit opening tool to pry the battery housing open.

Step 8



- After removing the battery housing, take the battery out.

Step 9 — USB Port



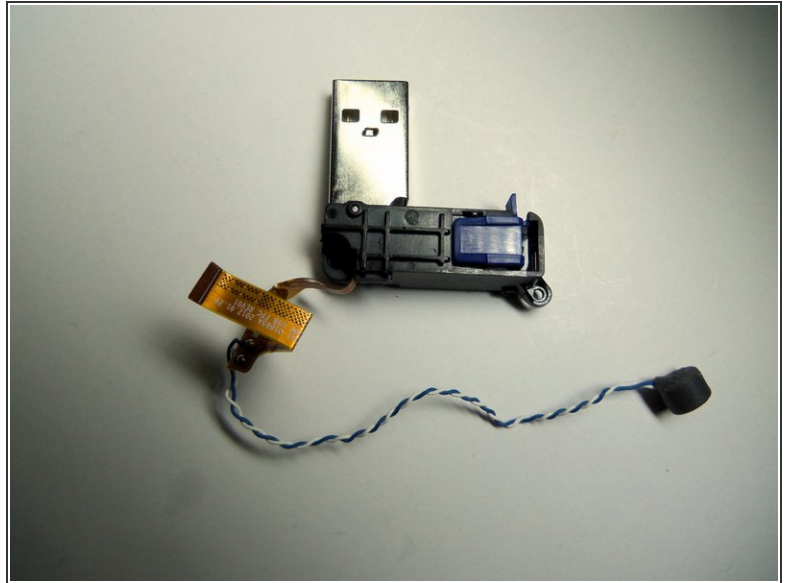
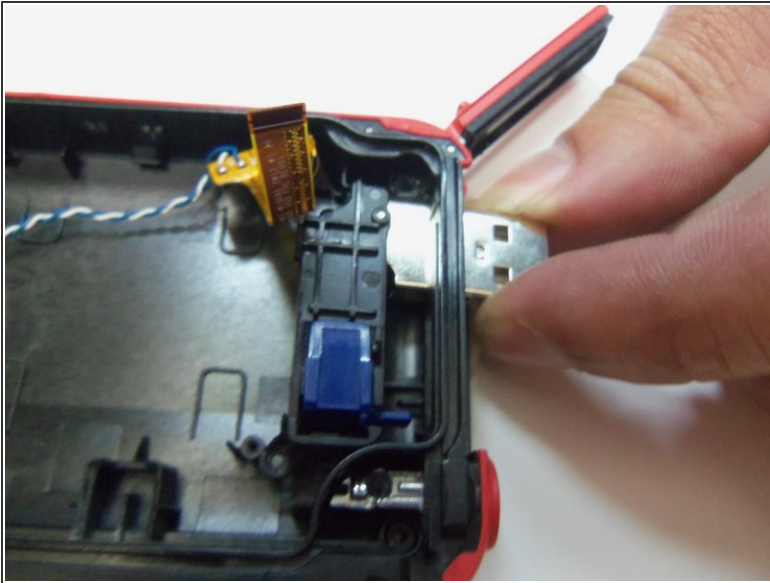
- Use an iFixit opening tool to pry up the plastic cover.
- Use tweezers to remove the wire from the slots.

Step 10



- Remove both screws from the USB port using a Phillips #00 screwdriver.

Step 11



- Push the USB port inside the case to remove it from the device.

To reassemble your device, follow these instructions in reverse order.