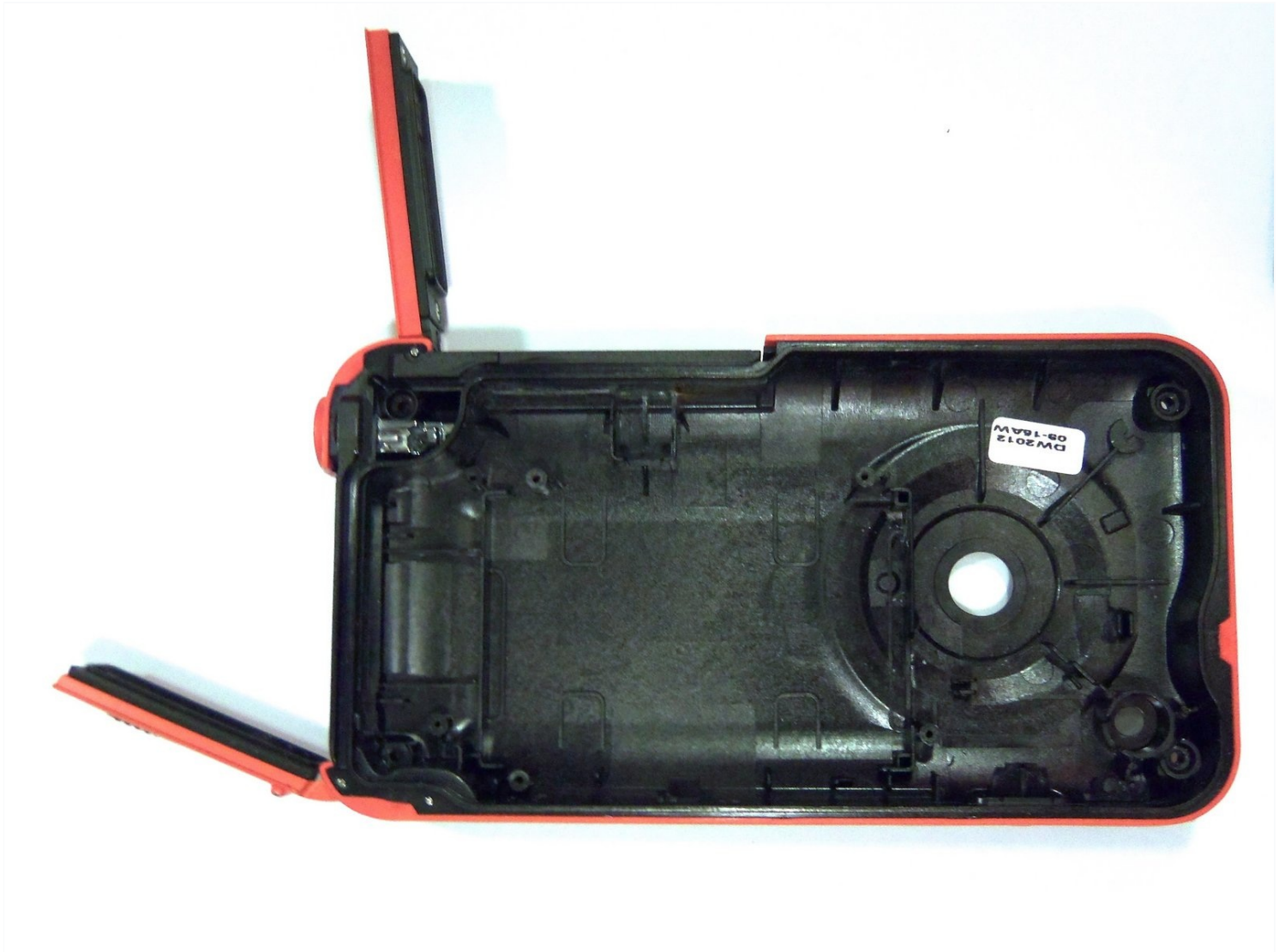




Samsung HMX-W300 Front Case Replacement

Demonstrates how to replace the front case of...

Written By: Robert



INTRODUCTION

Demonstrates how to replace the front case of the camera through pictures and words. Replacement of the rear case requires disassembling battery housing and battery from front case.

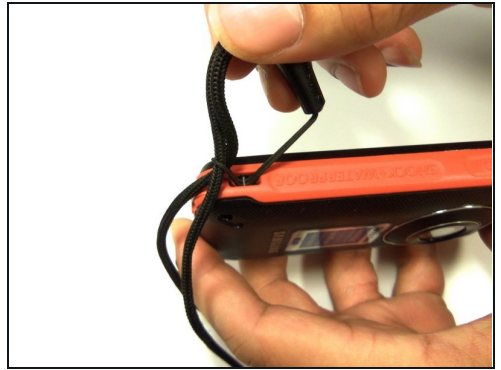
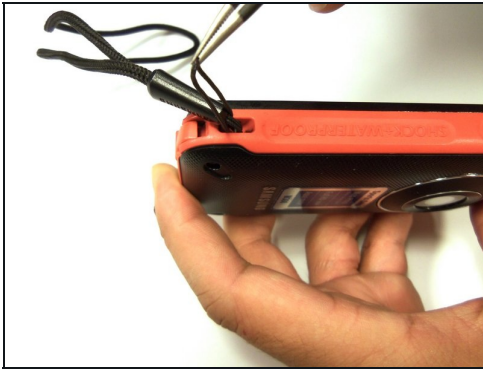
TOOLS:

[1.5mm Hex Screwdriver](#) (1)

[Phillips #00 Screwdriver](#) (1)

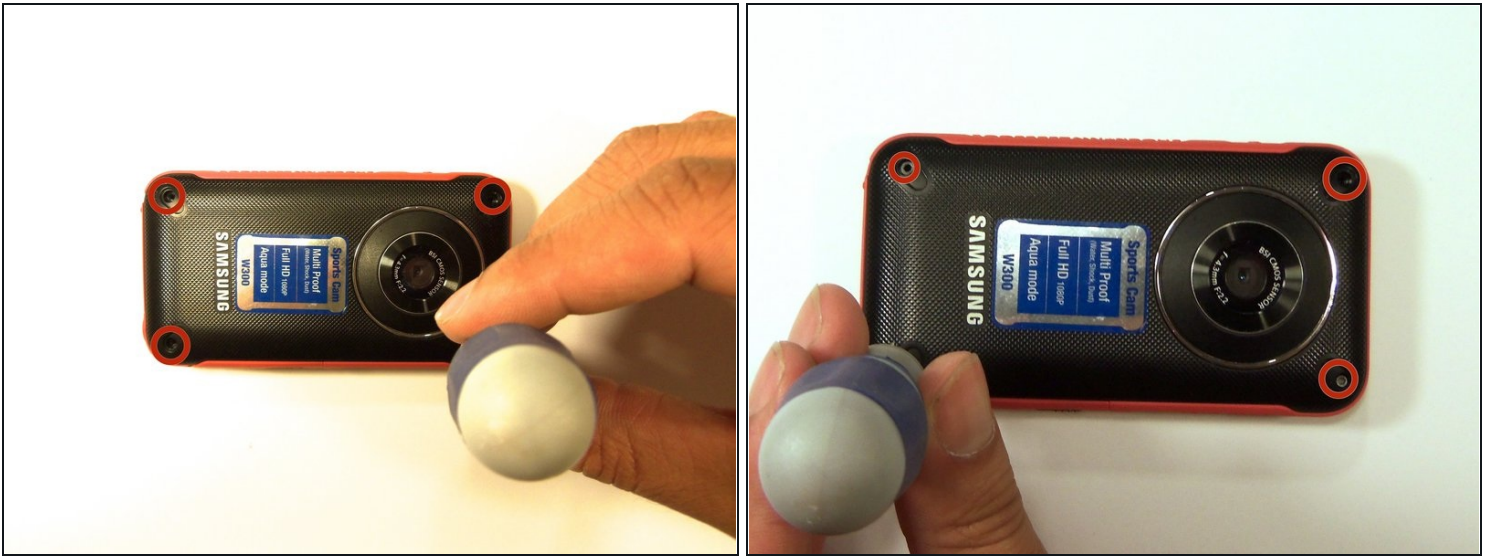
[iFixit Opening Tool](#) (1)

Step 1 — Disassembling Samsung HMX-W300



- To remove the wristband of the device, grab the middle loop and pull the band through.

Step 2



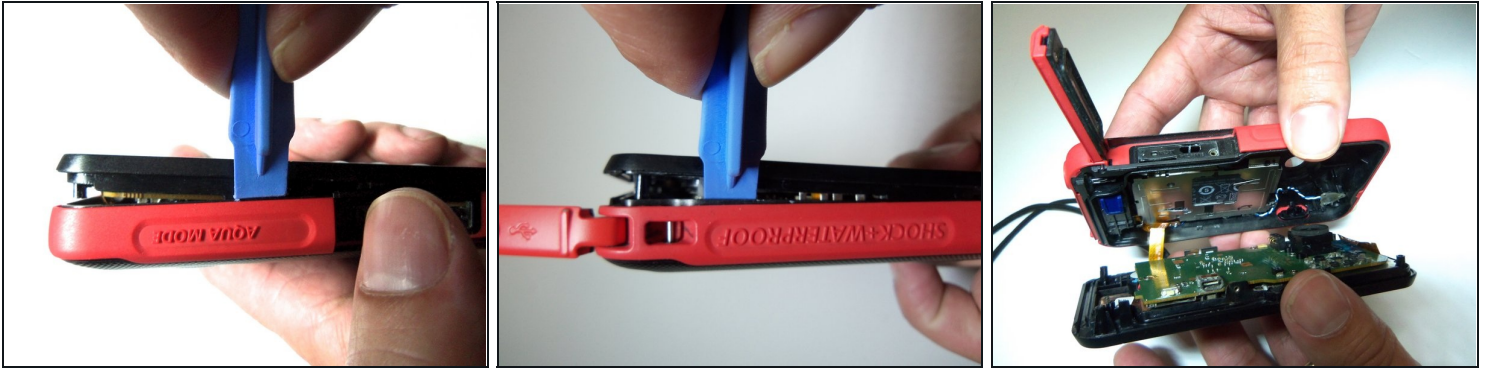
- Remove four screws with a Hex 1.5 mm screwdriver.

Step 3



- Open the HDMI door on the side of the camera.
- Remove the single screw using a Phillips #00 screwdriver.

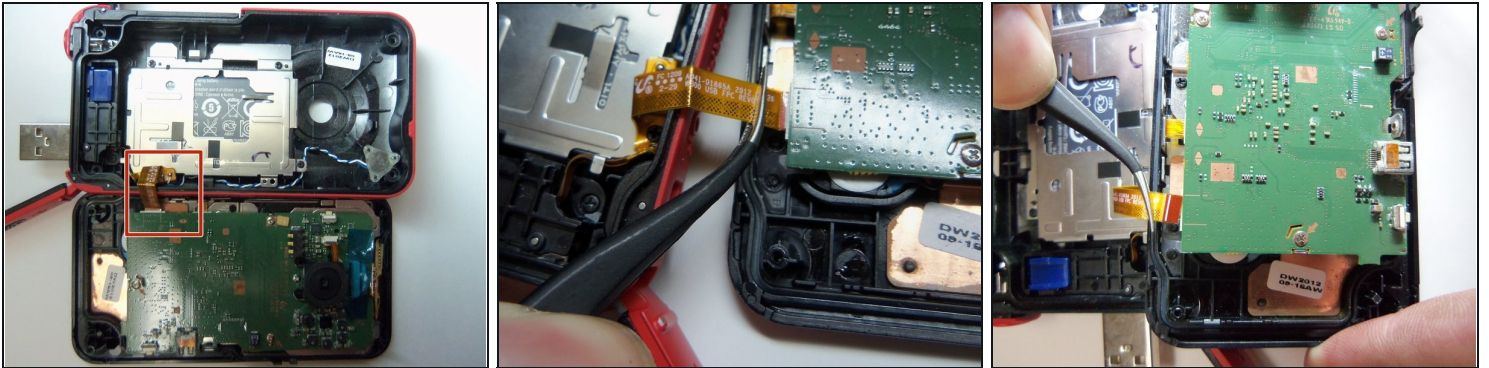
Step 4



- Use the iFixit opening tool on both sides on the device. Pry apart both sections with light force.

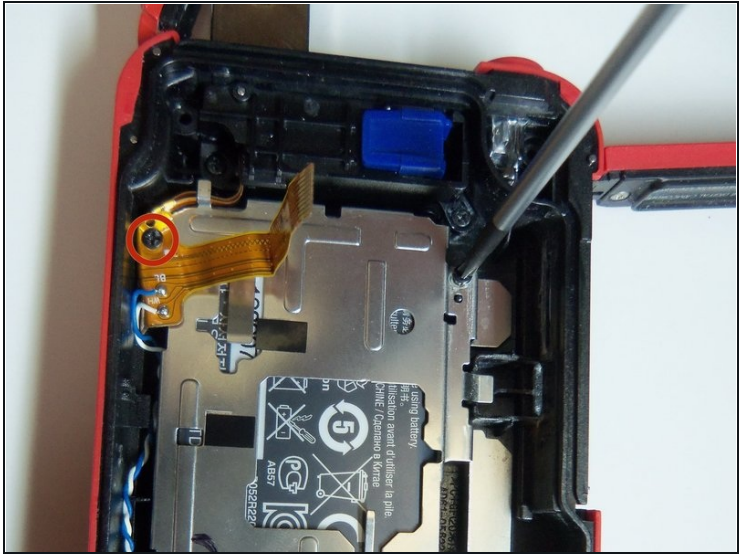
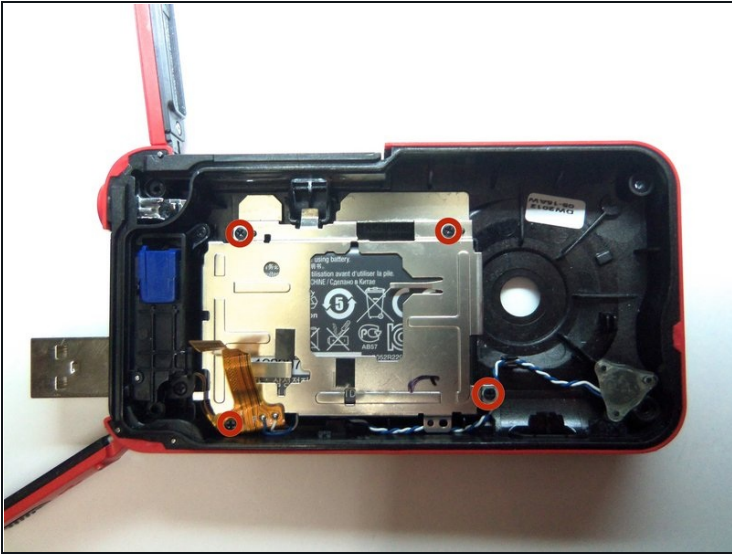
⚠ Do not apply too much force. There is a wire that attaches the front case with the rear case that can be damaged.

Step 5



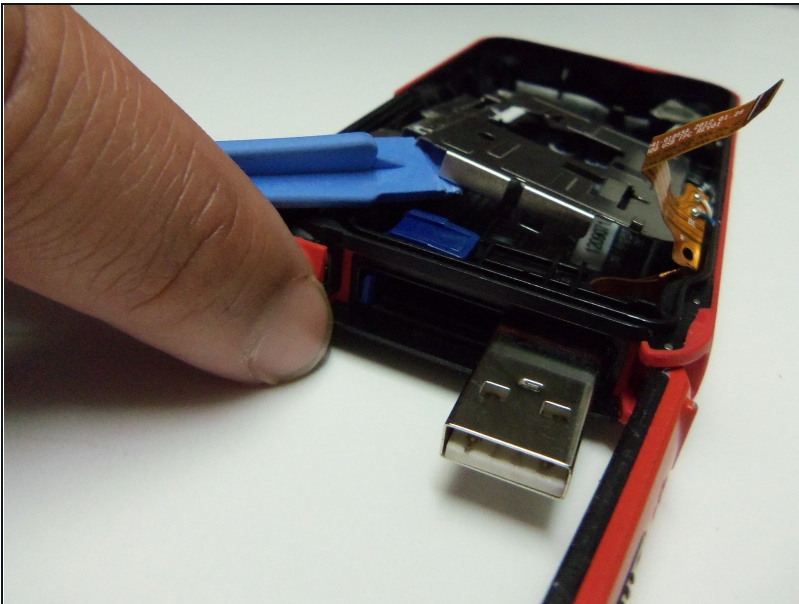
- Pull the wire ribbon out with a pair of [tweezers](#).

Step 6 — Battery



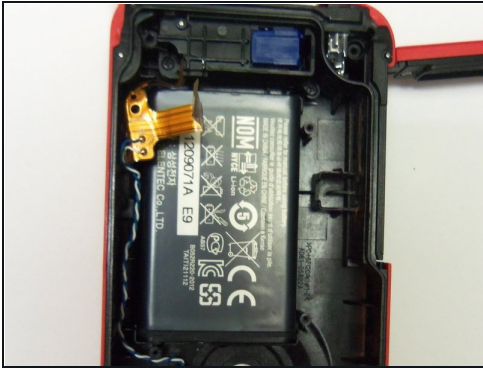
- Remove the four screws from the battery housing using a Phillips #00 screwdriver.

Step 7



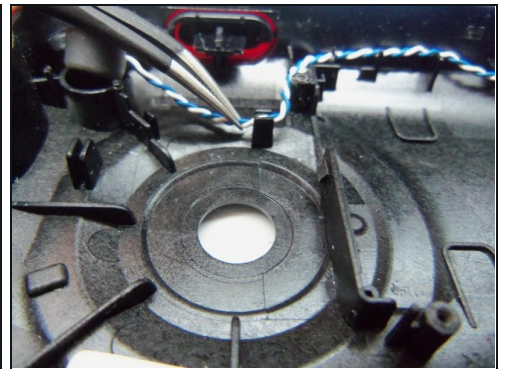
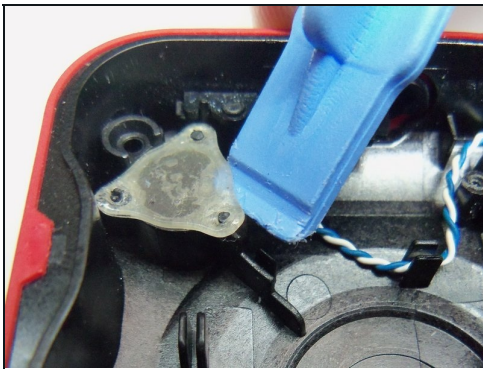
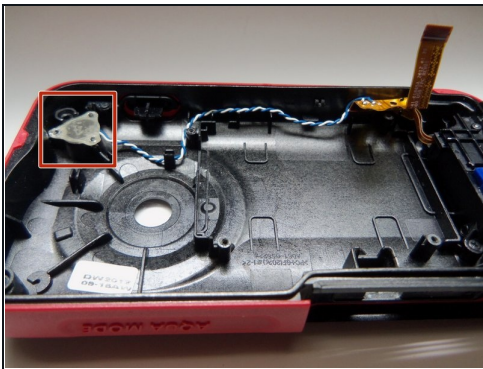
- Use the iFixit opening tool to pry the battery housing open.

Step 8



- After removing the battery housing, take the battery out.

Step 9 — USB Port



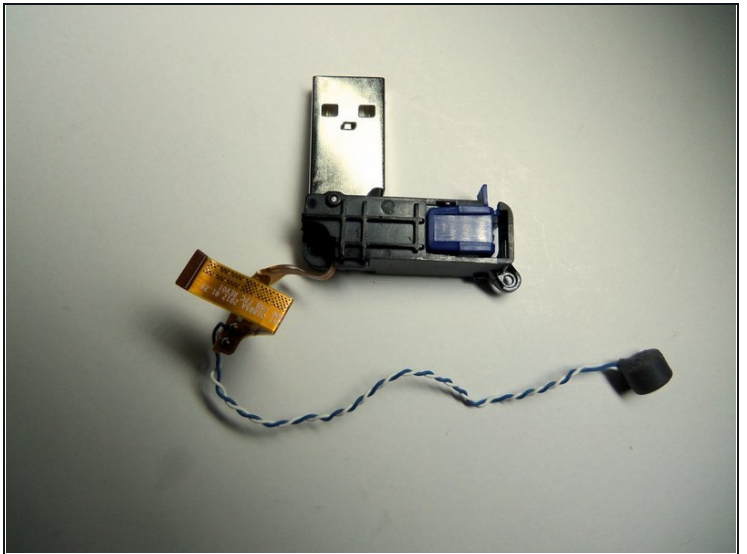
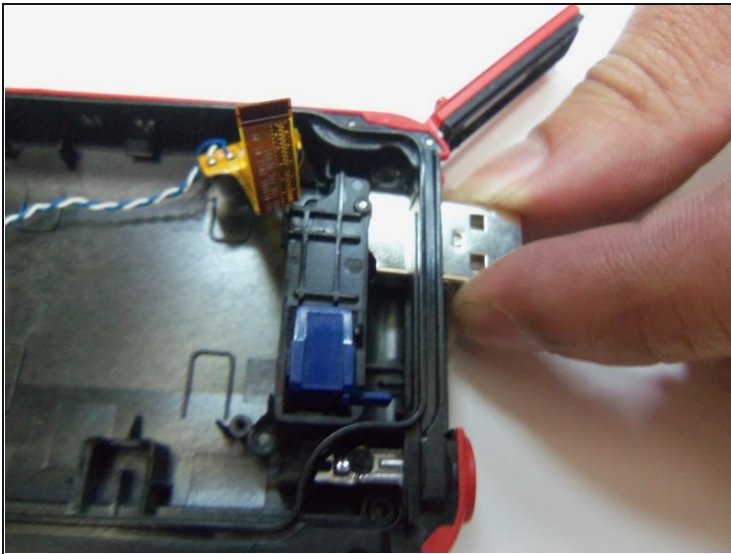
- Use an iFixit opening tool to pry up the plastic cover.
- Use [tweezers](#) to remove the wire from the slots.

Step 10



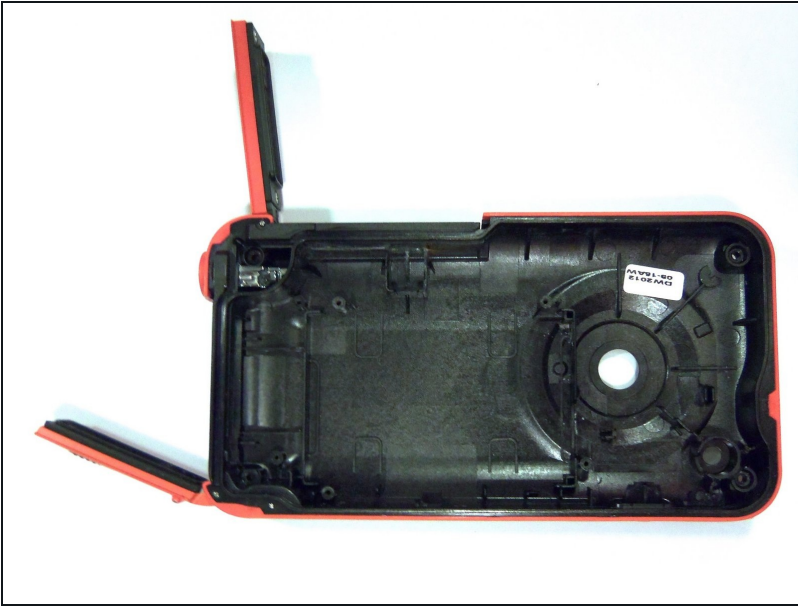
- Remove both screws from the USB port using a Phillips #00 screwdriver.

Step 11



- Push the USB port inside the case to remove it from the device.

Step 12 — Front Case



- The front case is separated from the rest of the device.

To reassemble your device, follow these instructions in reverse order.