



5 Tips and Tricks

Sony Xperia Z2 5 tips and tricks

Written By: ZFix



XPERIA

5 Tips and Tricks

INTRODUCTION

A few interesting tricks for your smartphone.

Safe Mode, Test Menu, Developer Menu, Retail Demo Mode, Hard & Soft Reset

[video: <http://youtu.be/Ws4BmZ0Sg5A>]

TOOLS:

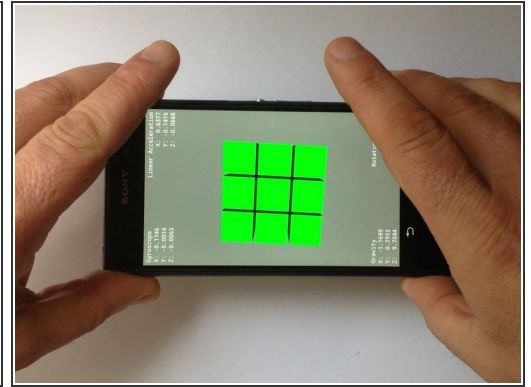
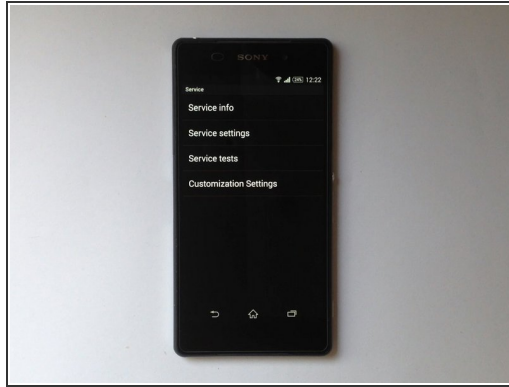
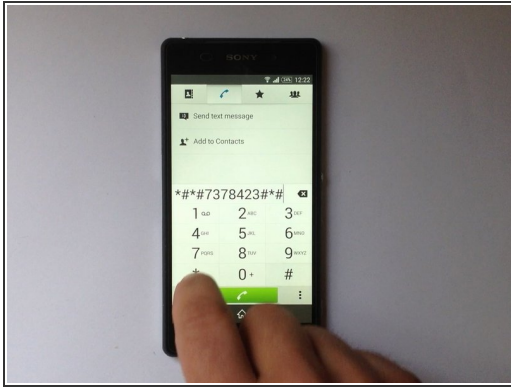
- [SIM Card Eject Tool](#) (1)
-

Step 1 — SAFE MODE



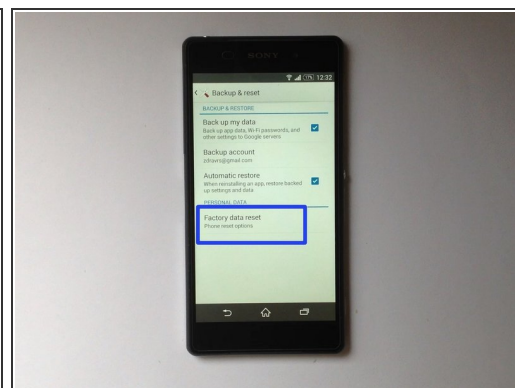
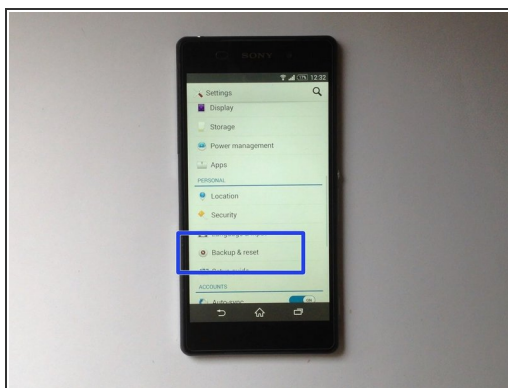
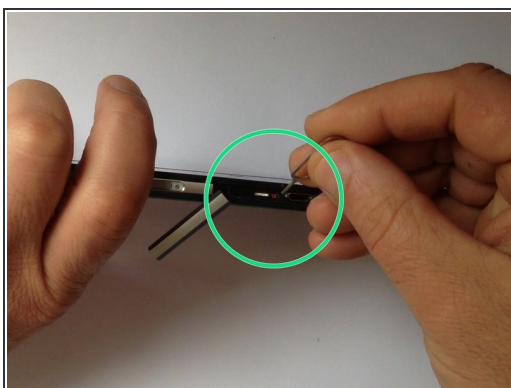
- **SAFE MODE** allows you to turn on the device with third-party apps disabled. Then you can easily remove all apps that maybe causing a conflict or a software problem.
- **First way to enter the device into Safe mode:**
 - Press the Power off button. In the "Power off" menu tab and hold Power off option until you see "Reboot to safe mode" menu.
- **Second way to enter the device into Safe mode:**
 - Turn off the phone. Turn on the phone and when you see the Xperia logo press and hold the **Volume down** button. Hold it until the device enter into Safe mode.
- To go out from Service mode, simply turn the device off and on.

Step 2 — HIDDEN SERVICE/TEST MENU



- In the **HIDDEN SERVICE / TEST MENU** you can find information for your device like Firmware version, SIM lock status, Working bands, etc. Also you can test the various hardware components of your device.
- To enter into Hidden/Service menu, open the Dealer apps and enter this code:
- *****7378423*****

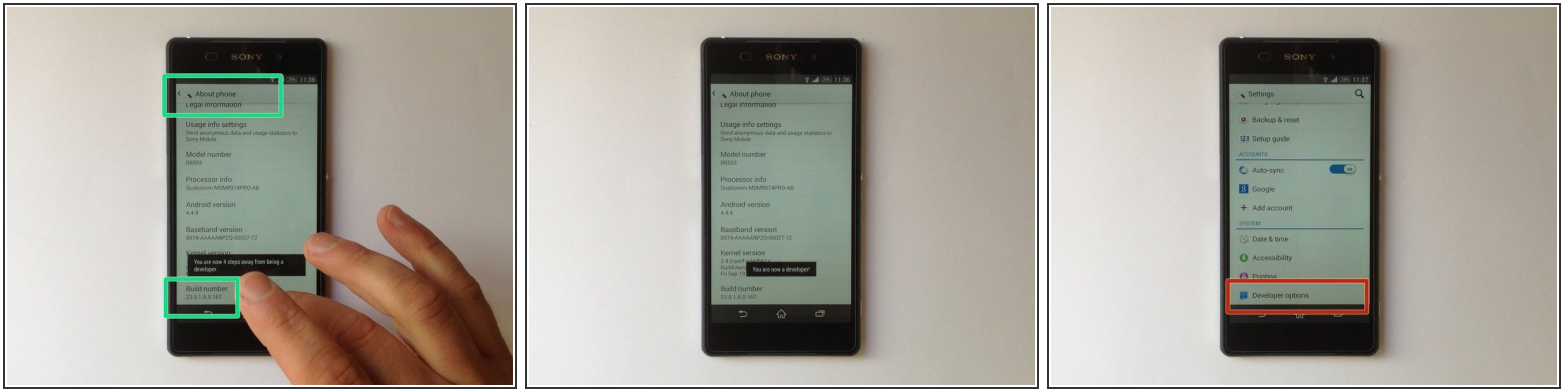
Step 3 — SOFT & HARD RESET



● SOFT & HARD RESET

- **SOFT RESET** - *Because, for this models you can't remove the battery, Sony provide you physically reset button. You can use it, if your device freeze. This will not affect your data and settings.*
- Open the SD card cover. Near to the SD card slot you can see a small red button. Use a tip of pen and press it. This will force the device to shut down.
- **HARD RESET** - *If your device crashes, freezes or if you have a problem with the Android OS, you can perform a Hardware reset. **This will delete all personal data and will set the device into factory settings!!!***
- Open Settings menu, then Backup & reset. Now choose Factory data reset.

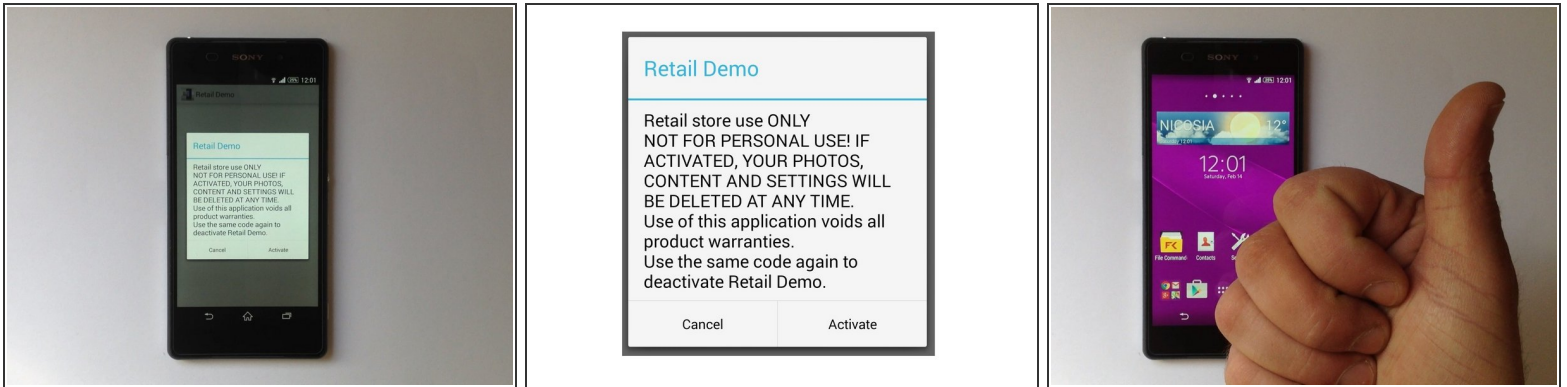
Step 4



● DEVELOPER OPTIONS MENU

- **Developer Options** have many features for app developer to test an app on their device from PC via ADB. From this menu you can activate USB Debugging mode. On more recent versions of Android, the developer options have been hidden.
- To enable Developer options, go to Settings - About phone. Navigate to the bottom and you should see Build Number. Now tab it 7 times and ... "You are now a developer." :)

Step 5 — RETAIL DEMO MODE



- *In **RETAIL DEMO** the phone start demo video and do this every time it goes to sleep mode. Older version of Android have a bug, that allowed to change the screen lock if the phone has Lock screen. For the newer version you can't enter "Retail mode" if the phone is screen locked.*
- To enter and go out this mode, from the Dealer app enter this code:
- *****73556673*****
- That's all.
- .
- .
- .
- **Did you do it successfully.**

To reassemble your device, follow these instructions in reverse order.