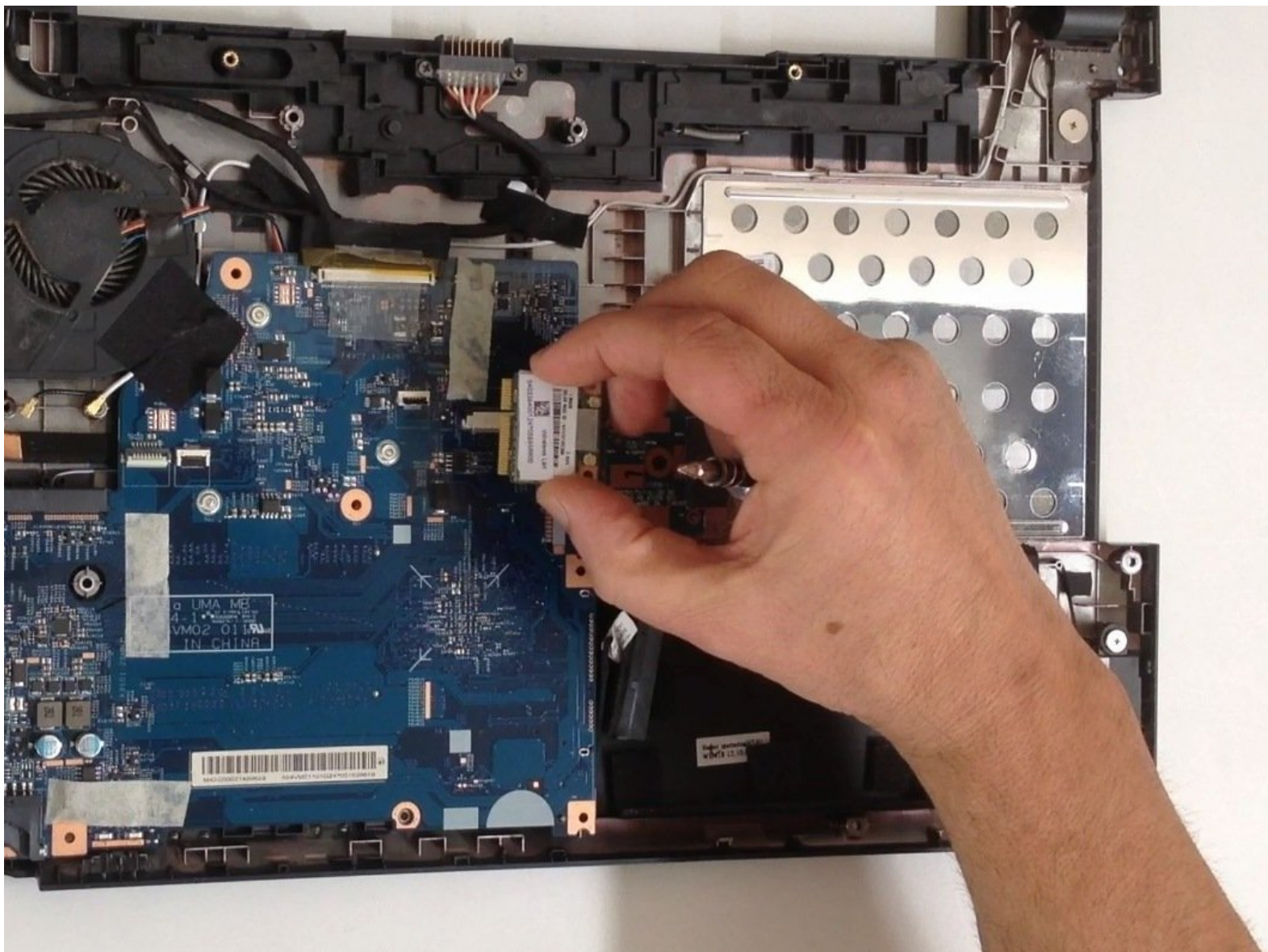




Acer Aspire V5-571 Wi-Fi Half Mini PCIe card Replacement

Acer Aspire V5-571 Wi-Fi Half Mini PCIe card Replacement

Written By: ZFix



INTRODUCTION

How to disassemble the laptop and replace the Wi-Fi (WLAN) Half Mini PCIe card.

—

[video: <http://youtu.be/mrKPisD7H0U>]

TOOLS:

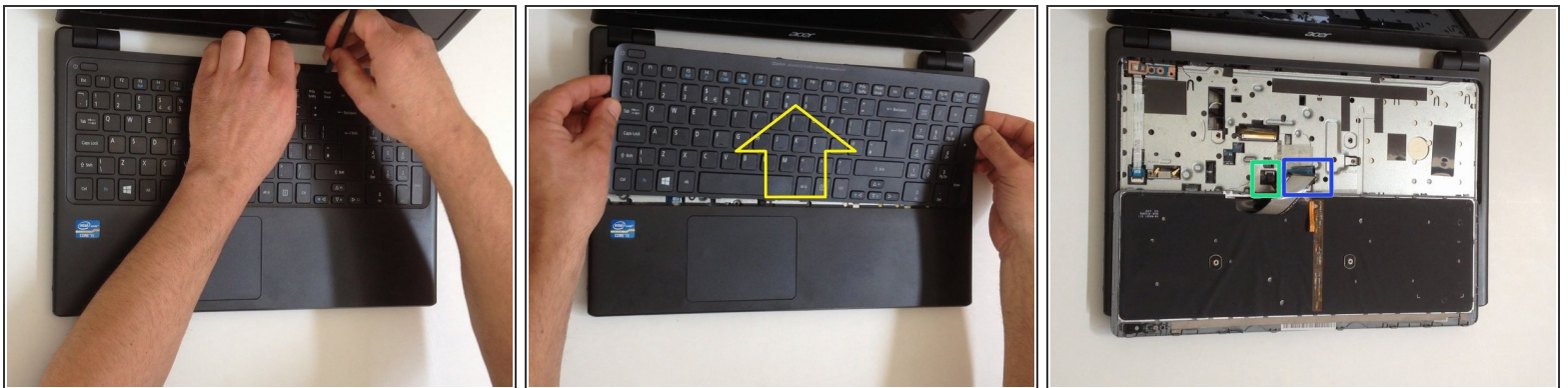
- [Phillips #0 Screwdriver](#) (1)
 - [iFixit Opening Tools](#) (1)
 - [iFixit Opening Picks set of 6](#) (1)
 - [Spudger](#) (1)
-

Step 1 — Keyboard



- Turn off the laptop and remove the battery.
- Remove two screws securing the Keyboard.
- The Keyboard is held by two locking clips, under the battery. Use the sharp tip of a plastic tool to release the keyboard.

Step 2

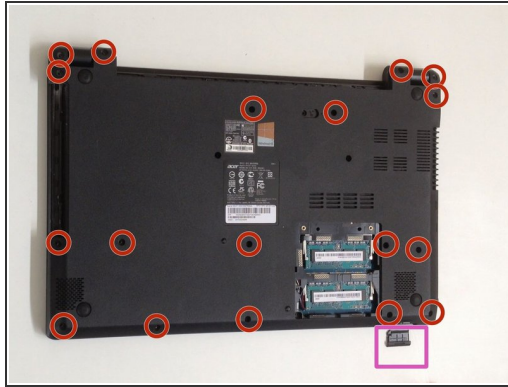
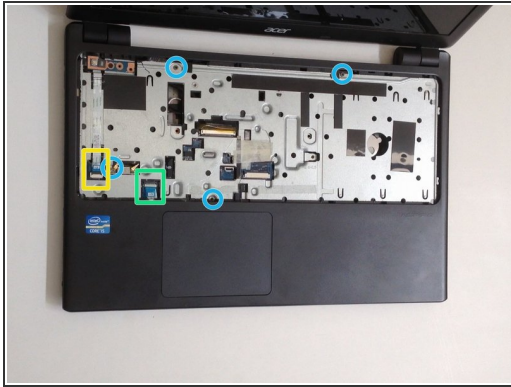


- Remove the Keyboard and disconnect the two flex cables:
 - Keyboard flex cable
 - Keyboard Light flex cable



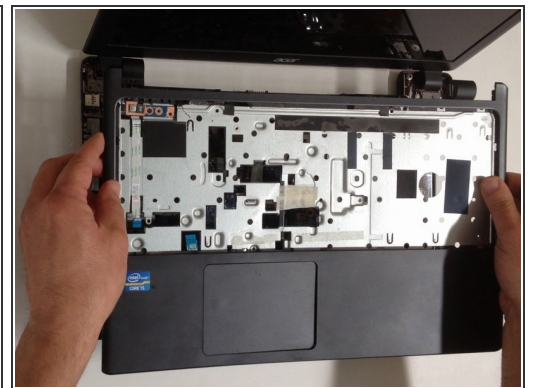
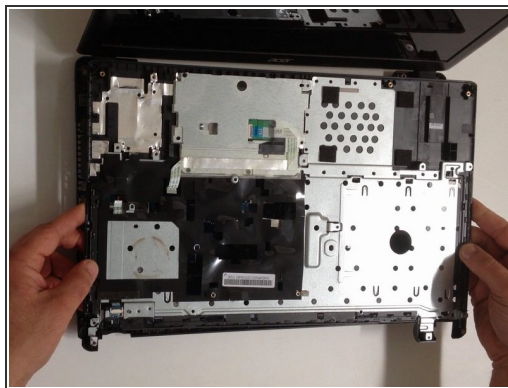
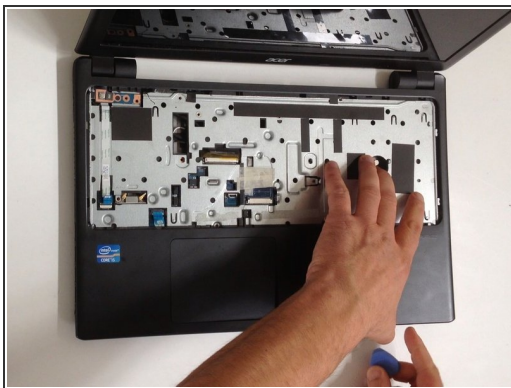
[Please SUBSCRIBE to my channel ツ](#)

Step 3 — Upper Cover



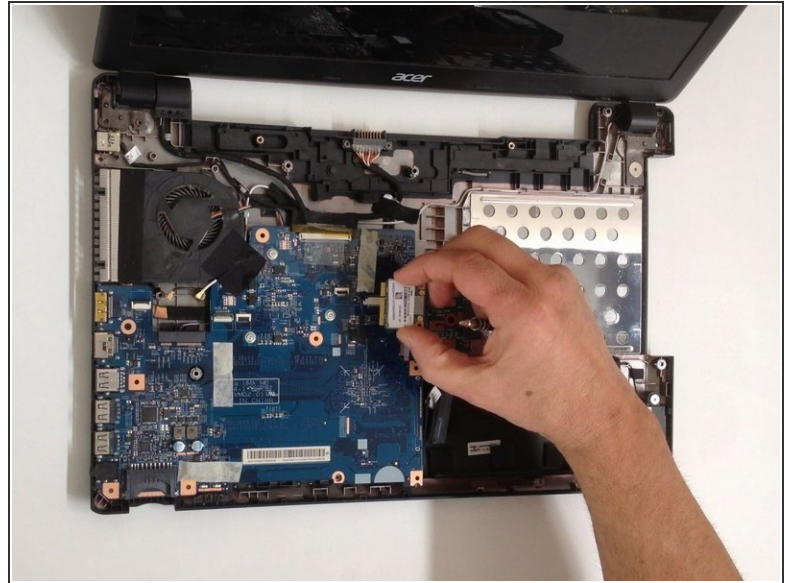
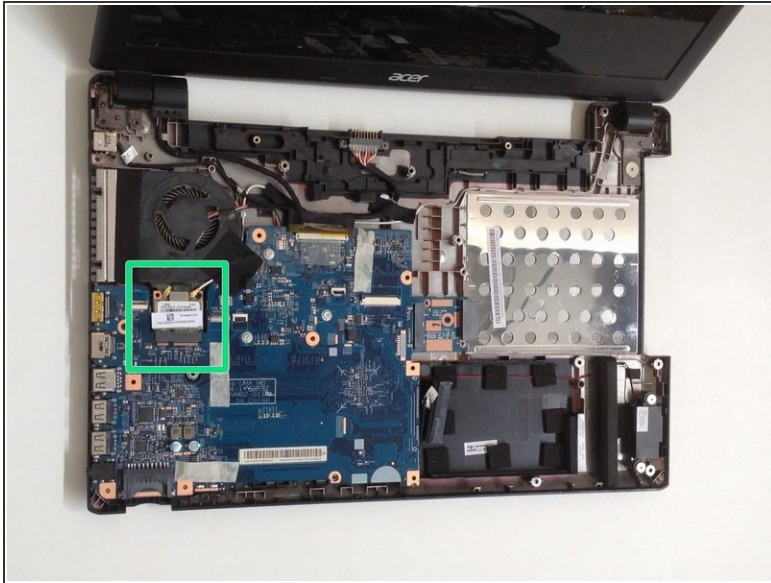
- Remove 4x phillips screws and disconnect:
- Power On button flex cable
- Touch pad flex cable
- Remove 18x Phillips screws from the bottom cover.
- Remove any memory SD Card from the Card reader.
- Start opening with a plastic opening tool.

Step 4



- Carefully separate the upper cover and remove it.

Step 5 — Wi-Fi Half Mini PCIe card



- Remove one Phillips screw, securing the WLAN card and disconnect the two coaxial antenna cables.
- Remove the Wi-Fi card.

To reassemble your device, follow these instructions in reverse order.