



Uniden D1688 multistation and handset disassembly

Guide on how to disassemble the Uniden D1688 phone along with one of the handsets.

Written By: Nicholas Weeks



INTRODUCTION

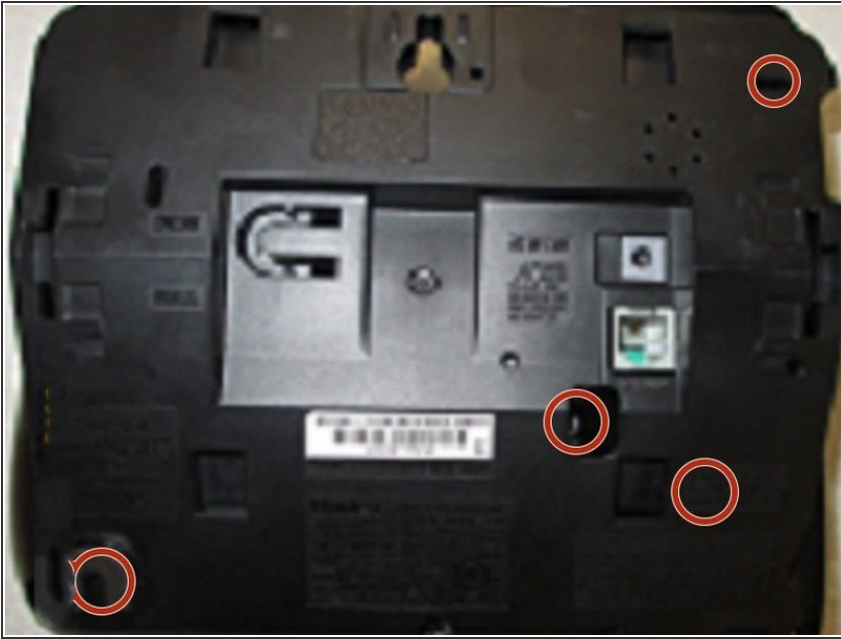
We will teach you how to successfully take apart the phone system to do any repairs and be able to fully put it back together.



TOOLS:

- [Phillips #1 Screwdriver](#) (1)
 - [Spudger](#) (1)
-

Step 1 — Uniden D1688 multistation and handset disassembly



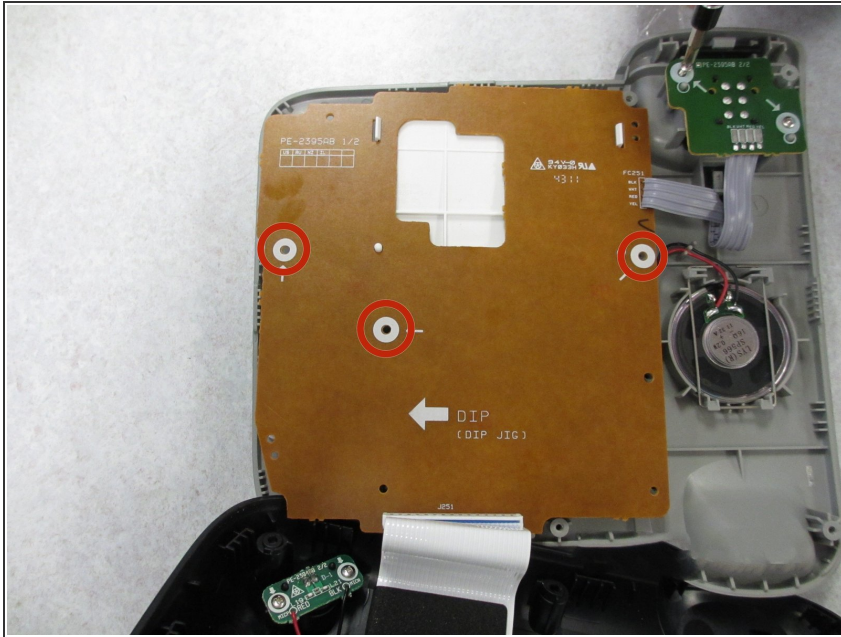
- Unplug the phone from the base by detaching the RJ-11 plug.
- Flip the base upside down, and use the Phillips #01 screwdriver to unscrew the seven screws (Head size: 5.11mm, length: 8.6mm) on the underside of the base.

Step 2



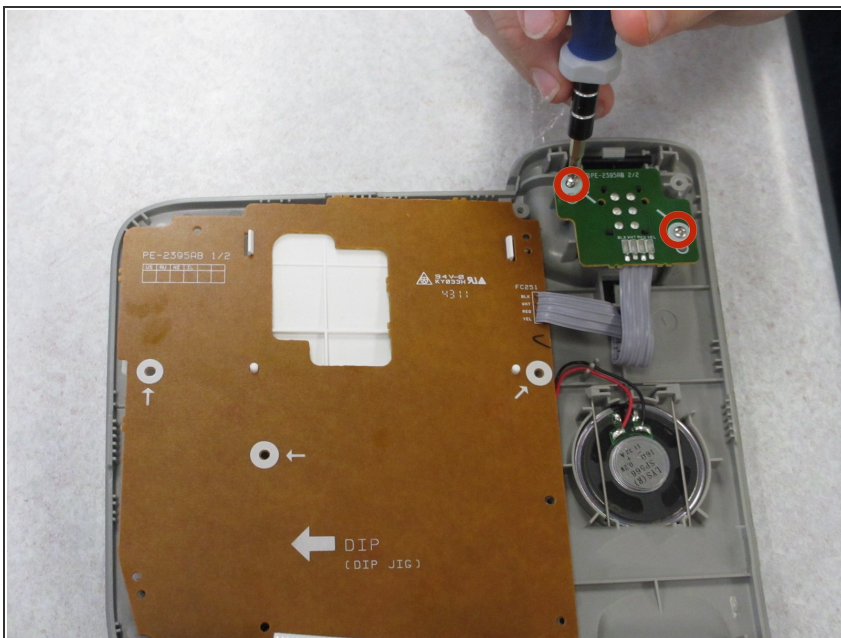
- Using the spudger, separate the top shell of the base from the bottom shell from the base.
- ⚠ Use care when separating the base so the ribbon cable between the top shell circuit board and the bottom shell circuit board is not damaged!

Step 3



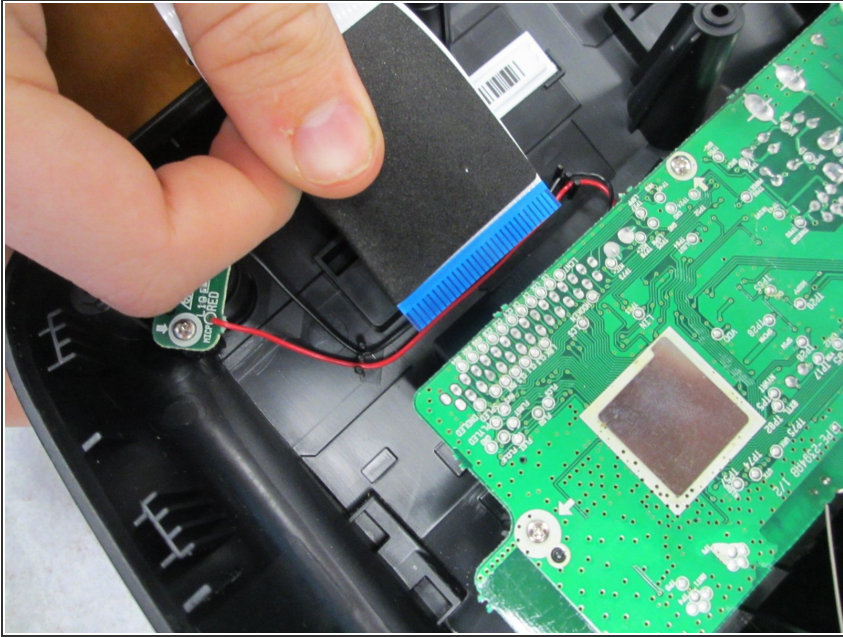
- Unscrew the 3 screws (Head Size: 4mm Length: 8.6 mm) from the top shell circuit board.

Step 4



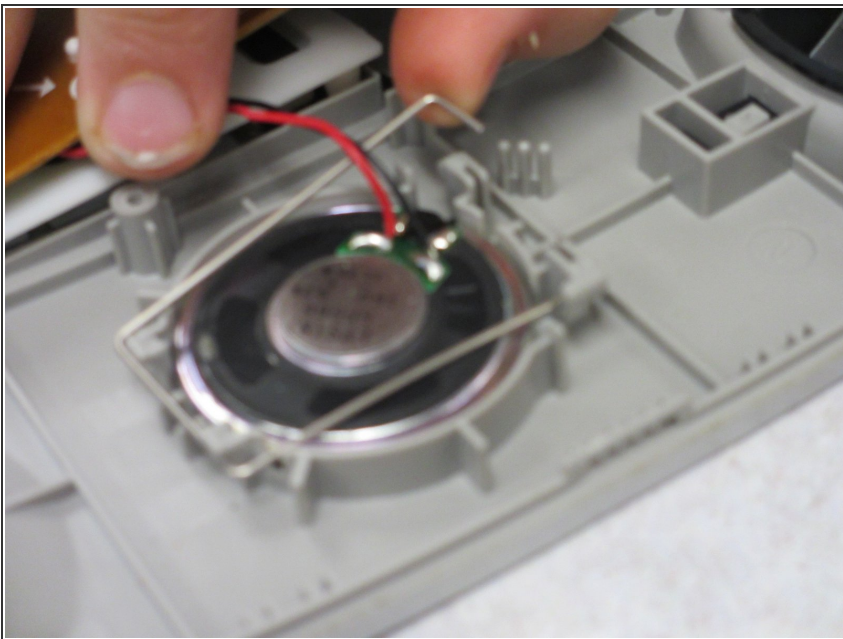
- Unscrew the 2 screws (Head Size: 4mm Length: 8.66) on the small circuit board in the top shell.

Step 5



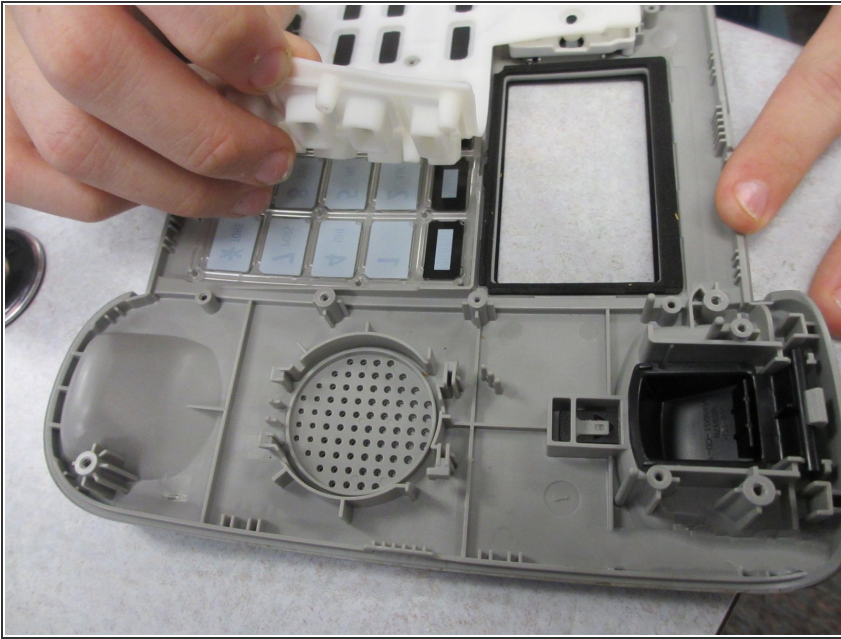
- Disconnect the ribbon cable from the bottom shell circuit board.

Step 6



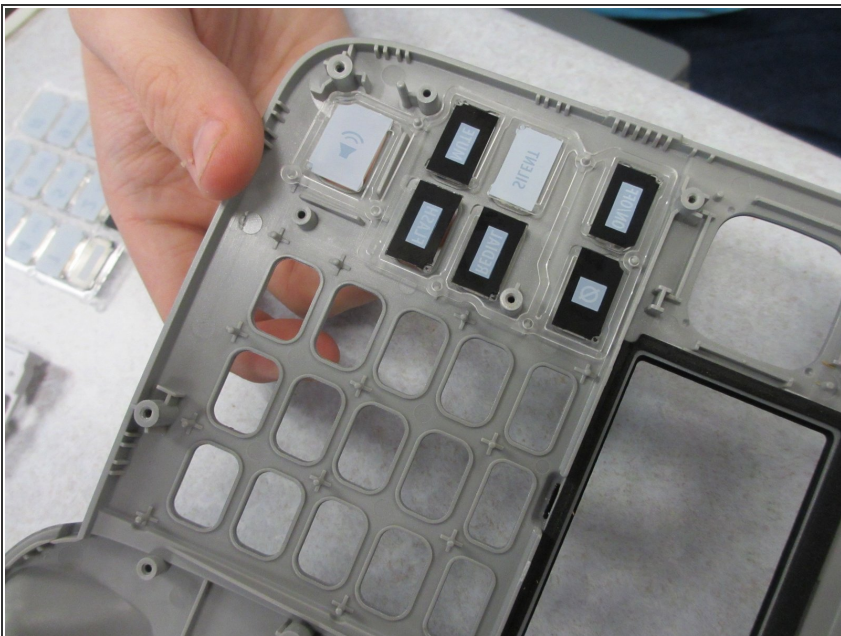
- Release the speaker from the locking pin by pushing down on each ending side of the pin and pushing it away from the speaker.

Step 7



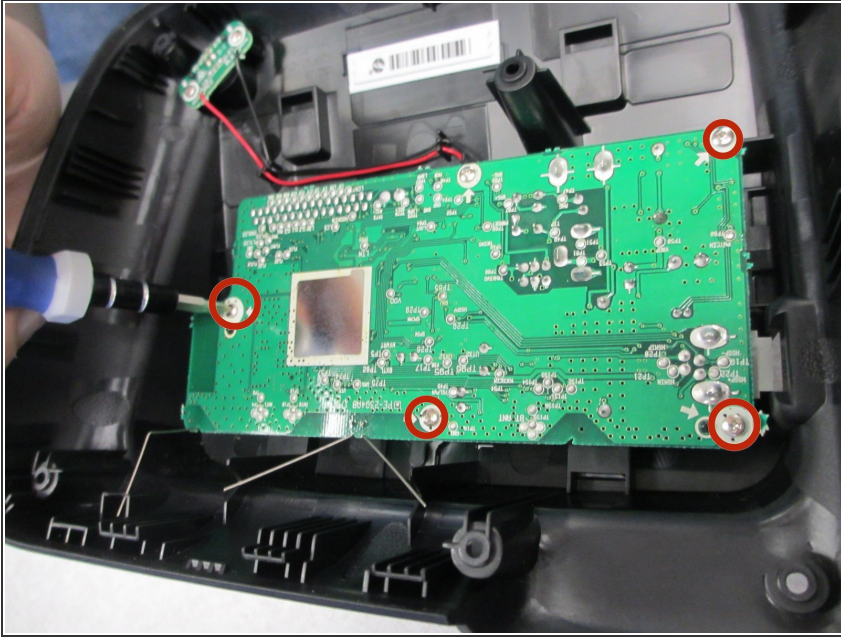
- Remove rubber keyboard underlay from top shell.

Step 8



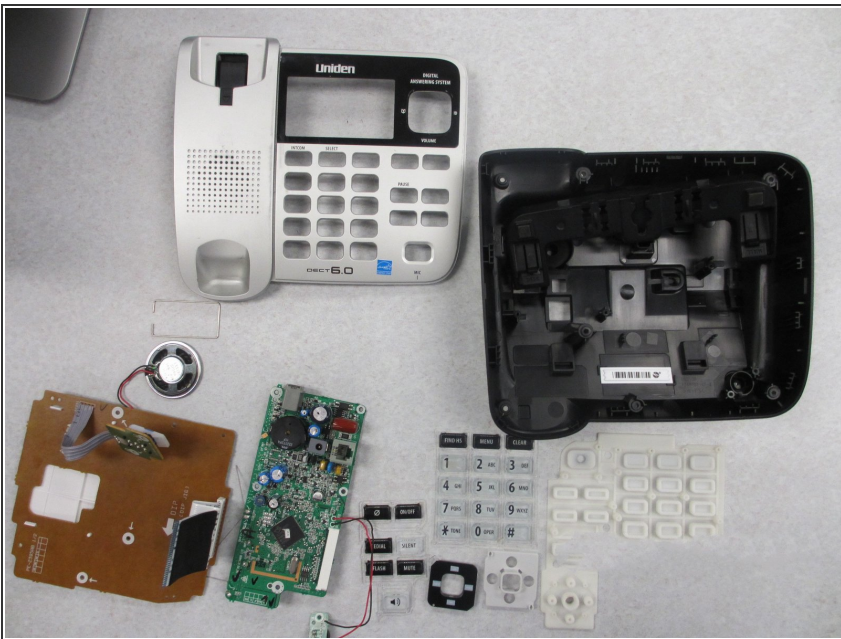
- Push the plastic keyboard pieces out of the top shell.

Step 9



- Unscrew bottom shell circuit board screws (Head size: 4mm Length: 8.6mm).

Step 10



- The disassembly of the phone base is complete!
- Now this guide will move on to taking apart one of the handsets.

Step 11



- Slide the battery cover off of the handset, and unplug the battery.

Step 12



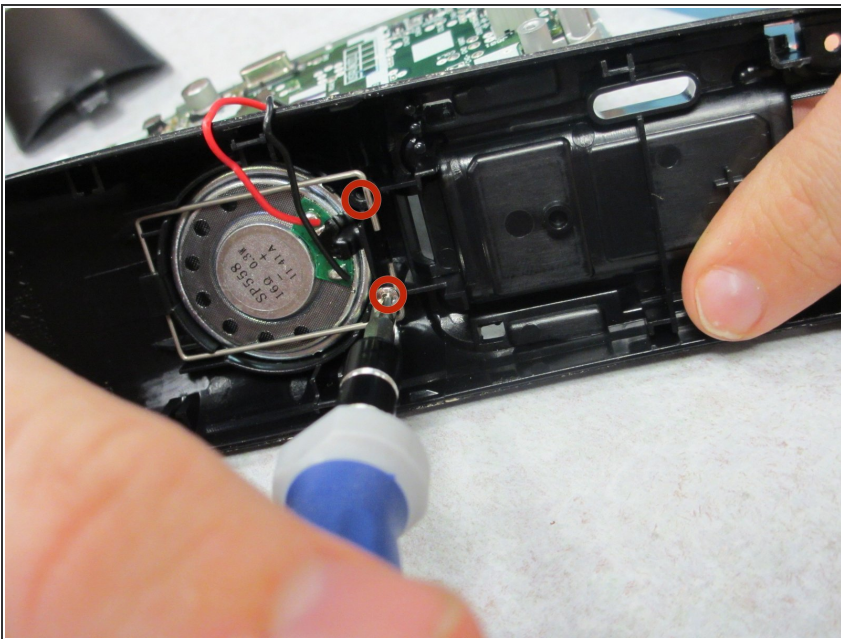
- Remove the battery, and unscrew the two screws (Head Size: 4mm Length: 8.6 mm).

Step 13



- Use spudger to separate the phone shell.

Step 14



- Unscrew the two screws (Head Size: 4mm Length: 8.6mm) on the bottom shell keeping the speaker locking pin in place.

To reassemble your device, follow these instructions in reverse order.