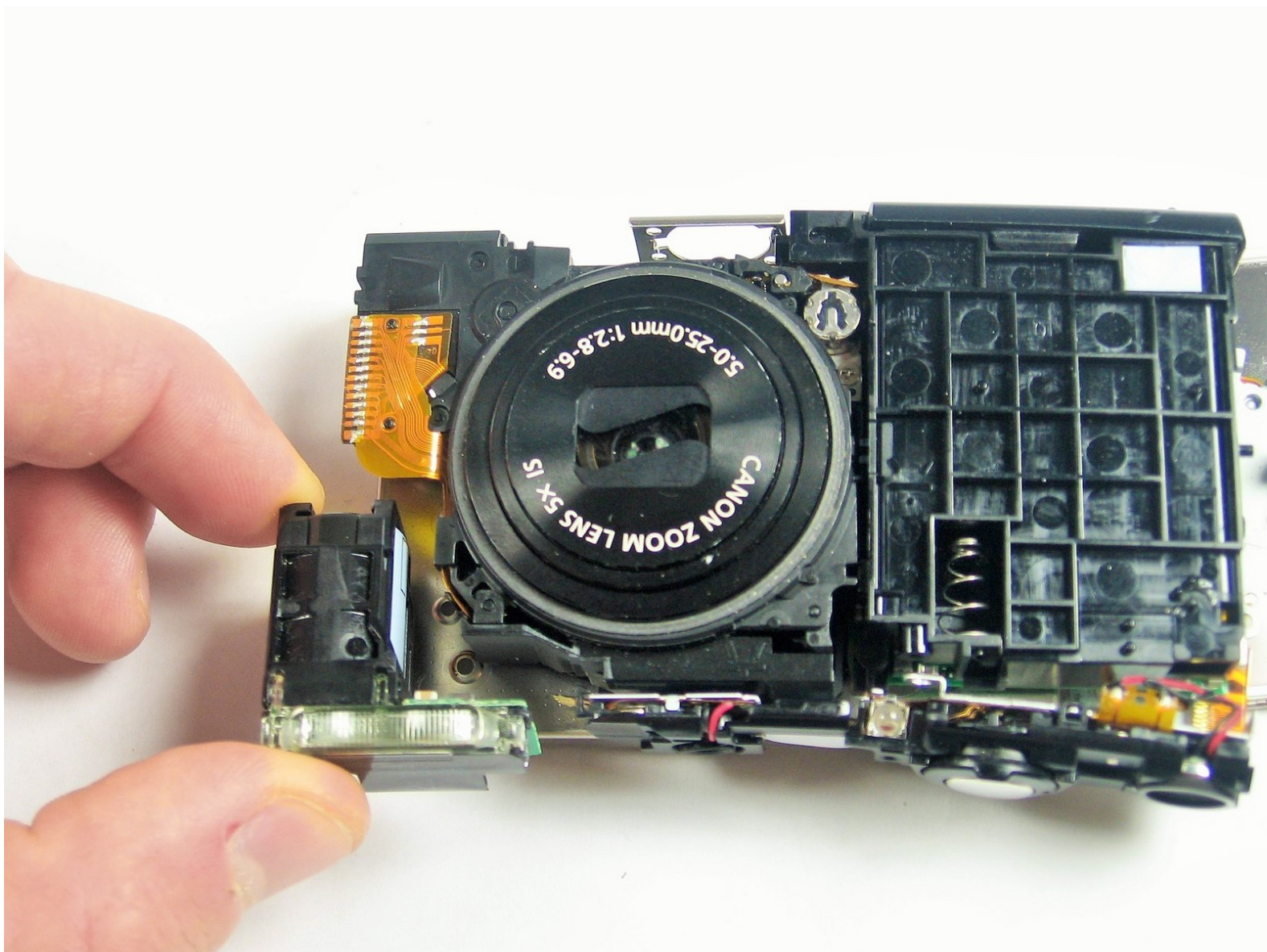




# Canon PowerShot A3400 IS Flash Assembly Replacement

Written By: Emily Pretorius



## INTRODUCTION

The following steps will help you replace the flash assembly for the Canon PowerShot A3400 model. You would want to do this if the camera's flash is no longer functioning and you have exhausted your troubleshooting to the point where the source of the issue lies with the flash assembly.



### TOOLS:

- [Phillips #000 Screwdriver](#) (1)
  - [Spudger](#) (1)
-

## Step 1 — Battery



- Place thumb on area right next to where it says open and slide to the right to open.

## Step 2



- Remove the battery by pushing the orange object outwards; the battery will spring up and out.



### Step 3 — Plastic Case



- Remove the two 5.00 mm screws in the bottom of the casing with a Philips #000 screwdriver

### Step 4



- Place the camera on to the side that has the image stabilizer label.
- Remove the 5.00 mm screws that are on this side using the screwdriver.

## Step 5



- Place camera on to the side with the A/V Out Digital Cover facing up.
- Remove this visible 5.00 mm screw.
- Pull the A/V Out Digital cover back to uncover the next step.

## Step 6



- Remove the 5.00 mm screw from behind the cover.

## Step 7



- Make sure the battery cover is open.

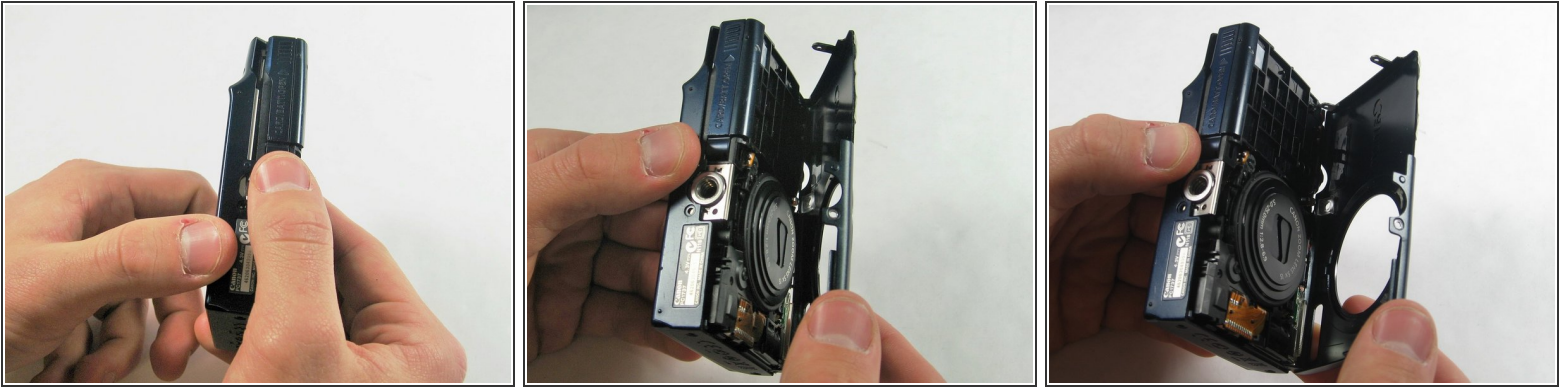
## Step 8



- Turn the camera onto the side with the A/V out Digital cover.
- Use your finger to pull this tab to the right.

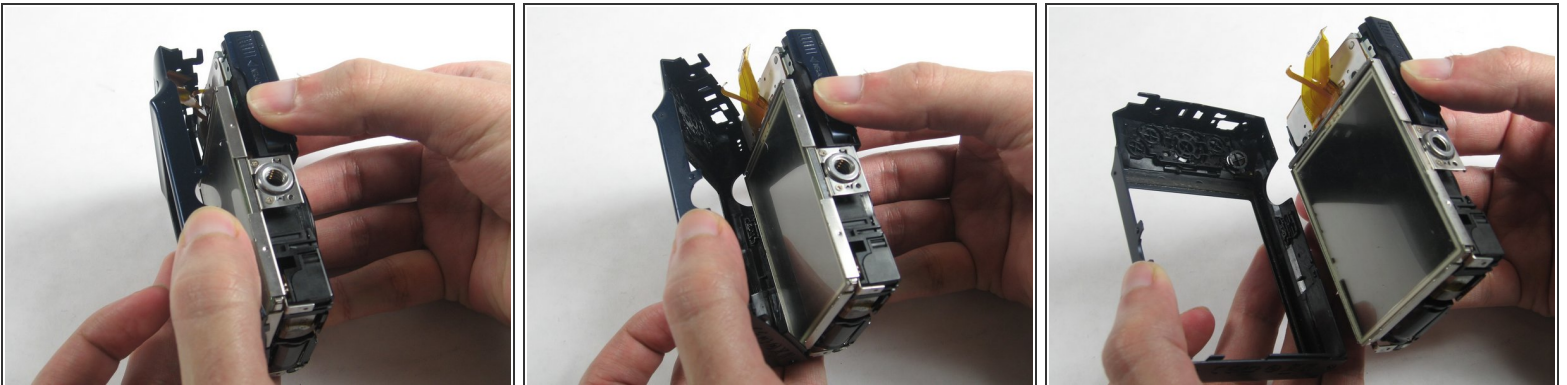


## Step 9



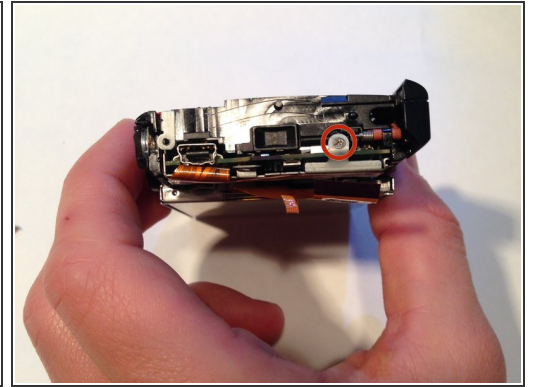
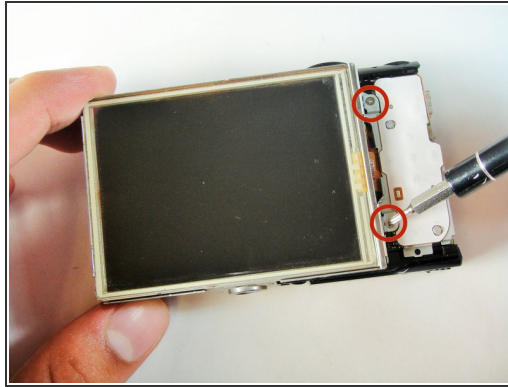
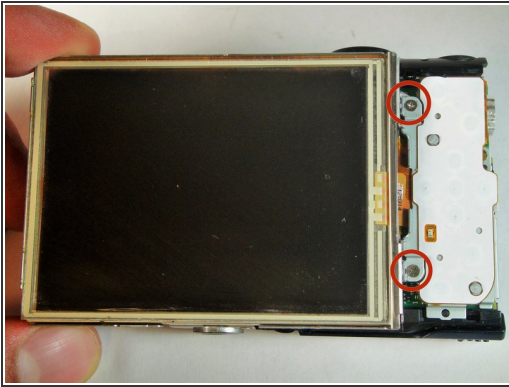
- Remove the lens side by using your fingers or a spudger to pry it gently open.
- ⓘ Try to pry it loose all around that side so that it is easier to pull off.

## Step 10



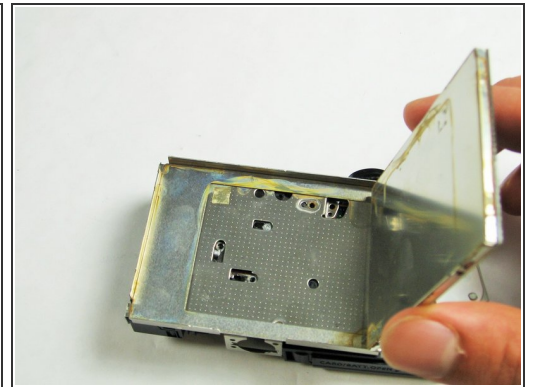
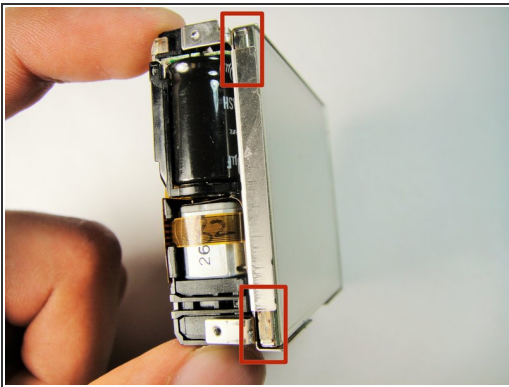
- Using your fingers, pull the screen side gently off.
- ⓘ Try to loosen it all around that side so that it is easier to try and pull it off.

## Step 11 — Flash



- Remove the three 5 mm screws

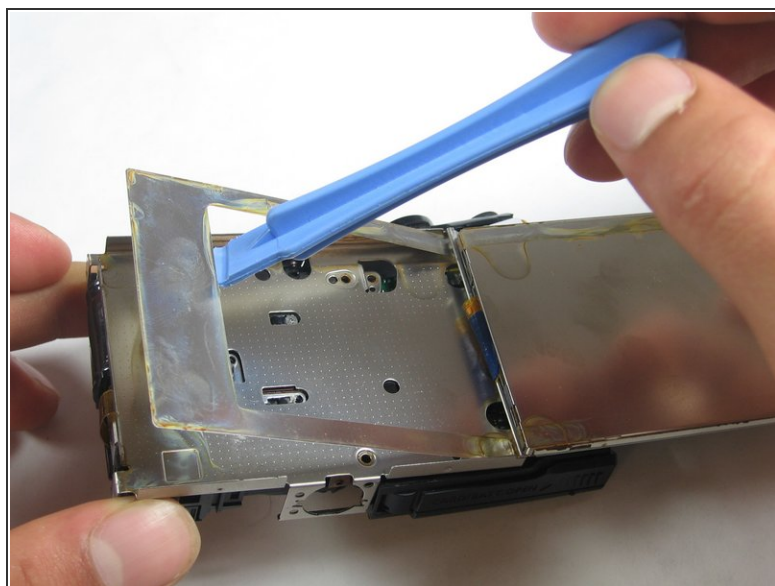
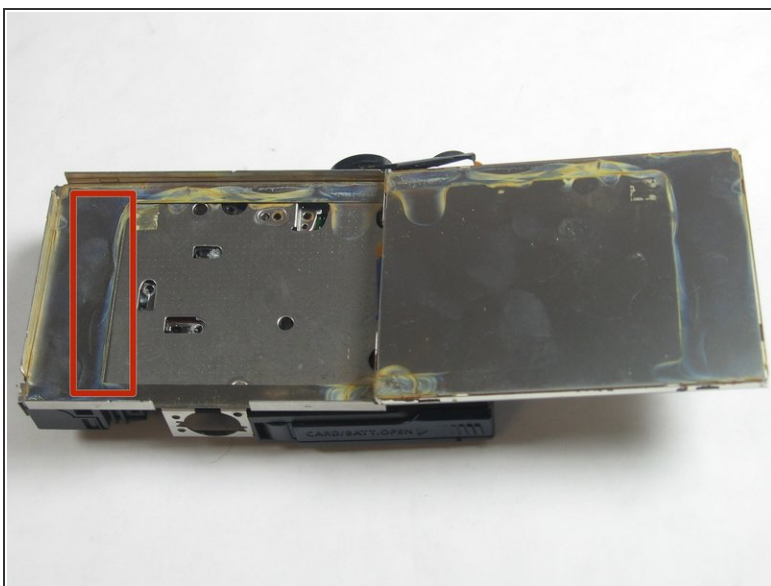
## Step 12



- Remove the screen by pulling at the two points as shown.

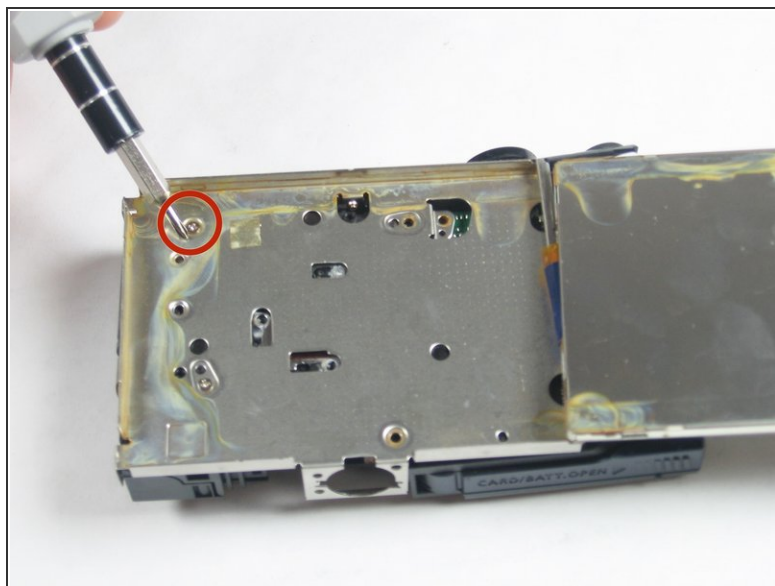
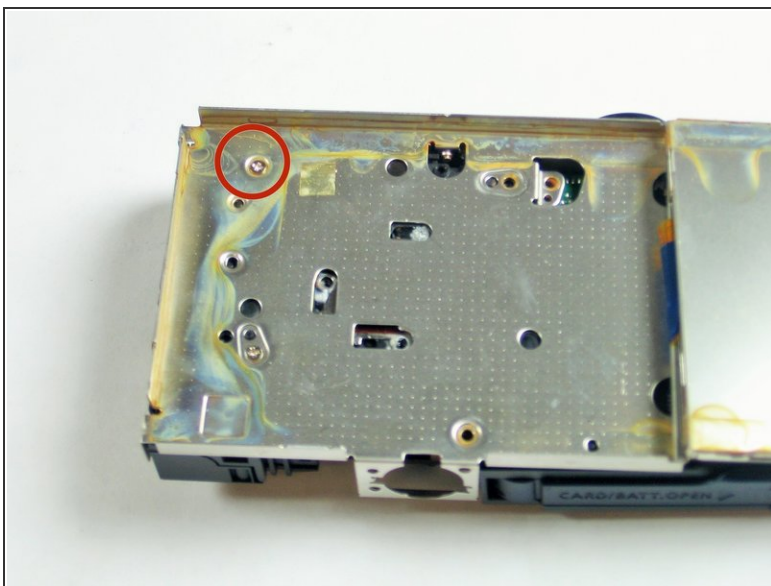


## Step 13



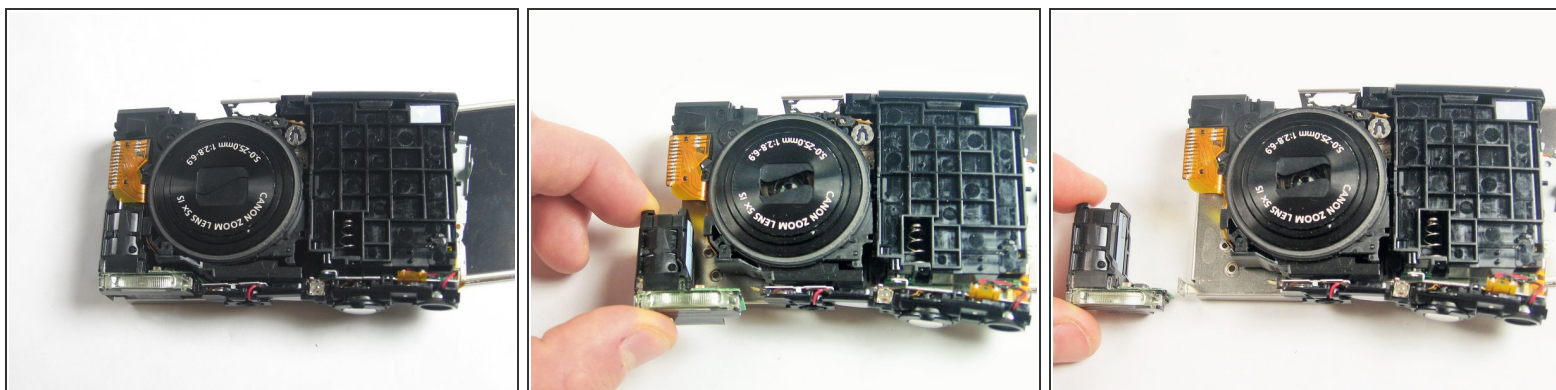
- Remove the metal plate with the plastic opening tool.

## Step 14



- Remove the 5 mm screw

## Step 15



- Gently pull the flash assembly away.

To reassemble your device, follow these instructions in reverse order.