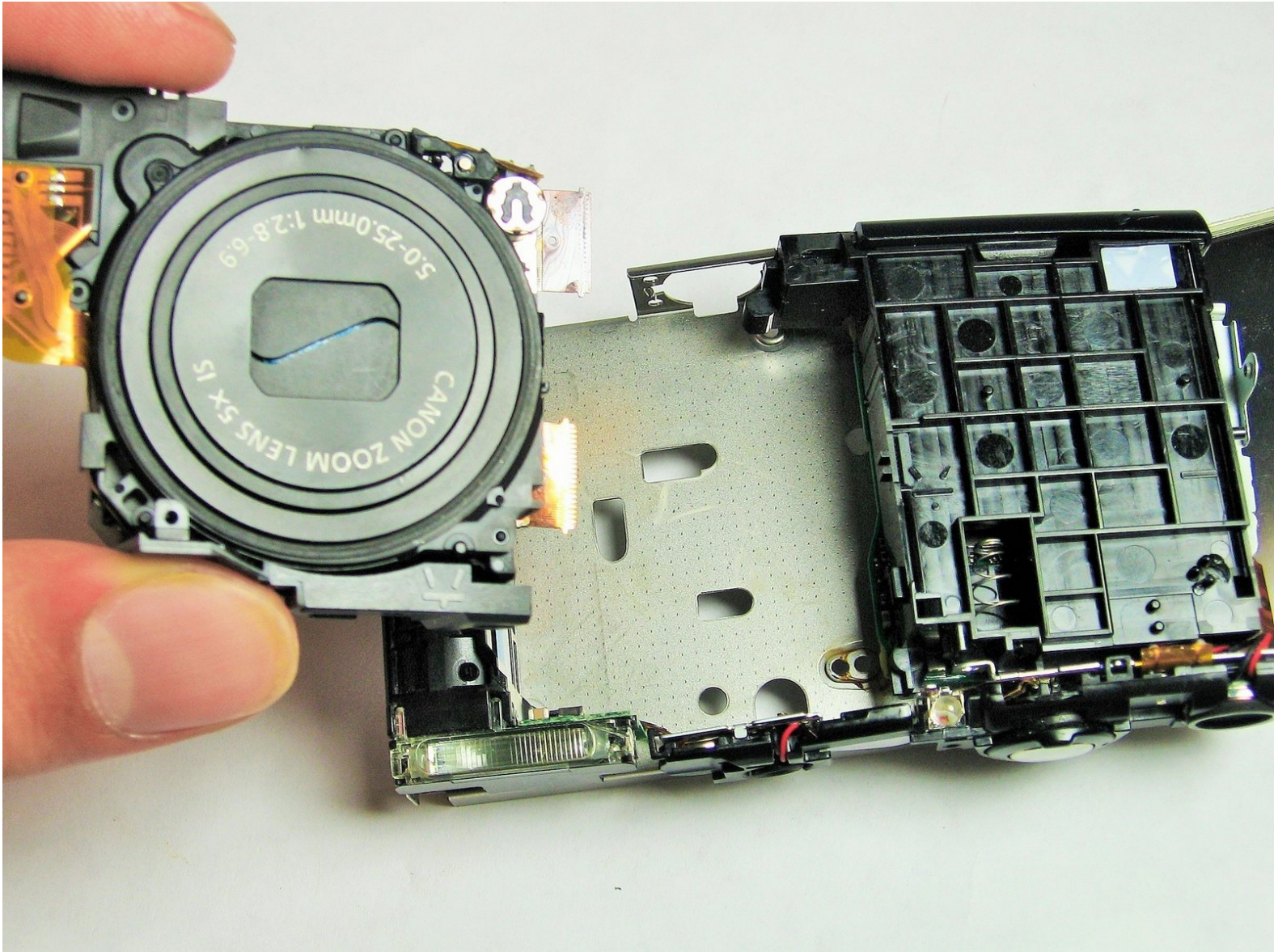




# Canon PowerShot A3400 IS Lens Replacement

Written By: tariq



## INTRODUCTION

Replacement of the lens usually needs to take place when the lens no longer retracts or when the lens has been damaged due to scratches or cracks. This scenario is usually accompanied by the common E18 error showing up on the LCD display.



### TOOLS:

- [Phillips #000 Screwdriver](#) (1)
  - [Spudger](#) (1)
-

## Step 1 — Battery



- Place thumb on area right next to where it says open and slide to the right to open.

## Step 2



- Remove the battery by pushing the orange object outwards; the battery will spring up and out.



### Step 3 — Plastic Case



- Remove the two 5.00 mm screws in the bottom of the casing with a Philips #000 screwdriver

### Step 4



- Place the camera on to the side that has the image stabilizer label.
- Remove the 5.00 mm screws that are on this side using the screwdriver.

## Step 5



- Place camera on to the side with the A/V Out Digital Cover facing up.
- Remove this visible 5.00 mm screw.
- Pull the A/V Out Digital cover back to uncover the next step.

## Step 6



- Remove the 5.00 mm screw from behind the cover.

## Step 7



- Make sure the battery cover is open.

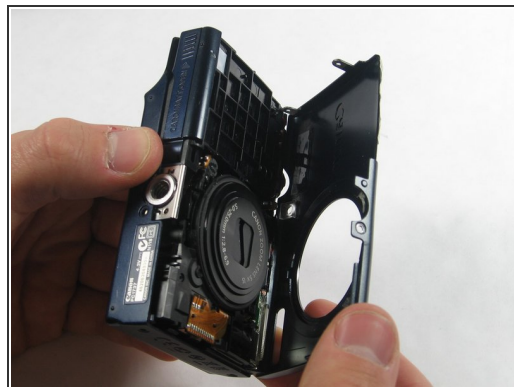
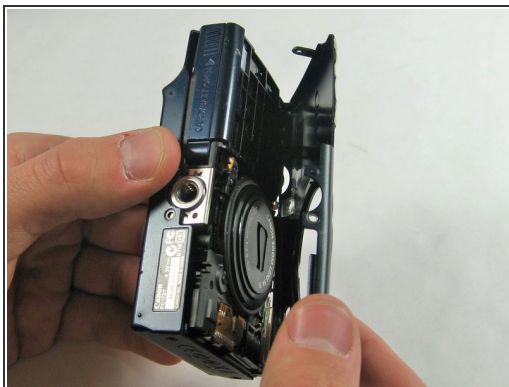
## Step 8



- Turn the camera onto the side with the A/V out Digital cover.
- Use your finger to pull this tab to the right.

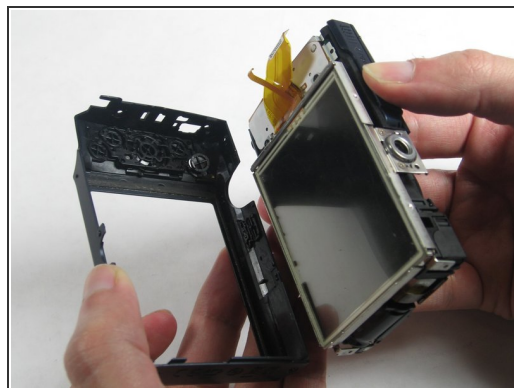
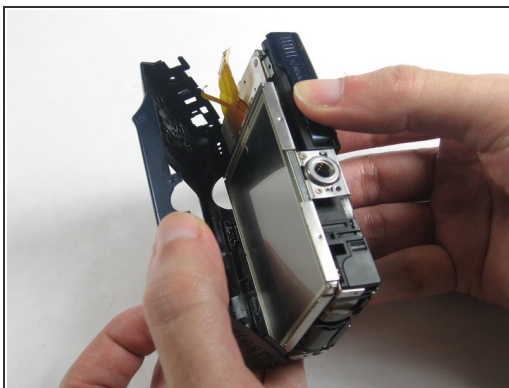
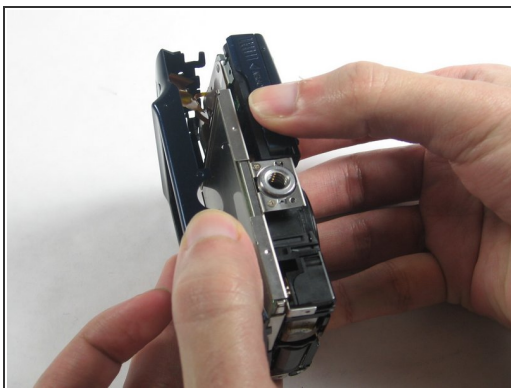


## Step 9



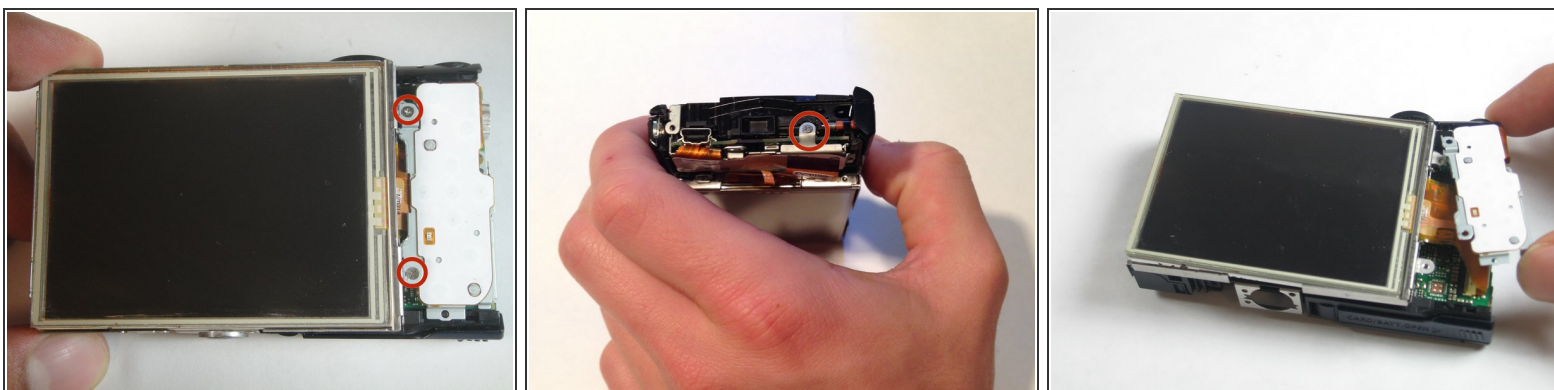
- Remove the lens side by using your fingers or a spudger to pry it gently open.
- ⓘ Try to pry it loose all around that side so that it is easier to pull off.

## Step 10



- Using your fingers, pull the screen side gently off.
- ⓘ Try to loosen it all around that side so that it is easier to try and pull it off.

## Step 11 — Lens



- Remove the three 5 mm screws

## Step 12

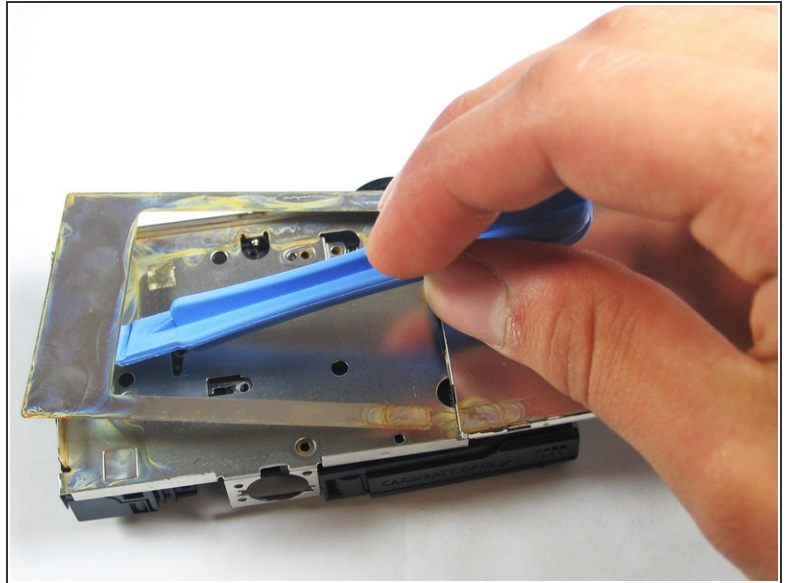
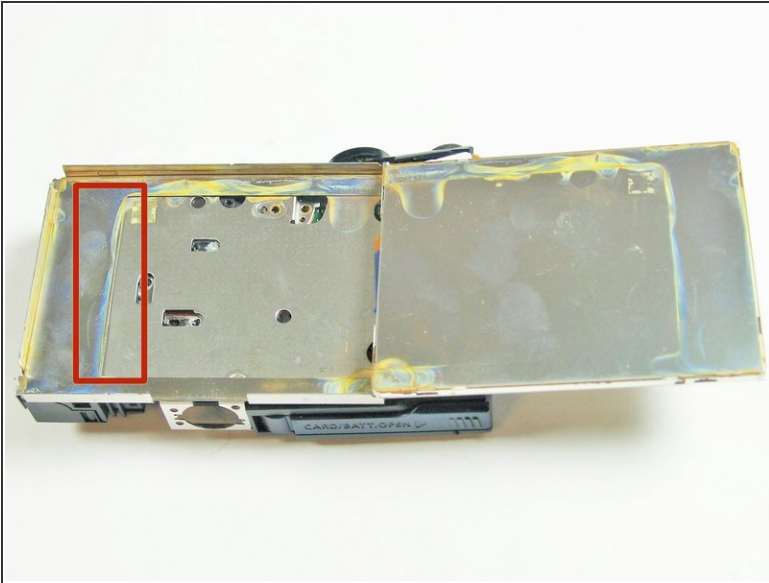


- Pull the screen away from the main components.

⚠ Do not pull hard as there are some ribbons still attached to the motherboard that could be damaged if you use too much force.

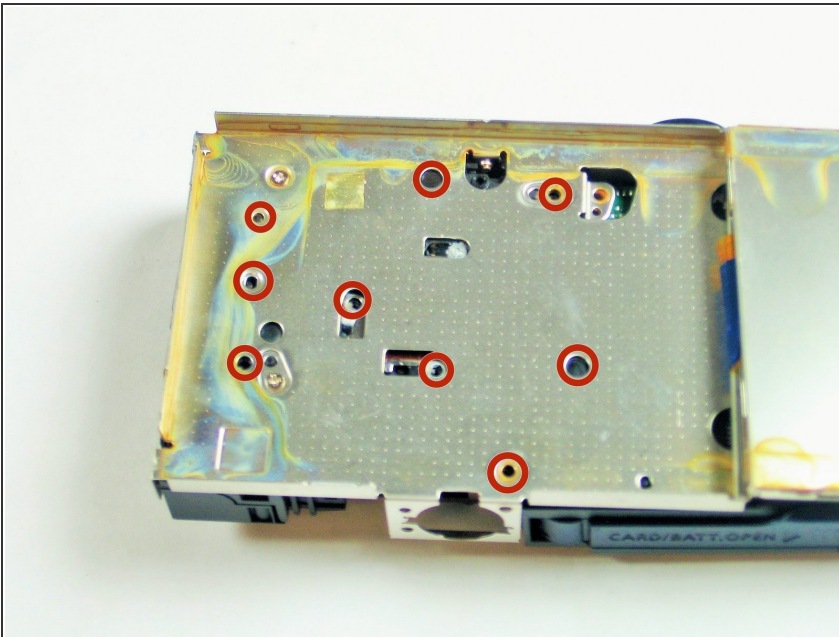


## Step 13



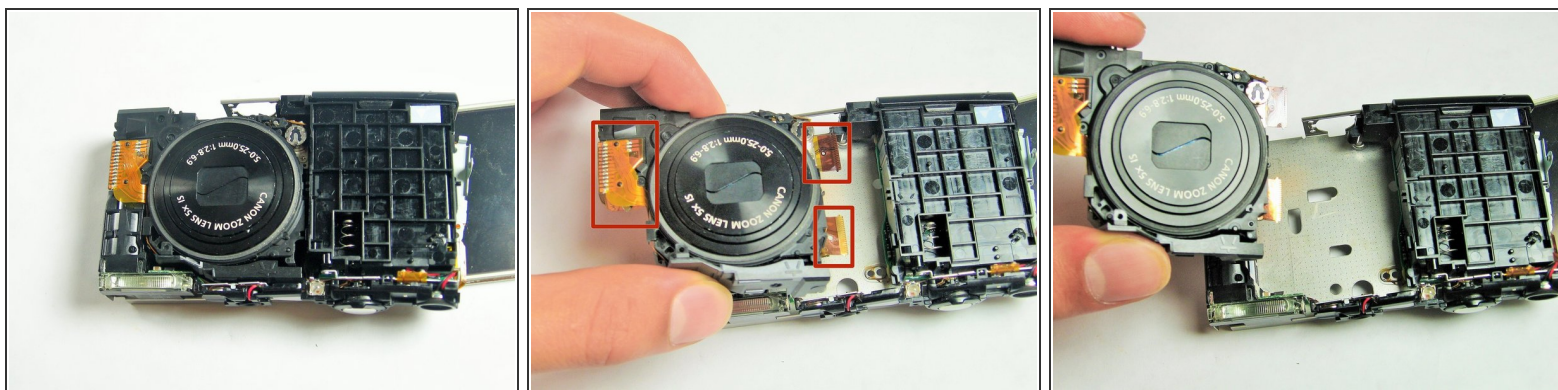
- Lift the metal plate with the plastic opening tool.

## Step 14



- Remove all of these 5 mm screws

## Step 15



- Gently remove the lens component.

⚠ The orange flex cables are connected to [ZIF connectors](#). Be sure to disconnect and reconnect them properly by first unlocking the retaining flap on each connector.

To reassemble your device, follow these instructions in reverse order.