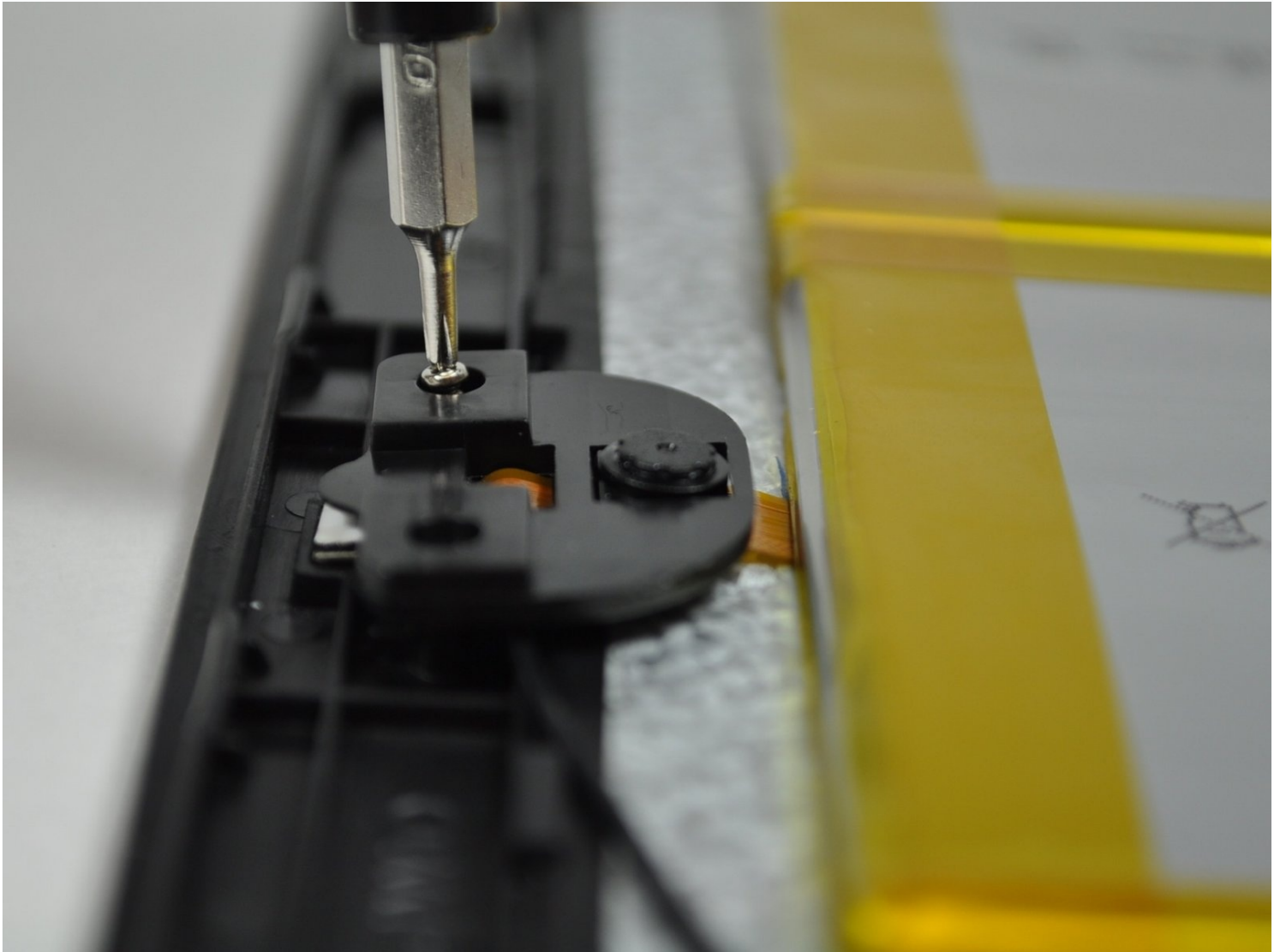




# Polaroid A10 Front/Back Camera Replacement

This Polaroid A10 Front/Back Camera Replacement...

Written By: Shilpa Verma



# INTRODUCTION

This Polaroid A10 Front/Back Camera Replacement guide might be needed if either your front, back, or both camera lenses are damaged, shattered, and/or scratched. If only one of your camera lenses are damaged, you will be replacing both front and back cameras because they are both contained in a single component. To acquire further information regarding the Polaroid A10 front/back camera replacement, follow this efficient guide to escort you through the replacement procedures.

---

## TOOLS:

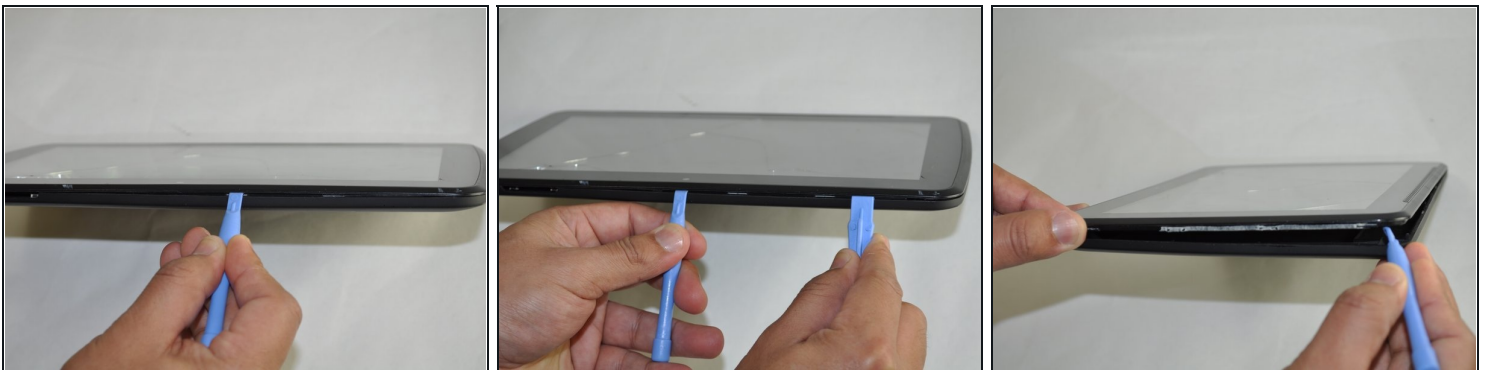
[iFixit Opening Tool](#) (1)

[Heavy-Duty Spudger](#) (1)

[Phillips #000 Screwdriver](#) (1)

---

## Step 1 — Back Cover

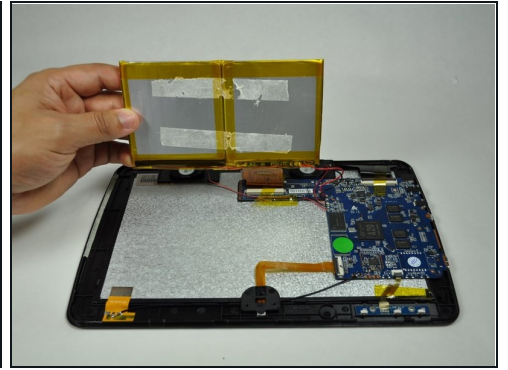
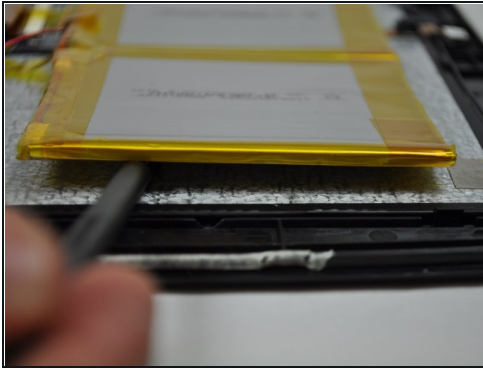


- Begin by having the side with volume and power button face up towards you.
- Insert a plastic opening tool between the display and the back cover.
- Once you have one plastic opening tool in, you can insert another one. While holding one in place, slide the other along the gap to release the tabs.

 It is easier to remove the back cover, if the display screen is faced down.

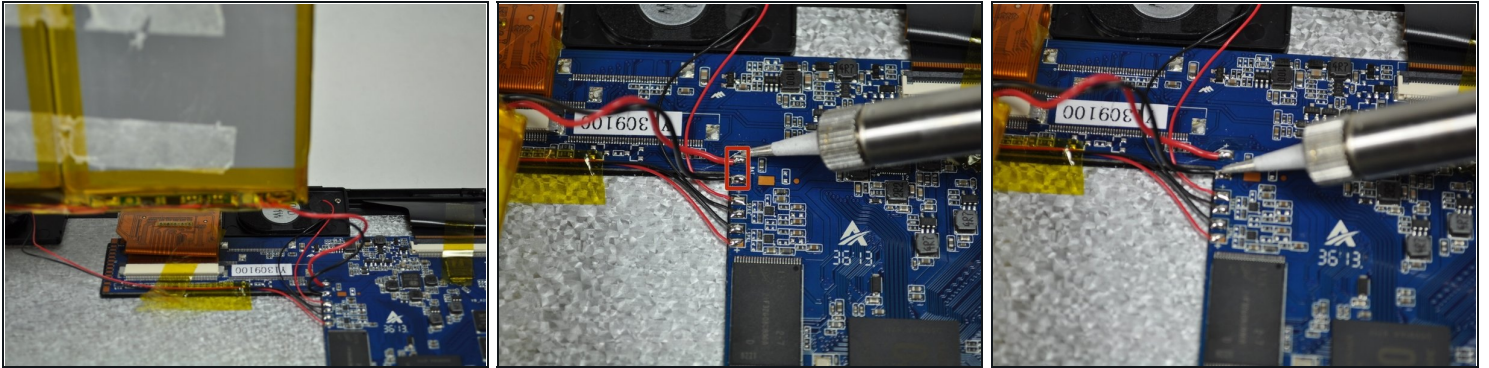
 The tabs must be released from all four sides before removing the back cover.

## Step 2 — Battery



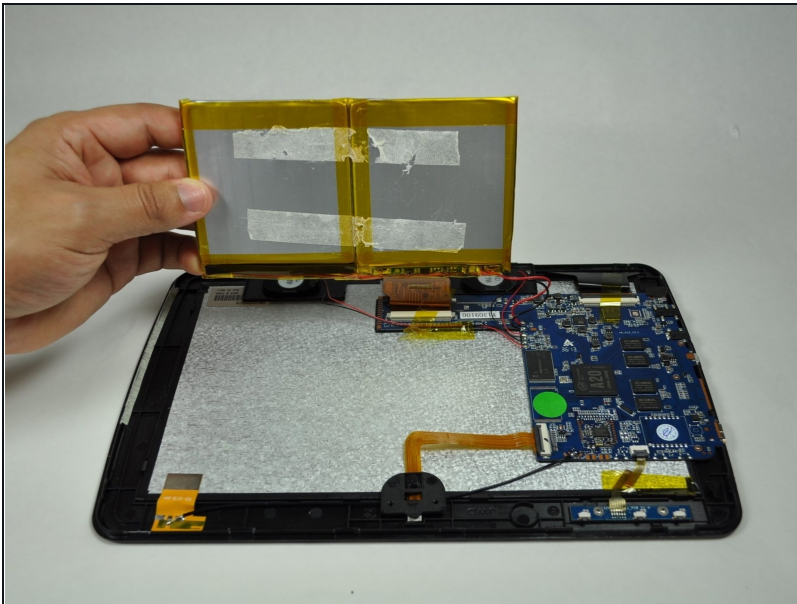
- Begin by inserting the flat end of a spudger underneath the battery to separate the glue from the battery.
- ① It is better to use a [plastic card](#) if you have one.
- Gently lift up the battery as you continue to separate the glue from the battery.
- ① Lift up just enough to see where the glue is, so that you don't bend the battery.
- Once the glue has been separated, gently lift up the battery and you will notice two wires attached to the motherboard.

### Step 3



- Follow the (Black and Red) wires from the battery to the motherboard.
- The two wires (Black and Red) must be removed from the motherboard, as they are connected to the battery.
- ① Removal and installation of wires requires soldering. [Here's a helpful link to assist you with great soldering techniques.](#)

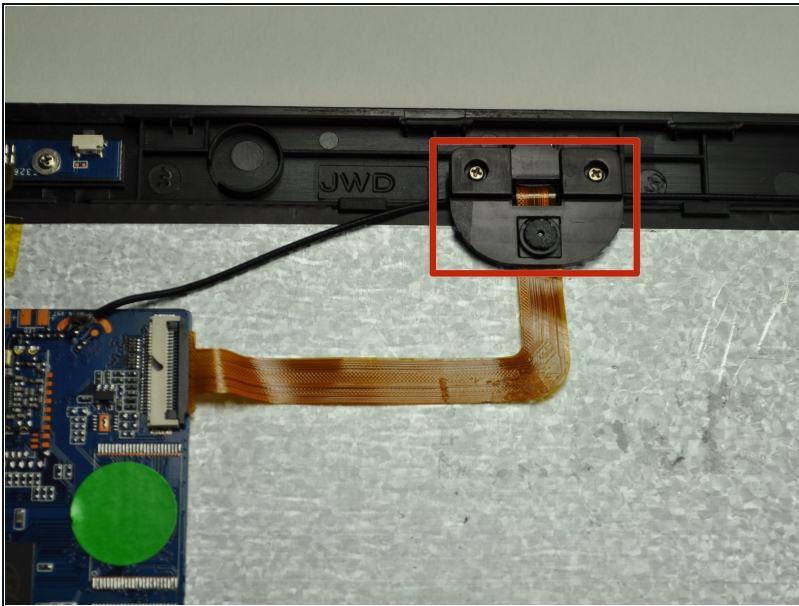
### Step 4



- Gently lift the battery up and out of the device.

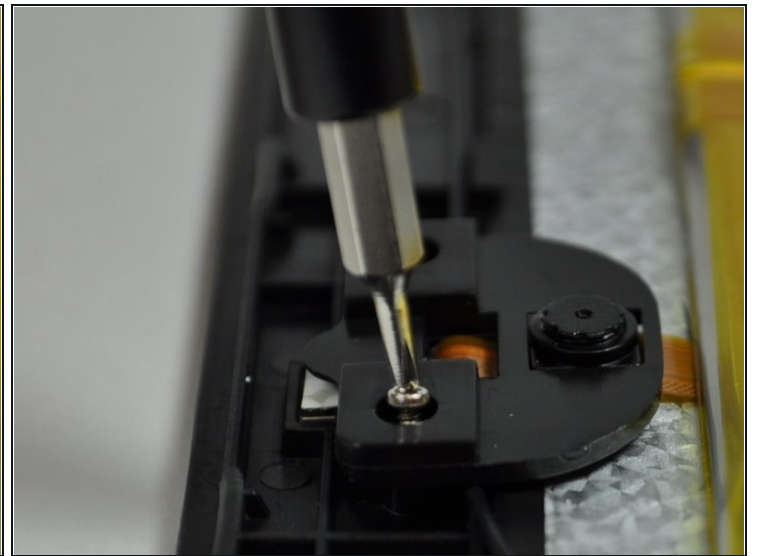
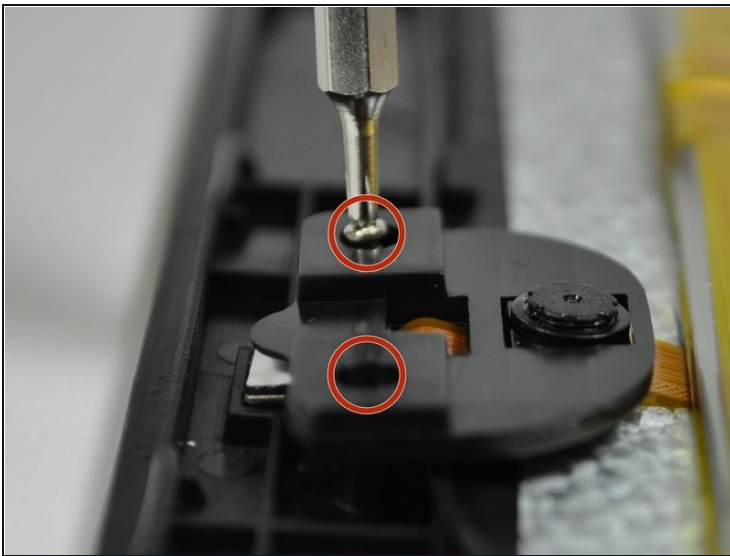


## Step 5 — Front/Back Camera



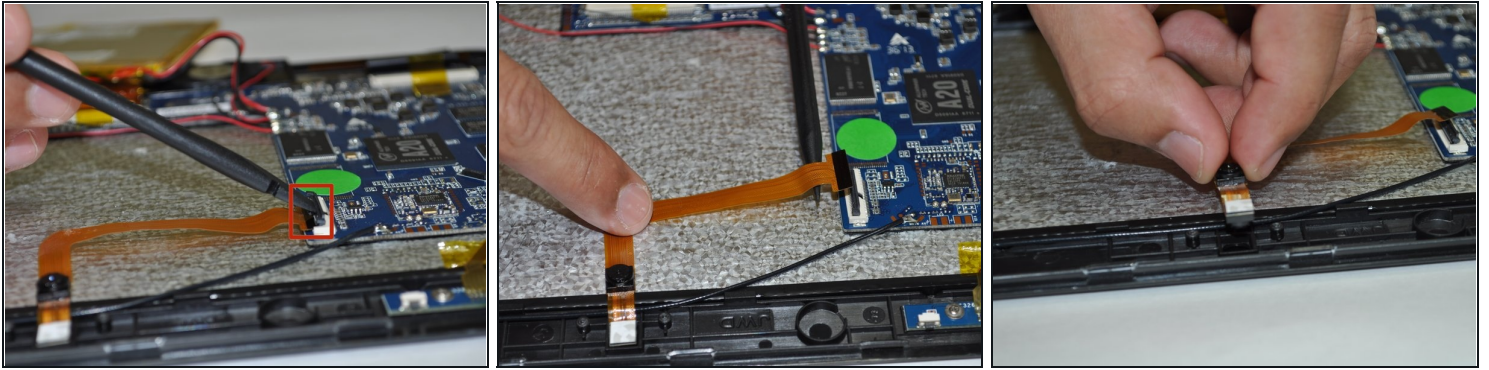
- The camera head is located on the upper middle section of the device, close to the battery.

## Step 6



- Start by locating the two left and right screws which hold the camera head in place.
- Using the Phillip's 000 screwdriver, remove the two 7 mm screws located in the picture by rotating the screw counter-clockwise.

## Step 7



- Locate the camera ribbon cable that is connected to the motherboard.
- With a spudger, remove the camera ribbon cable base from the motherboard connector.
- With one finger, delicately remove the camera ribbon cable by sliding down.

---

To reassemble your device, follow these instructions in reverse order.