

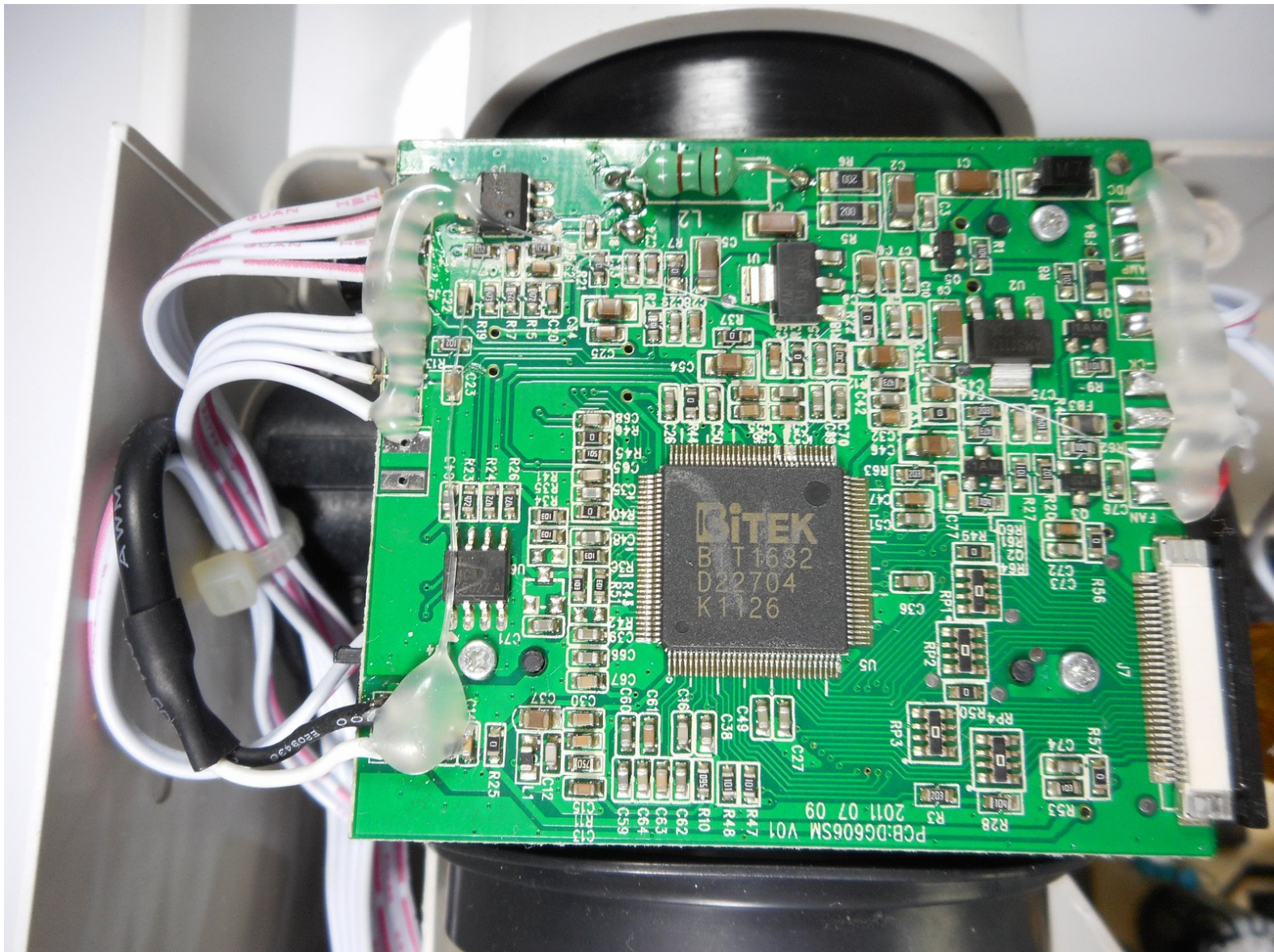


Merch Source Projector Entertainment II

Motherboard

Is your projector not responding? It could be your motherboard!

Written By: Michael Tan



INTRODUCTION

Follow this guide to repair components on the logic board. All you will need a solder gun and steady hands.



TOOLS:

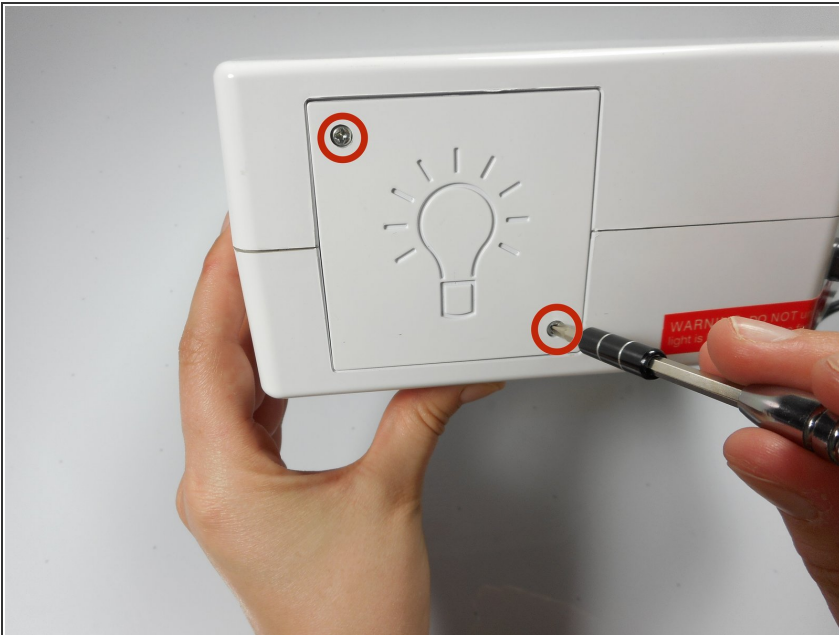
- [Phillips #0 Screwdriver](#) (1)
 - [Portable Soldering Iron](#) (1)
 - [Spudger](#) (1)
-

Step 1 — Outer Casing



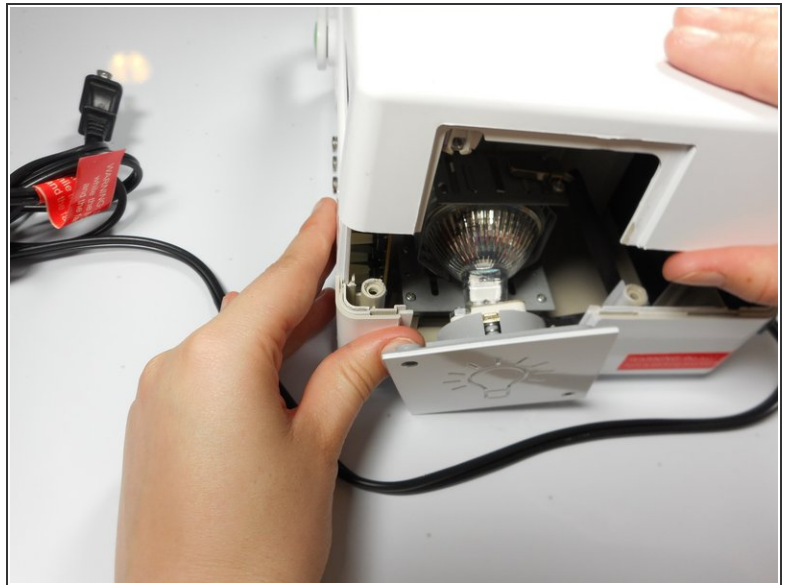
- Flip the projector onto its back and unscrew the nine 15mm screws using the Phillips #0 screw driver.

Step 2



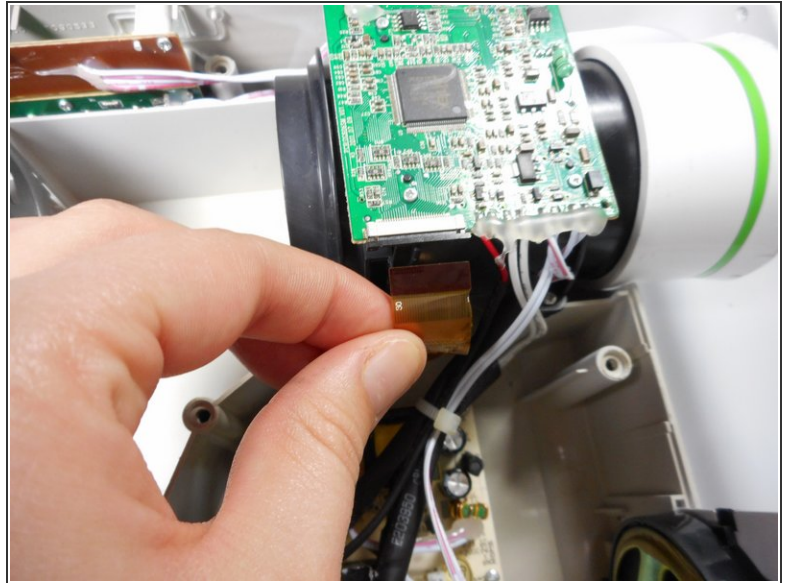
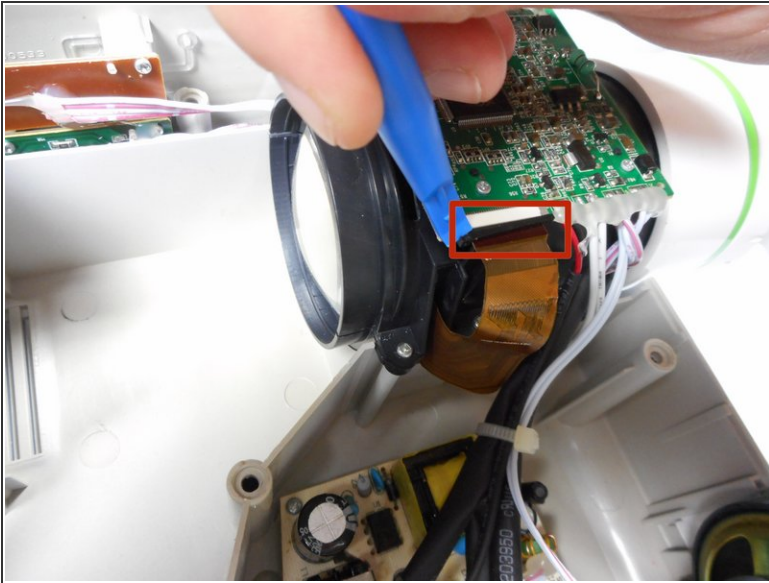
- Flip the projector right side up and unscrew the two 12mm screws on the light bulb panel located at the rear of the projector with a Phillips #0 screw head.
- ⓘ The bottom right panel screw does not come completely out the panel door.

Step 3



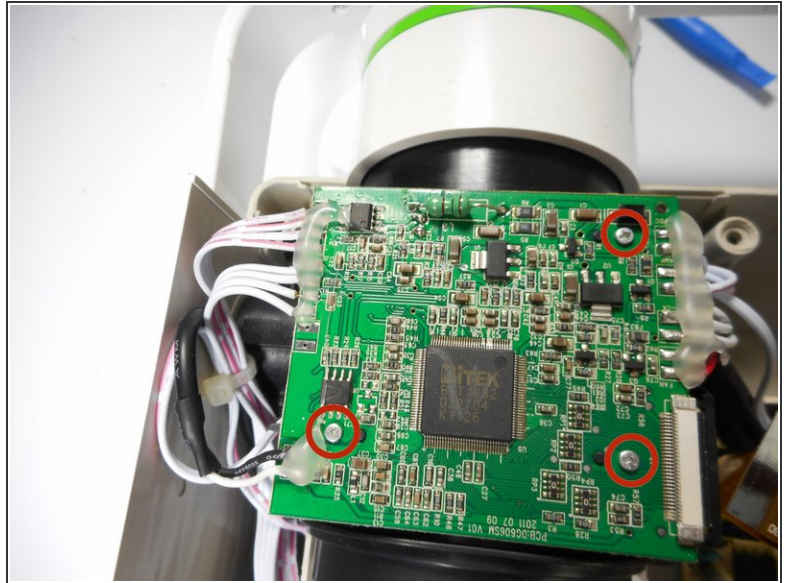
- Using your hands, gently pry the top and bottom of the projector casing apart.

Step 4 — Motherboard



- Use the plastic opening tool to gently disengage the ribbon cable from its back housing.
 - Once the ribbon cable is disengaged gently pull the cable off the motherboard.
- ⚠ Once the housing is disengaged, the ribbon cable should slide out easy. Do not pull too hard on the ribbon cable as it is very fragile.

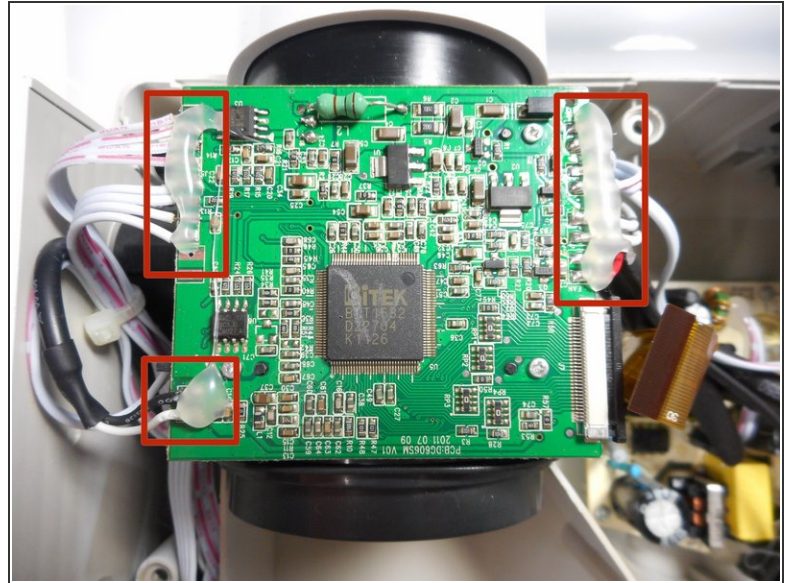
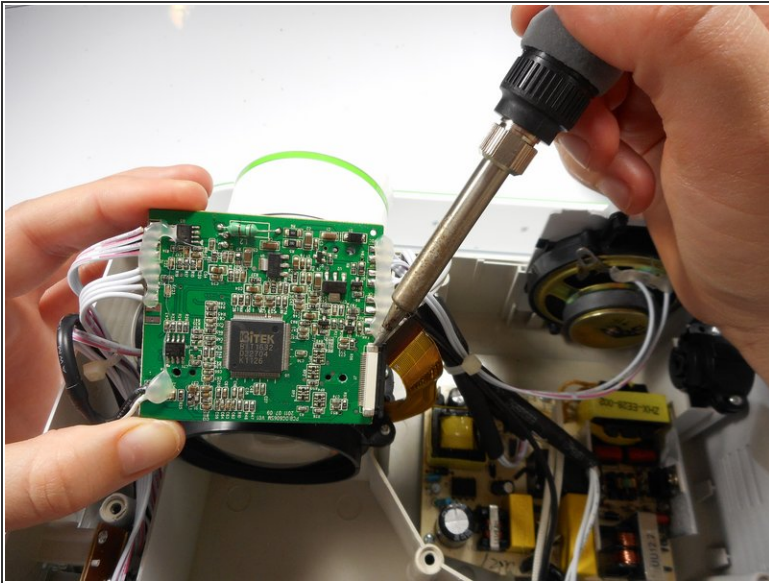
Step 5



- Unscrew the three 6 mm screws from the motherboard with the Phillips #0 screwdriver.

⚠ Be sure not to damage any of the wires attached to the motherboard.

Step 6



- Solder off all of the connections on the motherboard with a soldering iron.
- Once connections are soldered off, the motherboard should be detached and ready for replacement.
- ⓘ Need some help? Follow this [guide](#) to learn soldering basics.
- ⚠ While soldering the metal connections can get very hot. Never touch the iron with your hand. also make sure that the projector is fully turned off and not plugged in.
- ⓘ If there is hot glue on top on the connection with the motherboard, you will need to peel it off using your fingers.

To reassemble your device, follow these instructions in reverse order.