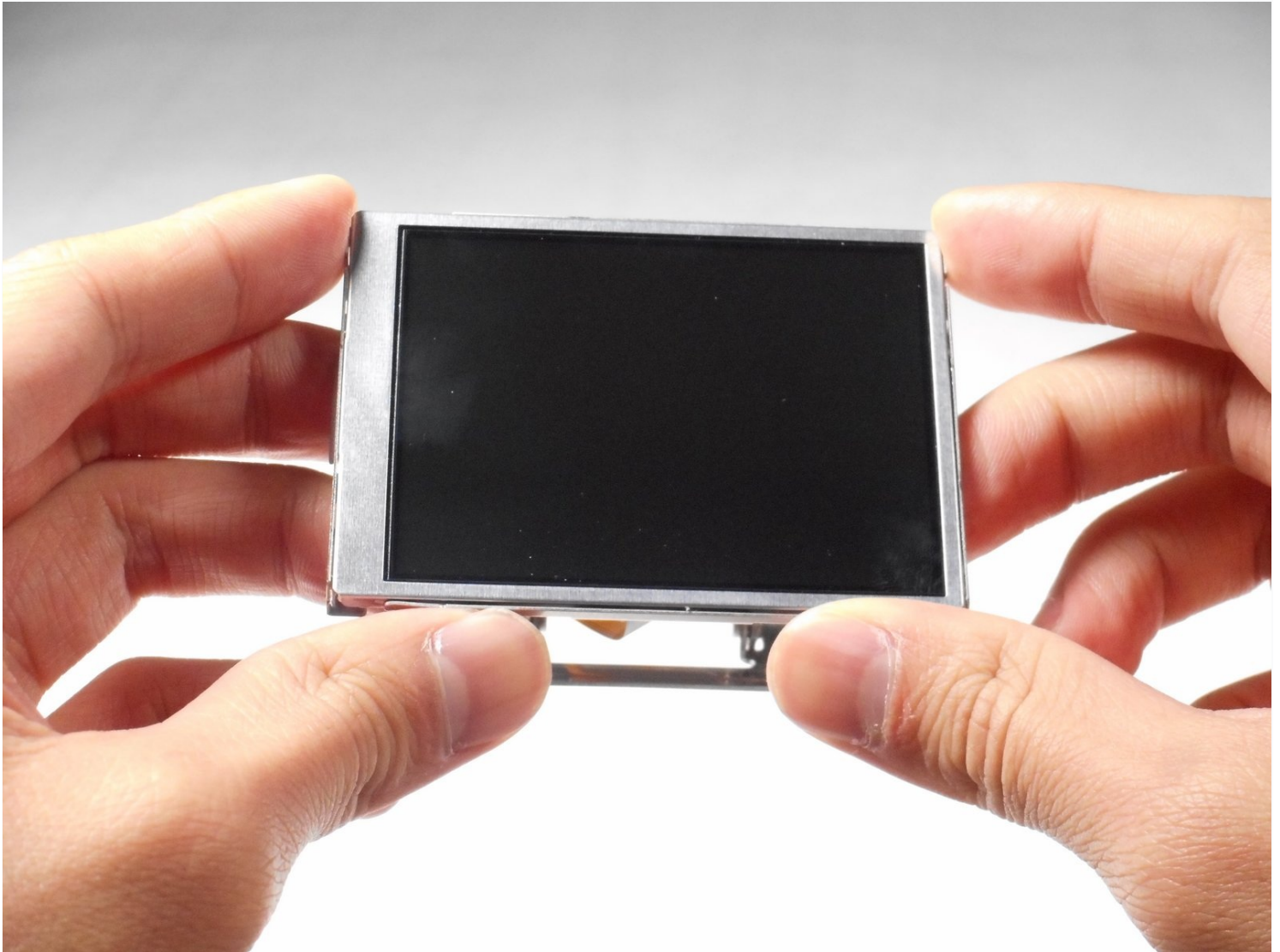




Nikon Coolpix P90 LCD Screen Replacement

Note that the LCD screen display and the glass...

Written By: Elizabeth Kamine



INTRODUCTION

Note that the LCD screen display and the glass screen are separate parts.

TOOLS:

Phillips #000 Screwdriver (1)

iFixit Opening Tool (1)

Step 1 — Camera Base



- Use your finger to push the latch of the compartment door to the center of the camera body, per image 1.
- Push the door open, and remove the existing battery with your fingers, per images 2-3.

Step 2 — LCD Screen



① Use a Phillips #000 Precision Screwdriver for all of the following steps.

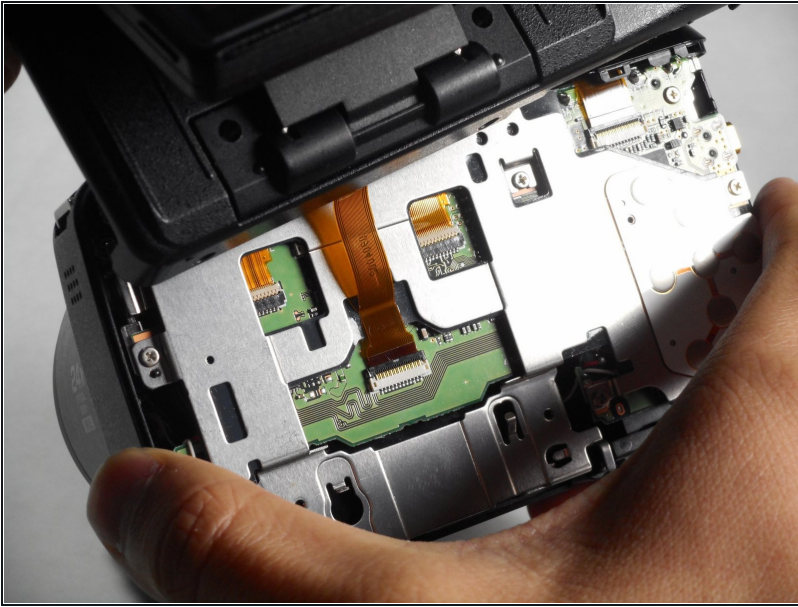
- Remove both 4.5 mm screws holding the bottom into place.
- Remove both 4.5 mm screws holding the side into place.
- Remove the 4.5 mm screw underneath the A/V flap.
- Remove the 4.0 mm screw on the left-side wrist strap loop.

Step 3



- Lift up the LCD screen to reveal the two screws.
- Using a Phillips #000 Precision Screwdriver, remove the two 3.0 mm screws that hold the arm in place.

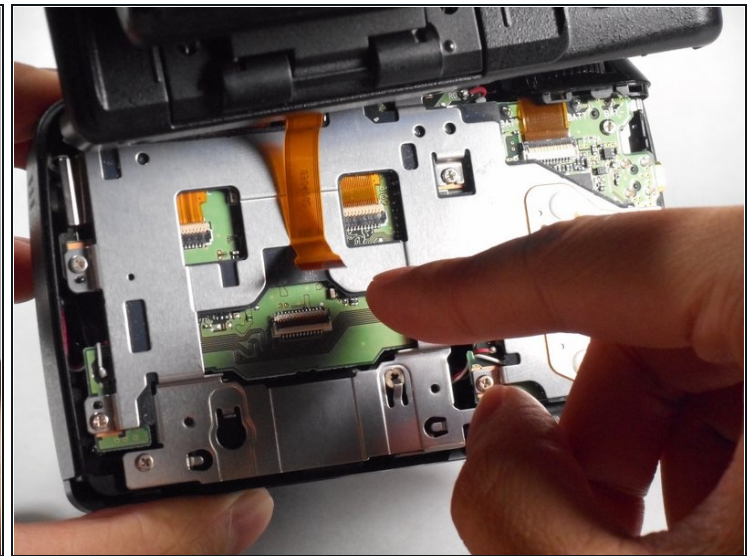
Step 4



- Carefully lift the back cover from the camera.

⚠ Do NOT completely remove the back cover from the camera yet. There is a data transfer ribbon connecting the LCD screen to the motherboard.

Step 5



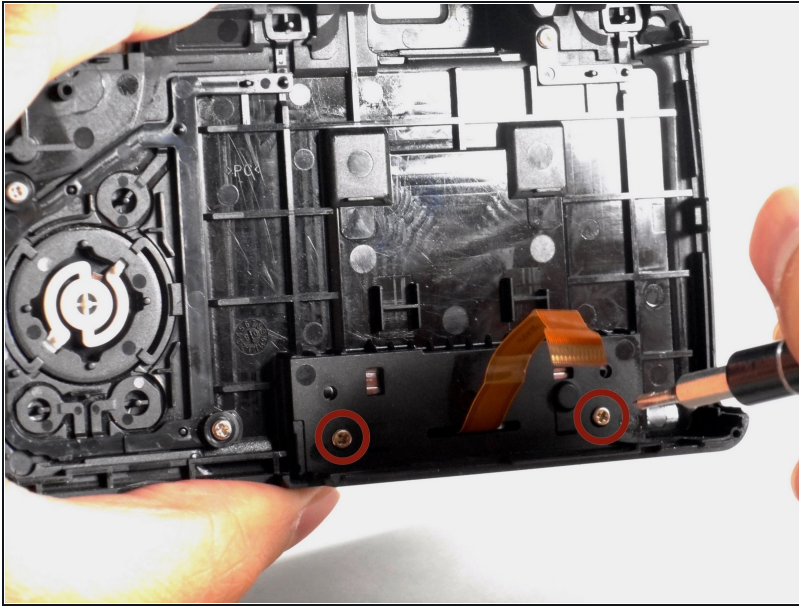
- Press your finger on the top of the latch and pull it down and towards you to open the safety latch and free the ribbon.

⚠ Be careful when removing the safety latch as it is fragile and may break easily.

- Slide the ribbon out from its socket.

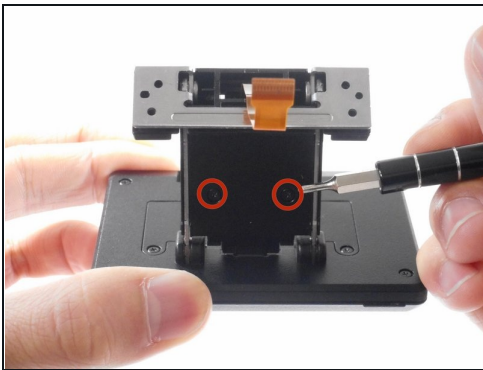
ⓘ It is now safe to completely remove the back cover from the camera.

Step 6



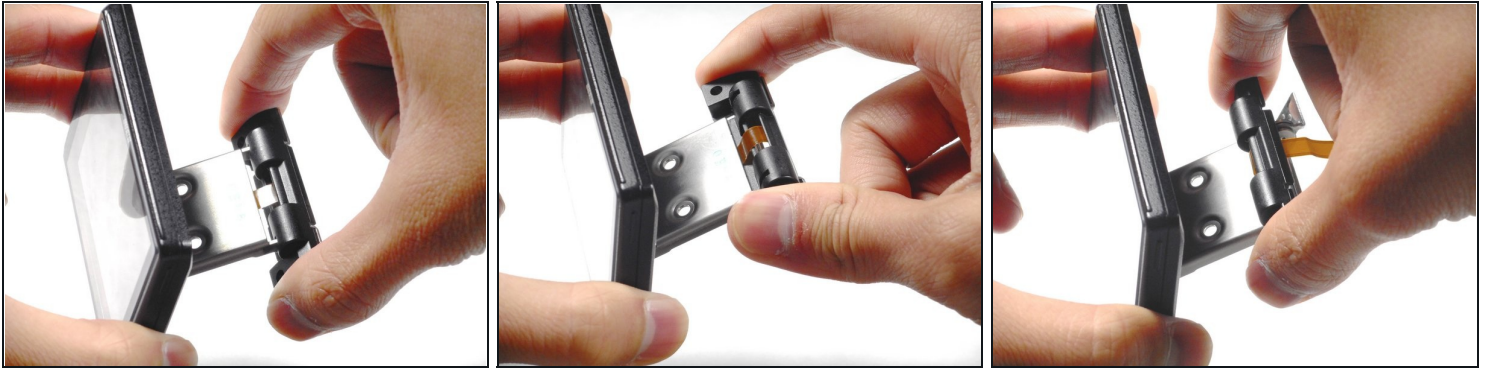
- Using a Phillips #000 Precision Screwdriver, remove the two 6.0 mm screws from the inner back panel that hold the LCD screen arm in place.

Step 7



- Using a Phillips #000 Precision Screwdriver, remove the two 3.0 mm screws.
- Remove the plastic cover from the LCD screen arm.

Step 8



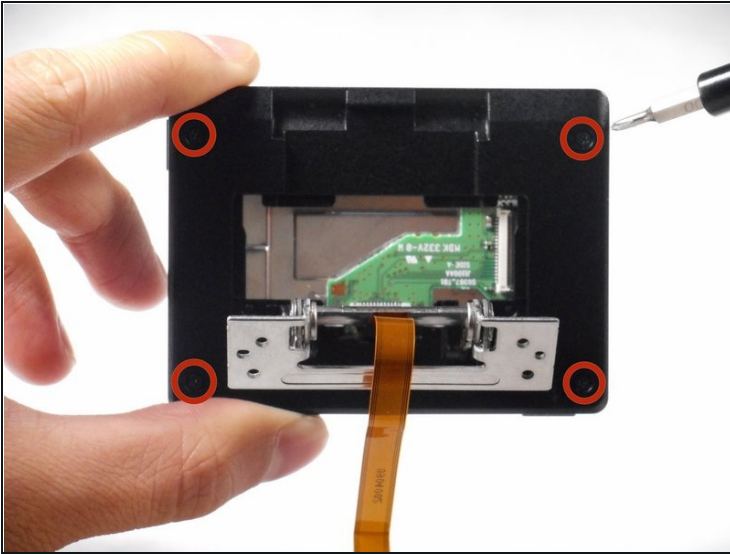
- Lift and rotate the plastic connector counter-clockwise, clockwise, then counter-clockwise again.
- Remove the plastic connector from the LCD screen arm.

Step 9



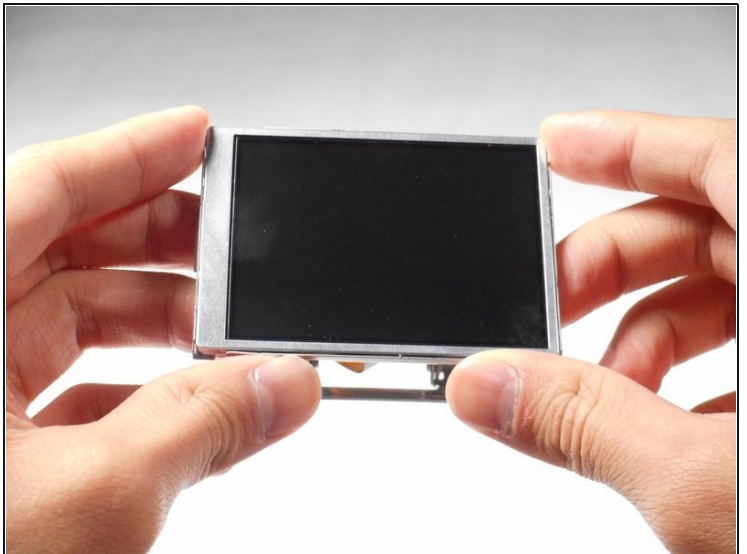
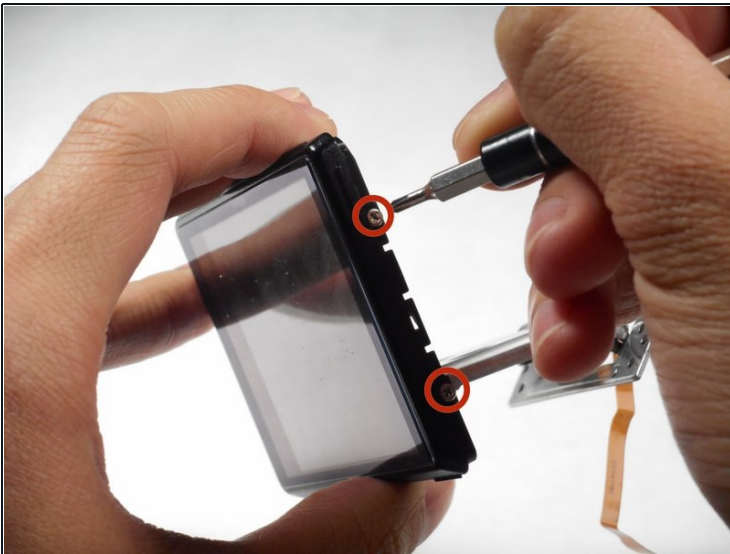
- Using a Phillips #000 Precision Screwdriver, remove the two 4.0 mm screws.
- Take off the plastic covering to reveal the inner components of the LCD screen.

Step 10



- Using a Phillips #000 Precision Screwdriver, remove the four 3.0 mm screws.
- Using your fingers, remove the two plastic borders that case the LCD screen.
- ① A plastic opening tool is not necessary, but may be helpful.

Step 11



- Using a Phillips #000 Precision Screwdriver, remove both 3.5 mm screws from either side of the LCD screen.
- Remove the LCD screen from the screen cover.

To reassemble your device, follow these instructions in reverse order.