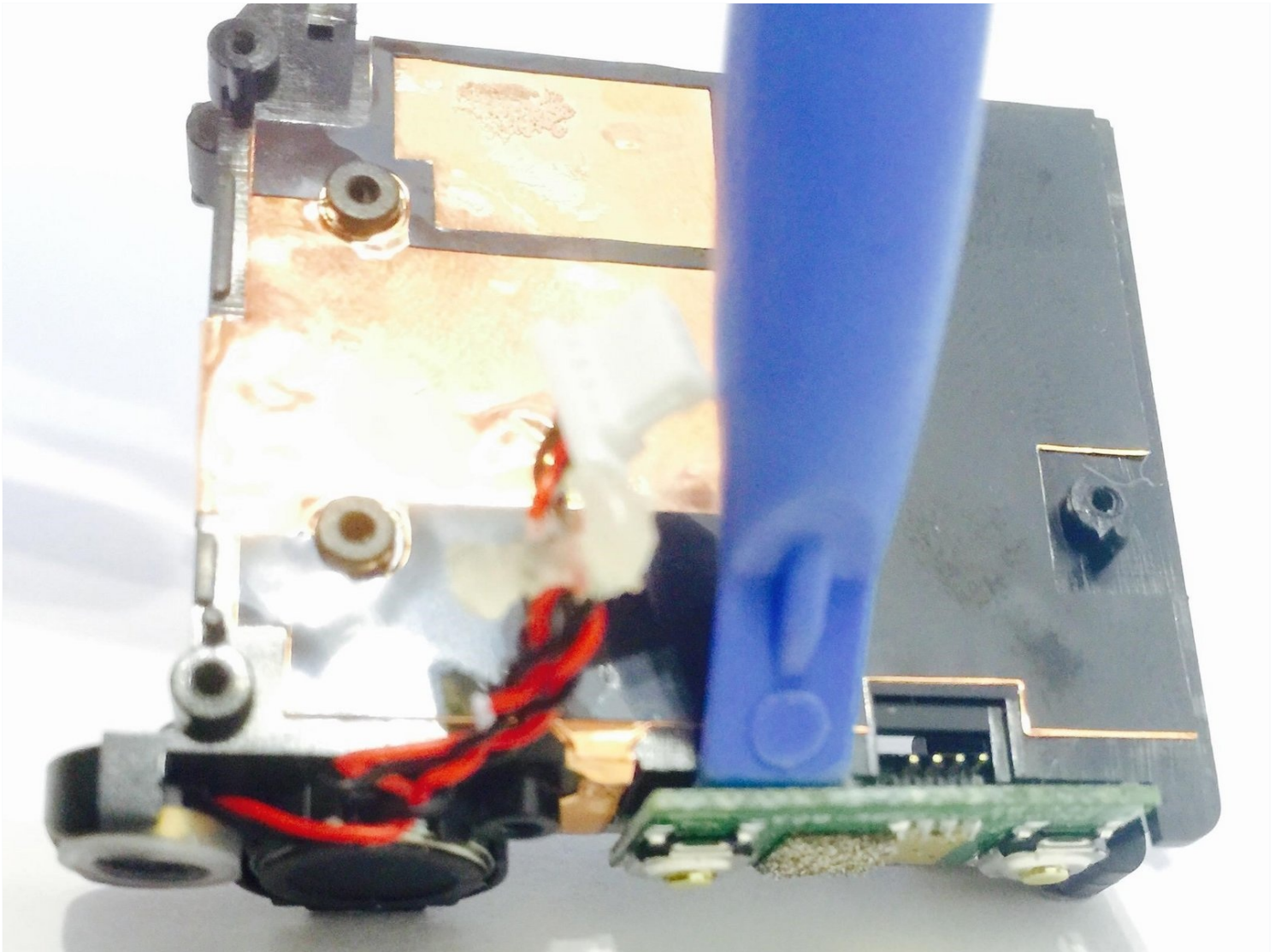




JVC Adixxion GC-XA1BU Power & Record Button Board Replacement

If the power or record button isn't working on...

Written By: Christina Michelle Johnson



INTRODUCTION

If the power or record button isn't working on your JVC Adixxion GC-XA1BU, follow the instructions to replace the board. To complete this guide, you will need to purchase a new power/record button board and make sure that you have the tools listed. It is always good practice to make sure that the device is completely powered off and remove the battery before attempting any repairs.

TOOLS:

[T6 Torx Screwdriver](#) (1)

[Phillips #00 Screwdriver](#) (1)

[iFixit Opening Tool](#) (1)

[Tweezers](#) (1)

Step 1 — Battery



- Find the side of the camera that looks like this.

Step 2



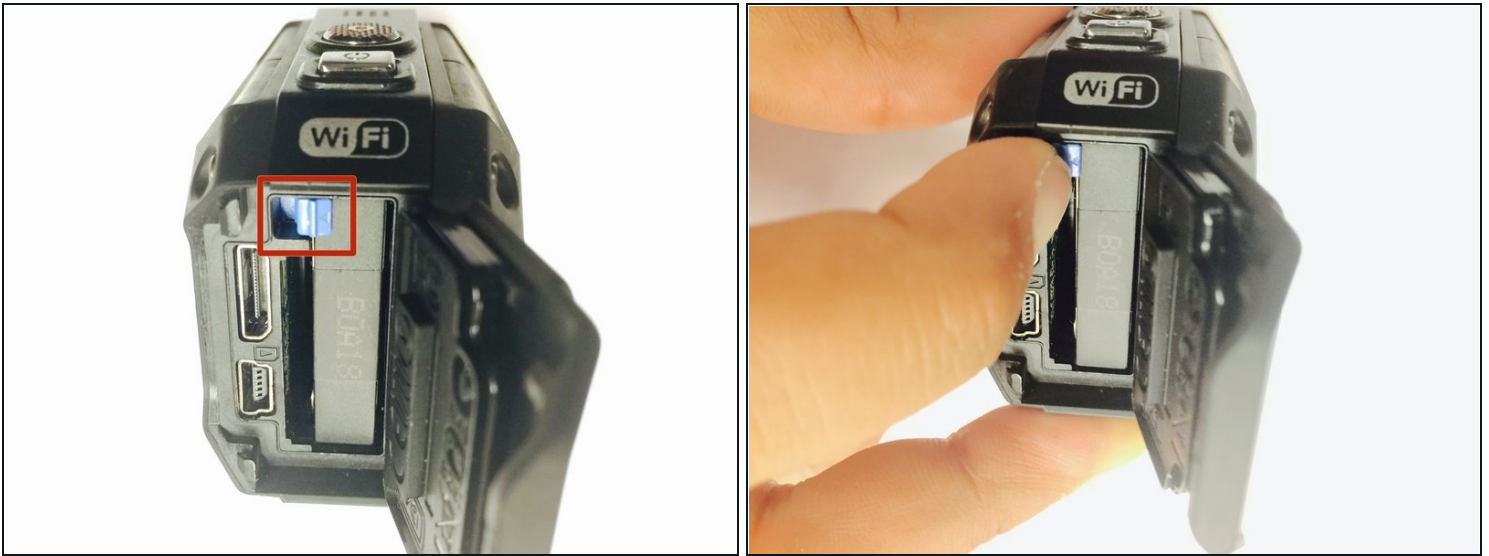
- Push down on the black switch.

Step 3



- While still pushing down on the black switch, slide back the battery cover (see photo for direction).

Step 4



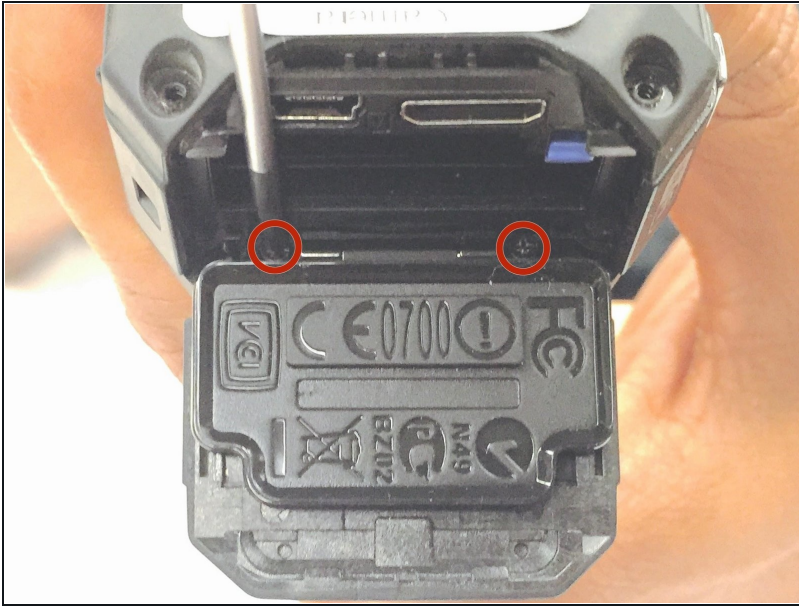
- Push the cover up to open the battery compartment, and then push the blue battery release switch.

Step 5



- You can now take the battery out of the camera.

Step 6 — Battery Cover



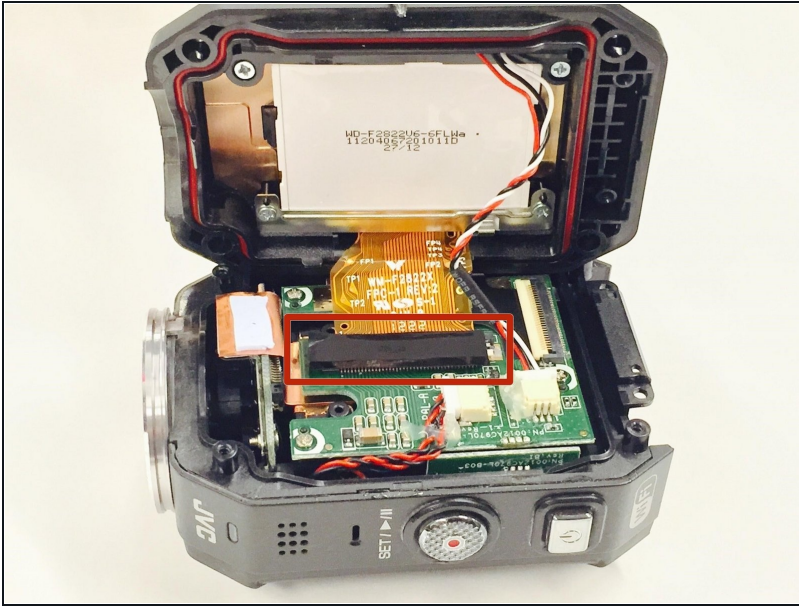
- After removing the battery, take out the two Phillips screws (4mm headsize x 3mm length) screws. You can now remove the battery cover.

Step 7 — LCD Cover



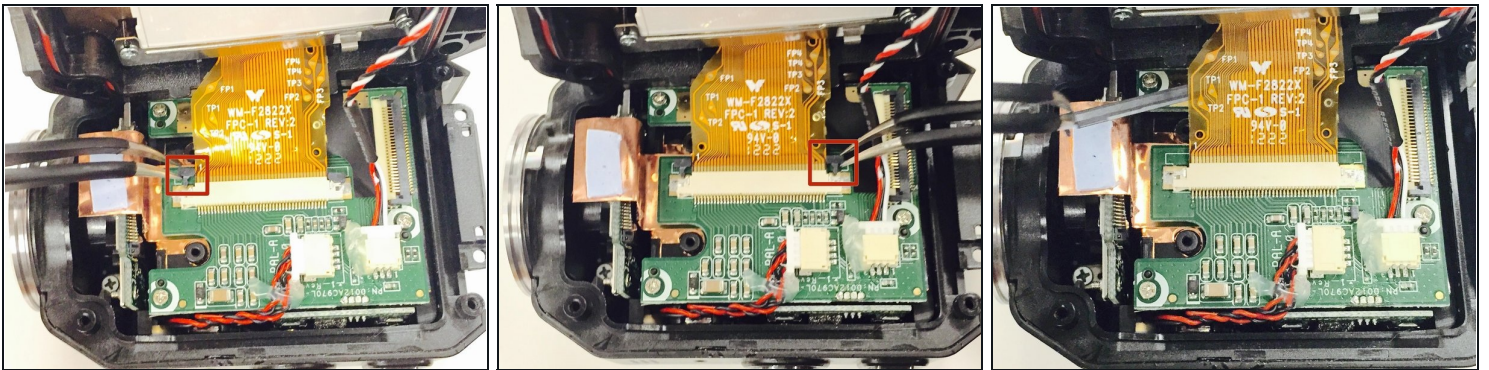
- Using a 1x1xH1.5 torx screwdriver, remove the 8 screws (5mm headsize / 4mm length) from the corners of both the front and back of the camera (4 screws on each side).

Step 8



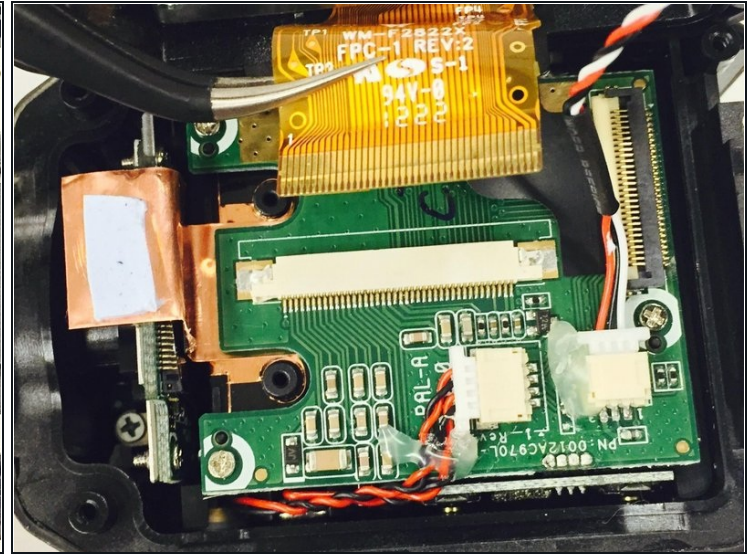
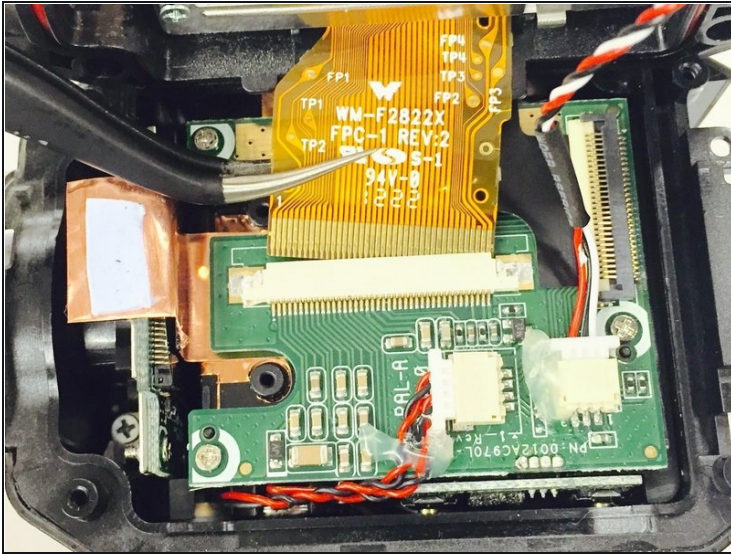
- Carefully lift open the camera from the side of the device with the record and play buttons. Then remove the black cover tape by gently peeling it off. Make sure to save this tape as you may need it when you re-assemble the device.

Step 9



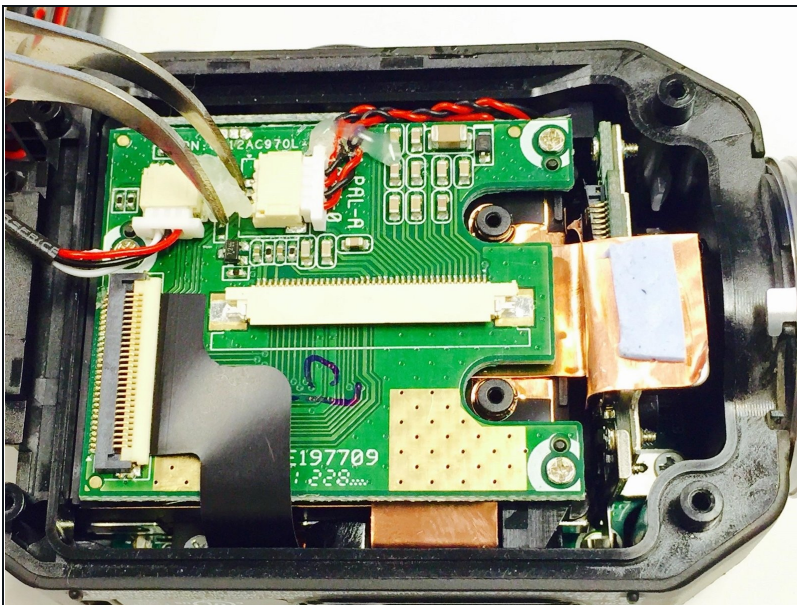
- Using the tweezers, carefully push up the left and right sides of the cable ribbon clip. Use the tweezers to lift up and remove the clip.

Step 10



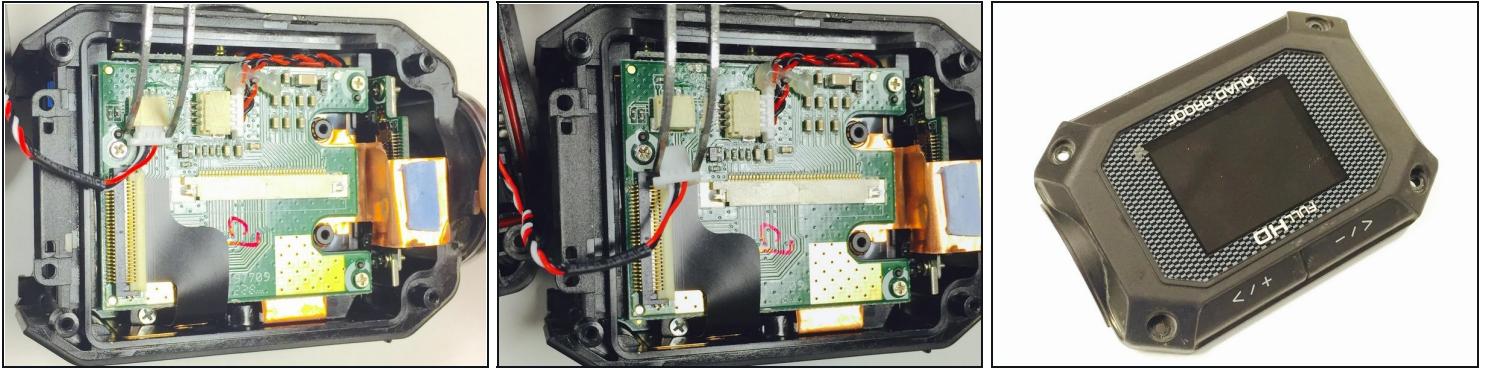
- Using the tweezers, carefully remove the ribbon cable by gently grasping it and pulling up.

Step 11



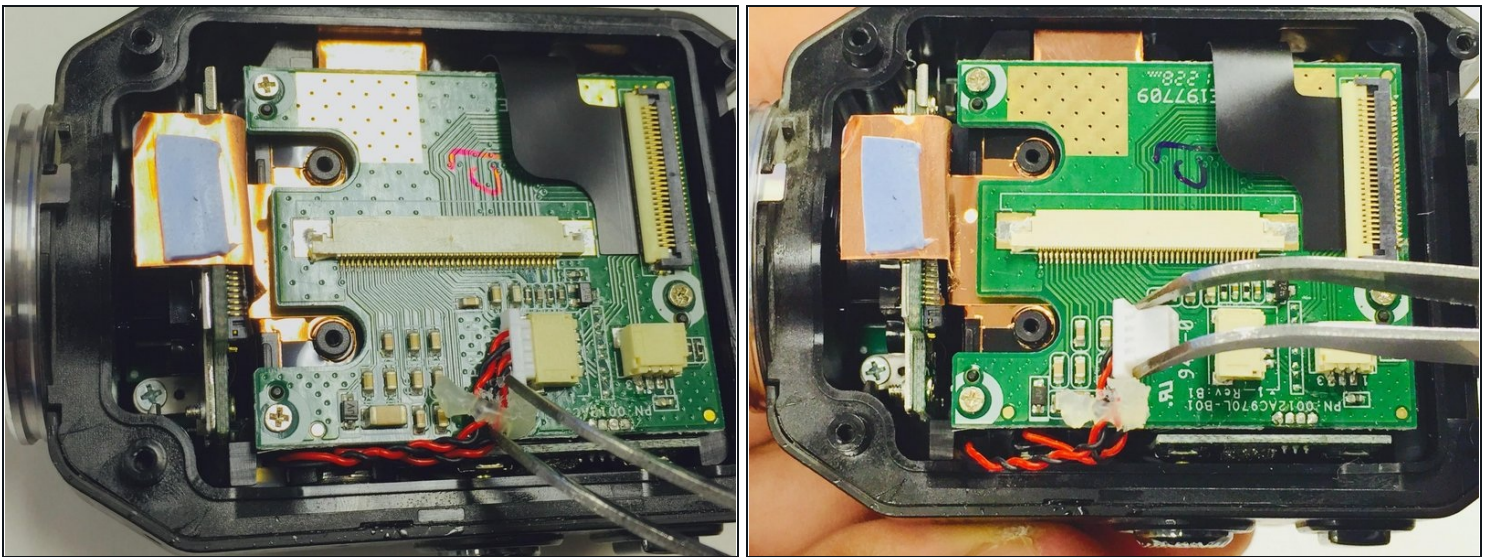
- Turn the camera 180 degrees, and gently remove the glue from the connector as shown in the photo. Make sure you save the glue as you may need it when re-assembling your device.

Step 12



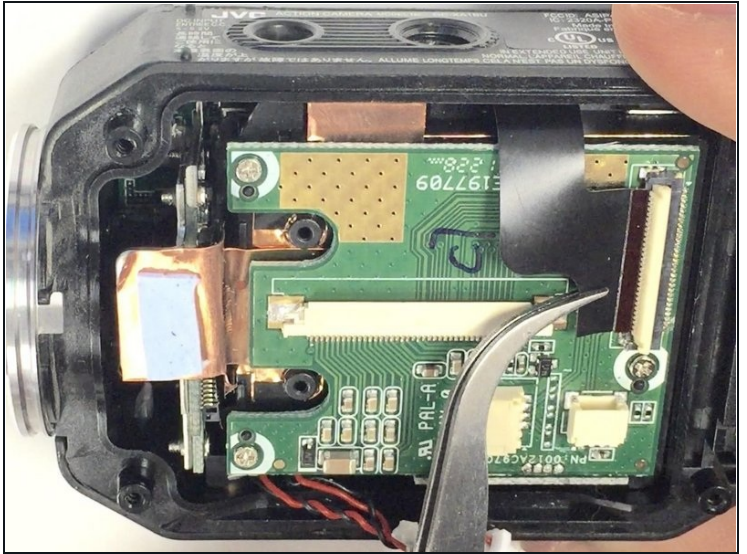
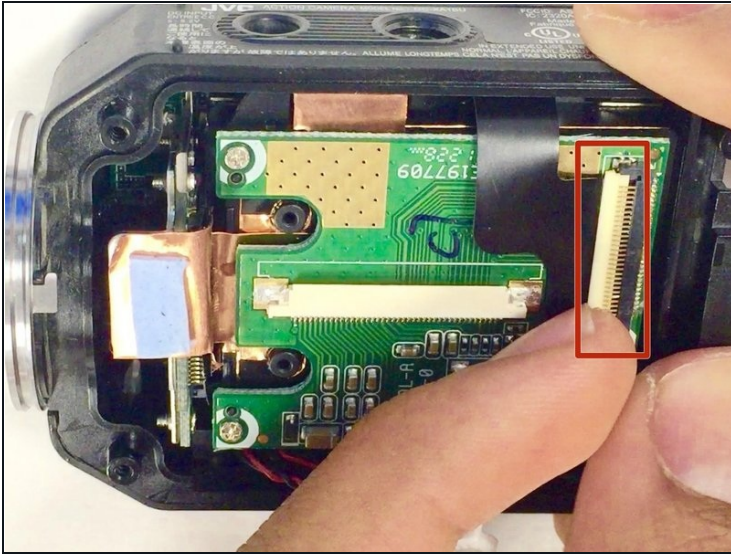
- Now take out the connector by pulling the white clip out of the casing (as shown in the photos). This will disconnect the screen from the main cable, allowing you to attach your new LCD cover.

Step 13 — Battery Housing



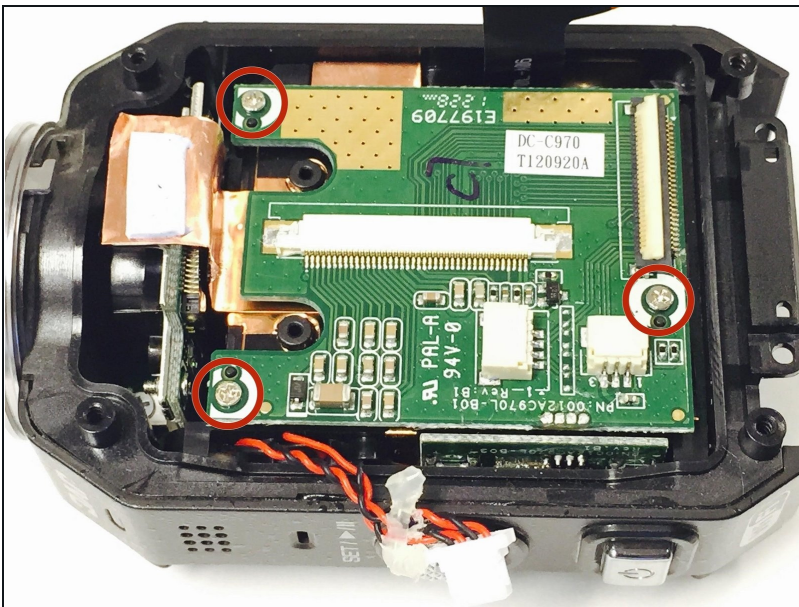
- Carefully peel off the glue holding the red and black braided wire down to the circuit board. Then remove the connector by gently pulling it out of its casing. You will want to save this glue as it may come in handy when re-assembling your device.

Step 14



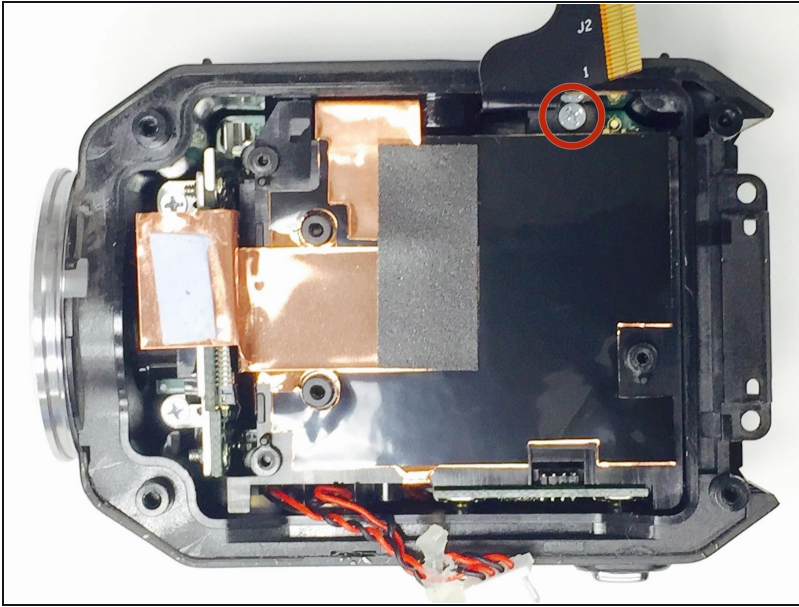
- Lift up the white ribbon clip and remove the black ribbon by gently pulling it away from the white clip.

Step 15



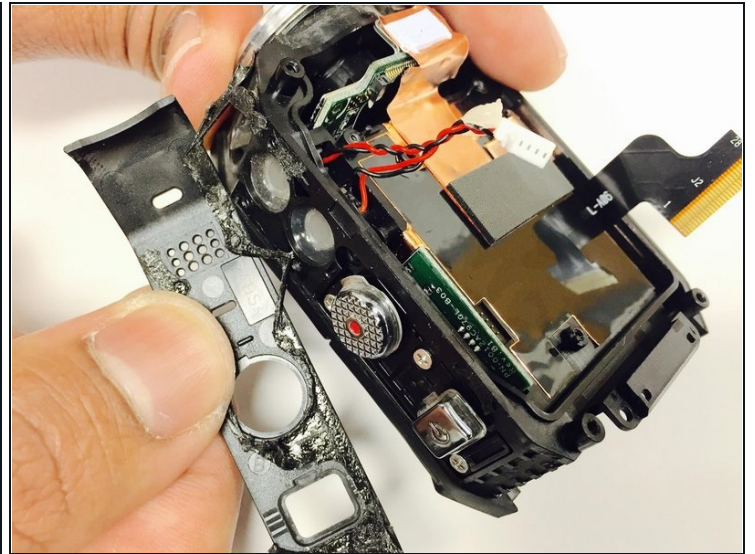
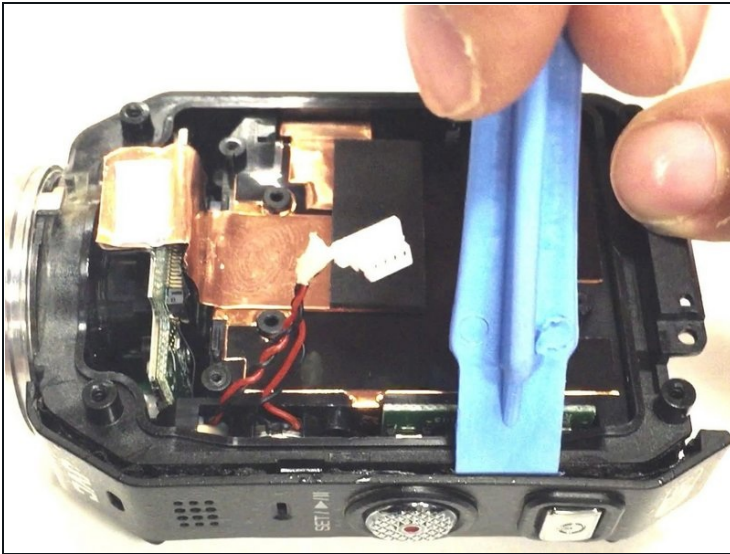
- Remove the the three Phillips screws (3mm headsize x 2mm length) from the circuit board. After you remove the screws, you can then remove the green circuit board by lifting it up out of the device case. You may want to use the plastic opening tool to get start lifting the circuit board.

Step 16



- Once the circuit board is removed, you will want to remove the Phillips screw (3mm headsize x 2 mm length) near the ribbon cable. ONLY REMOVE THIS ONE SCREW.

Step 17



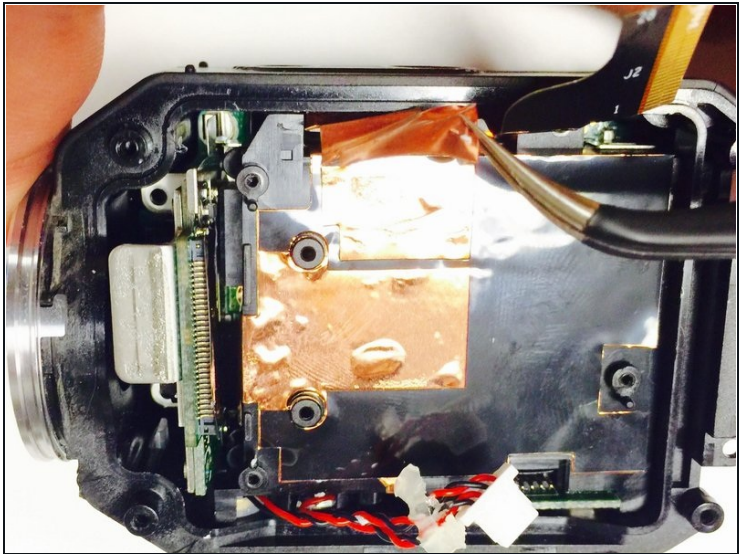
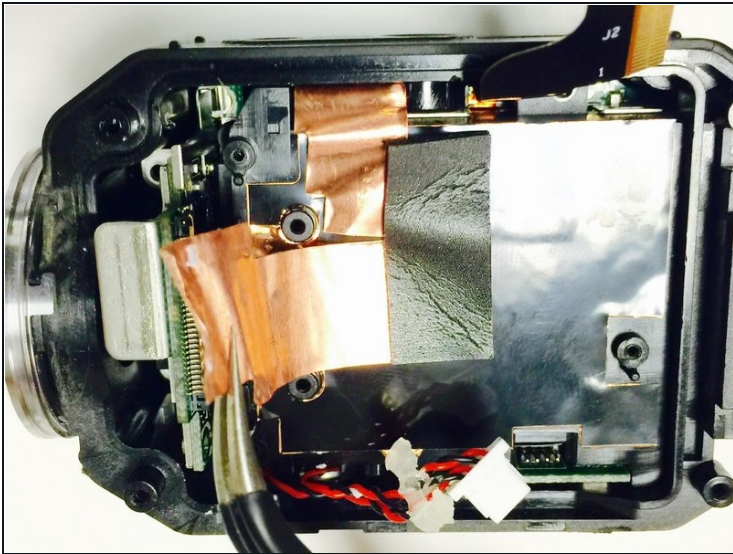
- Use the plastic opening tool to gently remove the top cover from the camera. It is glued on, so you may need to work at it to get it to come off.

Step 18



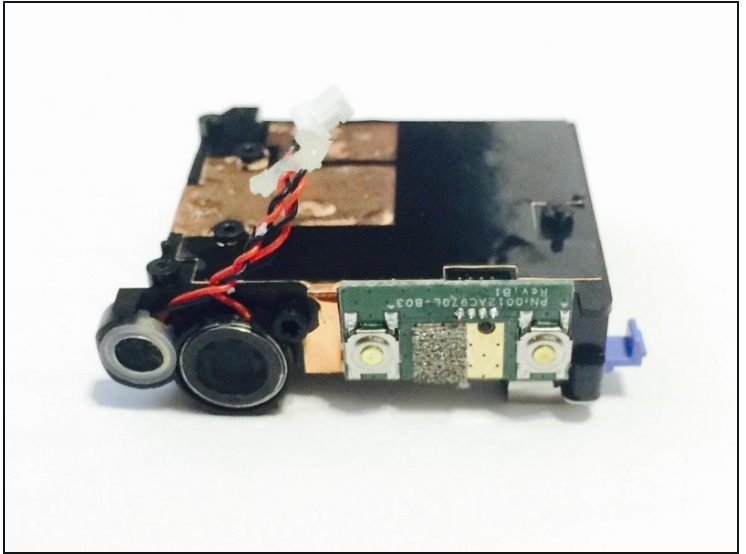
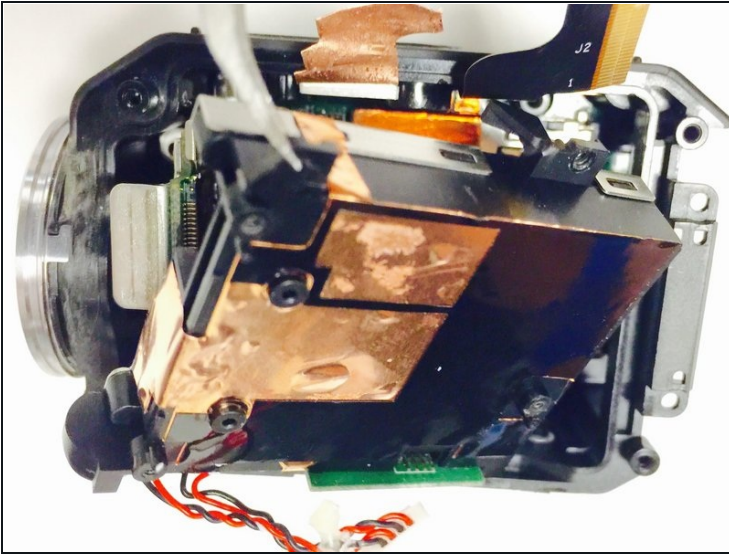
- Once the cover has been removed, you will want to remove the three Phillips screws (2mm headsize x 2mm length) that are underneath.

Step 19



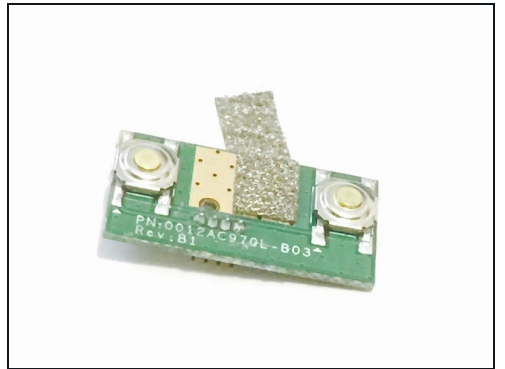
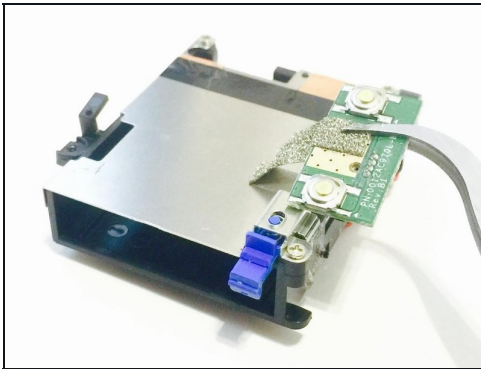
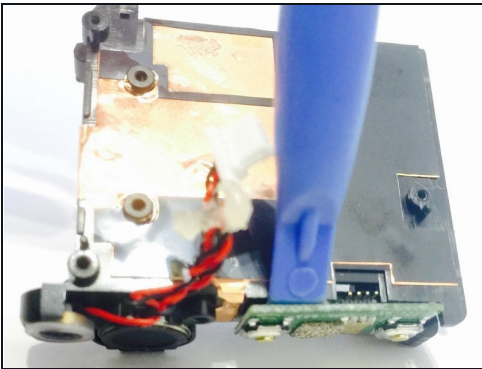
- Carefully remove both the top and bottom copper strips by gently pulling them off with the tweezers.

Step 20



- Now you should be able to gently remove the battery housing out of the device. If you are having difficulty getting the battery housing to come out, you may want to use the plastic opening tool to help get it started.

Step 21 — Power & Record Button Board



- The power and record buttons are glued to the battery housing, so use the plastic opening tool to gently pry off and remove the buttons.

To reassemble your device, follow these instructions in reverse order.