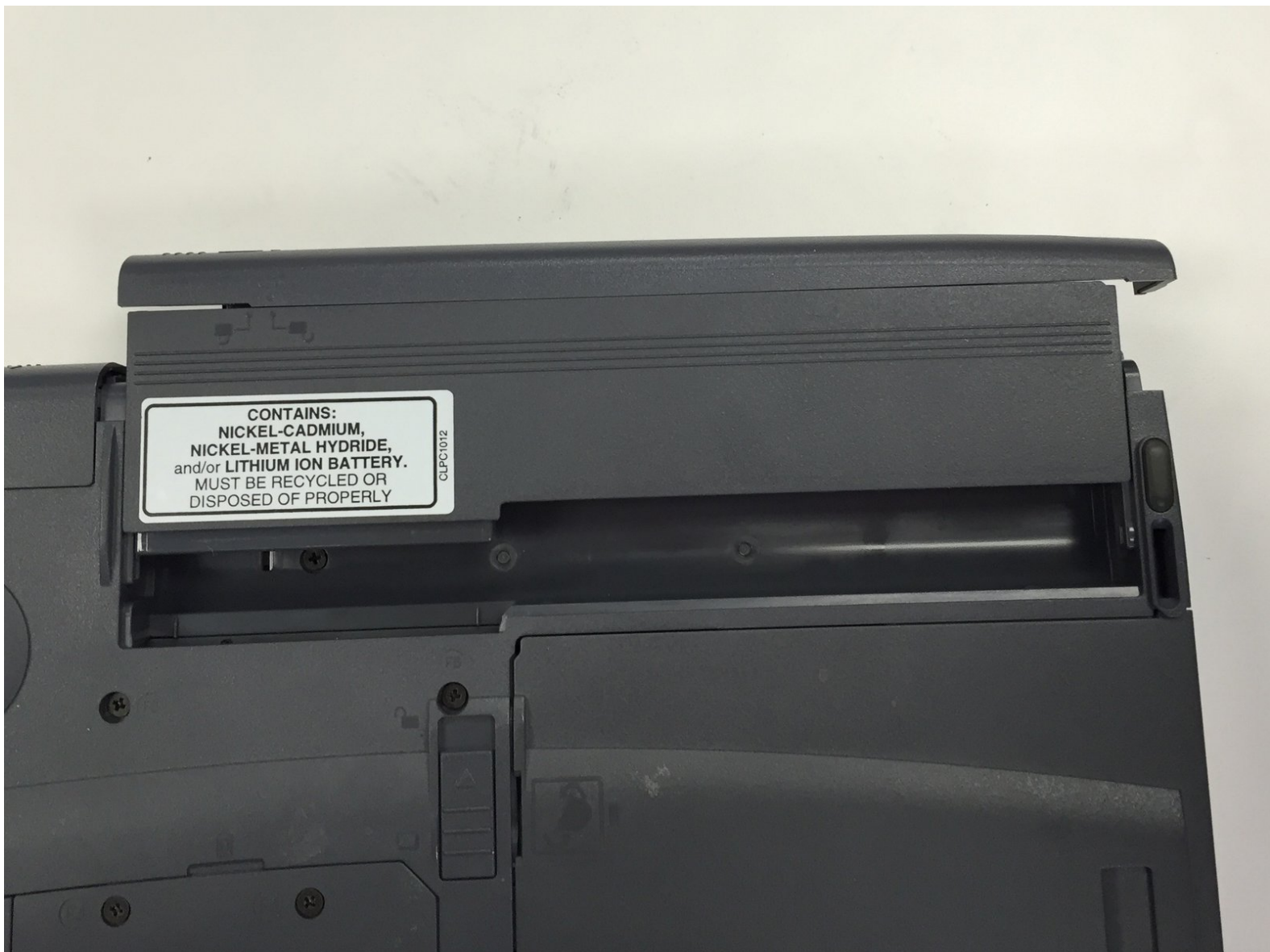




Toshiba Tecra 8200 Battery Replacement

Follow these easy steps to remove the battery from Toshiba Tecra 8200.

Written By: Sally




INTRODUCTION

Follow these easy steps to remove the battery from Toshiba Tecra 8200.

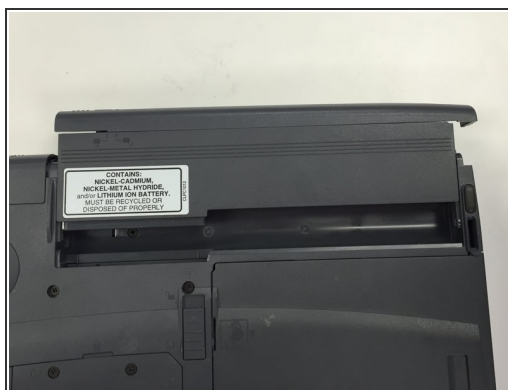
Step 1 — Battery



 Turn off the device and unplug the power cord.

- To remove the battery, flip the device, so that the bottom is facing upward.

Step 2



- Slide the battery to the right side until you hear a click.
- Carefully remove the battery from its compartment.

To reassemble your device, follow these instructions in reverse order.