



# Nintendo DSi Battery Replacement

Replacing your DSi's battery only requires a...

Written By: Walter Galan



# INTRODUCTION

Replacing your DSi's battery only requires a Phillips #00 screwdriver and a thin prying tool.

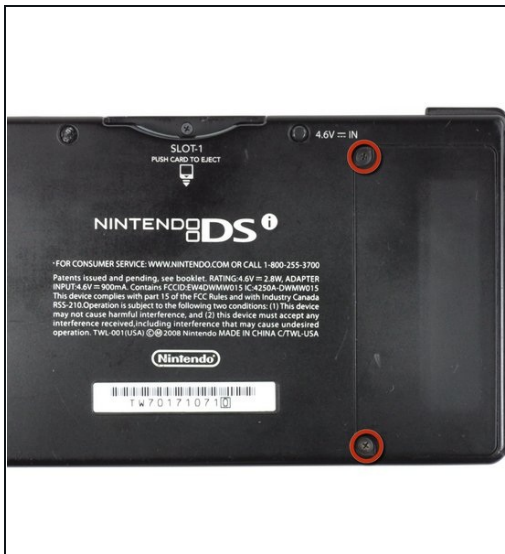
## 🔧 TOOLS:

Phillips #00 Screwdriver (1)  
iFixit Opening Tool (1)

## ⚙️ PARTS:

Nintendo DSi Battery (1)

## Step 1 — Battery Cover Removal



- Unscrew the two Phillips screws securing the battery cover to the lower case.
  - ⓘ The screws remain captive to the battery cover.
- Grasp the battery cover and lift it out of the lower case.
  - ⓘ If it's difficult to grasp, lightly tap the opposite side of the device.

## Step 2 — Taking out the Battery



- Using a spudger tool (or your fingernail), lift up the battery from the top.
  - ⓘ The liquid damage indicator sits underneath the battery. Pry gently, or you may damage the indicator.
  - ⓘ There's a small tab on the top of the battery to make removal easier.
- Grasp the battery and remove it from the DSi.

---

To reassemble your device, follow these instructions in reverse order.