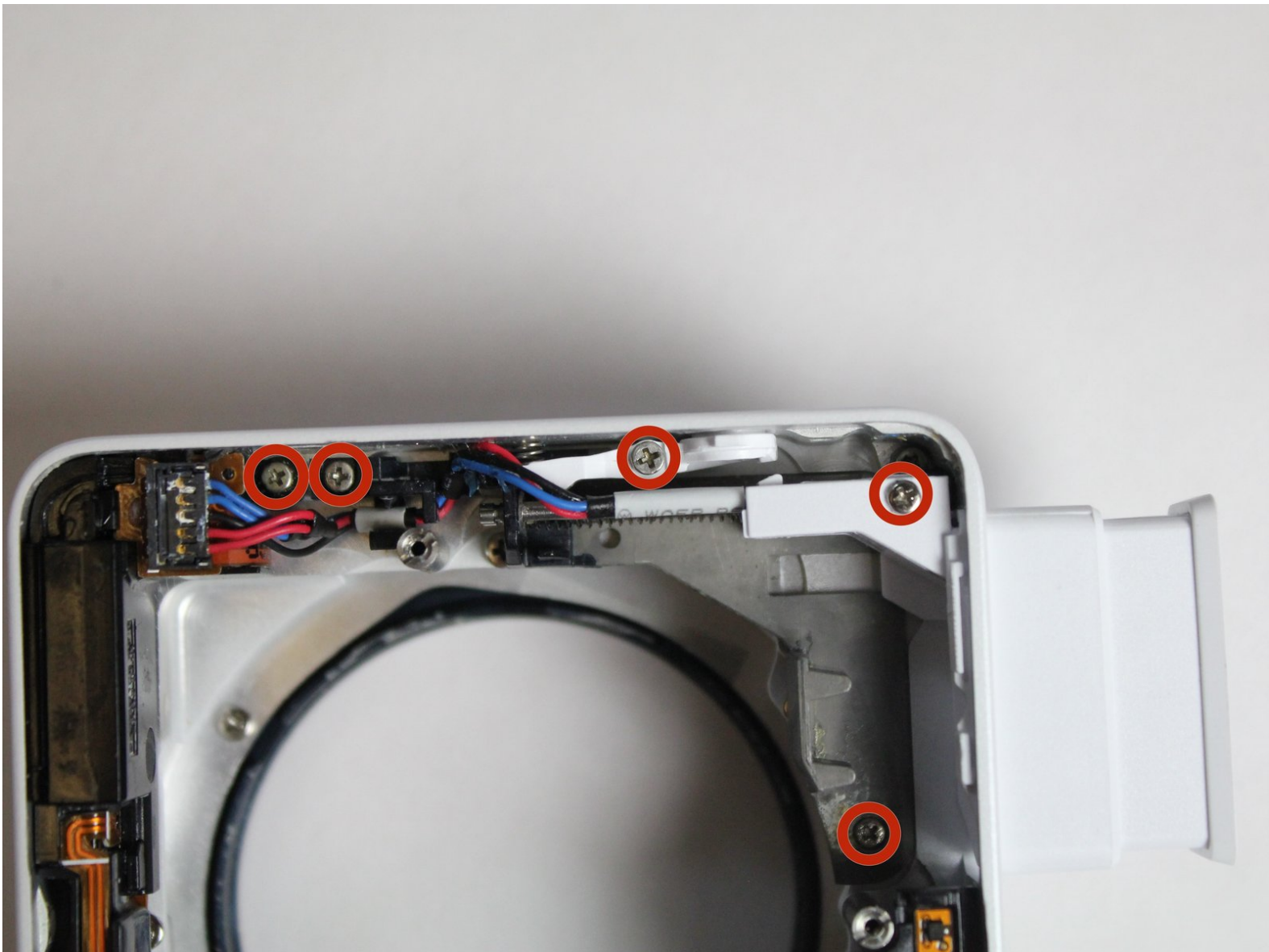




# Samsung Galaxy Camera Camera Flash Replacement

Written By: Richard Hicks





## TOOLS:

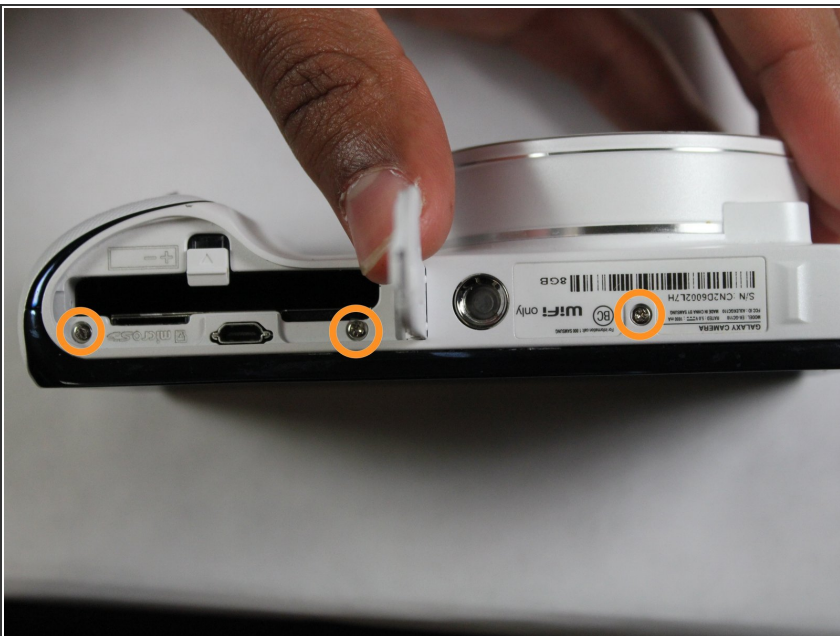
- [Phillips #0 Screwdriver](#) (1)
  - [iFixit Opening Tool](#) (1)
-

## Step 1 — Screen



- Begin removing the 3/16" screws for the device.

## Step 2



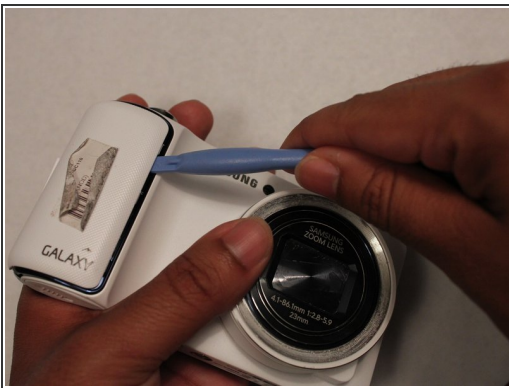
- Turn the device and remove the additional 3/16" screws.

### Step 3



- Turn the device and remove the additional 3/16" screw.

### Step 4



- Take the white cover plate off.

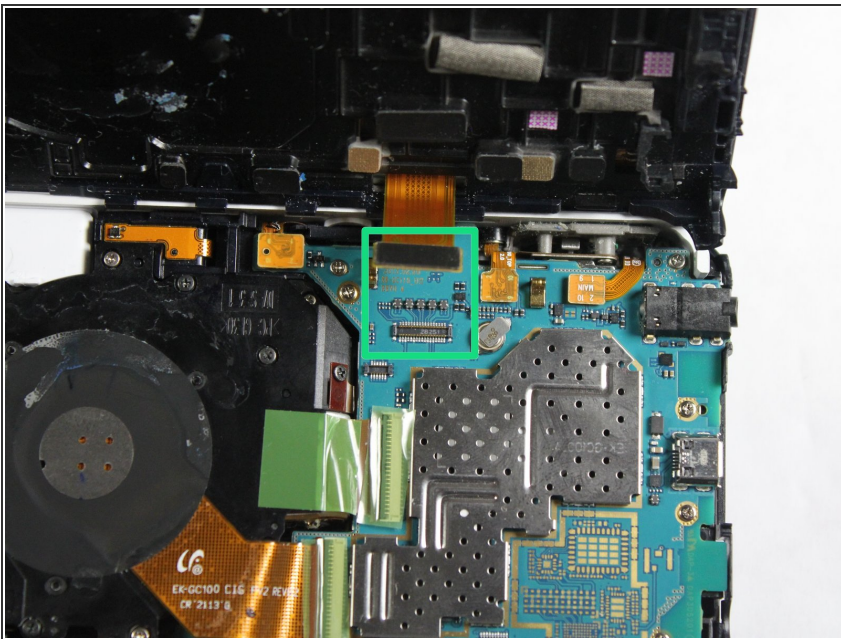


## Step 5



- Using the plastic opening tools, pry open the camera from the bottom.
- ⓘ This may require a moderate use of force because of the sealing glue.

## Step 6



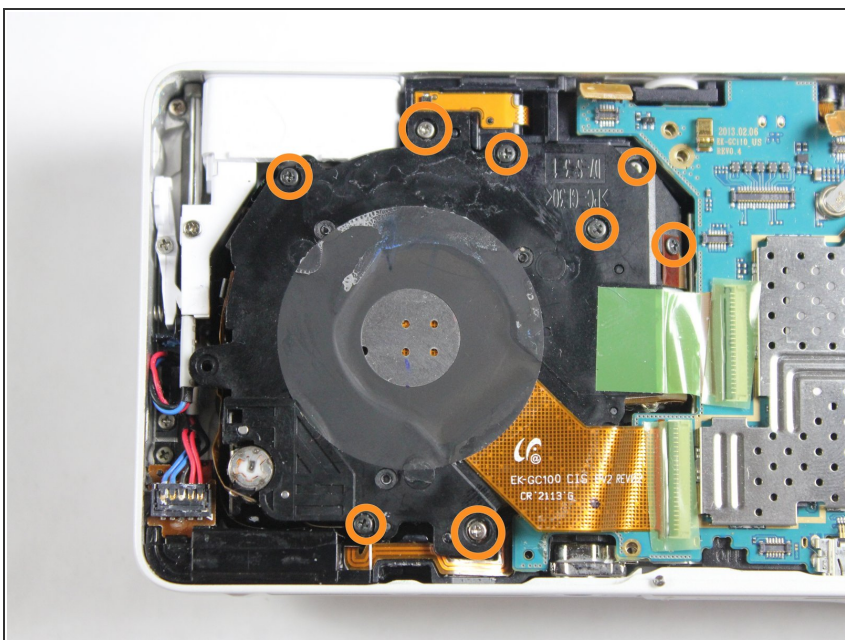
- Gently pull the connector away from the motherboard.

## Step 7 — Lens and Motherboard



- Unscrew the motherboard's screws. There are 4 3/32" screws and 3 5/32" screws.

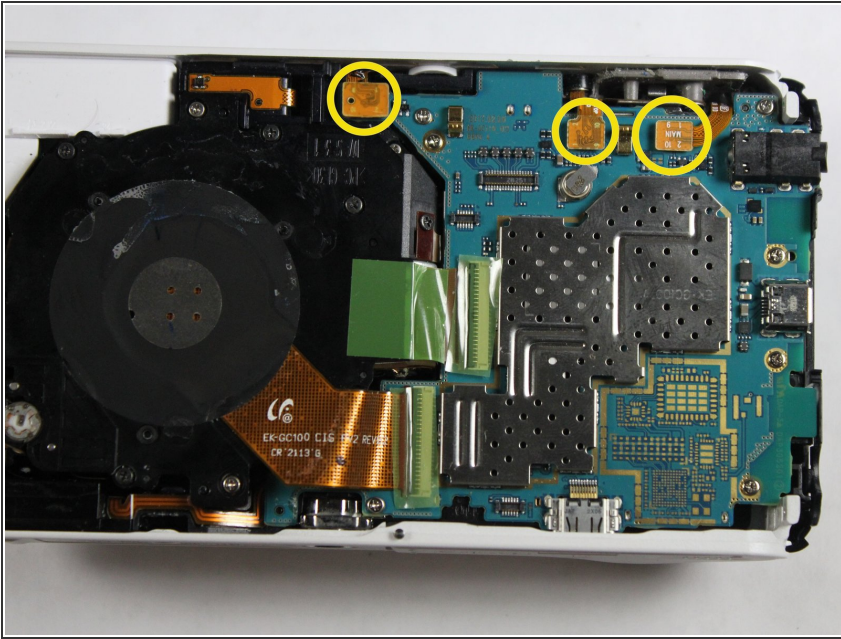
## Step 8



- Unscrew the lens' screws. There are 1 black 4/32" screw, 3 3/16" black screws, and 2 white 5/32" screws.



## Step 9



- Pull these connectors away from motherboard.

## Step 10



- Lift the motherboard and lens out of the case.

## Step 11 — Unscrew



- Remove all the screws circled. There is 1 1/8" screw by the flash, 1 9/32" screw that holds the flash button, 2 5/32" screw that is on the grey frame for the flash, and 2 5/32" screws that holds the cable frames on the top left.

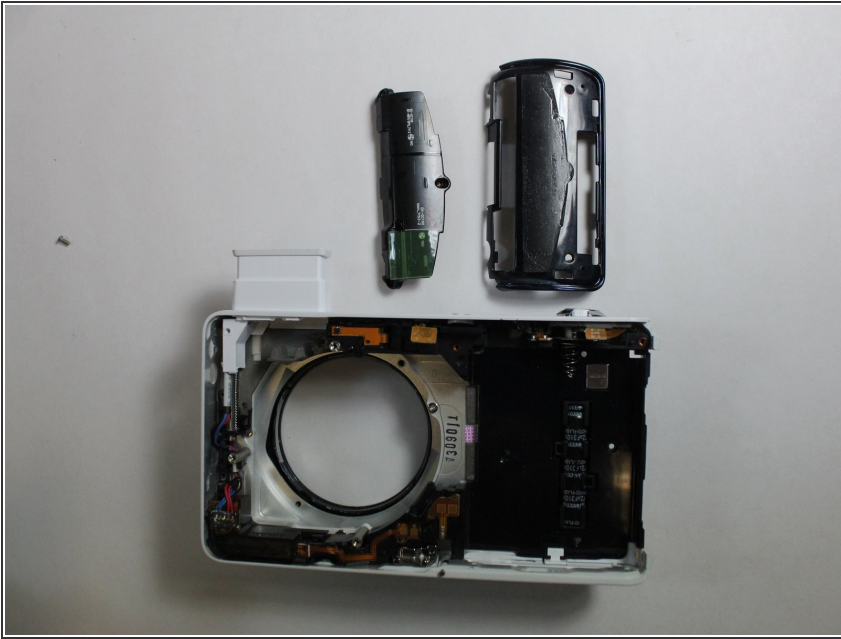
## Step 12



- Unscrew the 3 5/32" screws that cover the battery plate.

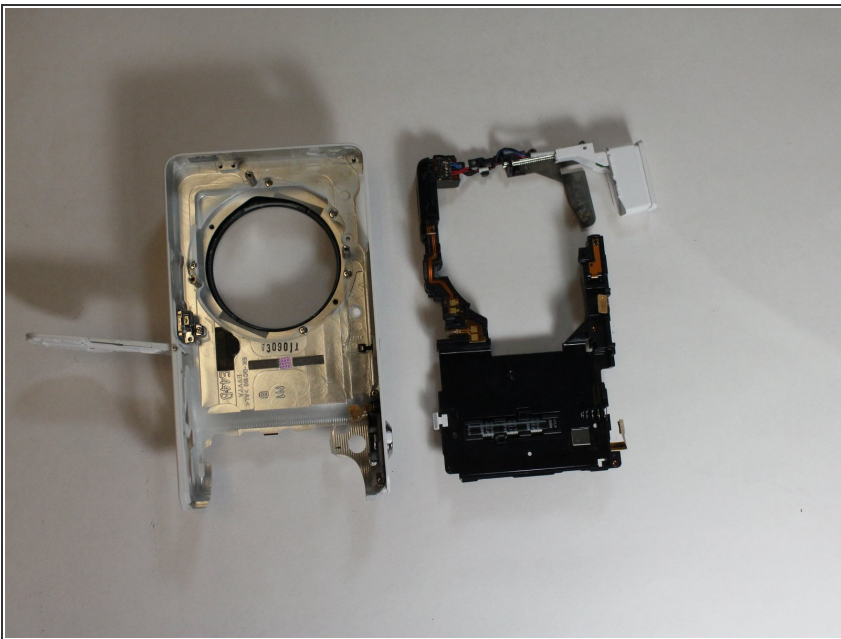


## Step 13



- The black plates on the other side can be removed after these screws.

## Step 14



- Pull the flash and battery case out of the device.

To reassemble your device, follow these instructions in reverse order.