



Samsung Galaxy Camera Screen Replacement

These are the steps for replacing the Screen.

Written By: Richard Hicks





TOOLS:

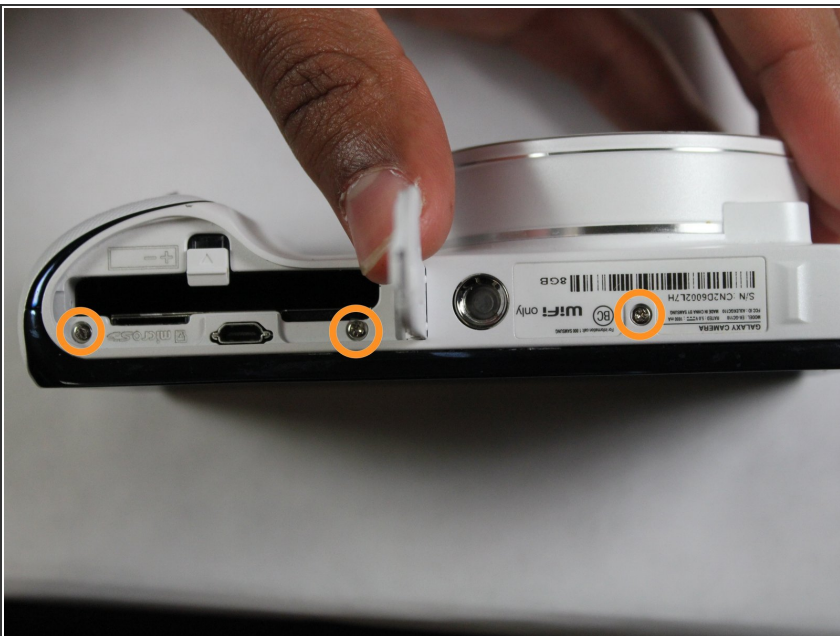
- [Phillips #0 Screwdriver](#) (1)
 - [iFixit Opening Tools](#) (1)
-

Step 1 — Screen



- Begin removing the 3/16" screws for the device.

Step 2



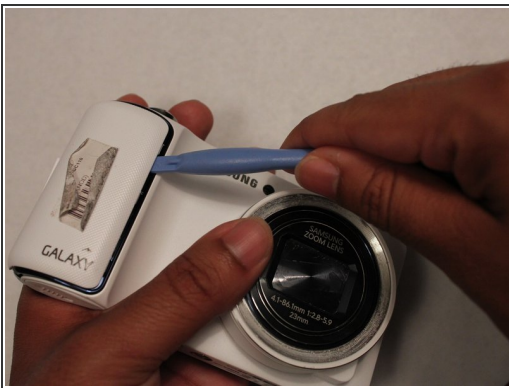
- Turn the device and remove the additional 3/16" screws.

Step 3



- Turn the device and remove the additional 3/16" screw.

Step 4



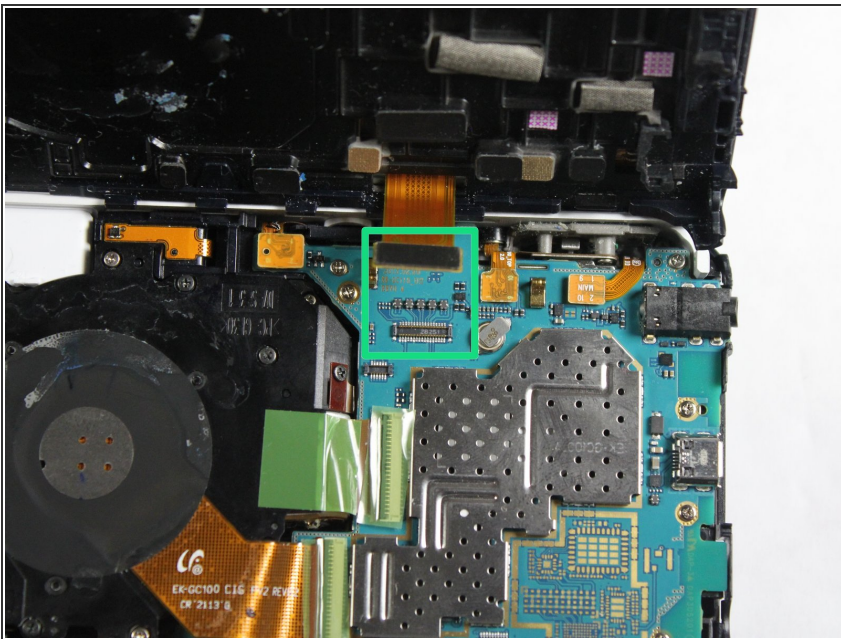
- Take the white cover plate off.

Step 5



- Using the plastic opening tools, pry open the camera from the bottom.
- ⓘ This may require a moderate use of force because of the sealing glue.

Step 6



- Gently pull the connector away from the motherboard.

To reassemble your device, follow these instructions in reverse order.