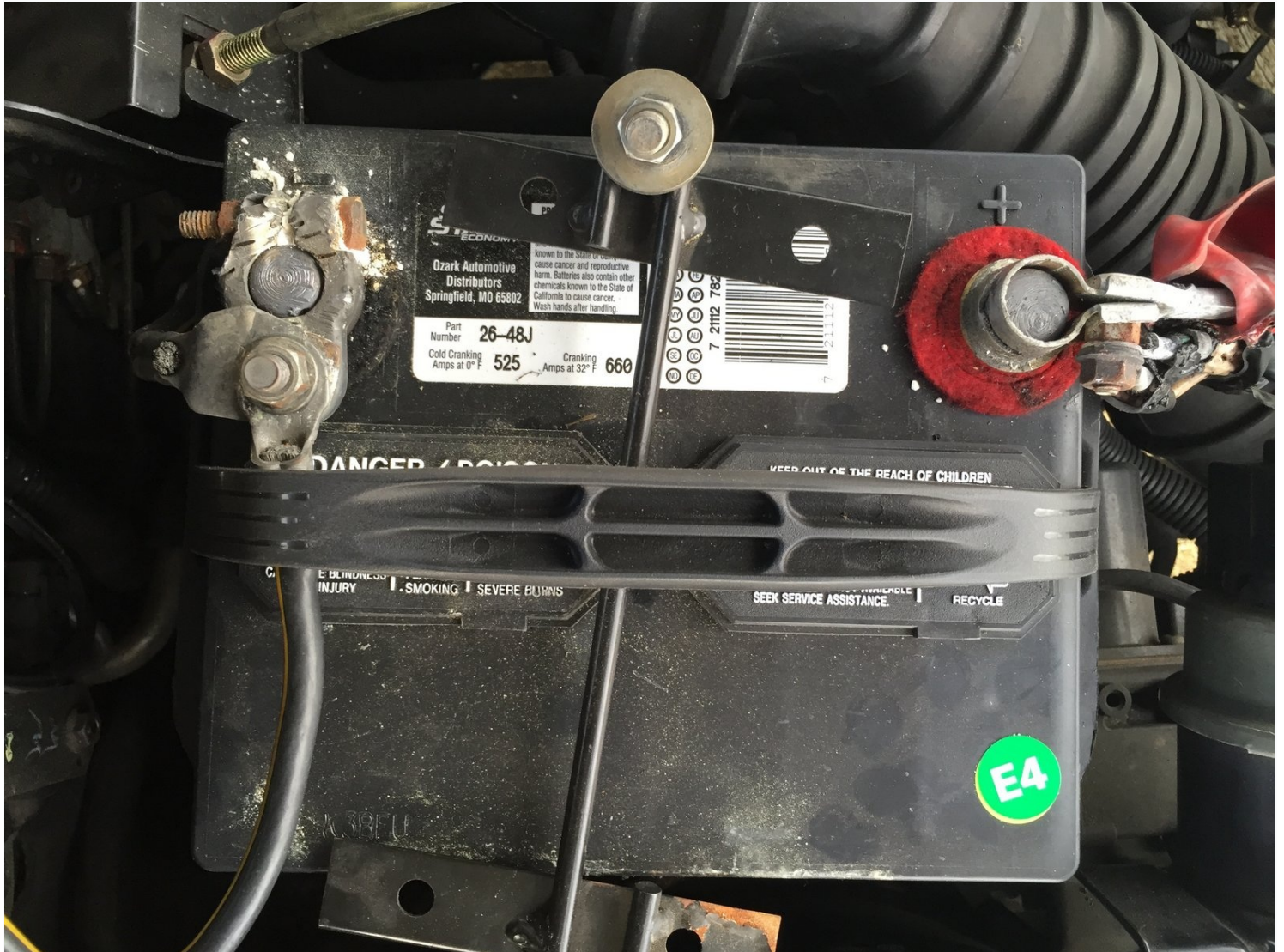




How to Replace a Corroded Car Battery Terminal

Is your car having trouble starting? Is there...

Written By: David Wright



INTRODUCTION

Is your car having trouble starting? Is there corrosion build-up on your terminals, preventing a proper connection? This handy guide will help you remove the troublesome terminal and replace it with a brand new one.

Warning: It is dangerous to work on a vehicle battery. Exercise extreme caution when following this guide.

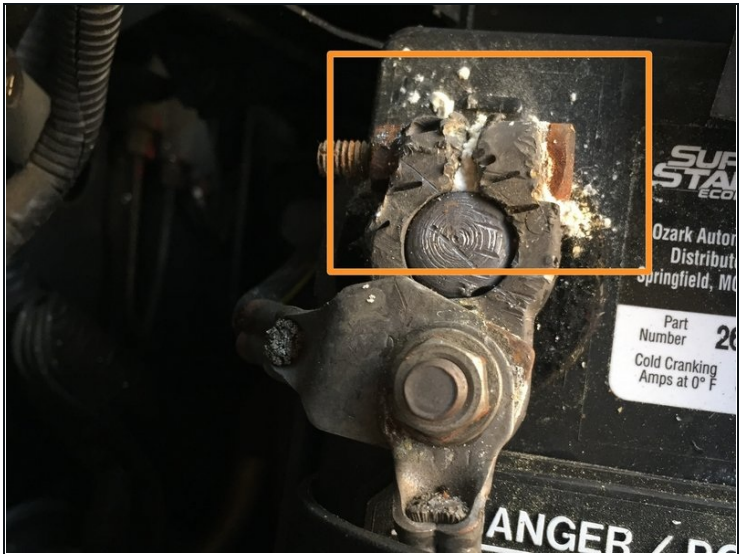
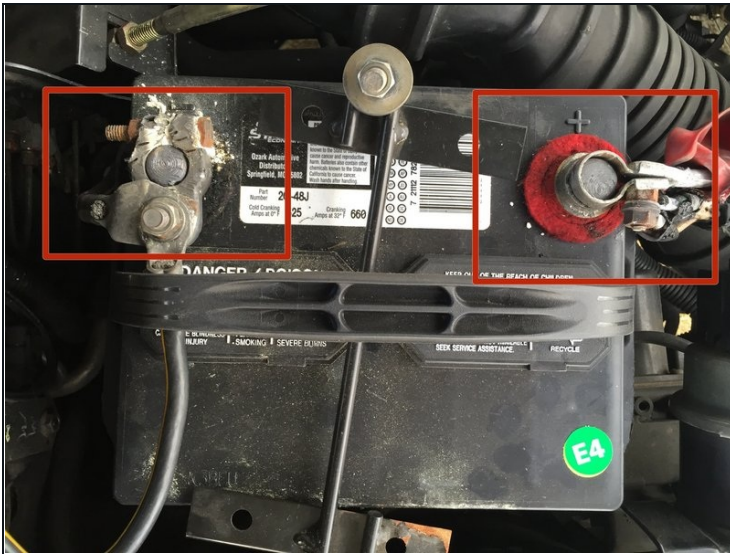
🔧 TOOLS:

Shop Towels or Rags (1)
Adjustable Wrench (1)

⚙️ PARTS:

Car Battery Terminal (1)

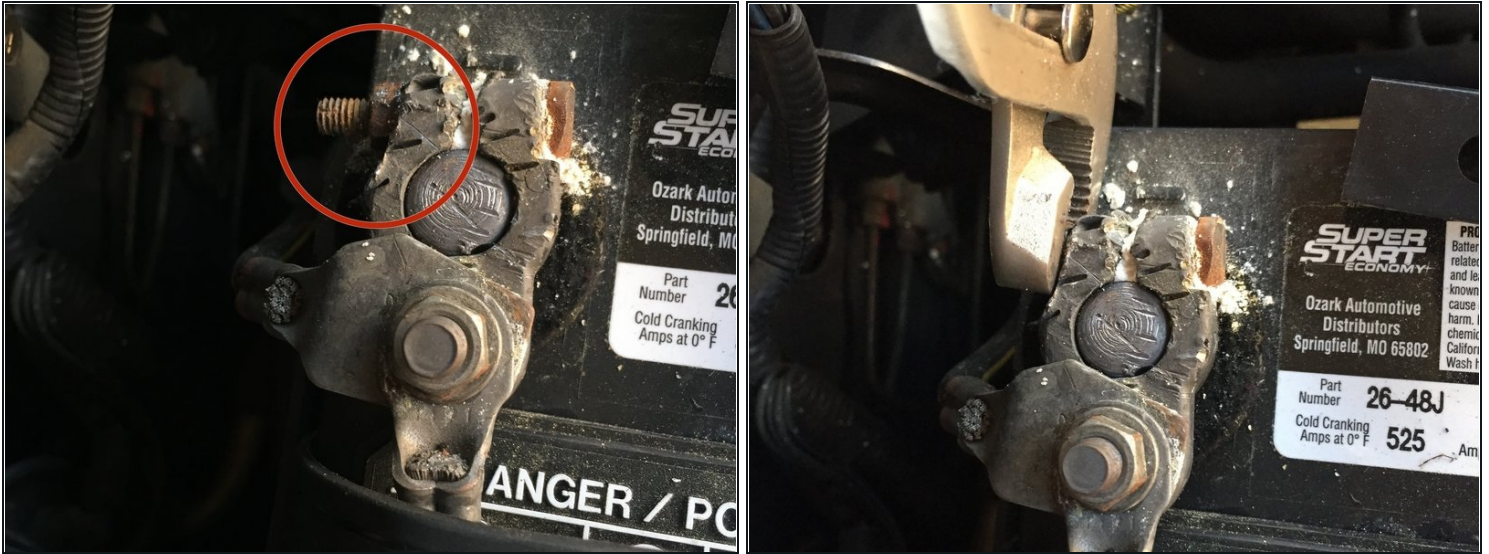
Step 1 — Car Battery Terminal



⚠️ Remember to remove your car key from the ignition and shut off the car before performing this guide.

- Locate the terminals on the top of the car battery. Next to each terminal is a positive(+) or negative(-) sign, indicating the charge.
- The positive terminal looks to be in working order, but the negative end has a lot of corrosion buildup. This terminal needs to be replaced.

Step 2



- Find the nut located on the side of the terminal.
- Using an adjustable wrench, rotate the nut counterclockwise to loosen it.
 - ① Use an appropriately-sized wrench or socket, not channel locks as shown in the photo.
 - ① You do not need to loosen the nut all the way off the bolt, but just enough to loosen the terminal's grip on the node.

Step 3



- ⚠ **Always remember to remove the negative terminal first before the positive terminal.** This will prevent shorting to the ground and possibly causing shock or a fire.
- Carefully use a rag to lift up the terminal off of the battery node.
- ⚠ Be cautious when handling battery corrosion, as it can irritate the skin and is harmful if it comes in contact with your eyes.
- Place the terminal on a rag or towel and **make sure it doesn't come in contact with the battery node.**

Step 4



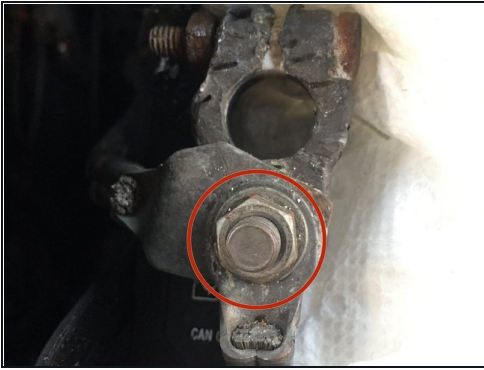
- On the positive terminal, locate the nut along the side.
- Using the wrench, rotate the nut counterclockwise.
 - ❗ You do not need to fully loosen the nut off the bolt, but just enough for the terminal to be easily removed from the node.

Step 5



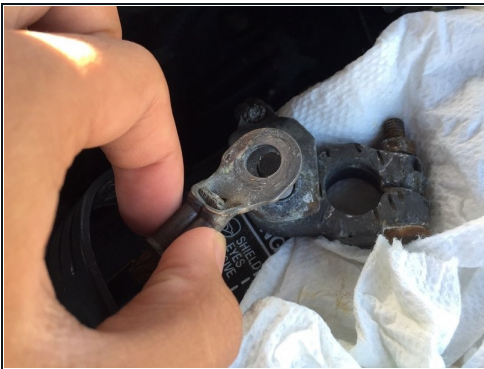
- Using a rag, carefully remove the positive terminal from the battery node.
- Place the terminal on a rag or towel, and make sure it does not come into contact with the battery node.

Step 6



- On the negative terminal, locate the nut on the side facing upwards.
- Using the wrench, rotate the nut counterclockwise and remove it from the bolt.

Step 7



- Take the wire plate on top and remove it carefully from the bolt.
- At this point, it is fine to handle the metal plate with your hands since the terminals are disconnected from the battery and there is nothing completing the circuit.
- Remove the bottom wire plate from the bolt, placing it carefully to the side.

Step 8



- Set aside the old battery terminal, and replace it with the new one.
- Replace the wire plates in the order they were taken off.
 - Although it is not necessary that the plates be placed in the same order again, it is generally a good idea to go with the order that it came in.

Step 9



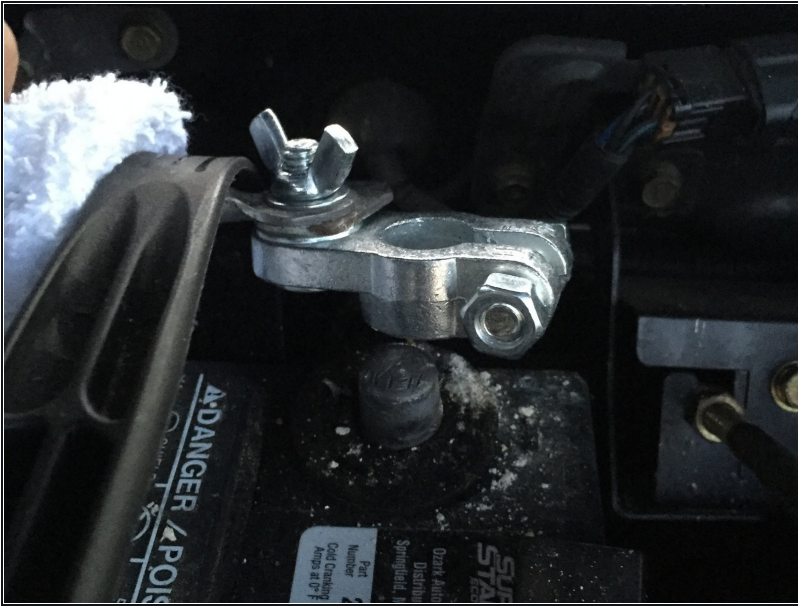
- Place the flat washer and the screw-on head that came with the battery terminal onto the vertical bolt.
- Tighten the head clockwise and make sure the wire plates are secured.
 - ① Not all battery terminal packs come with a washer and screw-on head. If your pack comes with a nut, use the wrench and tighten the bolt clockwise.

Step 10



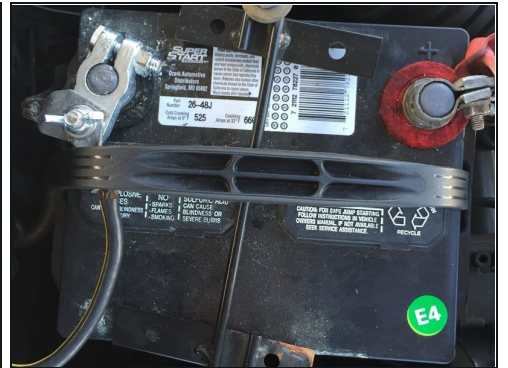
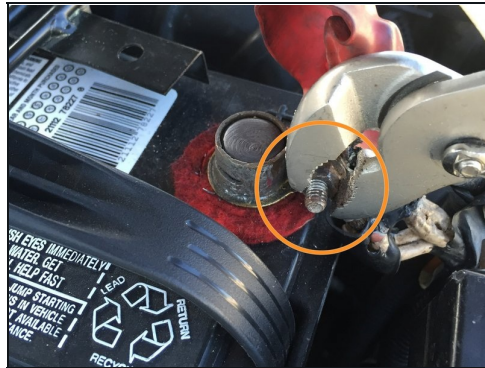
- Using a rag, place the positive terminal back onto the positive node.

Step 11



- Place the negative terminal back onto the negative node.

Step 12



- On the negative terminal, use the wrench to rotate the side nut clockwise to tighten it.
- Next, perform the same action on the side nut of the positive terminal.
 - ① To ensure a secure connection, be sure the nut is snug and that the terminal can't come off easily.