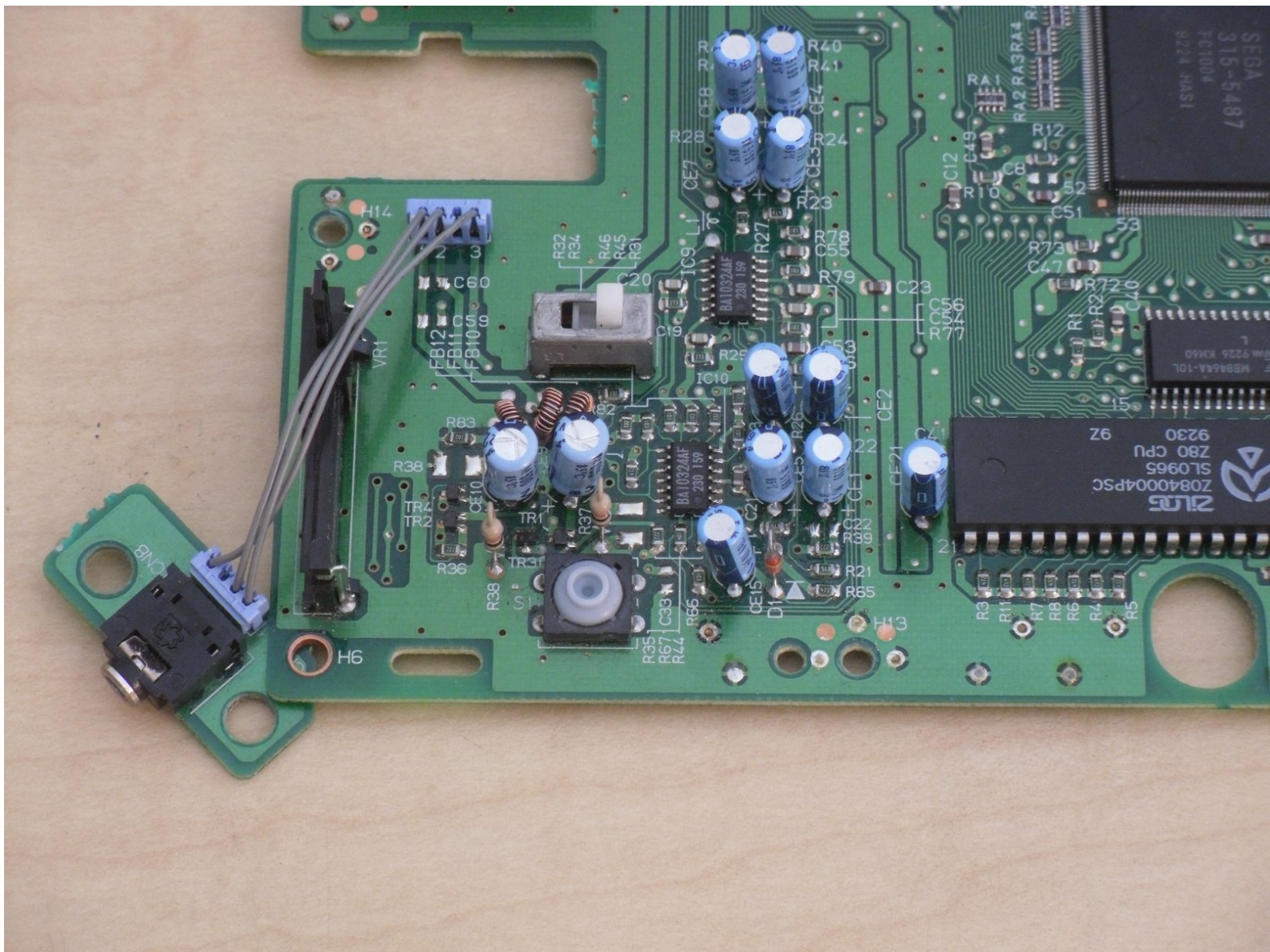




Sega Genesis Reset Button Repair

This guide will show you how to replace the reset button on the Sega Genesis.

Written By: calvin



INTRODUCTION

We all know that the Sega Genesis brought to us many hours of fun, but, as we get older, the reset button gets older too.

Today, let's lend a hand to our nice friend and replace its reset button!



TOOLS:

- [Phillips #1 Screwdriver](#) (1)
-

Step 1 — Outer Case



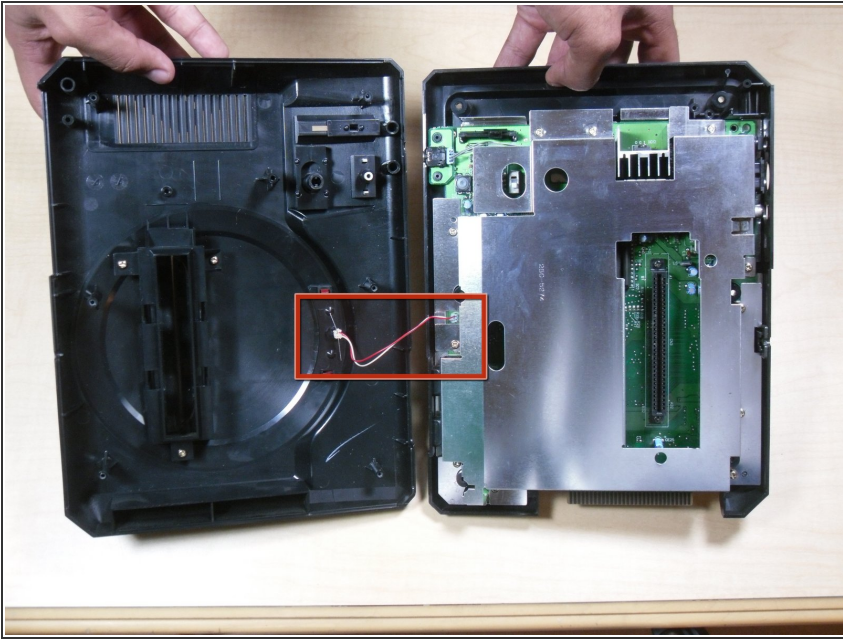
- Remove the six screws from the underside of the console with a Phillips #1 screwdriver.

Step 2



- Flip the Sega Genesis upright.

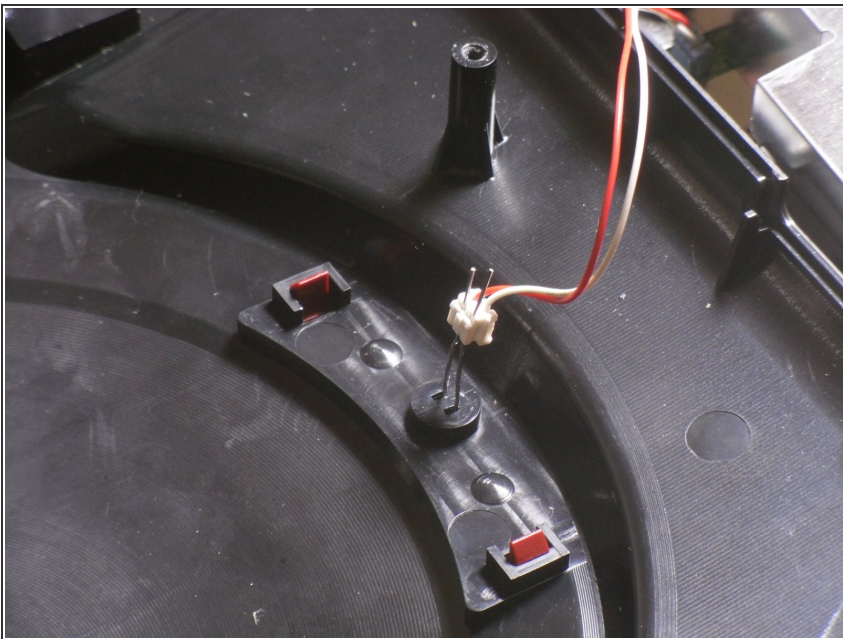
Step 3



- Gently lift the top casing.

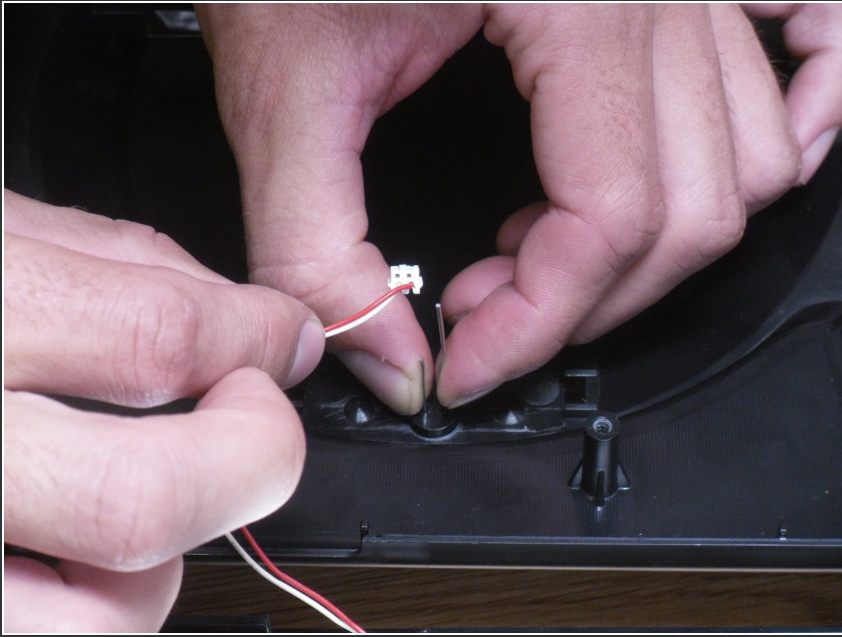
⚠ Note: the case will be connected to the main board by LED wires.

Step 4




- Bend out the LED leads into vertical positions.

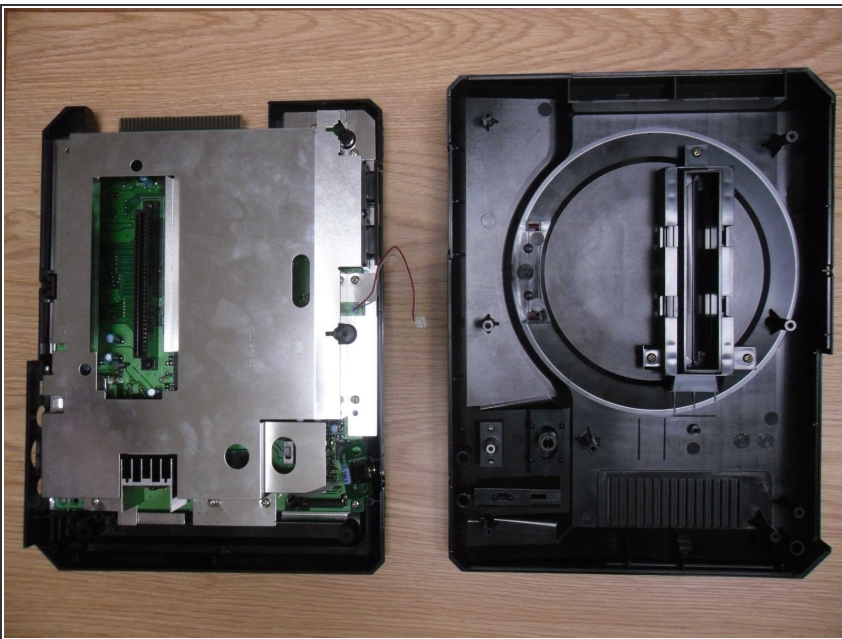
Step 5



- Slide the LED wire apparatus off the lead pins.

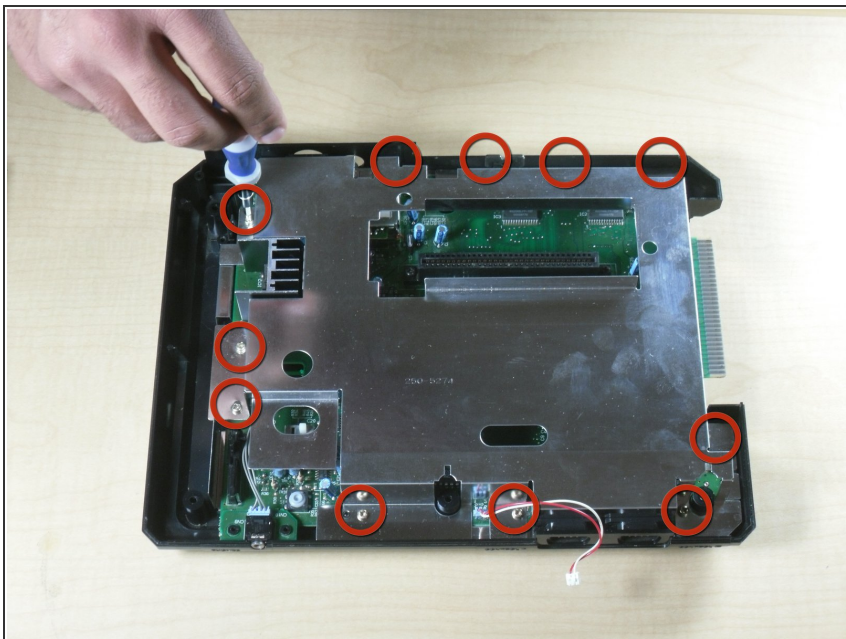
 **Note: observe which color wire corresponds with which length of pin.**

Step 6



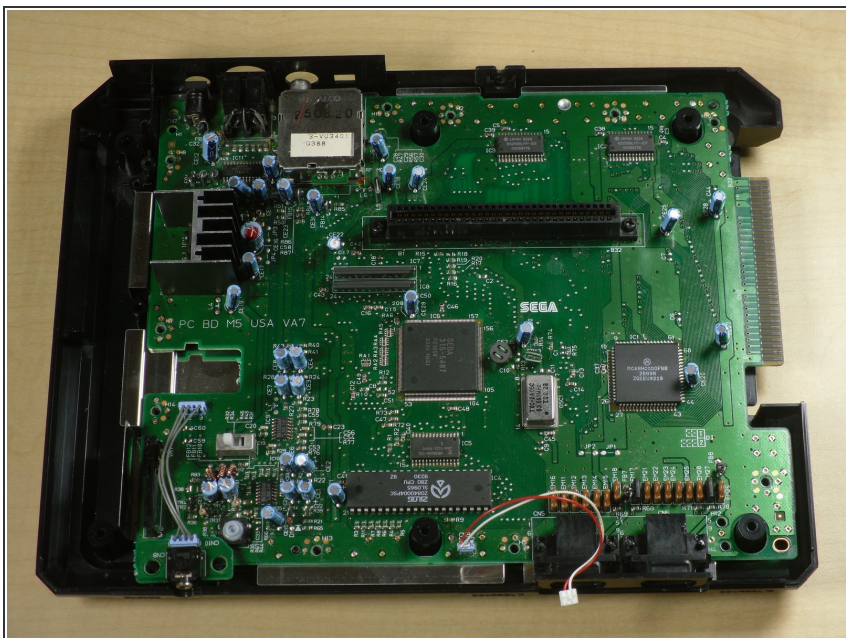
- Separate the main board from the outer case.

Step 7 — Sega Genesis Reset Button Repair



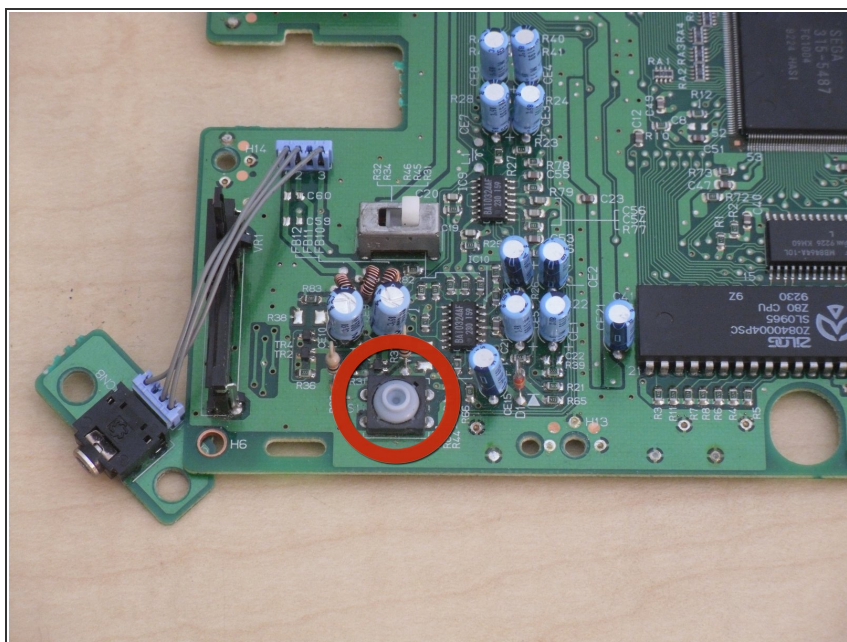
- Using Philips screwdriver, remove 11 screws securing silver casing.

Step 8



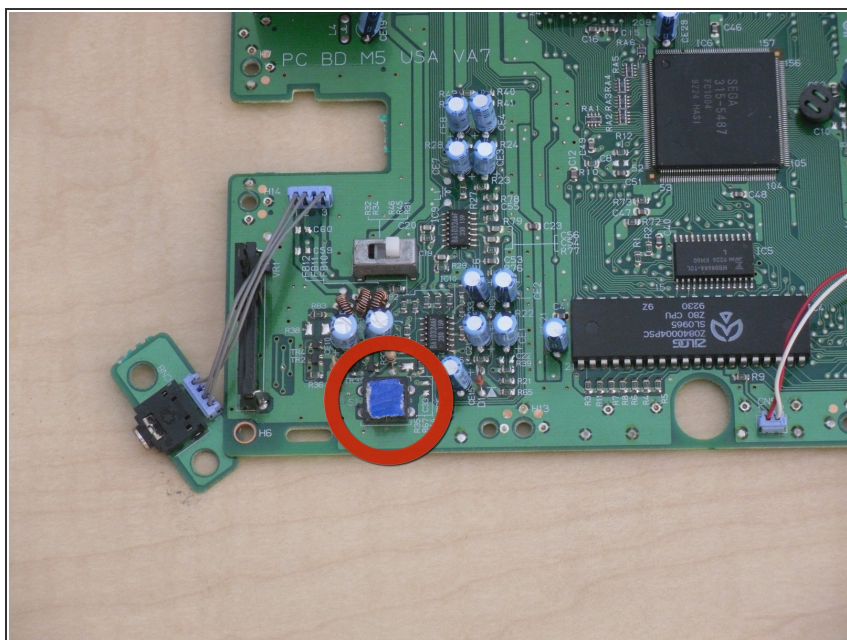
- Remove silver case.

Step 9



- Locate reset button on motherboard

Step 10



- Place three pieces of 1cm x 1cm masking tape over reset button.

To reassemble your device, follow these instructions in reverse order. And the most important, be happy!