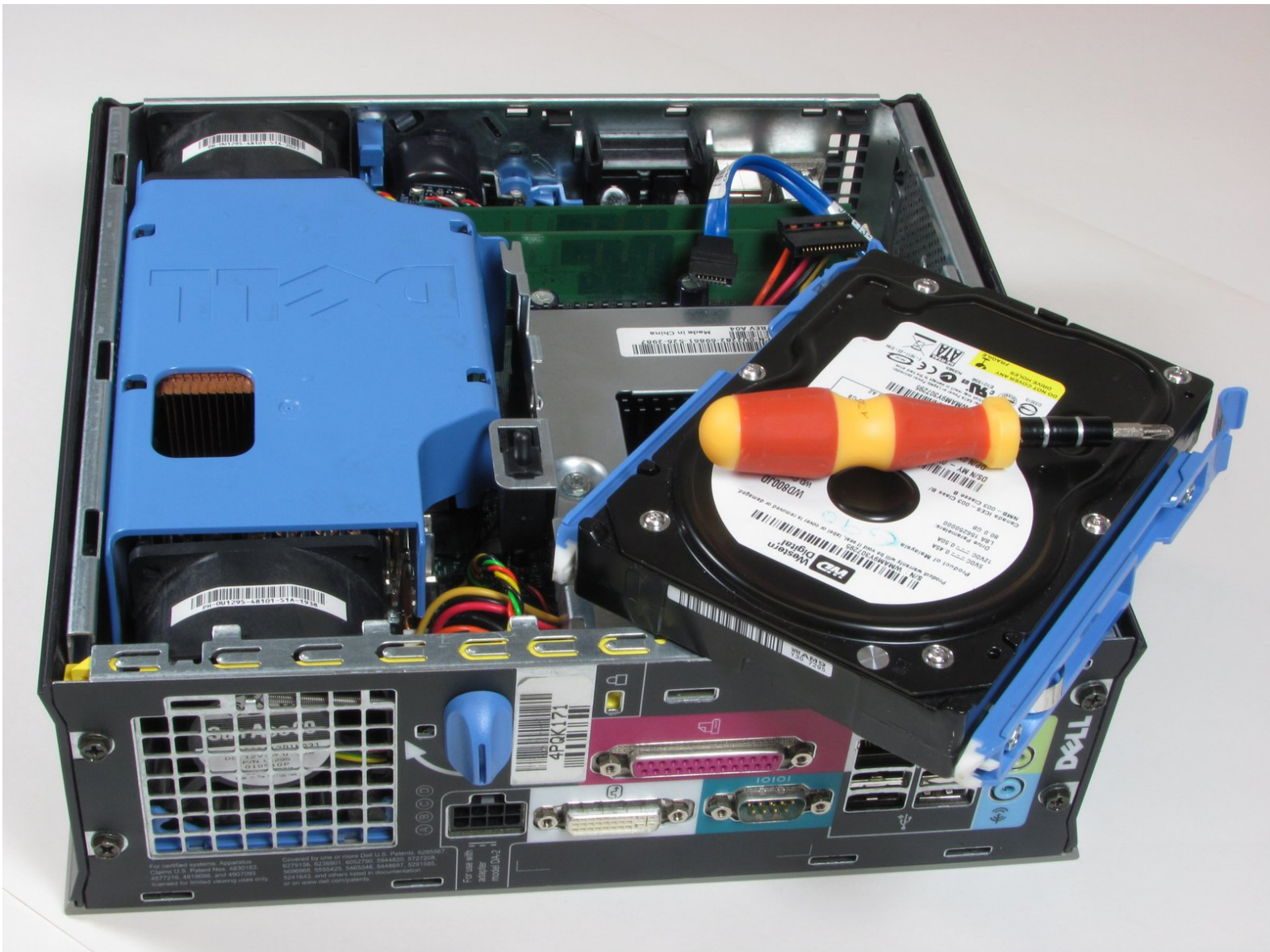




Dell Optiplex SX280 Hard Drive Replacement

Disassembled Hard Drive

Written By: Wyatt



INTRODUCTION

Remove and Replace the Hard Drive

The image shows the rear of a Dell server chassis. The top surface is a dark grey metal plate with the 'DELL' logo embossed in the center. The rear panel is black and features a variety of ports and components. On the left, there is a large blue circular handle for a sliding door that covers a grid of ports. Below this handle is a small blue label with the text 'SERIAL' and 'LPT'. To the right of the handle is a barcode and a small white label with the text '4P-222'. Further right, there are several ports: a pink SATA port, a blue DVI port, a green VGA port, a black Ethernet port, and a green USB port. The Dell logo is visible on the bottom right of the rear panel. The server is placed on a light-colored surface.

- ⚠ Make sure the computer is turned off, by selecting the start menu and choosing “Shut Down”.
- ⚠ Ensure all cables, speakers and other devices are unplugged and turned off before opening the computer case.



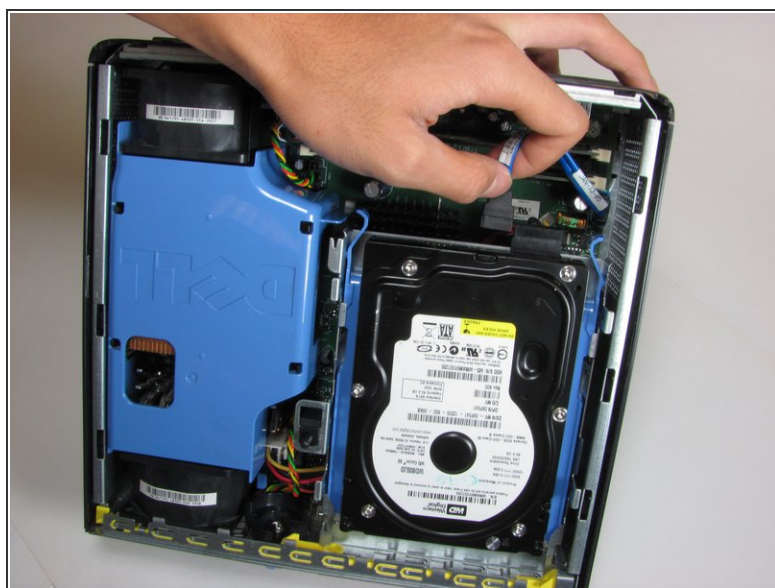
- Lay the computer on its side; you will see a blue knob.
- Turn this knob 90 deg clockwise.

Step 3



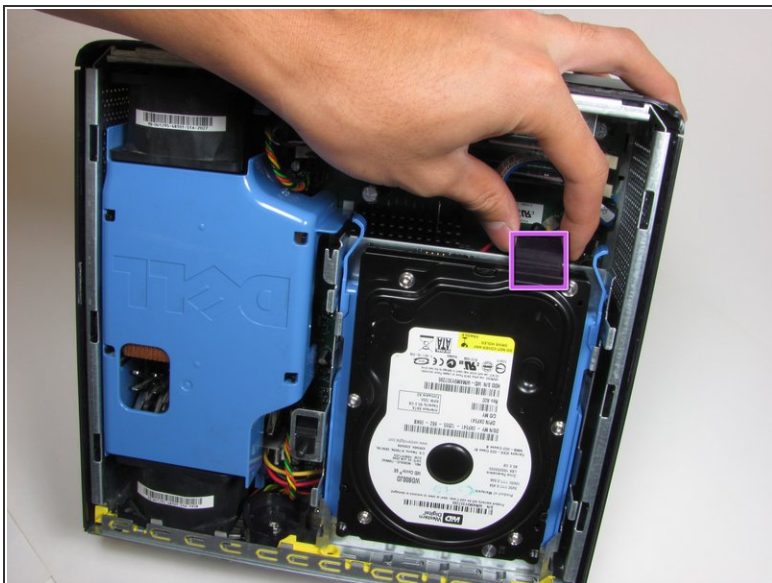
- Slide the panel case forward about 1/2 inch while knob is turned.
- Lift panel case off computer.

Step 4 — Hard Drive



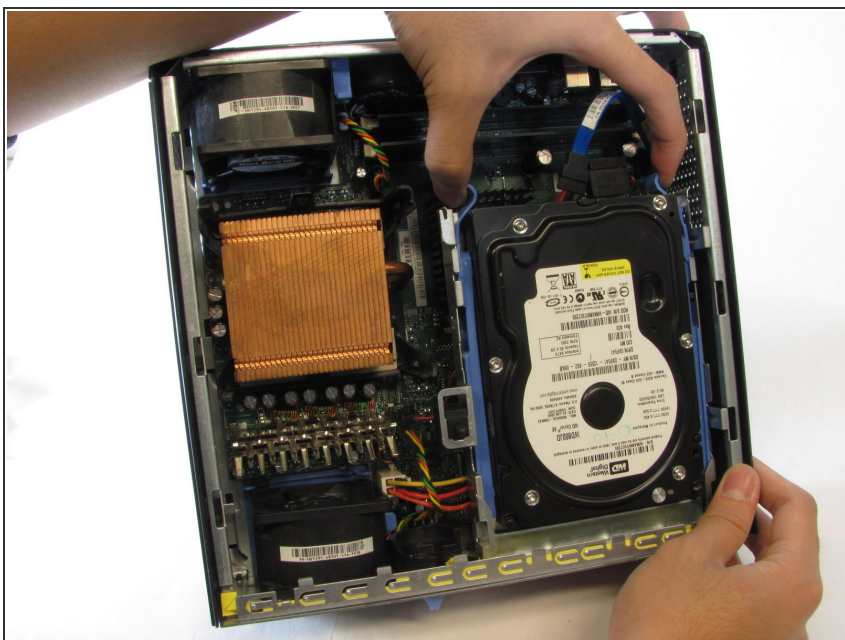
- Unplug the blue cable that connects the hard drive to the motherboard.

Step 5



- Unplug the power supply, distinguished by its red and yellow wires (yellow wire obscured from view).

Step 6



- Squeeze the release tabs on either side of the hard drive.

Step 7



- Slide the Hard Drive out while squeezing the tabs.

To reassemble your device, follow these instructions in reverse order.