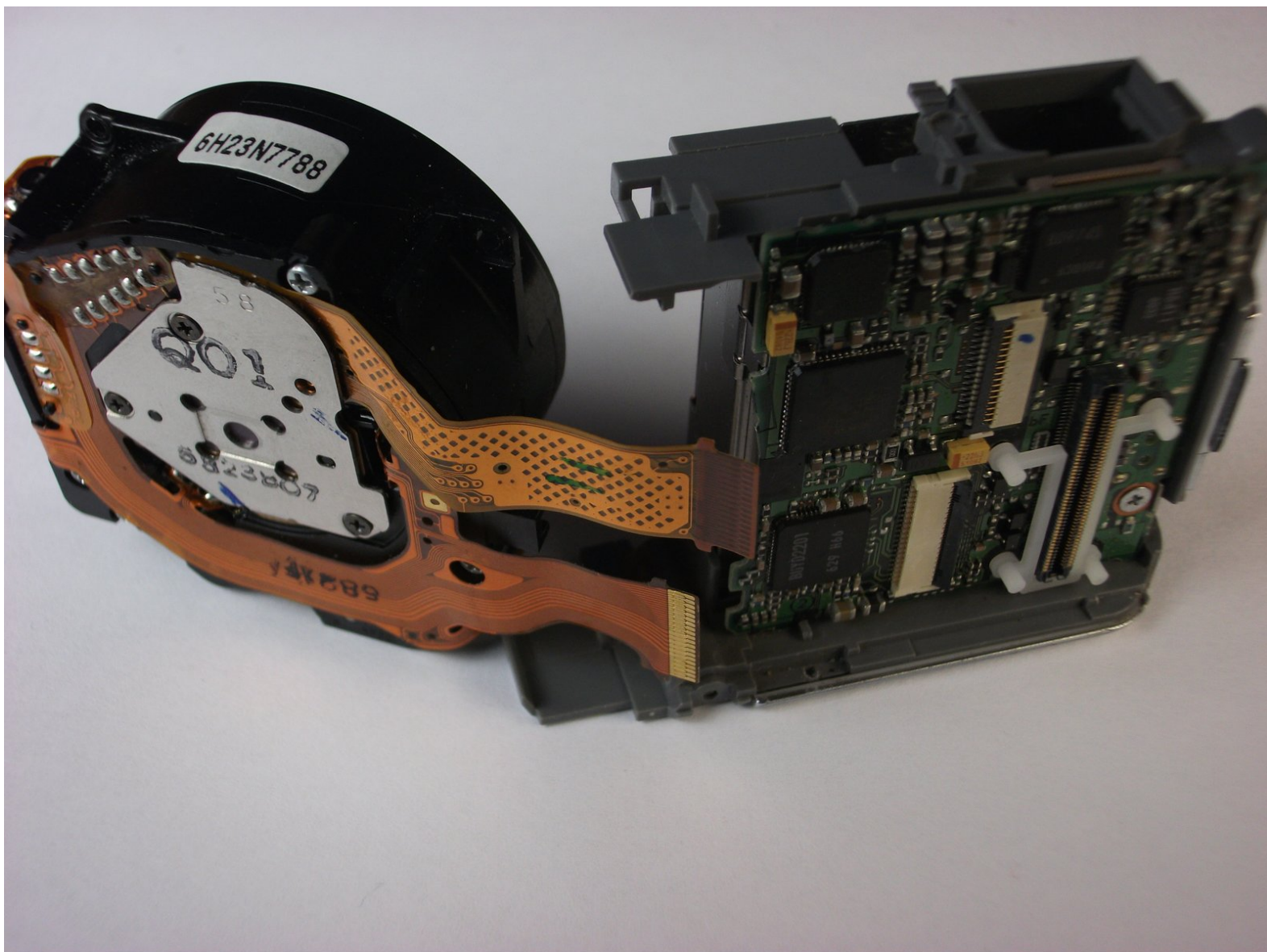




Panasonic Lumix DMC-FX01 Lens Assembly Replacement

This guide will be useful for anyone who wants...

Written By: Steven



INTRODUCTION

This guide will be useful for anyone who wants to replace a broken or damaged Panasonic Lumix DMC-FX01 lens assembly.

TOOLS:

- [Phillips #00 Screwdriver](#) (1)
-

Step 1 — Battery



- Locate the memory card and battery card latch on the bottom of the camera.
- Slide the latch to the open position.

Step 2



- Open the battery latch, and slide the battery release lever to the right.

Step 3



- Remove the battery from the camera.

Step 4 — Rear Casing



- Remove the three 4.6 mm screws on the bottom of the camera using a Phillips #00 screwdriver.

Step 5



- Remove the single 3.2 mm screw on the left side of the camera using a Phillips #00 screwdriver.

Step 6



- Remove the left side casing.

Step 7



- Remove the two 3.2 mm screws on the right side of the camera using a Phillips #00 screwdriver.

Step 8



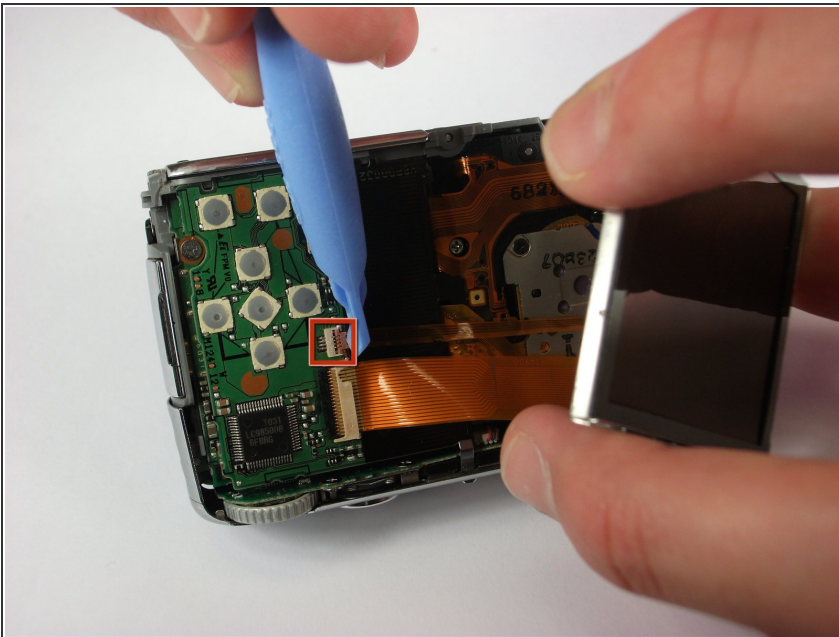
- Remove the bottom right panel.

Step 9



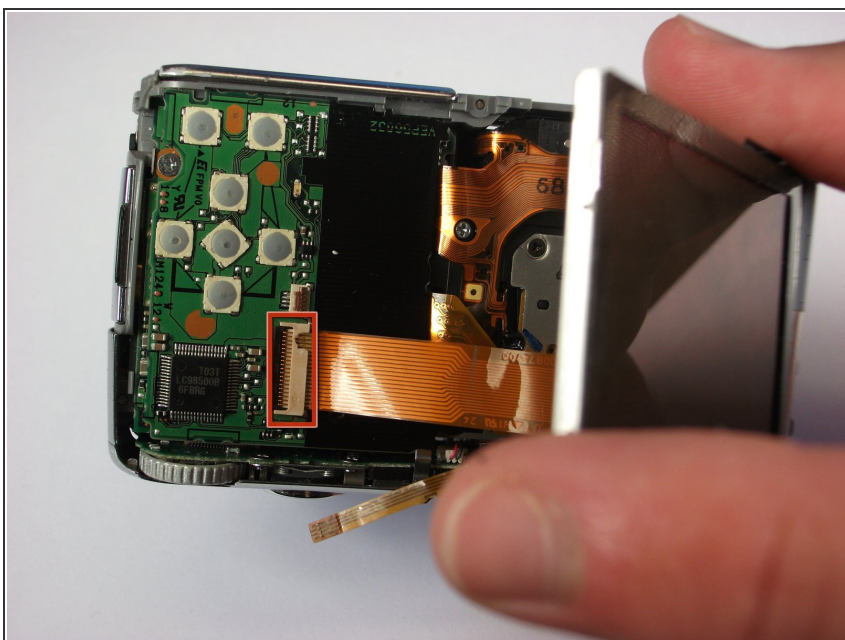
- Gently remove the back casing.
- Start at the bottom and carefully pry towards the top to get this piece free.

Step 10 — LCD Screen



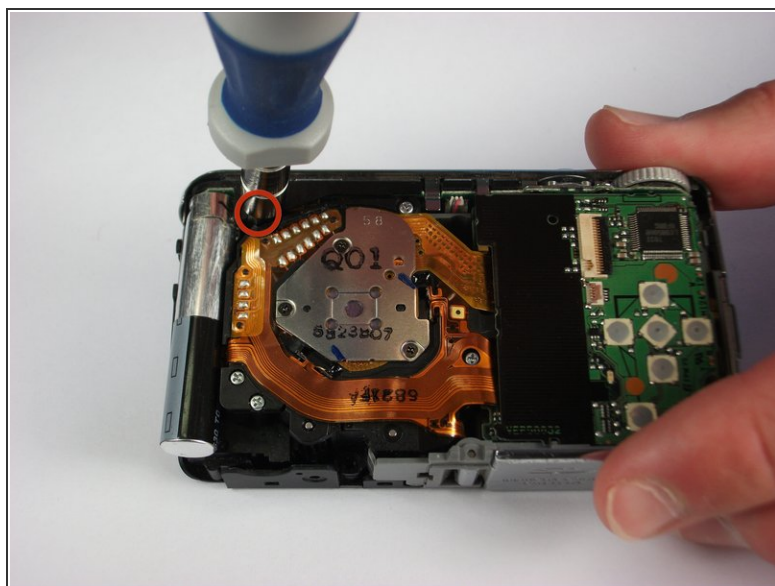
- Gently lift up the LCD screen.
- Using a plastic prying tool, flip up the latch that holds the thin ribbon in place.
- It should fall out on its own or with a gentle tug.

Step 11




- Gently tug the thicker ribbon to remove it from its housing.

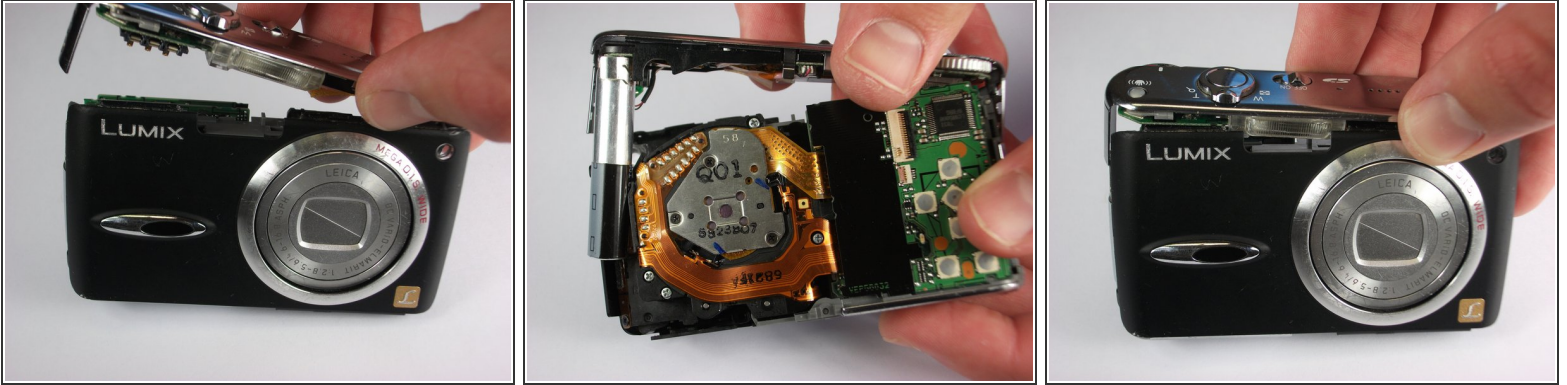
Step 12 — Front Casing



- Remove the two black 5.4 mm screws that hold in the front faceplate using a Phillips #00 screwdriver.

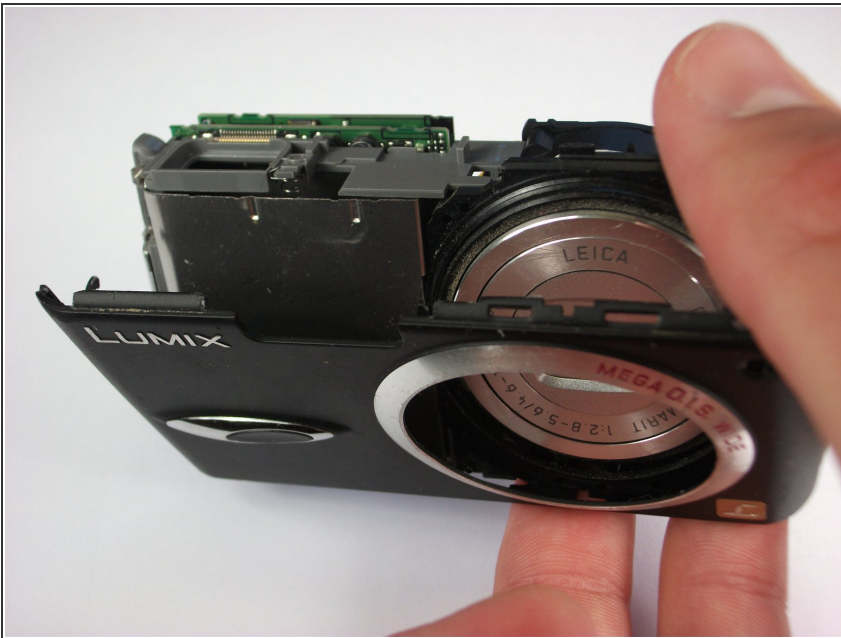
 There may be a third screw the the right of the lens assembly.

Step 13



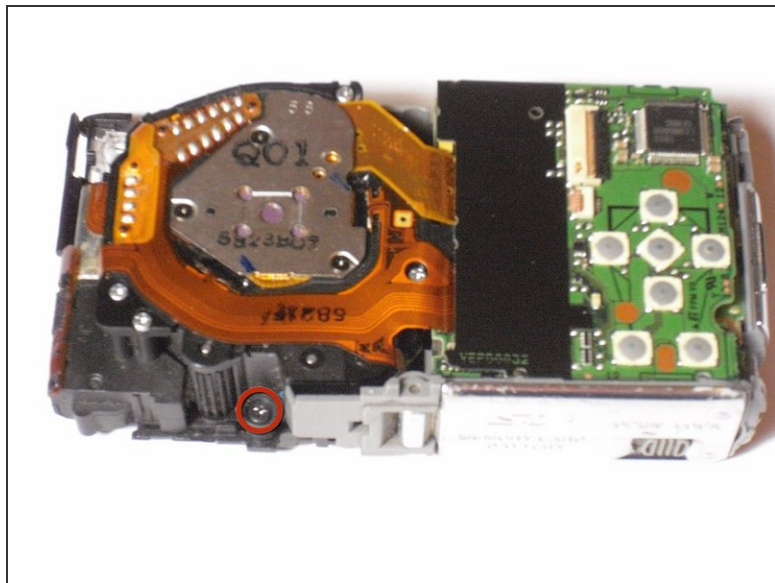
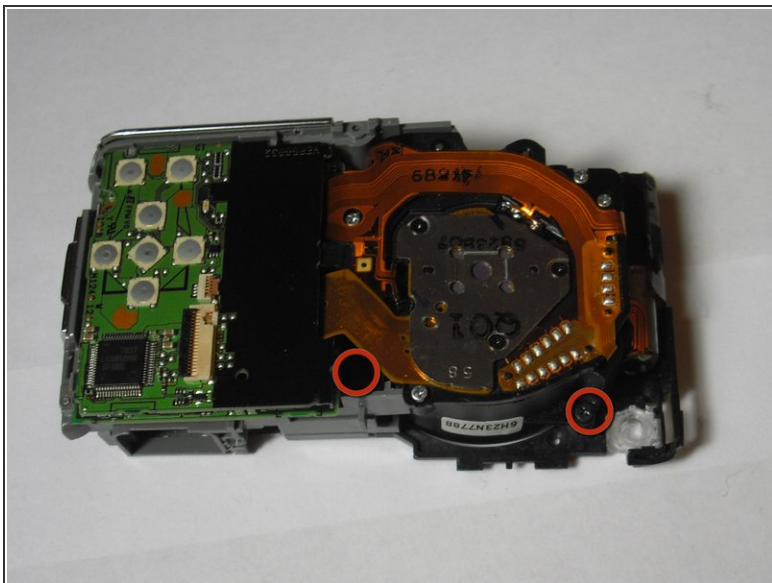
- Carefully remove the upper assembly, which houses the buttons and the flash battery.

Step 14



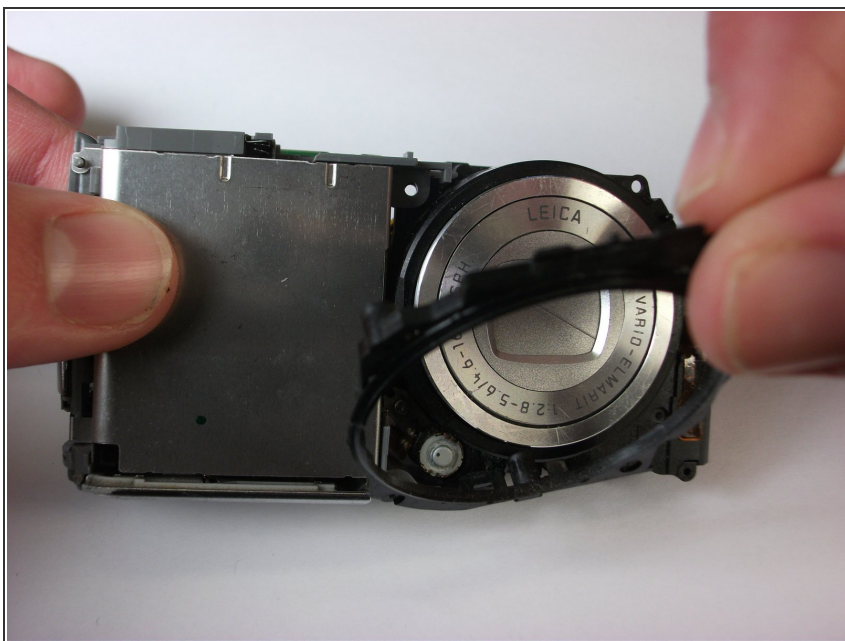
- Carefully remove the front casing after verifying that the thin plastic around the lens is not still attached.

Step 15 — Lens Assembly



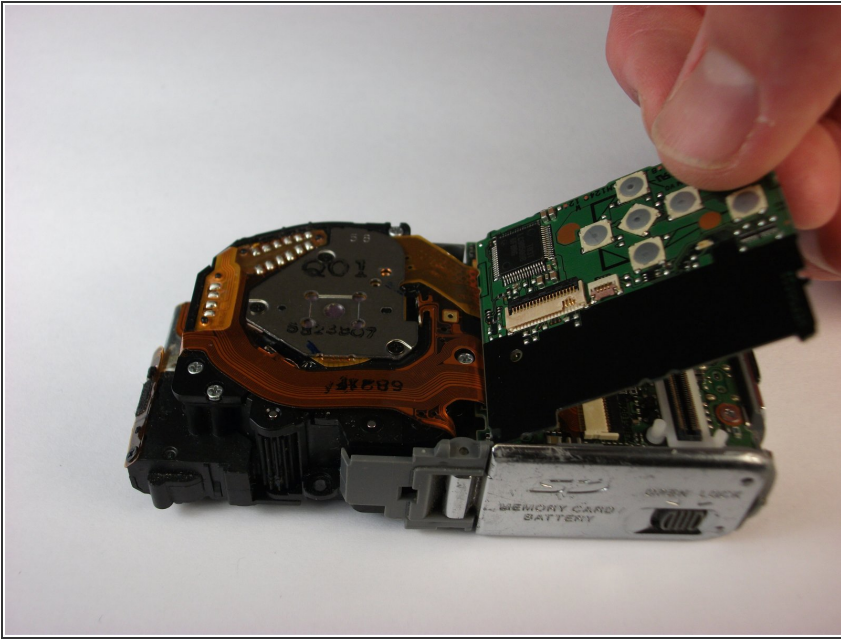
- Remove the three black 5mm screws attached to the lens frame.

Step 16



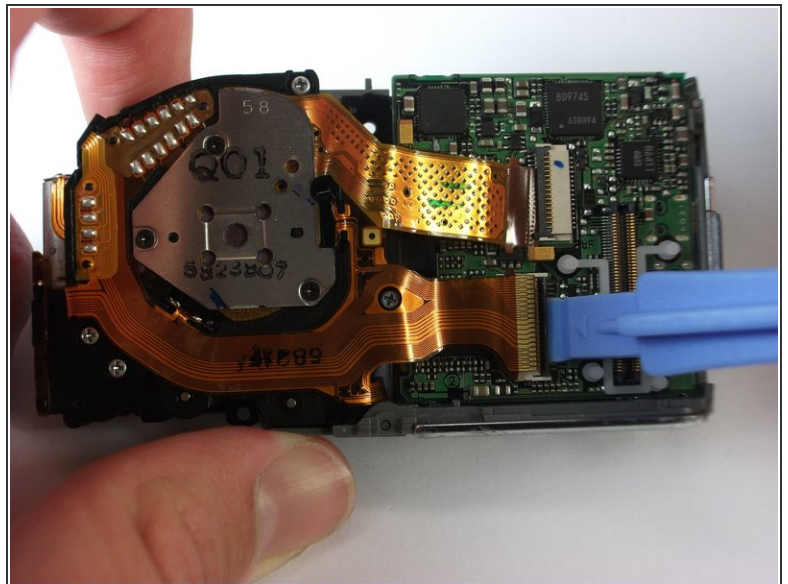
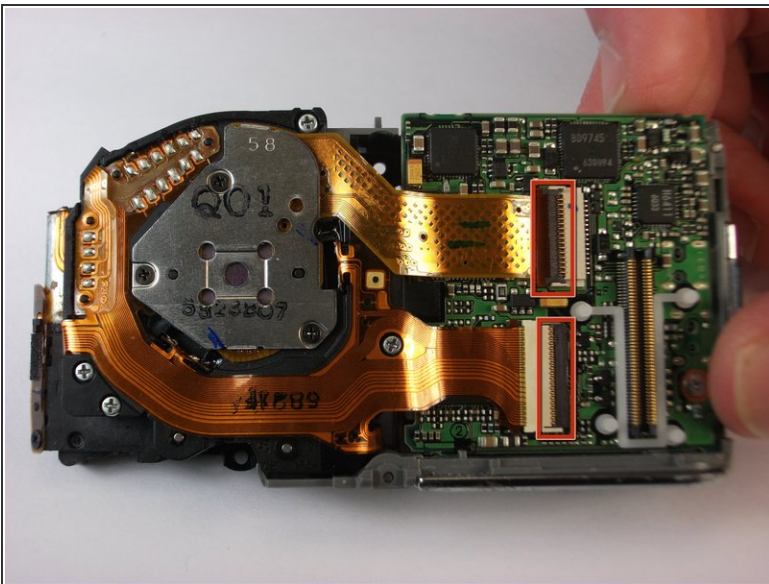
- Remove the lens frame.

Step 17



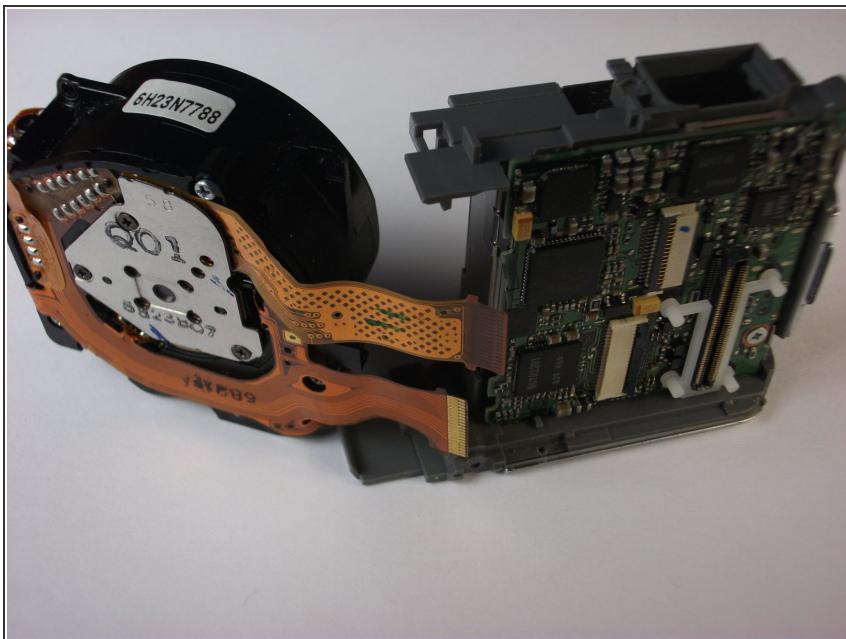
- Lift out the circuit board as shown.

Step 18



- Lift the two black latches that hold the connector ribbons in place.
- Disconnect the two ribbons.

Step 19



- Remove the lens assembly as shown.

To reassemble your device, follow these instructions in reverse order.