



# Panasonic Lumix DMC-FX01 Flash Top Assembly Replacement

This guide will show the user how to...

Written By: Caleb Fink



---

## INTRODUCTION

This guide will show the user how to disassemble the camera to reach the Flash Top Assembly. Once the Flash Top Assembly is reached, the user can replace it.

---



### TOOLS:

- [Phillips #00 Screwdriver](#) (1)
-

## Step 1 — Battery



- Locate the memory card and battery card latch on the bottom of the camera.
- Slide the latch to the open position.

## Step 2



- Open the battery latch, and slide the battery release lever to the right.

### Step 3



- Remove the battery from the camera.

### Step 4 — Rear Casing



- Remove the three 4.6 mm screws on the bottom of the camera using a Phillips #00 screwdriver.



## Step 5



- Remove the single 3.2 mm screw on the left side of the camera using a Phillips #00 screwdriver.

## Step 6



- Remove the left side casing.

## Step 7



- Remove the two 3.2 mm screws on the right side of the camera using a Phillips #00 screwdriver.

## Step 8



- Remove the bottom right panel.

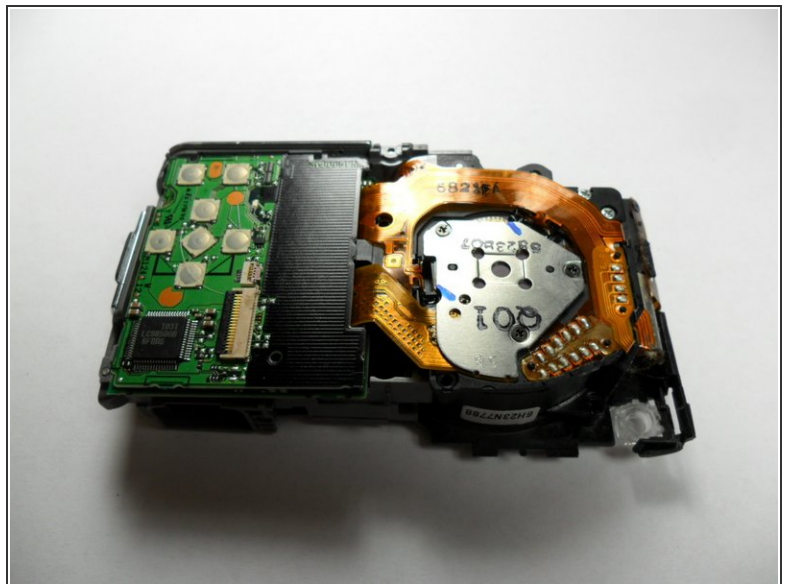
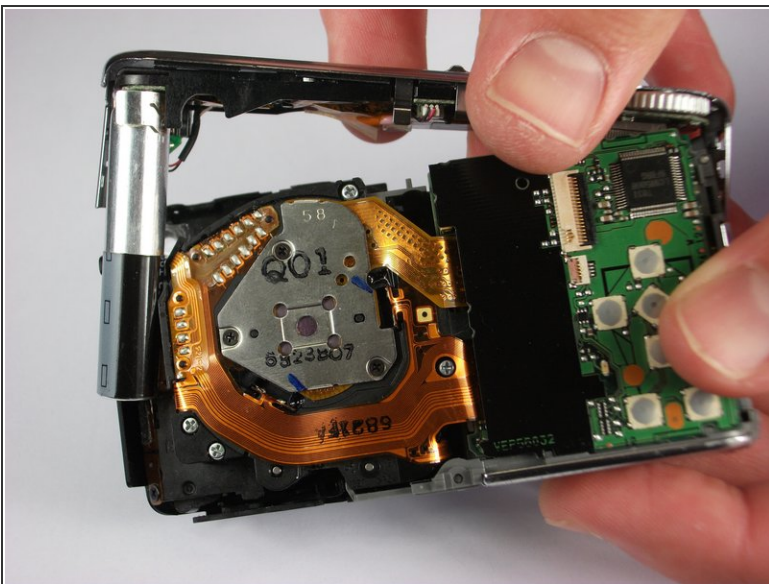


## Step 9



- Gently remove the back casing.
- Start at the bottom and carefully pry towards the top to get this piece free.

## Step 10 — Flash Top Assembly



- Carefully pry the Flash Top Assembly away from the top.

## Step 11



- Replace the Flash Top Assembly with a new one.

To reassemble your device, follow these instructions in reverse order.