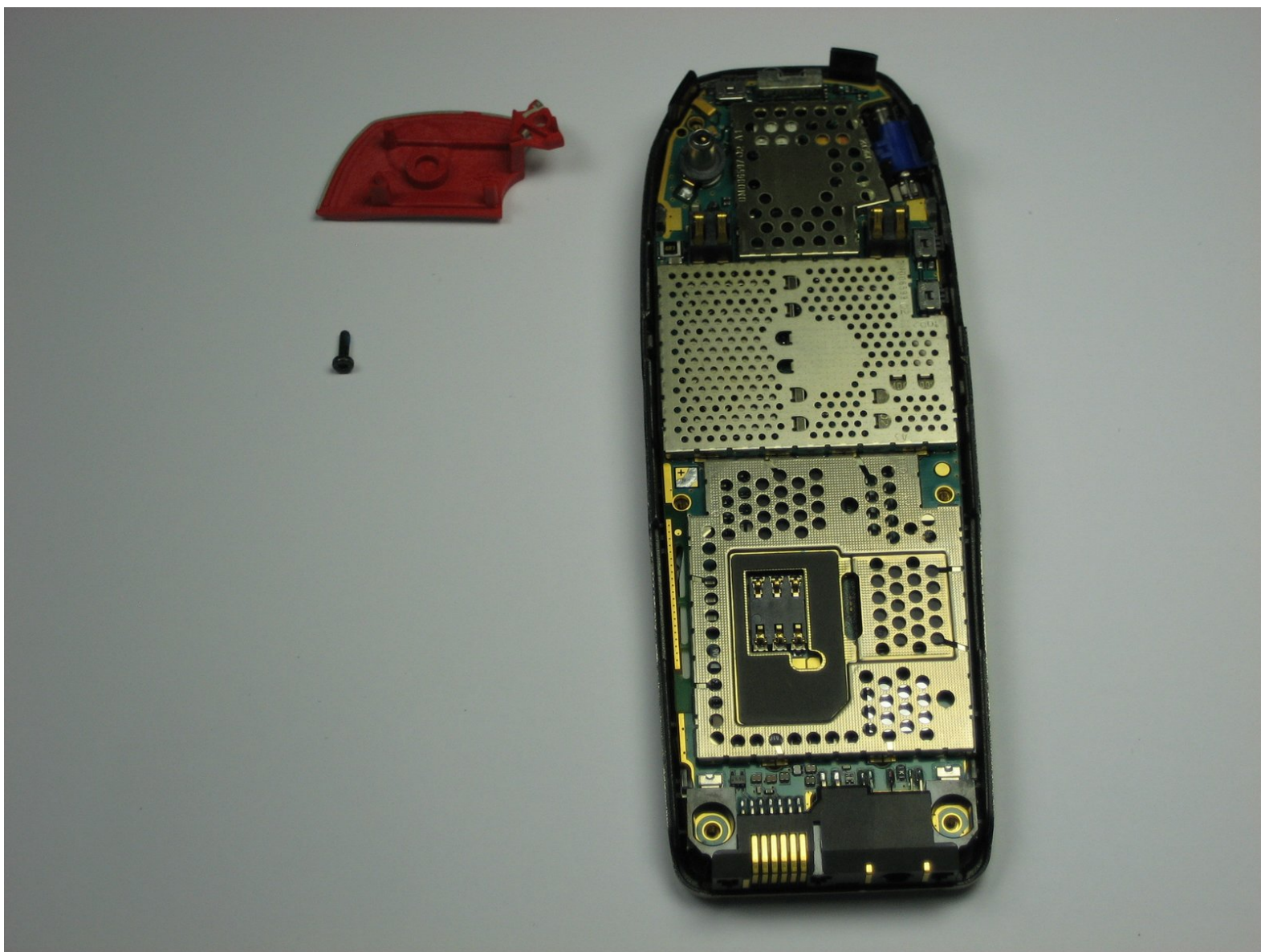




Nokia 6310i Antenna Replacement

If you are experiencing reception and or signal issues. You may need an antenna replacement.
This guide is a walk-through on how to replace the internal antenna.

Written By: Wilson Tam



INTRODUCTION

This guide is to instruct the reader about the steps on replacing the internal antenna. The phone will have to be disassembled to reach to the antenna. A proper set of Torx (Star) screw-driver is necessary to complete the procedures.



TOOLS:

- [iFixit Opening Tools](#) (1)
 - [T6 Torx Screwdriver](#) (1)
-

Step 1 — Battery




- Press and hold the battery release button and slide the battery away from the Nokia logo

Step 2 — SIM card



- Slide the SIM card lock away from the SIM card.

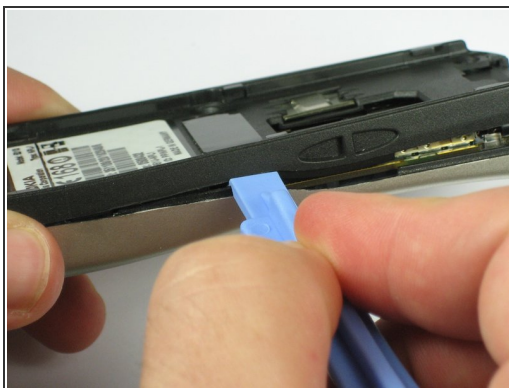
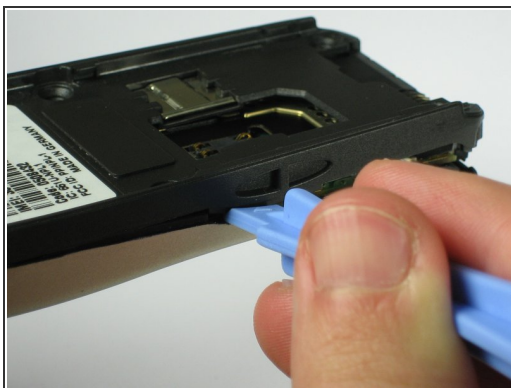
 The SIM card pops out. Remove the SIM card.

Step 3 — Back Cover



- Unscrew and remove the four T6 Torx screws.

Step 4



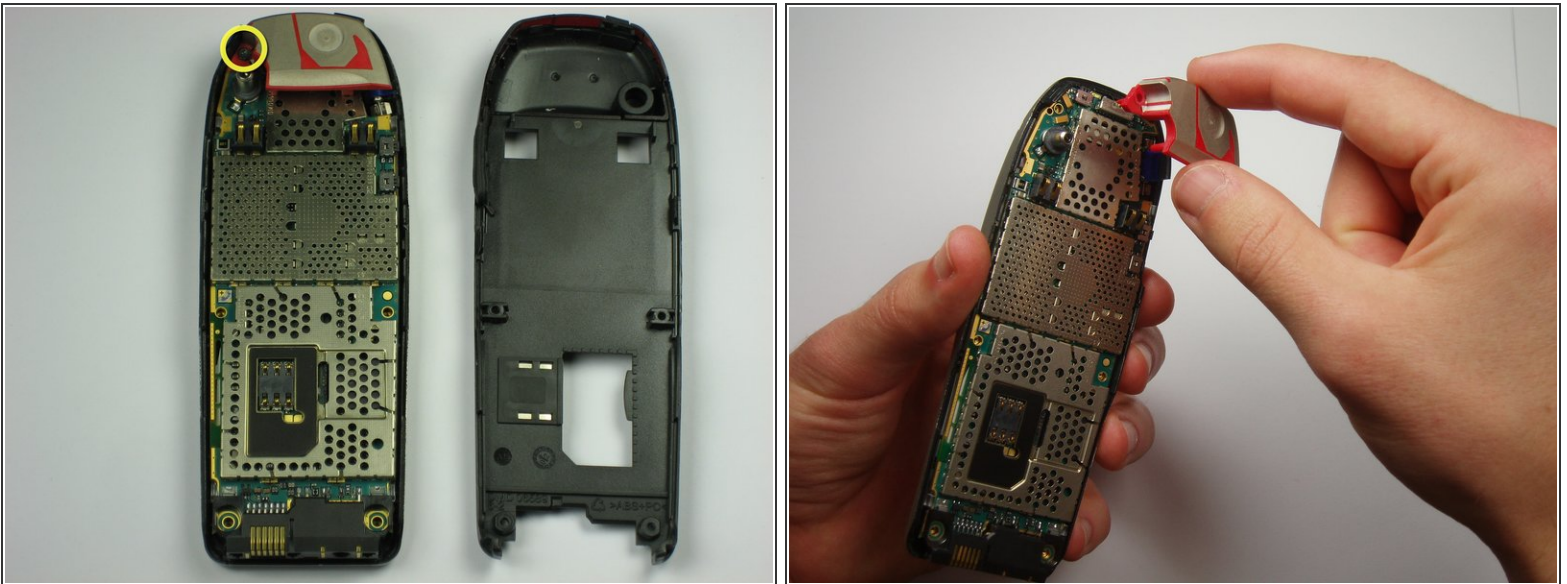
- Insert a plastic opening tool between the faceplate and the black backplate. Gently pry them apart, working from the lower end to the upper side of the phone.

Step 5



- Use the plastic opening tool to separate the top part of the backplate.
- ⓘ The plastic clips at the top require slightly more force to separate.

Step 6 — Antenna



- Remove the screw holding the antenna to the circuit board.
- Carefully lift off the antenna from the circuit board.

To reassemble your device, follow these instructions in reverse order.