



Remove IBM WorkPad c3 Battery

This guide will explain step by step on how to remove the IMB WorkPad battery.

Written By: Emily Falkenstein



INTRODUCTION

If your battery is not working you can remove it and replace it following the step by step process. The battery can easily just pop out following simple steps



TOOLS:

- [iFixit Opening Tools](#) (1)
 - [Tweezers](#) (1)
-

Step 1 — Back Case



- Turn the device over so that the screen is facing down.

⚠ In the next step the device will be heated, so the screen must be turned over to prevent heat damage to the LCD/Digitizer.

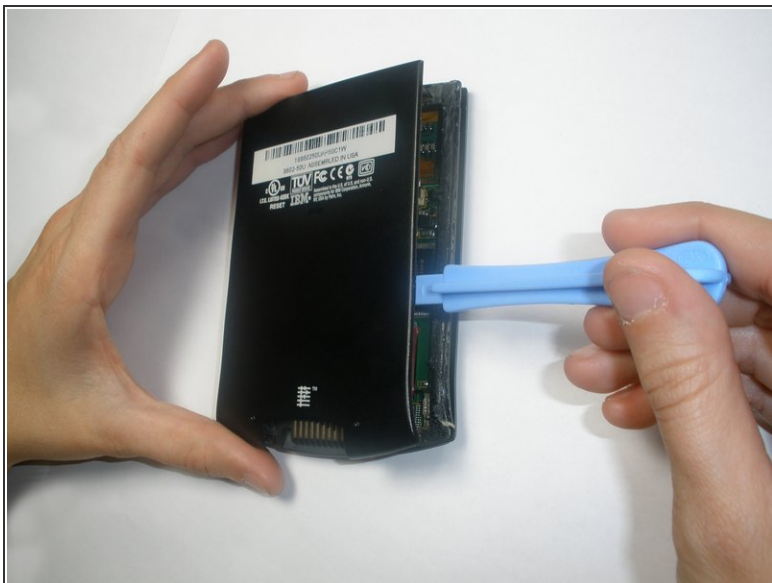
Step 2



- Using a hair dryer, slowly heat the edges of the WorkPad.
- Spend at least one minute heating each side of the device. This will melt the glue holding the case together, and allow it to be removed.

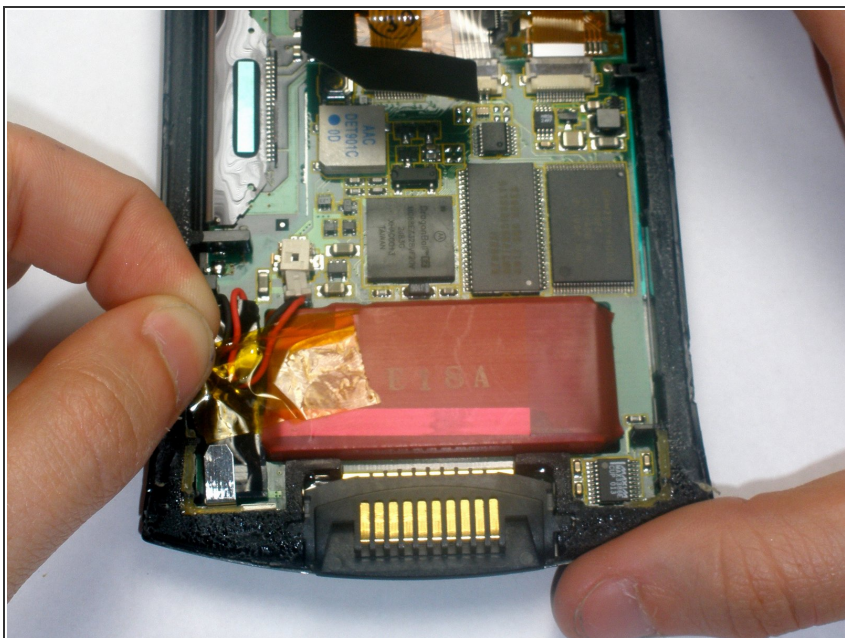
⚠ Be sure not to touch the device directly after heating as it will be extremely hot. Use a towel or oven mitt to grab it.

Step 3



- Use a plastic opening tool to pry the back case from the WorkPad.
- ⓘ If the rear cover is not coming off very easily, you probably need to reheat the case in order to sufficiently melt the glue.

Step 4 — Battery



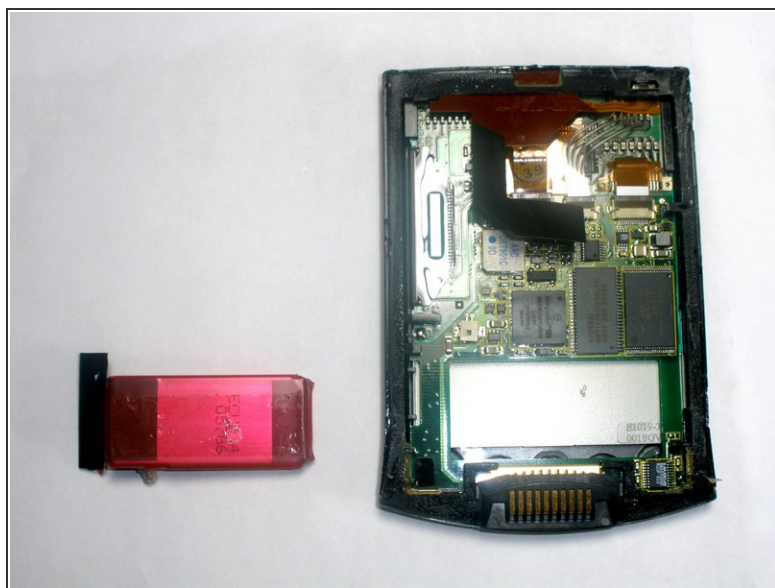
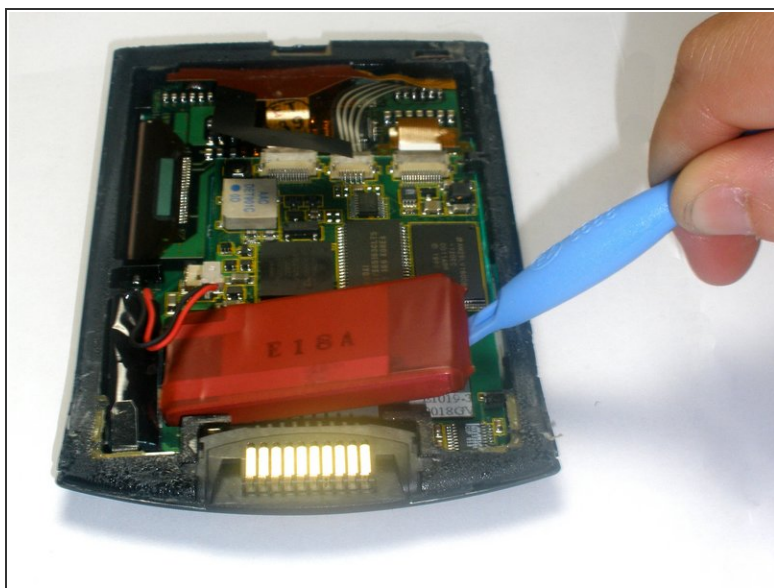
- Remove the yellow tape that is covering the battery connector

Step 5



- Using the tweezers, carefully disconnect the battery cable from the port

Step 6



- Using the plastic opening tools, lift the battery out of the case
- ⓘ The battery is secured with adhesive and it will take some effort to remove

To reassemble your device, follow these instructions in reverse order.