



Motorola V557 Keypad Replacement

This guide is useful when encountering broken...

Written By: Chad Brantley



INTRODUCTION

This guide is useful when encountering broken or stuck keys.

TOOLS:

[iFixit Opening Tool](#) (1)

[Push Pin](#) (1)

[Spudger](#) (1)

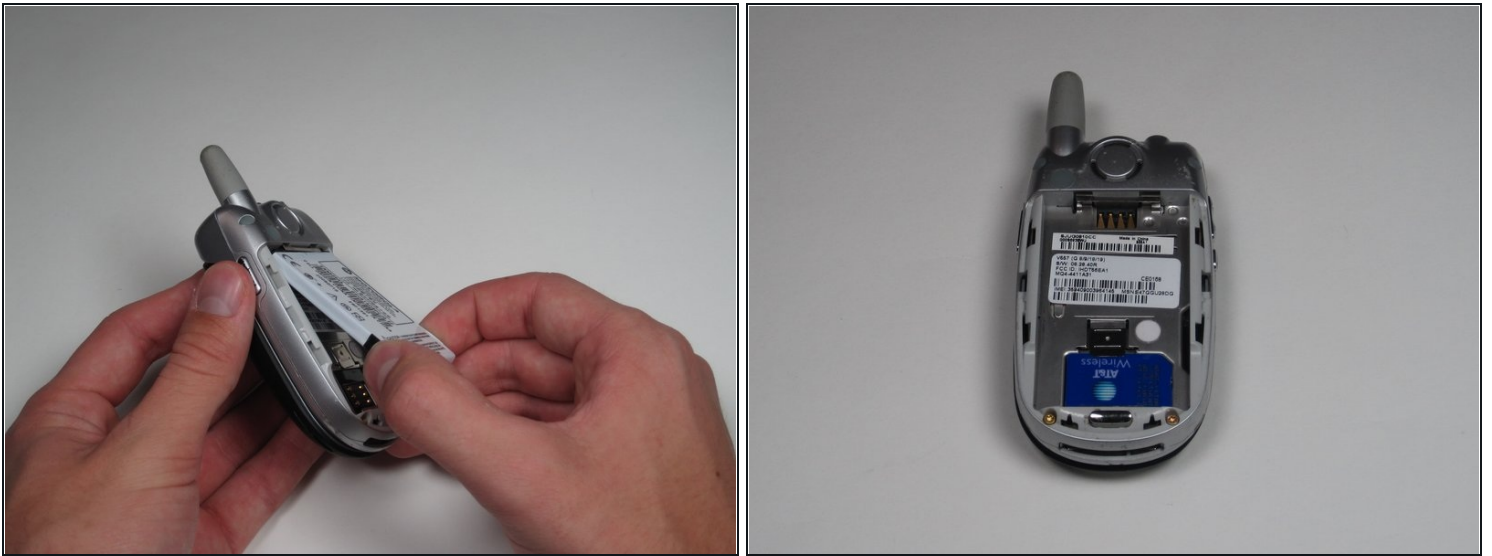
[T6 Torx Screwdriver](#) (1)

Step 1 — Battery



- First, on the back of the phone find the silver button on the top left corner of the phone.
- Simultaneously push down the button and slide the back plate down to reveal the battery.

Step 2



- Grab the lower edge of the battery at the two bottom corners.
- Pull upward on the edges to remove the battery.

Step 3 — SIM Card



- Push the metal slider towards the top of the phone until it clicks out of the original position.
- Gently slide out and remove the SIM card.

Step 4 — Antenna



- Grip the antenna and twist it counterclockwise to loosen it.
- When it has been loosened all the way, pull gently to remove the antenna piece.

Step 5 — Rear Casing



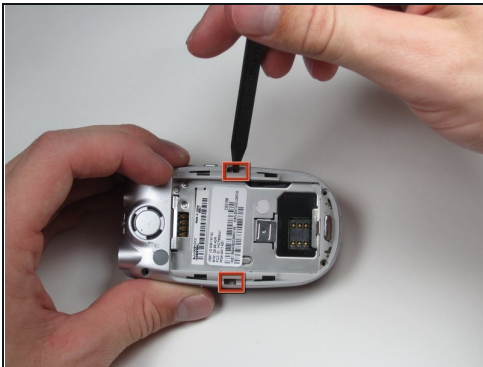
- Using the push pin, gently pry the top two screws of the cover off.
- The cover in the upper left of the back plate does not need to be removed.

Step 6



- At the corners of the phone, remove all four 6.0 mm Torx screws, using your screwdriver.

Step 7



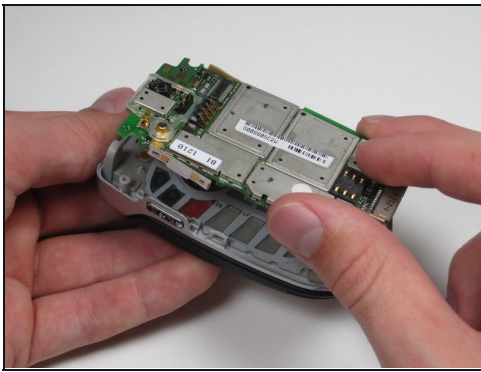
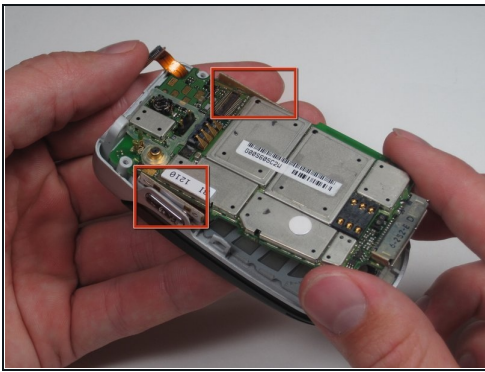
- Next, insert a spudger into the marked holes. One at a time pry away from the phone to release the internal tabs.
- Then, separate and detach the rear casing.

Step 8 — Motherboard



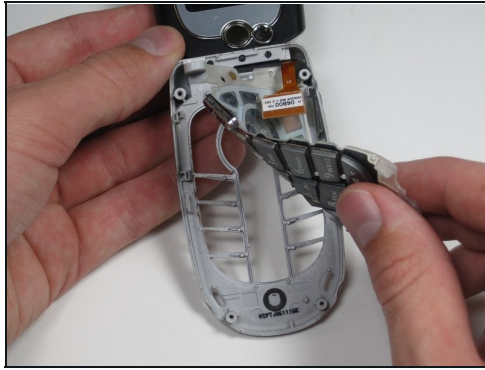
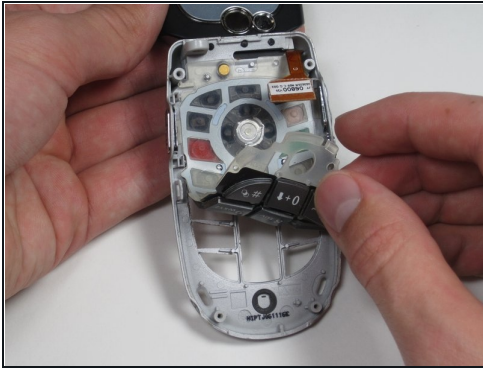
- Separate the front ribbon cable from the board with a plastic opening tool.

Step 9



- Make sure you don't break the ribbon cables that attach to the side buttons when removing the motherboard.
- Lift out the motherboard only after all cables have been disconnected. Try to touch it only from the sides.

Step 10 — Keypad



- With the phone flipped open, peel the keypad back to remove it from the casing, starting from the bottom.

To reassemble your device, follow these instructions in reverse order.