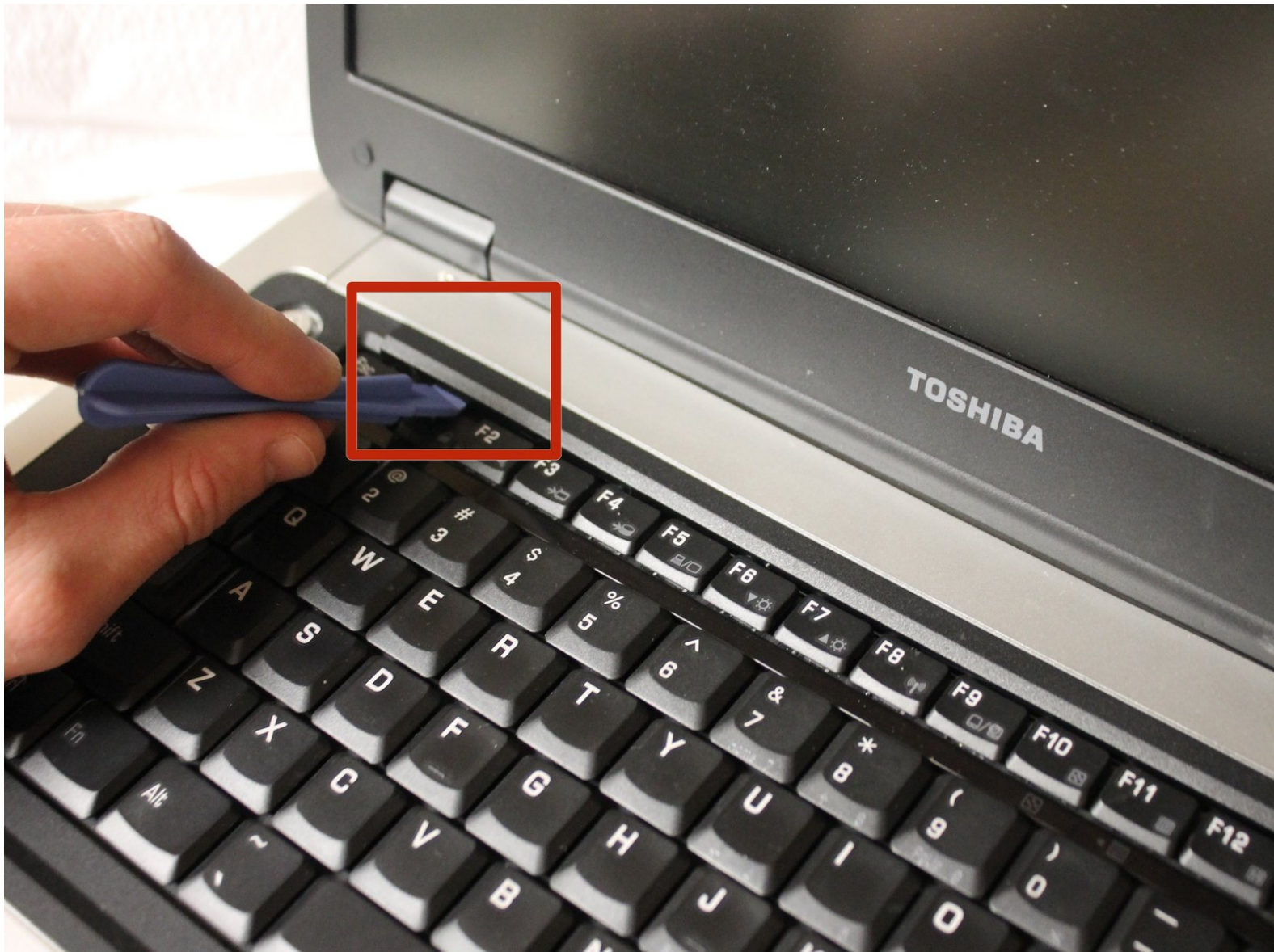




Toshiba Satellite A75-S226 Keyboard Replacement

Remove and replace keyboard for the Toshiba Satellite A75-S226

Written By: Garrett Gudgel





TOOLS:

- [Phillips #1 Screwdriver](#) (1)
 - [iFixit Opening Tools](#) (1)
-

Step 1 — Keyboard



- Use the plastic opening tool to lift up the top panel all the way along the keyboard until it loosens.
- ❗ It may be helpful to first pry at the rear of the hinge covers (not shown) to release them. Then Insert the plastic opening tool underneath the top panel's sides and then front edge.

Step 2



- Remove the top panel by popping the panel out the top left socket, then do the same with the right side.

Step 3



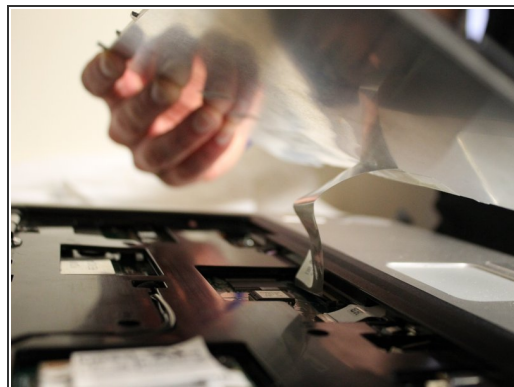
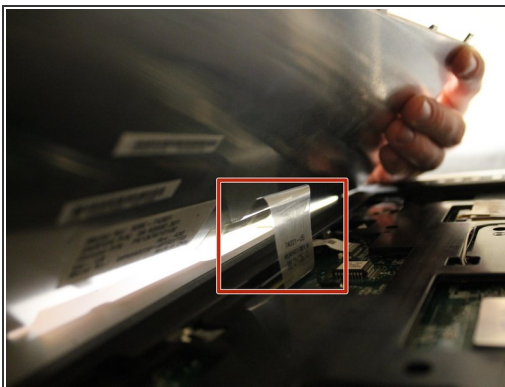
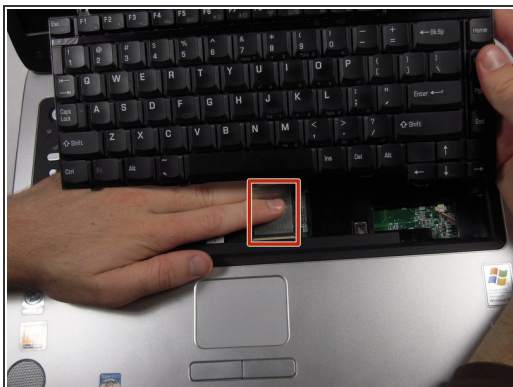
- Remove the two 3.67 mm screws from the top corners of the keyboard.

Step 4



- Use fingers to lift up the keyboard from the top.
- ⚠ Do not try to remove the keyboard completely because it is still attached to the motherboard.

Step 5



- Remove the cable connecting the keyboard with the motherboard.
- ⚠ Be aware of the locking tabs on each side of the ribbon-cable connector—they slide back about 2mm to free the cable.
- Lift up and remove the keyboard.

To reassemble your device, follow these instructions in reverse order.