



Gateway 600YG2 LCD Replacement

Replace a faulty display on your Gateway 600YG2...

Written By: Elizabeth Mazer



INTRODUCTION

Replace a faulty display on your Gateway 600YG2 using this guide. If the glass on your display cracks or breaks, it may need to be [replaced](#). Before using this guide, inspect the display for any swelling and check software compatibility. This could harm the computer's liquid crystal display (LCD) capabilities. The LCD is an [energy-efficient liquid](#) organic material with long-lasting LED backlighting, no screen burn (deteriorated pixels from overuse), and adaptable file sizes.

To disassemble electronic components in step 1 of this guide, you will need a Phillips #0 Screwdriver (identified as piece number IF145-005). Sprunger (identified as piece number IF145-002) will also be required to pry open the pieces.

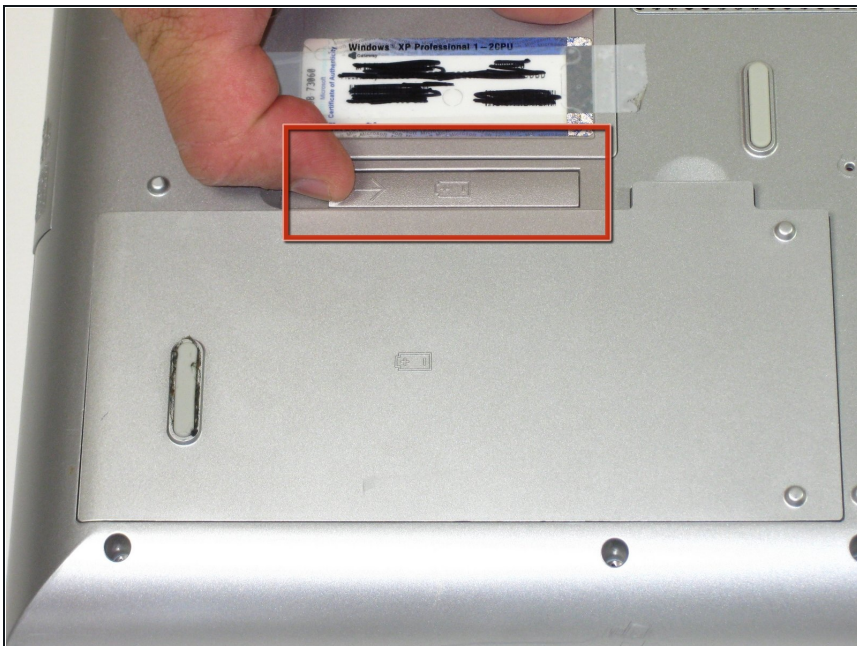
Turn off your laptop and disconnect it from any power sources before beginning the process.

TOOLS:

[Phillips #0 Screwdriver](#) (1)

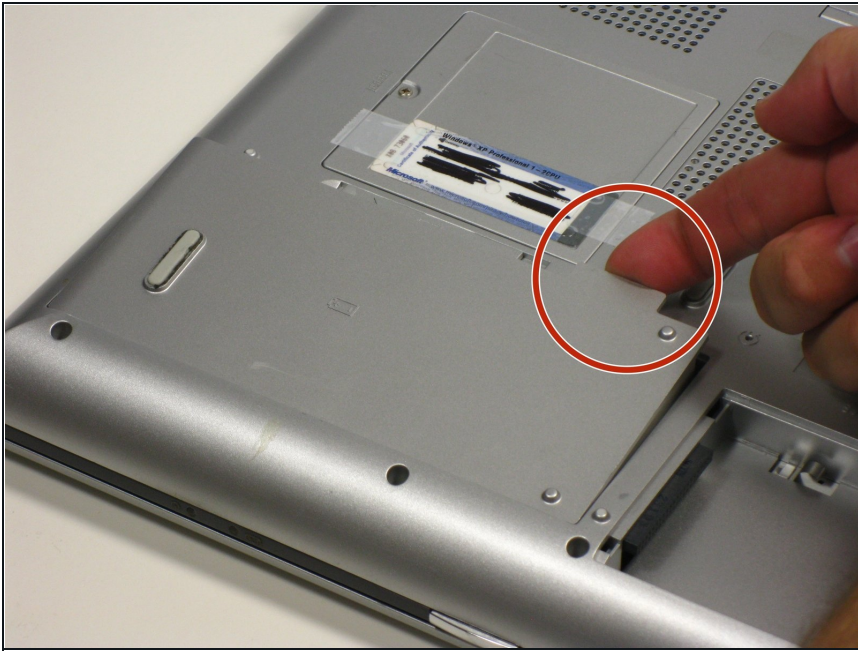
[Spudger](#) (1)

Step 1 — Battery



- Flip the laptop over.
- Slide the battery release tab to the right with your index finger to open the battery cover.

Step 2



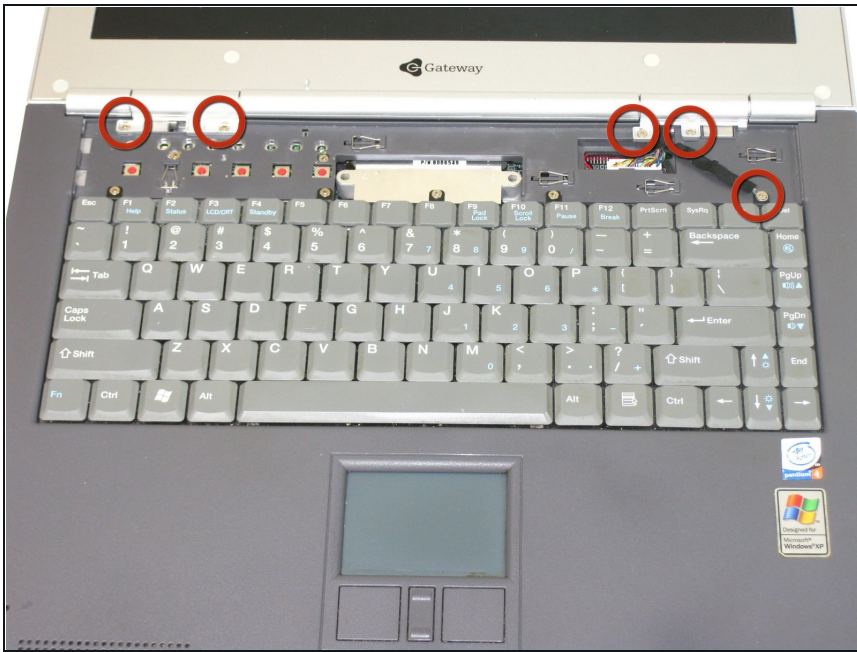
- Remove the battery cover using the tab on the right side.
- Take the battery out with your index finger.

Step 3 — Power Button Panel



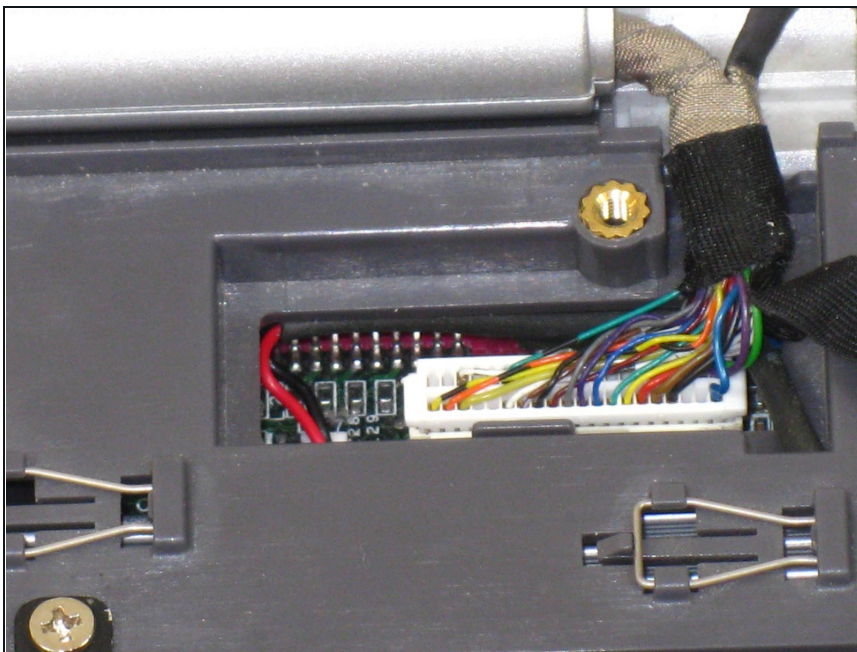
- Insert the spudger between the "sysrq" and "ins" keys.
- Gently pry free the power button panel above the keyboard, beginning from the right and moving to the left.

Step 4 — LCD



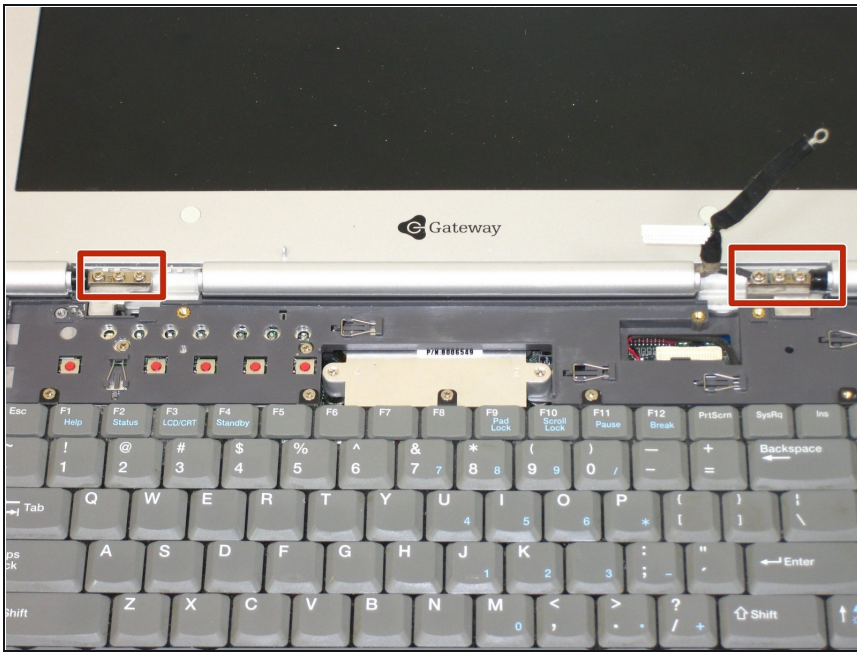
- Remove the five screws with a Phillips #0 screwdriver.
- ⓘ The LCD hinge covers are held in place by four screws. One screw is for grounding the LCD.
- Lift the hinge covers along the outer edges with the spudger until they are released.

Step 5



- Gently unplug the LCD from the system board.

Step 6



- Using the Phillips #0 screwdriver, remove six screws that hold the LCD to the hinge.

Step 7



- ① Check if any cables are still connected before pulling out the LCD.
- Remove the cable by gently pulling it out while holding down the LCD.

To reassemble your device, follow these instructions in reverse order.

