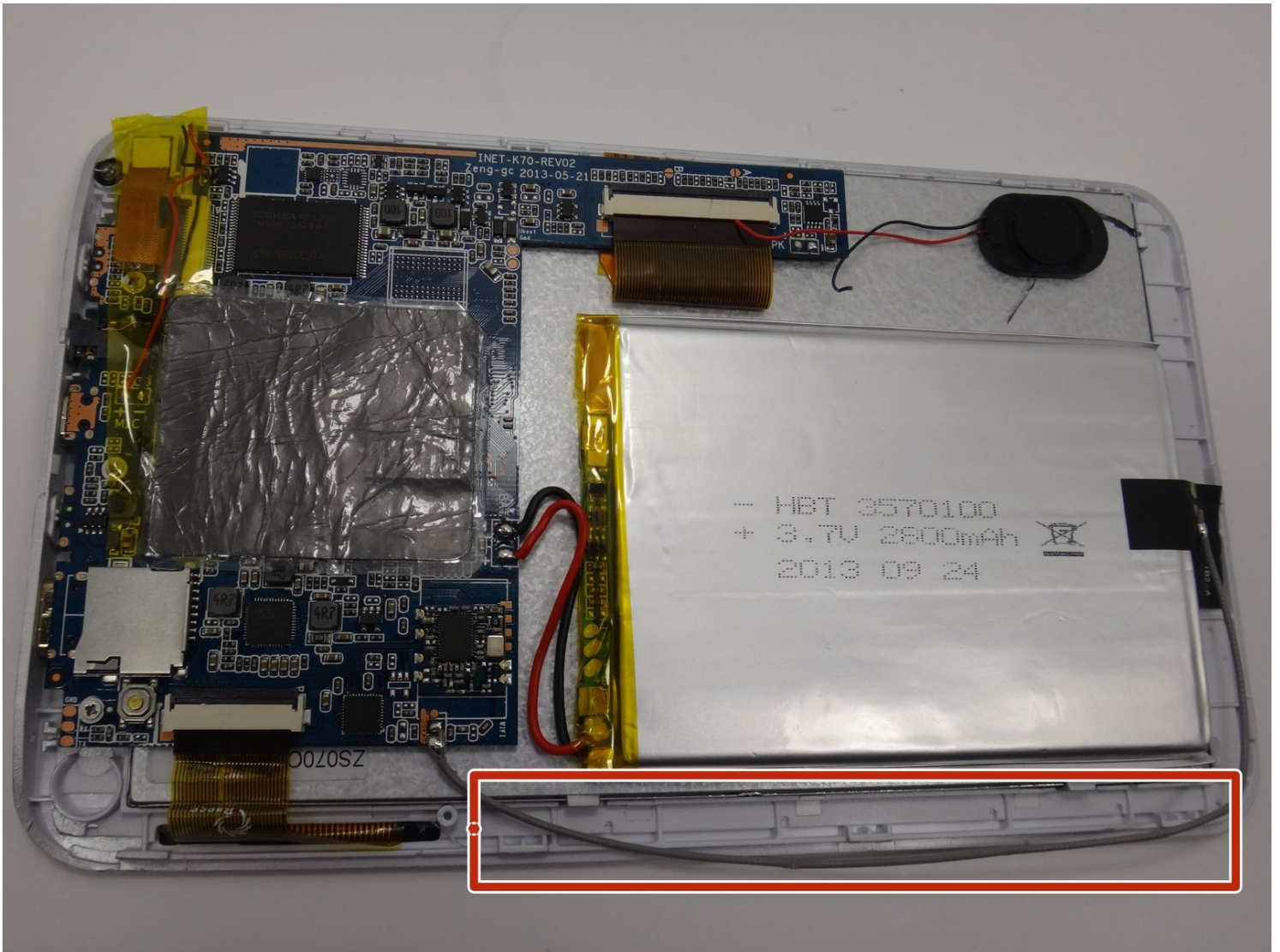




# How to replace the Azpen A720 Wi-Fi Antenna

The internal Wi-Fi antenna is important for...

Written By: Anna



# INTRODUCTION

The internal Wi-Fi antenna is important for connecting your tablet to Wi-Fi internet. Replacing the Azpen A720 Wi-Fi antenna is relatively simple. If you are having issues connecting to Wi-Fi use this guide to replace you internal Wi-Fi antenna.

---

## TOOLS:

[Soldering Iron 60w Hakko 503F](#) (1)

[Lead-Free Solder](#) (1)

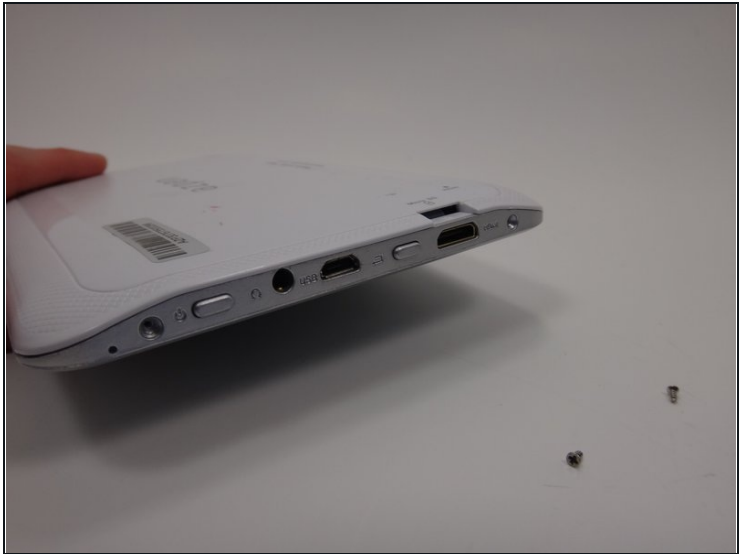
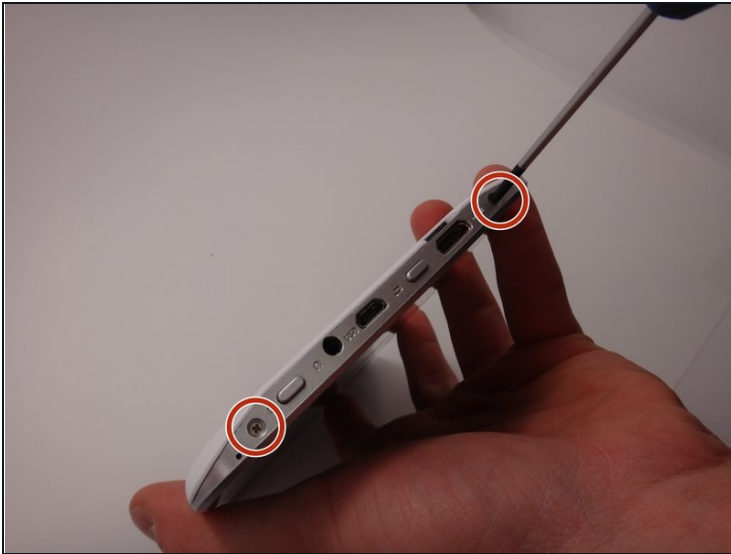
[Magnetic Project Mat](#) (1)

[Phillips #00 Screwdriver](#) (1)

[iFixit Opening Tool](#) (1)

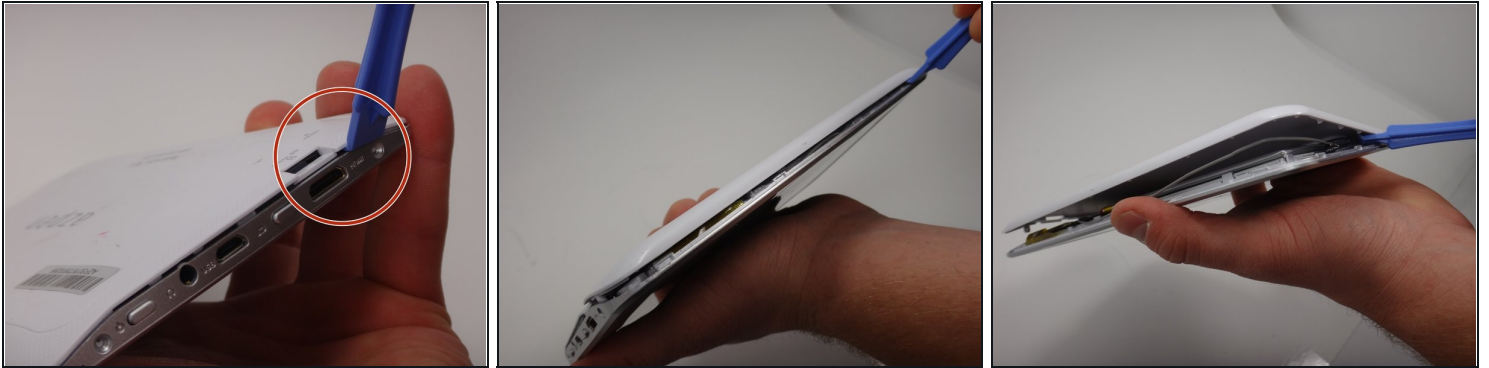
---

## Step 1 — Back Cover



- Use a Phillips #00 screwdriver to remove the two 4mm screws found on the top edge of the tablet near the power button.

## Step 2



- Use the plastic opening tool to pry the white back from the silver frame. Start near the micro SD slot.
  - ① Slide the plastic opening tool around the perimeter of the casing until the back is disconnected.

## Step 3



- Remove the rear casing.

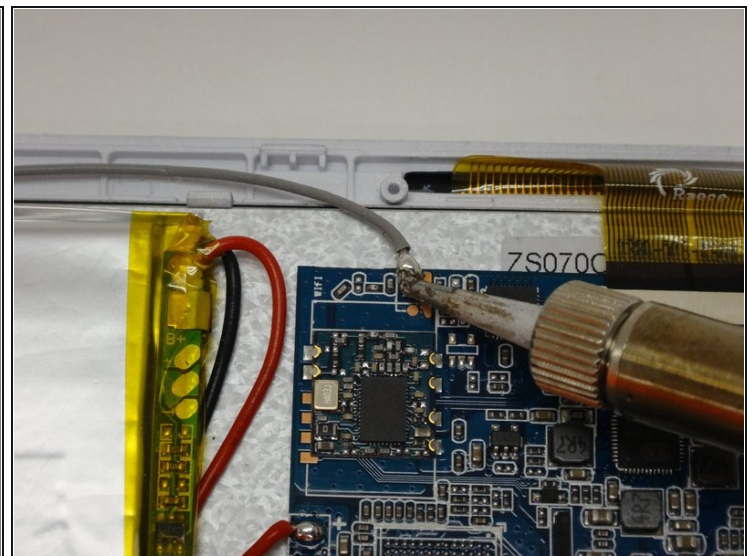
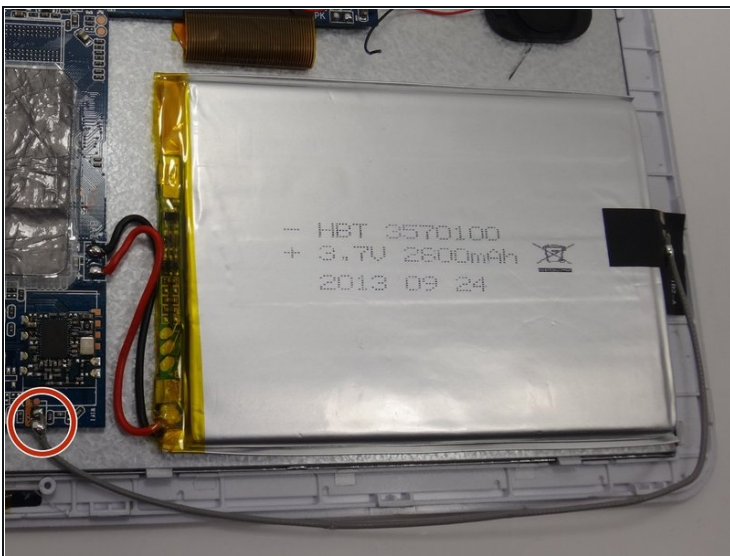


## Step 4 — Wi-Fi Antenna



- Locate the gray cord attached to the motherboard and the battery. This is the wifi antenna.

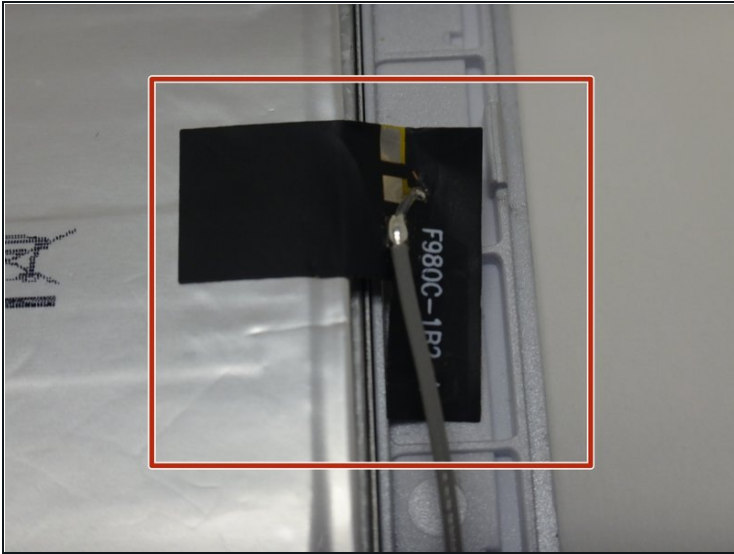
## Step 5



- Locate the soldering connection between the wifi antenna and the motherboard.
- Using a soldering iron, melt the soldering connection between the cord and the motherboard and disconnect the cord.

⚠ The soldering iron gets very hot, be careful not to touch the tip to avoid burns. Click [here](#) to learn how to solder.

## Step 6



- Locate the black sticker connecting the wifi antenna to the battery.
  - Peel the black sticker off of the battery to disconnect the wifi antenna.
  - Remove and replace the defective wire.
- 

To reassemble your device, follow these instructions in reverse order.