



# Nokia 2115i Faceplate Replacement

Removing and replacing the faceplate.

Written By: Shane



# INTRODUCTION

Replacing the faceplate is very quick and simple to do.



## TOOLS:

- [Spudger](#) (1)




## PARTS:

- [Replacement faceplate](#) (1)



## Step 1 — Nokia 2115i Battery



 To prevent shock, press down on the power button located on the top of the phone until the phone shuts off.

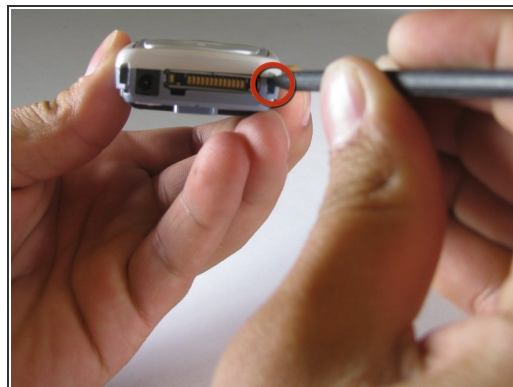
- Press down on the small gray button located on the back of the phone.
- Slide the back plate down and off.

## Step 2



- To remove the battery, begin by holding the phone sideways.
- Then, insert your thumb in the groove below the battery and push the battery up and out.

## Step 3 — Faceplate



- Locate the spudger. A photo of the correct spudger is provided to the left.
- Turn the front of the phone to face you. Find the two small square holes on the bottom left and right sides of the faceplate.
- Insert the spudger into each square hole and push up to detach the face plate.

To reassemble your device, follow these instructions in reverse order.