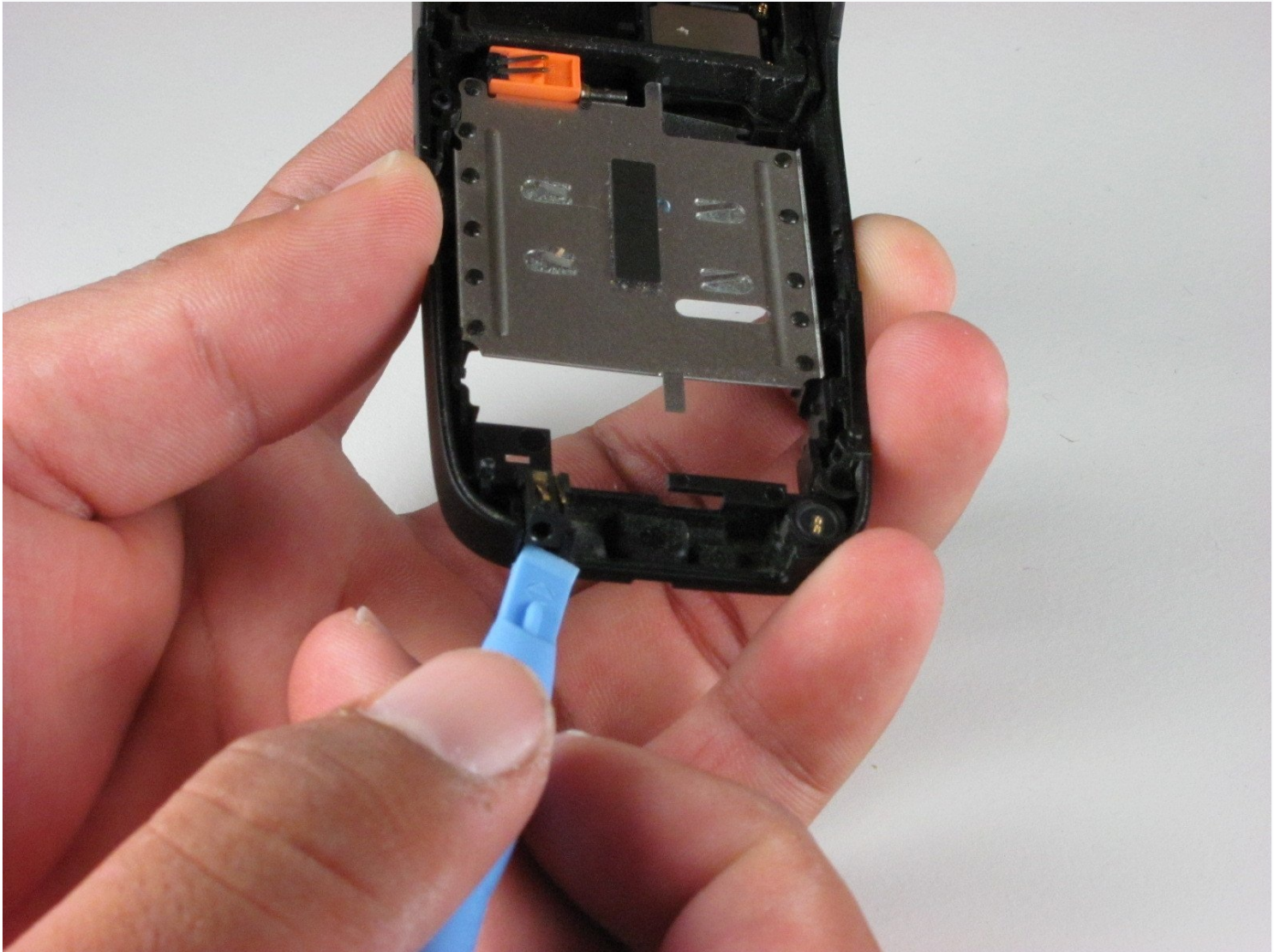




Nokia 6085h Microphone Replacement

This guide will help locate the microphone for...

Written By: Andrew



INTRODUCTION

This guide will help locate the microphone for removal and/or repair.

TOOLS:

[iFixit Opening Tool](#) (1)

[T6 Torx Screwdriver](#) (1)

Step 1 — Battery



- Flip over the phone so that the back is facing up.
- Pressing your thumb against the back cover, slide the cover off of the phone.

Step 2



- Remove the phone's battery.

Step 3 — Motherboard



- Use the iFixit opening tool to pry out the two tabs at the top corners of the battery compartment.

Step 4



- Gently pull off the hinge cap from the top of the phone by hand.

Step 5



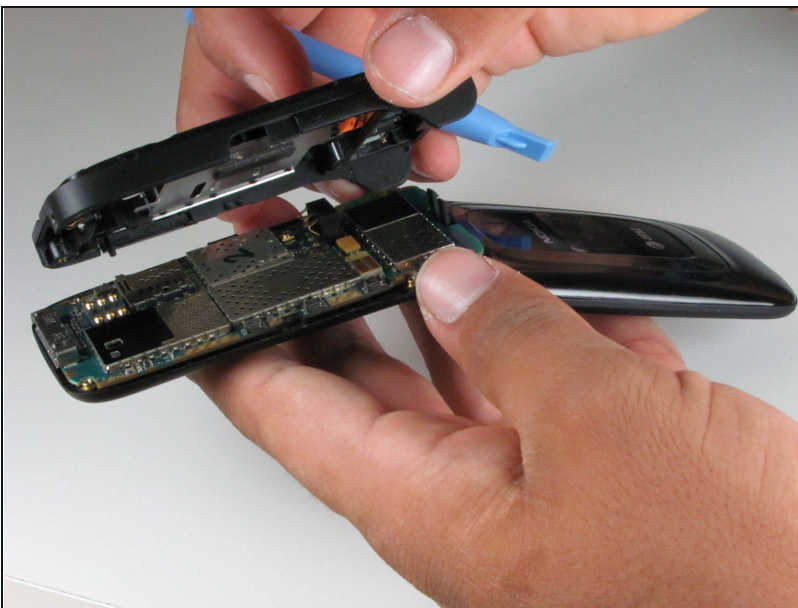
- Use a T6 Torx screwdriver to remove the four 7.6 mm screws at the corners of the battery compartment.

Step 6



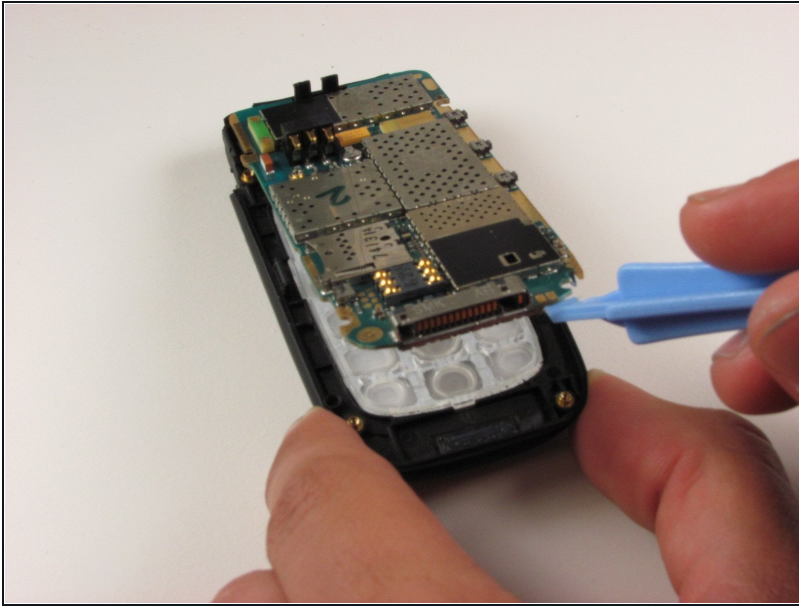
- Open the phone and turn it on its side. You will see a seam around the Nokia's side.
- Use the iFixit opening tool to run along this seam to pop the clips holding the casing to the frame.

Step 7



- Use your hand to gently pull off the back panel from the bottom half of the phone.

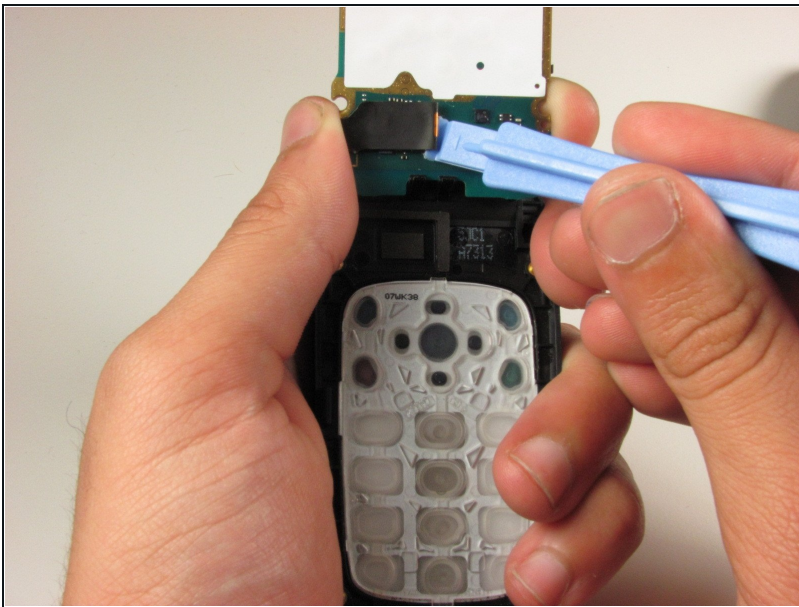
Step 8



- Close the phone and place it on a flat surface.
- Use the plastic opening tool or your finger to lift up the motherboard from the bottom casing.

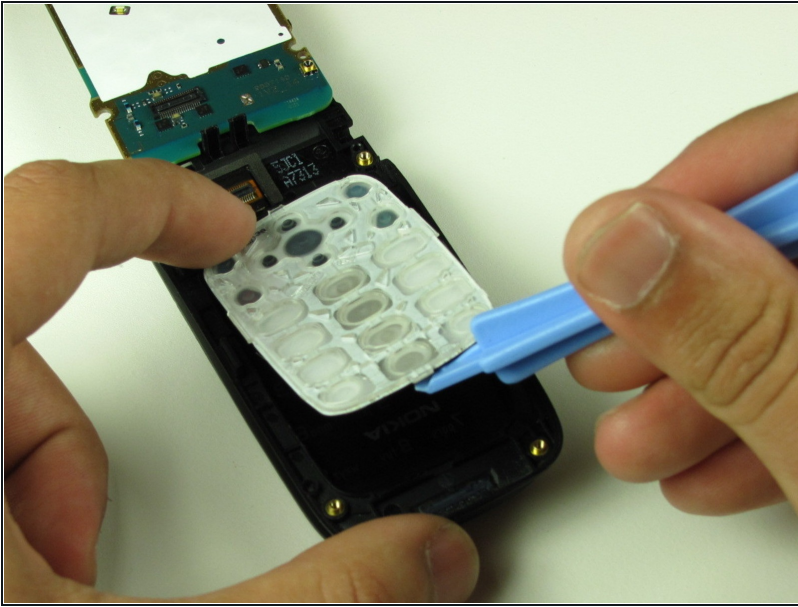
⚠ Be careful when pulling up the board; there is still a ribbon cable attached to the back of the board.

Step 9



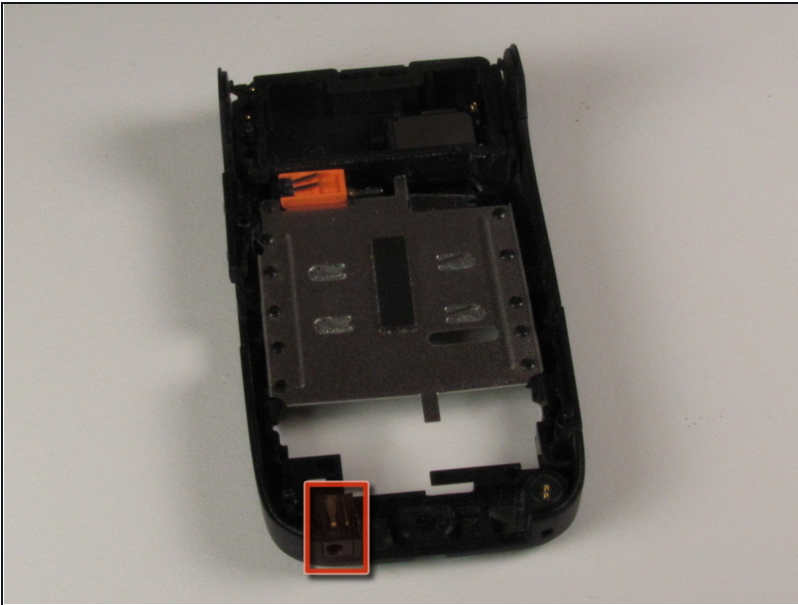
- Find the underside of the motherboard and locate the ribbon cable that attaches the board to the rest of the phone. Use the plastic opening tool to slowly detach the ribbon cable connector, then pull the motherboard away from the frame.

Step 10 — Keypad



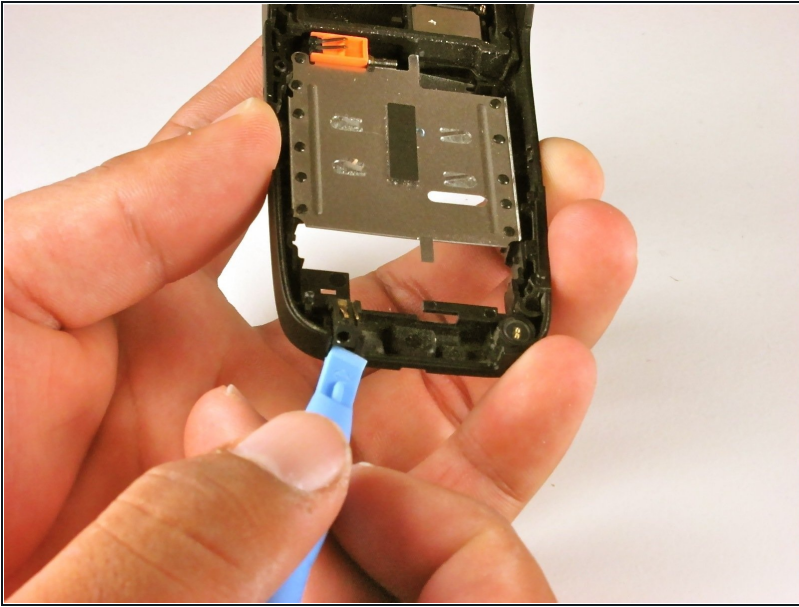
- Pry the keypad out with the plastic opening tool once the motherboard is moved out of the way.

Step 11 — Microphone



- Locate the small speaker module on the back of the separated battery compartment in the lower left hand corner.

Step 12



- Use the plastic opening tool to pry out the microphone from the bottom of the compartment.

To reassemble your device, follow these instructions in reverse order.