



# Gateway 600YG2 System Fan Replacement

This guide covers the removal of the system...

Written By: Elizabeth Mazer



# INTRODUCTION

This guide covers the removal of the system fan. When following the keyboard instructions, there is no need to unplug it. Just fold it back to gain access to the fan.

---

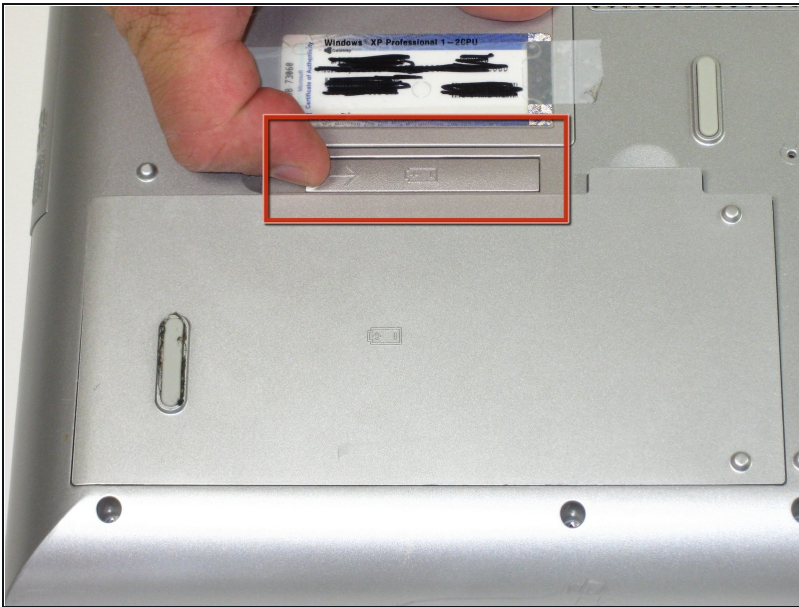
## TOOLS:

Phillips #0 Screwdriver (1)

Spudger (1)

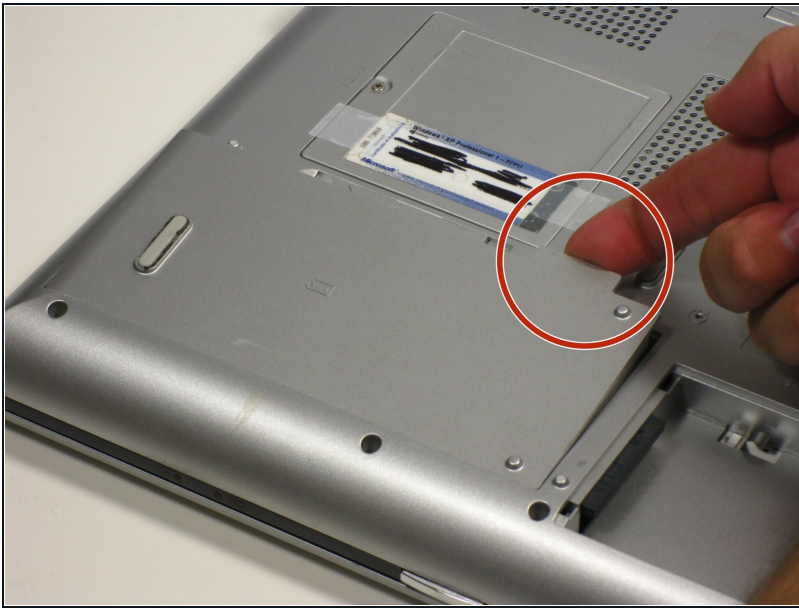
---

## Step 1 — Battery



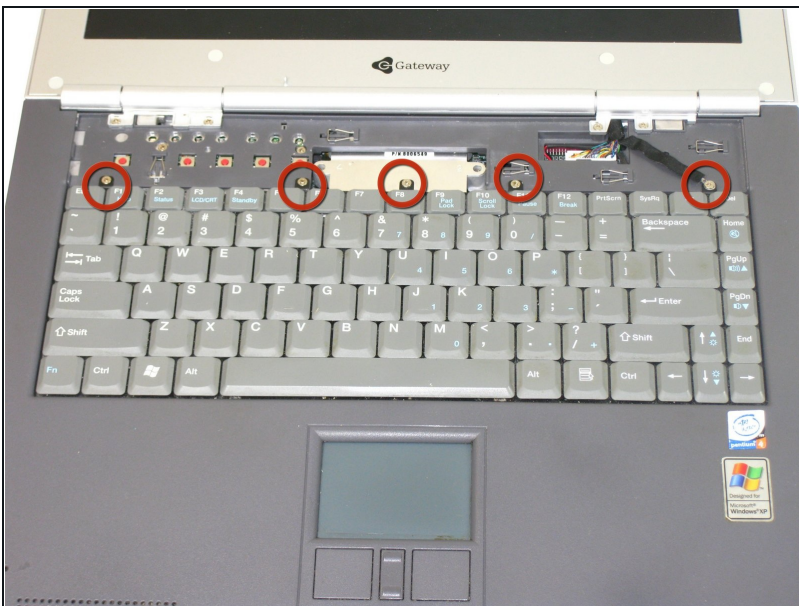
- Flip the laptop over.
- Slide the battery release tab to the right with your index finger to open the battery cover.

## Step 2



- Remove the battery cover using the tab on the right side.
- Take the battery out with your index finger.

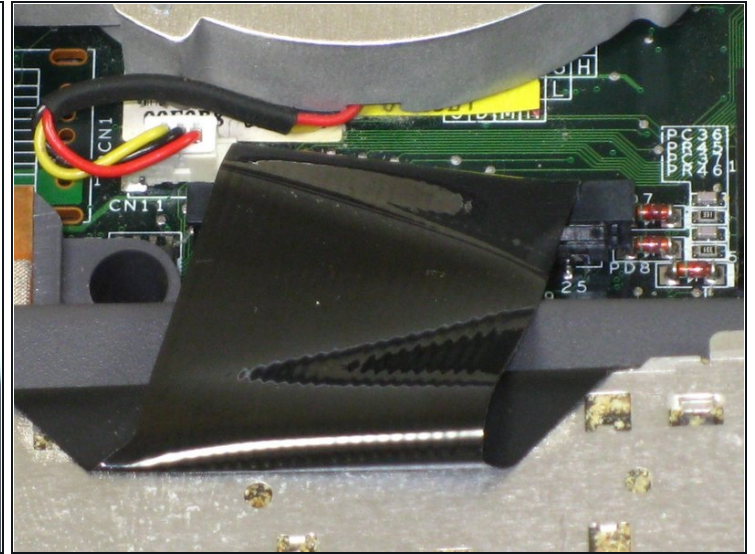
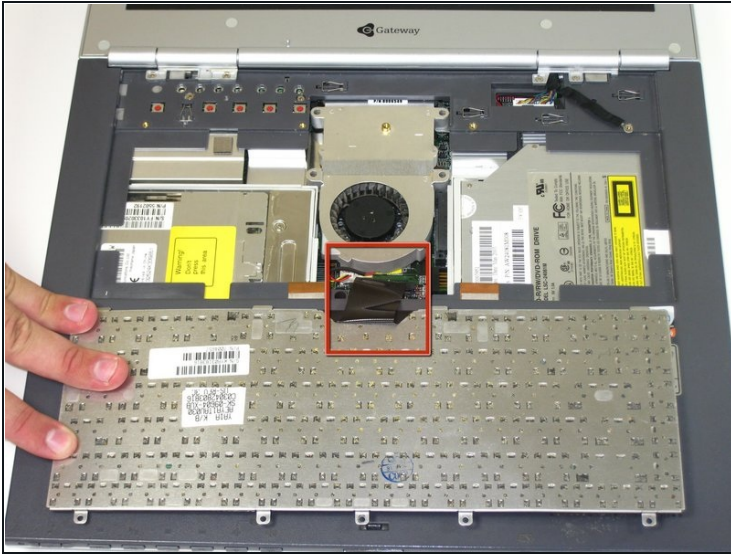
## Step 3 — Keyboard



- Remove the 5 screws holding the keyboard in place.

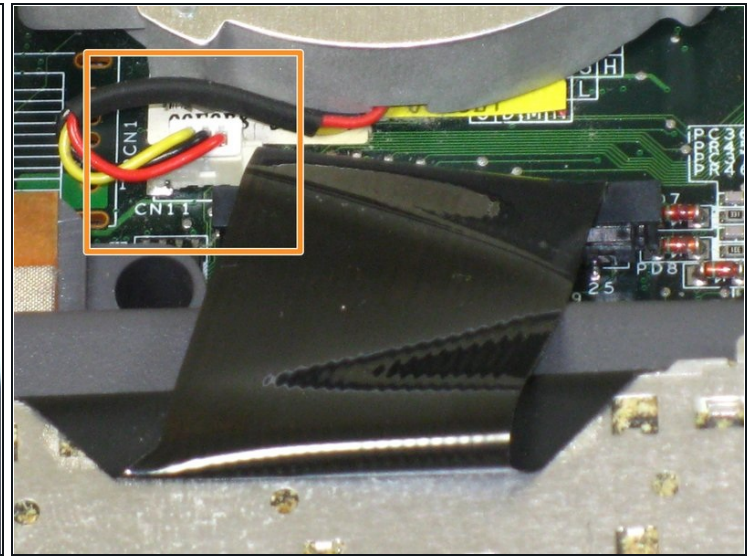
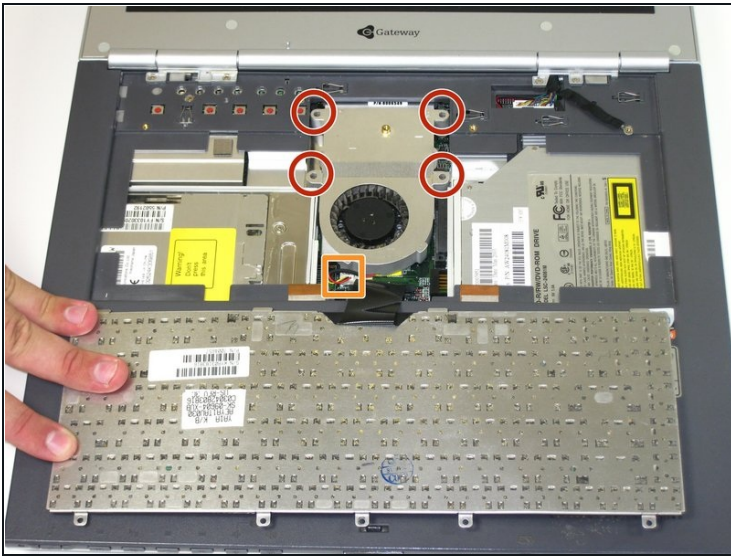


## Step 4



- ⚠ Potential for device damage: When lifting the keyboard out, do not lift the keyboard up. Only fold back along the space bar edge.
- ⚠ Potential for device damage: Do not pull the black cable by the ribbon section. Only pull it from the connector itself.
- Follow the black ribbon cable to the connector and gently pull straight up.

## Step 5 — System Fan



- Unscrew the four captive screws.
- Unplug the fan from the system and pull it out. The fan unit should slide forward before coming free.

To reassemble your device, follow these instructions in reverse order.