



Canon PowerShot SX260 HS Flash Assembly Replacement

During this guide we will be showing Canon PowerShot SX260 HS users how to replace the flash assembly

Written By: Tyler Kelch





TOOLS:

- [iFixit Opening Tools](#) (1)
 - [Tweezers](#) (1)
 - [64 Bit Driver Kit](#) (1)
-

Step 1 — Flash Assembly



⚠ Be sure to always remove the battery from the camera before disassembling to avoid permanent damage.

- The camera has a total of 6 (3 mm) external screws that will need to be removed; 2 on the left side, 2 on the bottom, and 2 on the right side.
- Remove the 2 screws on the left side.
- Remove the 2 screws on the bottom of the camera.
- Remove the 2 screws on the right side of the camera.

Step 2



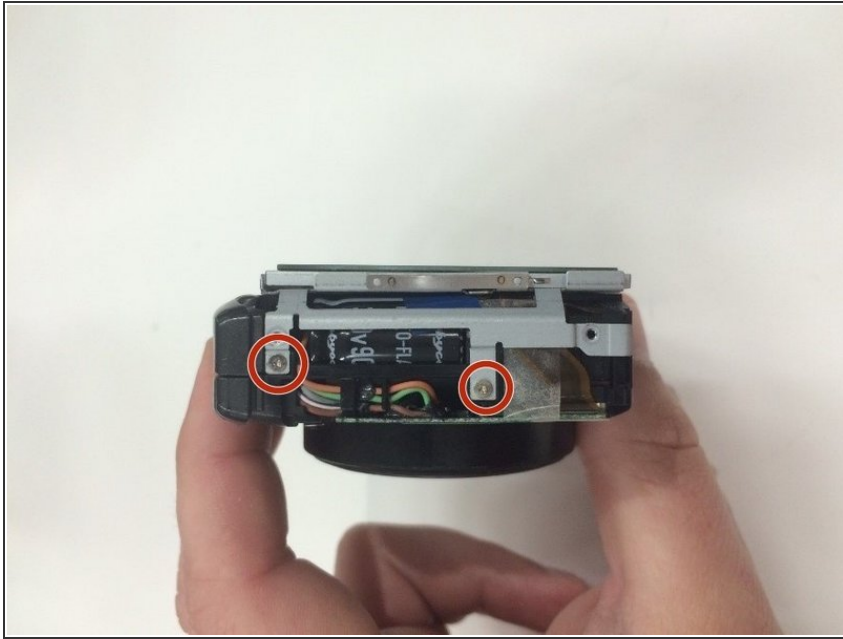
- Use your plastic opening tool to gently lift and remove the back face plate.

Step 3



- After removing the exterior screws, use your fingers to gently lift off the front face plate.

Step 4



- Next, remove the 2 (3 mm) interior screws on the left side of the camera.

Step 5



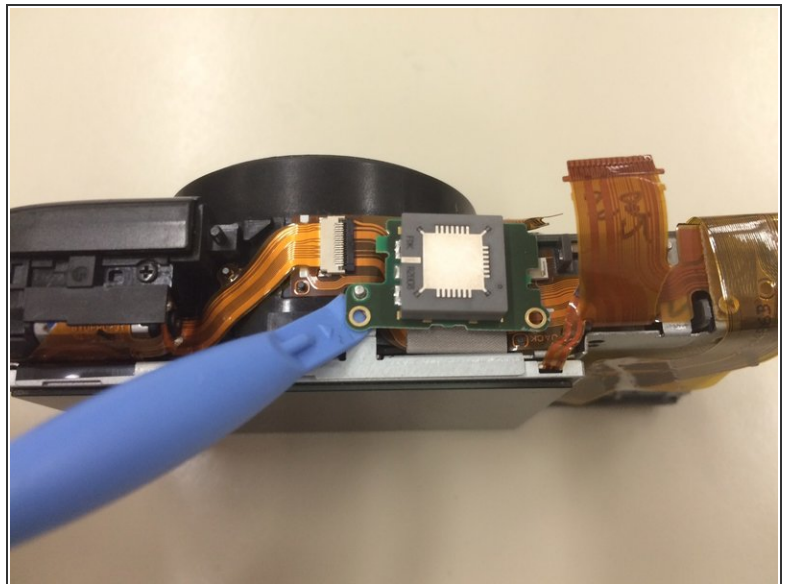
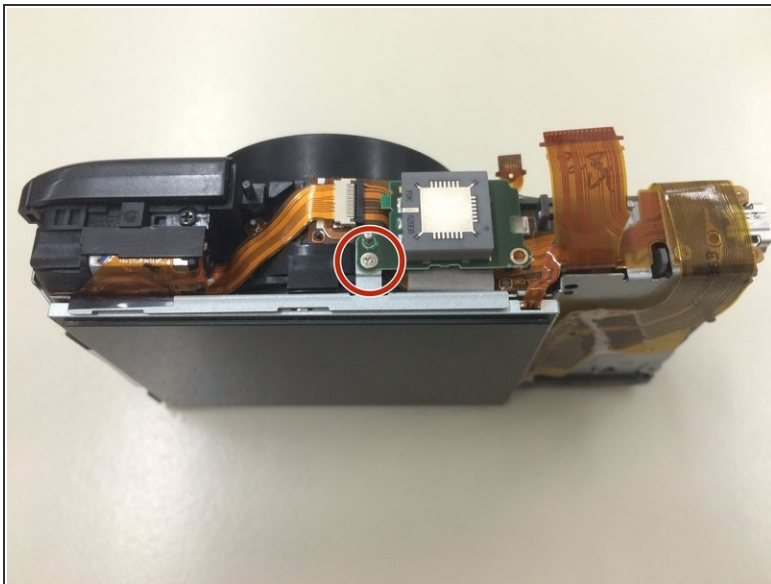
- After removing the interior left screws, use a plastic opening tool to gently pull the top face plate off.

Step 6



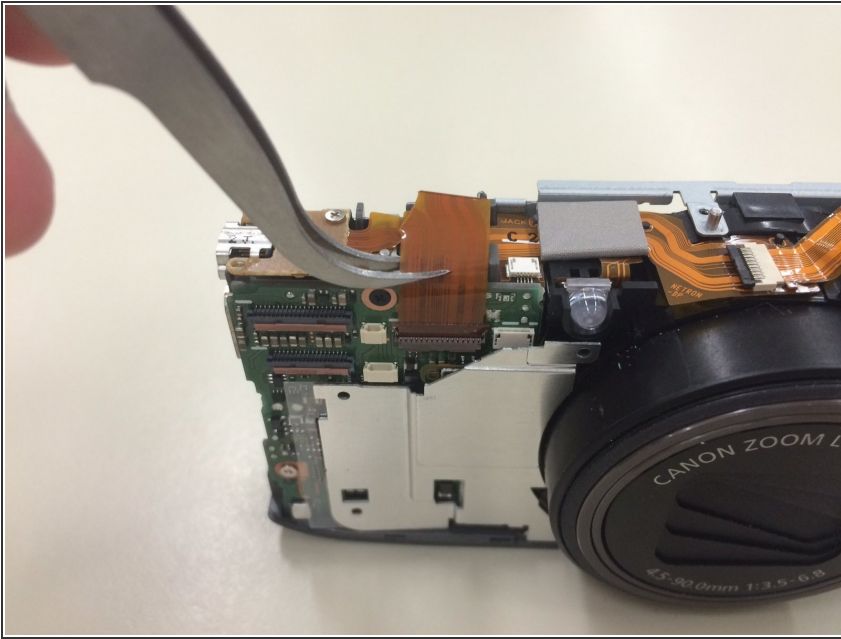
- Next, you will need to remove the dial panel by removing the 2 (3mm) screws on the back side of the camera.
- Gently remove the dial panel with your fingers.

Step 7



- Remove 1 (3 mm) screw from the flash generator with a Phillips screw driver
- Gently lift the flash generator off of the camera with the plastic opening tool .

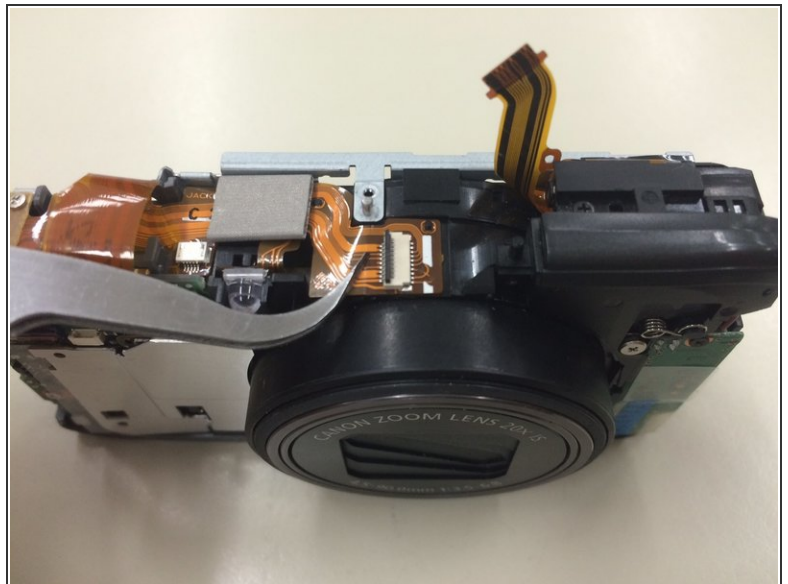
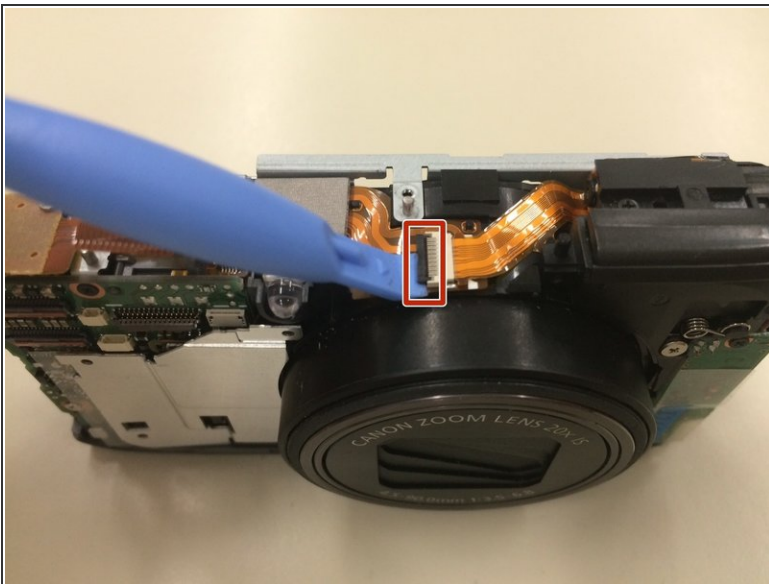
Step 8



- Gently unplug the ribbon cable with your tweezers.

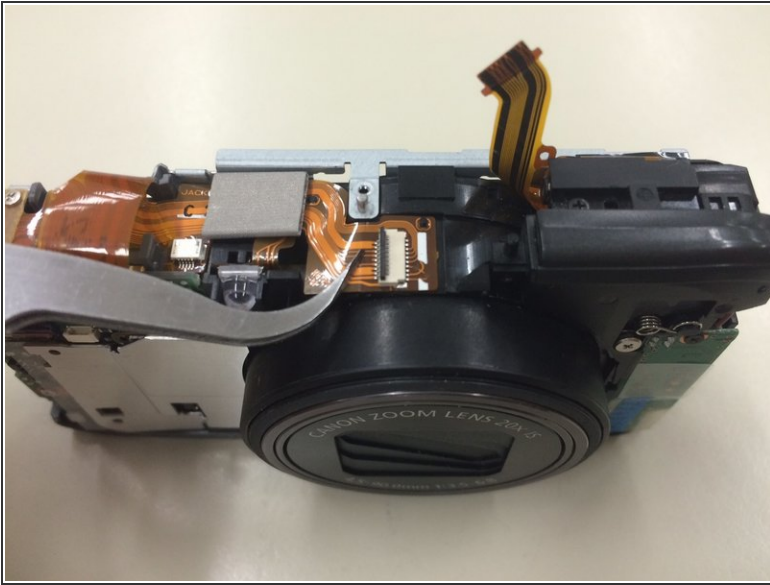
 **Be careful not to rip it.**

Step 9



- Using your plastic opening tool to gently move the plug lock from the end of the ribbon cord by lifting it upward.
- Gently remove the ribbon cable from the connector with tweezers.

Step 10



- Gently remove the ribbon cable assembly from the top of the camera with your tweezers.
- ⓘ This cable is a long piece that runs across the top of the camera.
- ⓘ The flash assembly is connected to this cable.
- Once removed gently lift out of the camera
- Replace the ribbon cable with the attached flash assembly.

To reassemble your device, follow these instructions in reverse order.