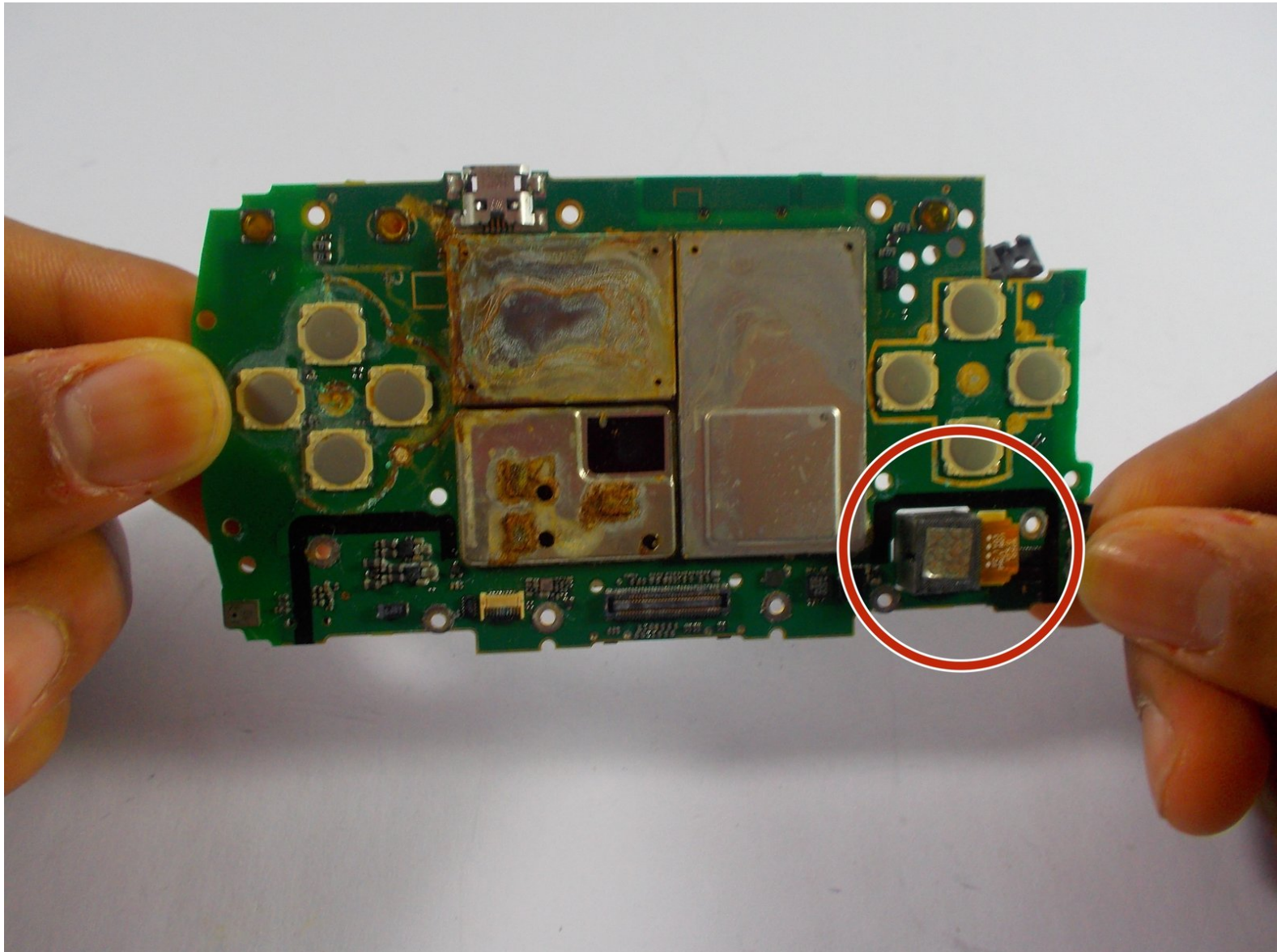




# Sony Ericsson Xperia Play Rear Facing Camera Replacement

How to replace the camera on you device.

Written By: Pieter Boersma

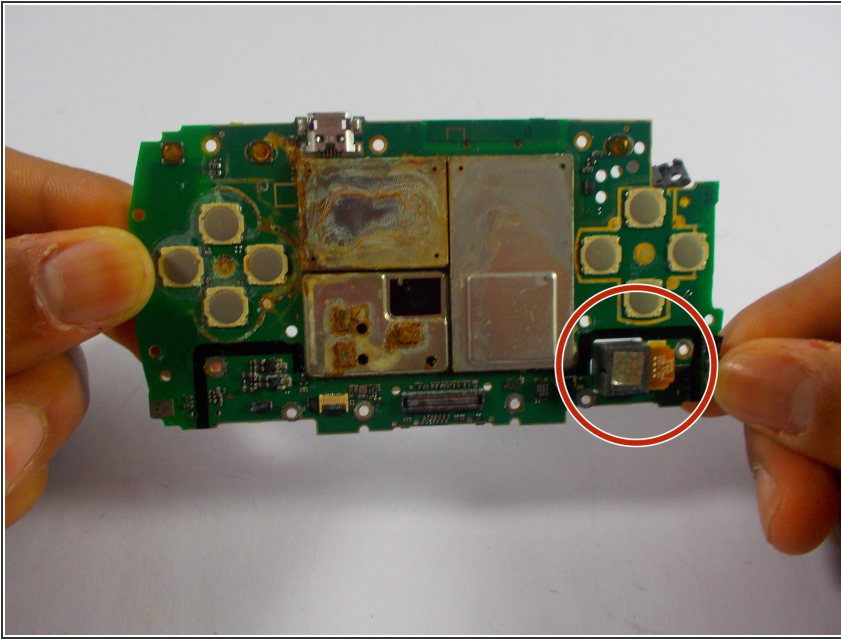




## TOOLS:

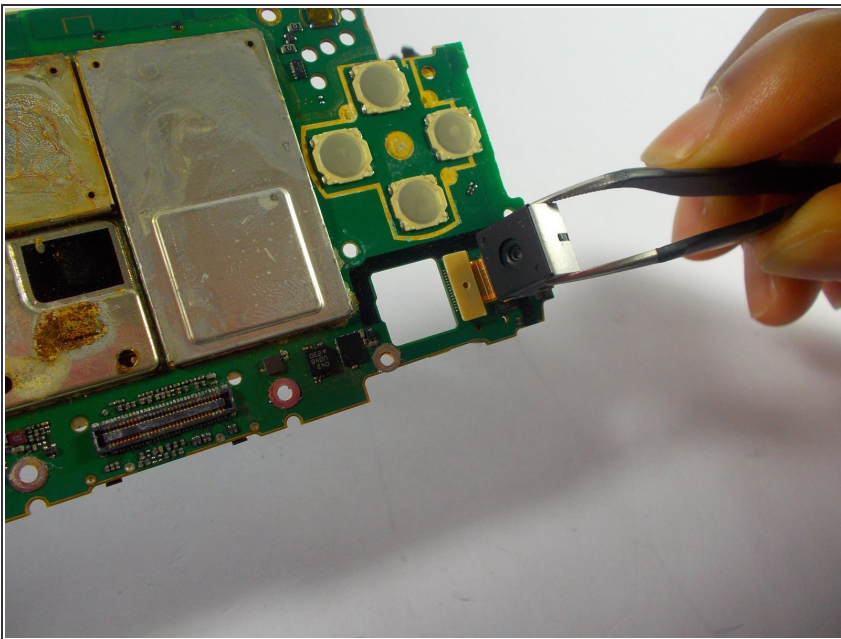
- [Phillips #00 Screwdriver](#) (1)
  - [iFixit Opening Tools](#) (1)
  - [Tweezers](#) (1)
-

## Step 1 — Rear Facing Camera



- Follow the Prerequisite Guide on how to Remove the Controller Plate/Buttons to prepare the phone for disassembly. Stop when the motherboard has been detached.
- Orientate the motherboard so that the camera faces away, as shown in the picture.

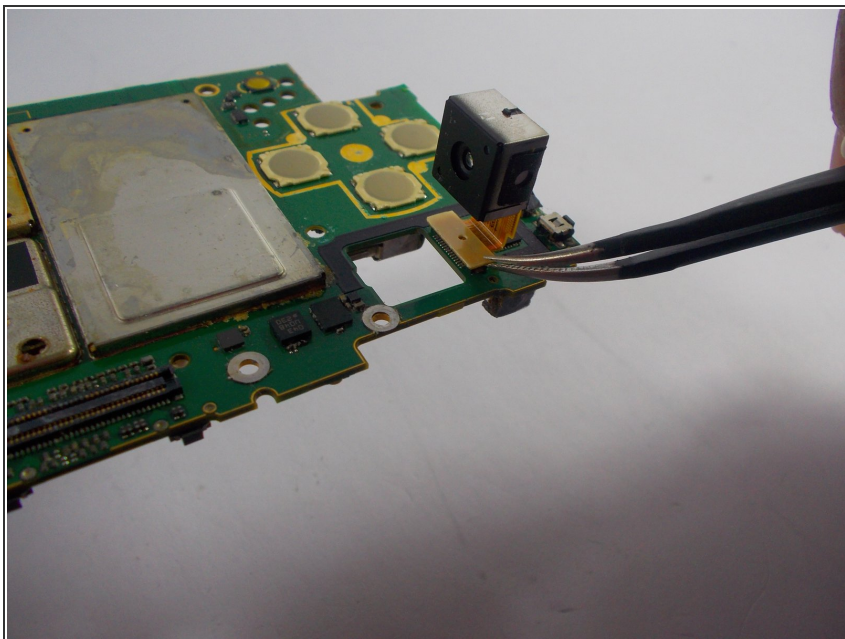
## Step 2



- With the camera facing away, pull it from the motherboard until it stands perpendicular to the board. Tweezers can be used to do this.

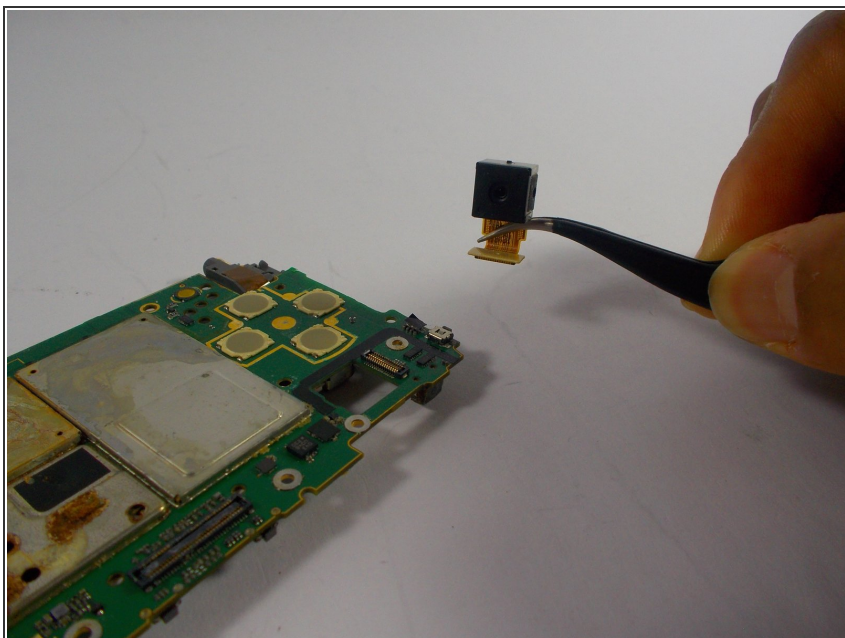


### Step 3



- Use tweezers to pull the camera off of the motherboard. Hold on to the plastic connector and apply the force away from the board.

### Step 4



- The camera is now detached.

To reassemble your device, follow these instructions in reverse order.