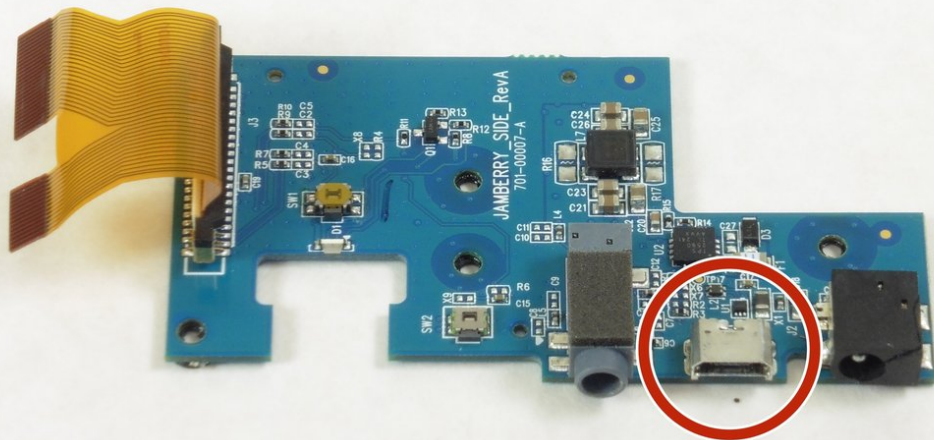




Jawbone Big Jambox Micro USB Port Replacement

Procedure for replacing the Micro USB Port and accompanying auxiliary board.

Written By: Gabriella Graham



INTRODUCTION

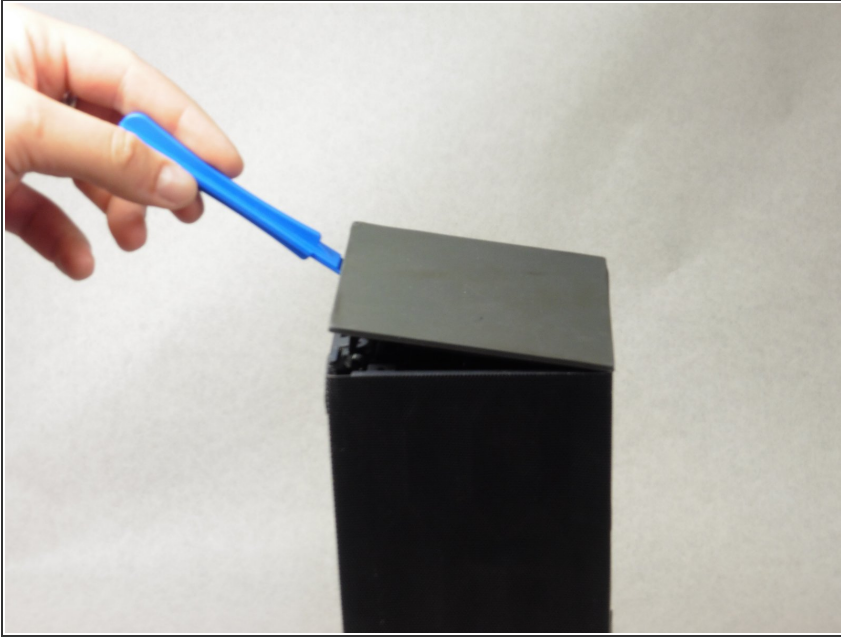
If you are having trouble either connecting your Jambox via the Micro USB port or your Micro USB port has become damaged at some point, then this guide will walk you through the step-by-step process to replace it. The Micro USB port is connected with the auxiliary board, which will need to be replaced as well. This guide requires minimal soldering.



TOOLS:

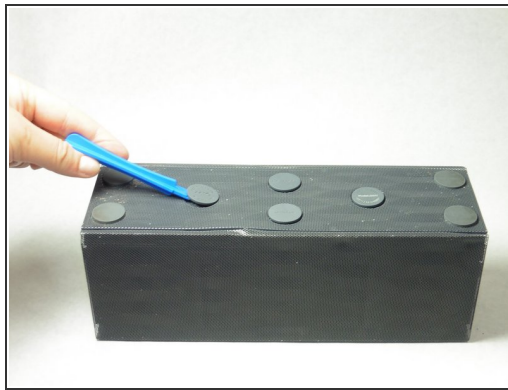
- [iFixit Opening Tools](#) (1)
 - [T6 Torx Screwdriver](#) (1)
 - [Soldering Iron](#) (1)
-

Step 1 — Outer Case



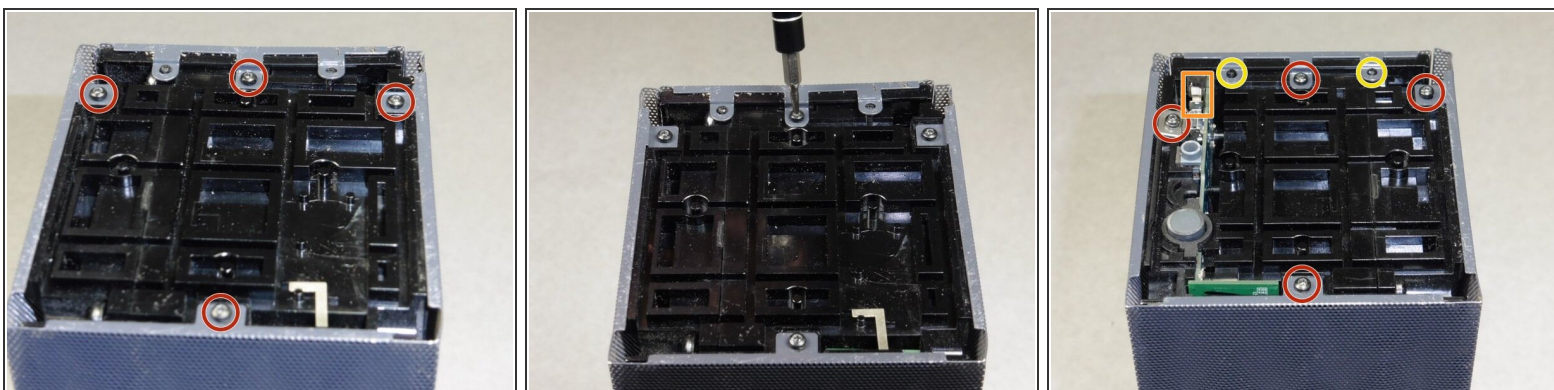
- Remove both end caps by putting a plastic opening tool in the center of the seam. Work around the edges to pry the end caps off completely.
- ⓘ Due to interior clips holding the end caps in place, use caution when applying force.

Step 2



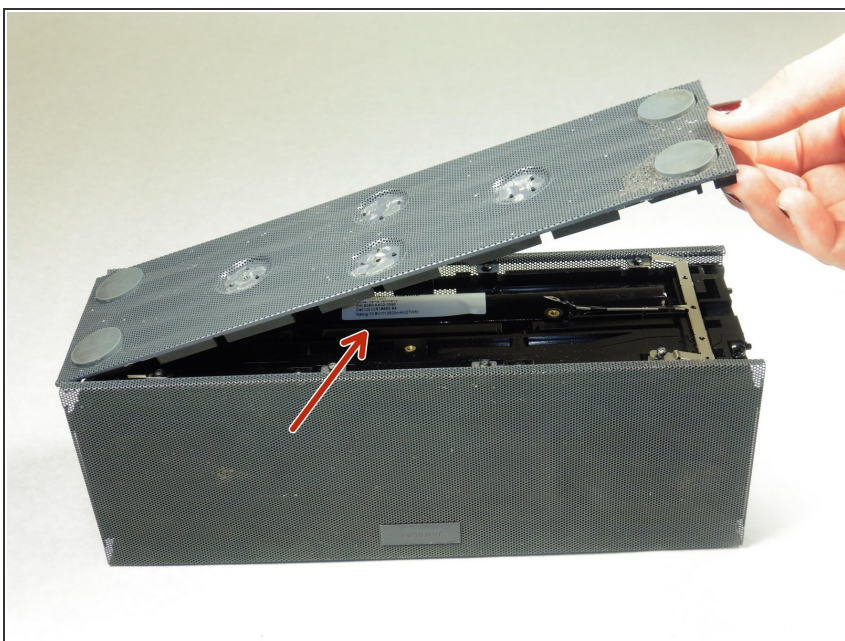
- Turn the Jambox upside down. Peel the indicated rubber tabs off, using a plastic opening tool if necessary.
- ⓘ You may want to only take the tabs half way off to avoid re-gluing when reassembling.
- Remove the three T6, 7.0 mm screws under each rubber tab.
- ✦ Because the screws are a different length, set the screws aside.

Step 3



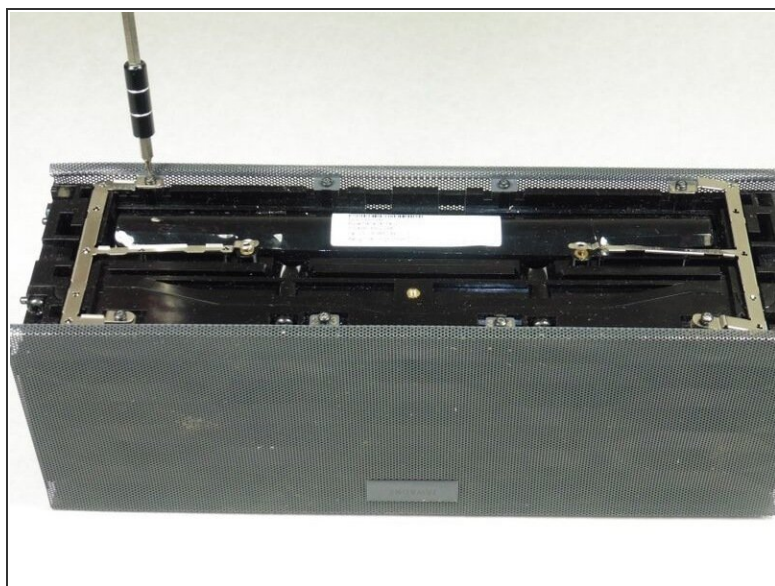
- With the Jawbone logo facing towards you and with correct orientation, place the Jambox with the left end cap facing upward.
- Unscrew indicated T6 9.7 mm screws.
- Gently loosen the tabs from their anchor points so the bottom may be removed.
- Flip the Jambox so the other end cap is facing up. The USB cable is on this side (metal grounding clip, indicated in orange). Repeat the above two steps.

Step 4



- Pry up the bottom panel by lifting from the device.
- Pull the bottom up. This may take a bit of force as the bottom is glued to device.
- Once removed, the battery will now be visible.

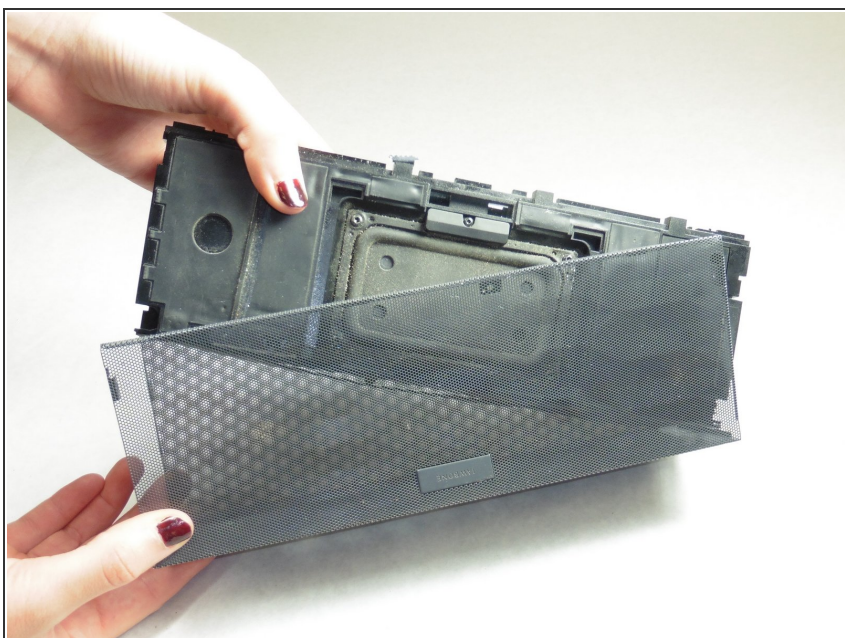
Step 5



i Before unscrewing, take a picture of the top view. That way, when you're reassembling the device, you'll know the orientation of the metal grounding plates.

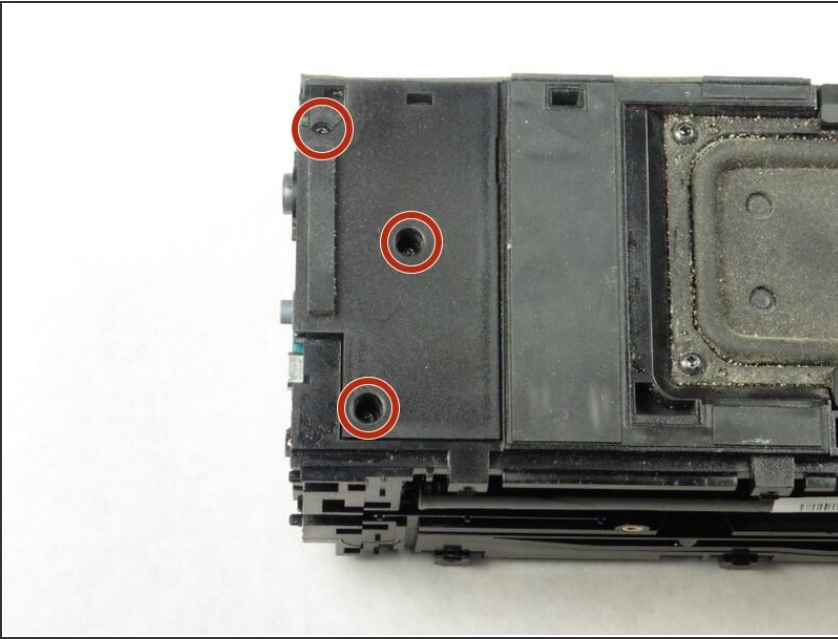
- Unscrew the eight indicated T6 9.8 mm screws. Remove metal grounding plates.

Step 6



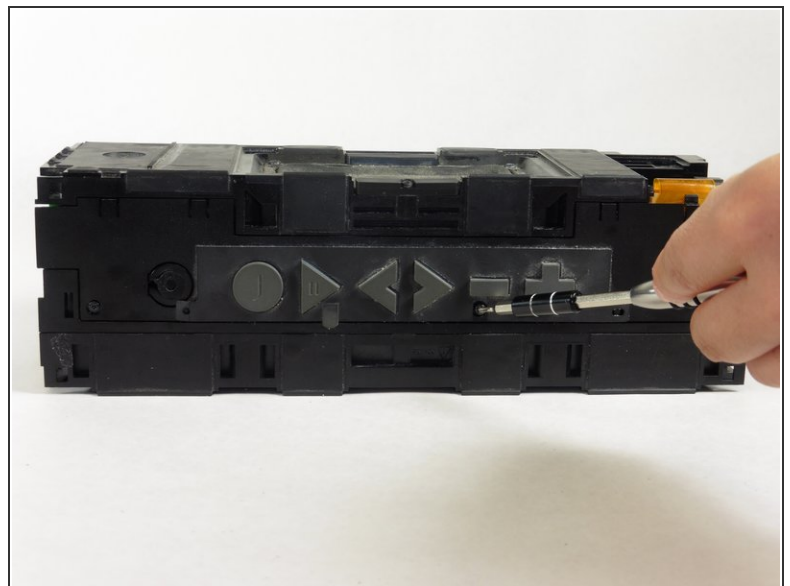
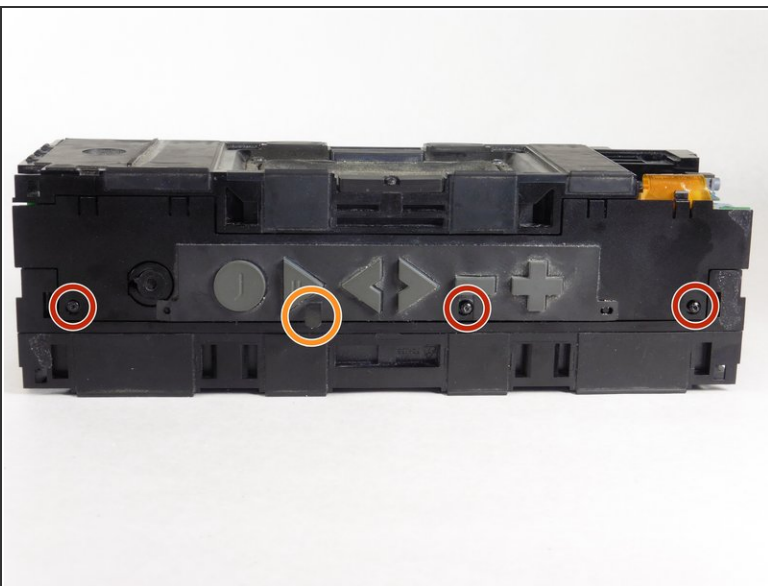
- Once all eight screws are removed, pry the sides of the Jambox to lift the body from it's shell.

Step 7



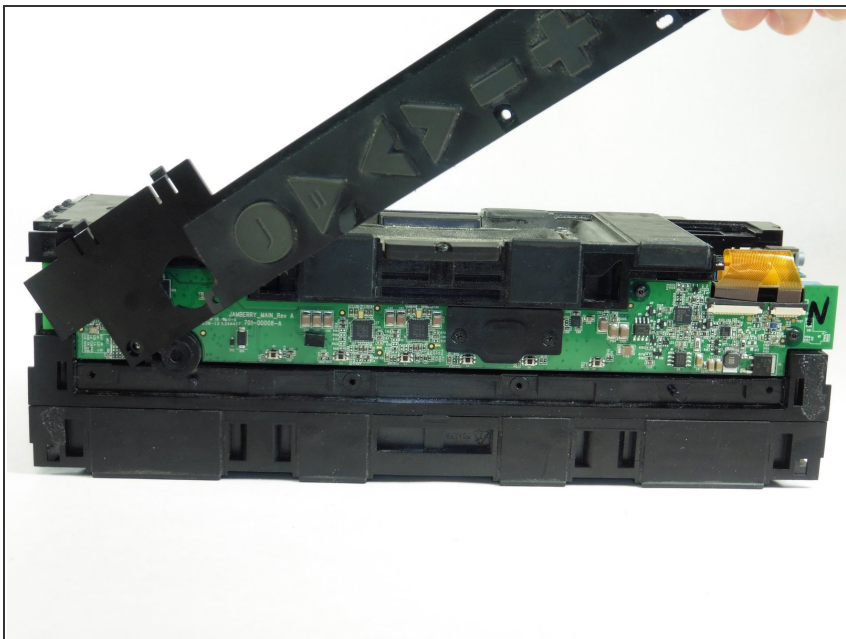
- With the battery facing forward, remove the three indicated T6 9.5 mm screws.
- Once the screws are removed, lift up the small plastic plate, revealing the auxiliary board underneath.

Step 8 — Button Panel



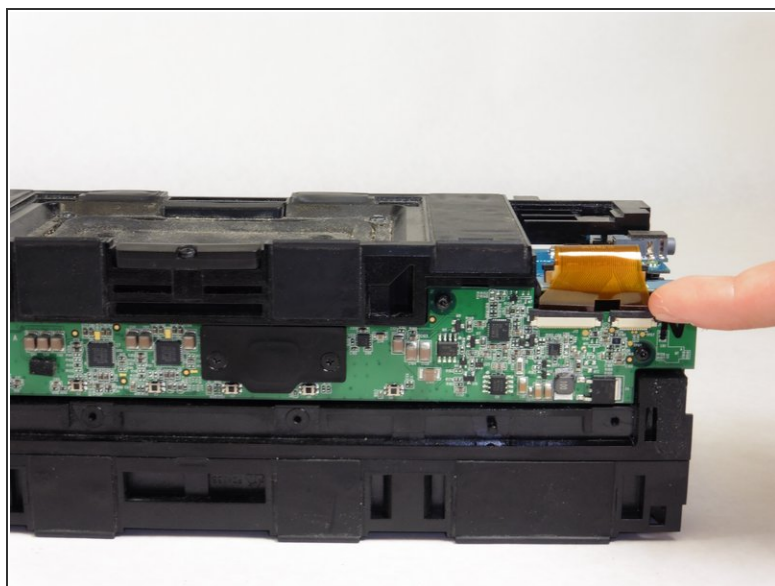
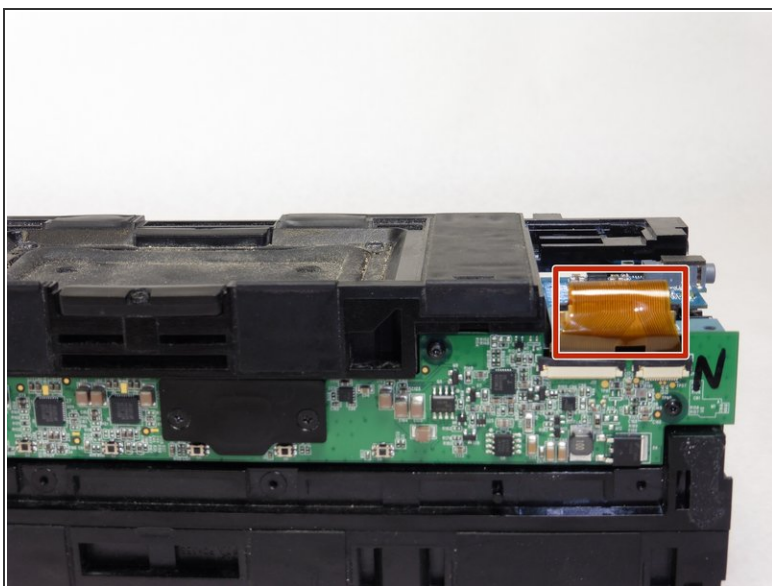
- Turn the Jambox so that the button panel is visible.
- Remove the indicated screws, T6 9.6 mm.
- *i* There is a small plastic flap obscuring the view of one of the screws, indicated in orange. In order to unscrew it, simply lift the flap out of the way.

Step 9



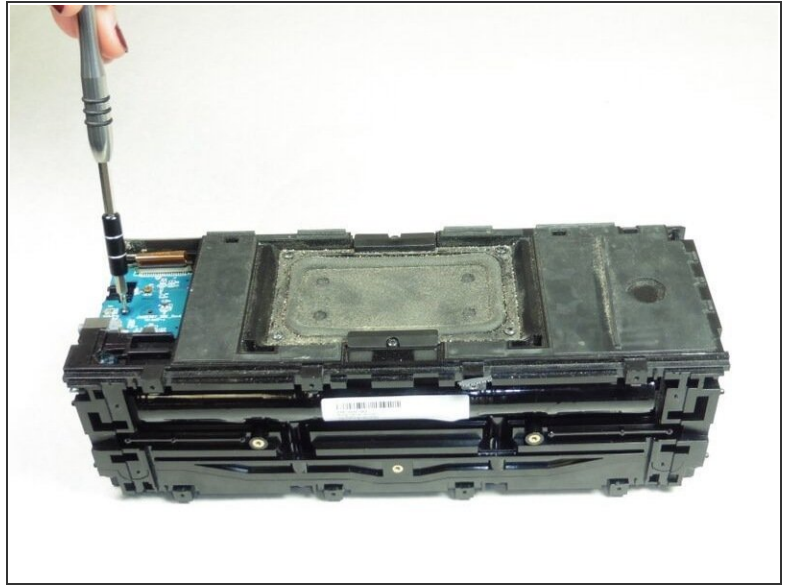
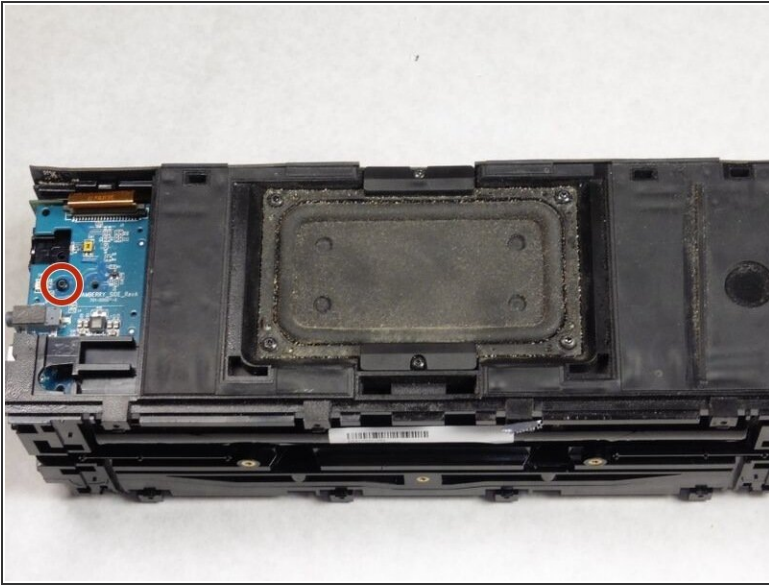
- Pop off the button panel.

Step 10



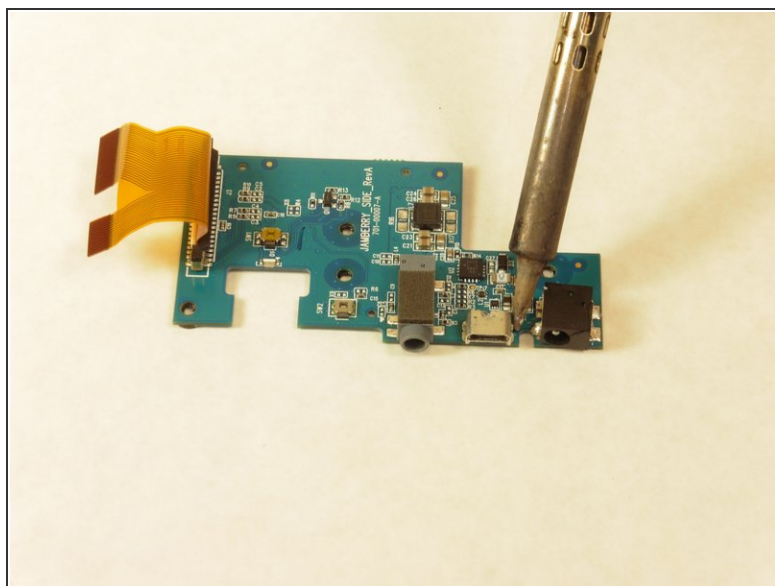
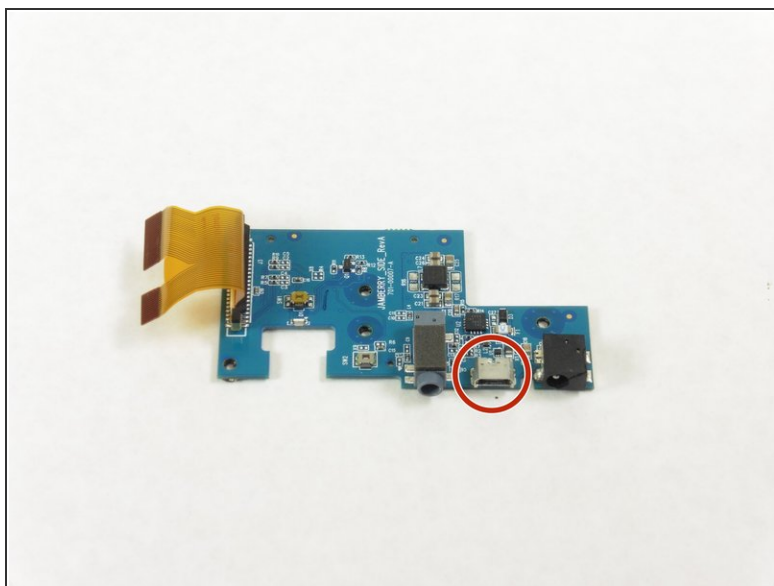
- Remove the colored ribbon that connects the green button circuit board to the blue auxiliary board by using your finger to lift the small black tabs that clamp down the ribbon.

Step 11 — Micro USB Port



- Remove the indicated T6 7.4 mm screw holding the auxiliary board in place.
- Carefully lift the auxiliary board up and off to the side.

Step 12



- With the auxiliary board removed, use a soldering iron to heat the metal attaching the Micro USB port (indicated on the image).
 - Remove the Micro USB port.
- ⚠ Exercise caution when handling the soldering iron due to extreme heat.

To reassemble your device, follow these instructions in reverse order.