



Visual Land Prestige 10 Digitizer Replacement

Written By: Connor Reese



TOOLS:

Magnetic Project Mat (1)

Phillips #00 Screwdriver (1)

Phillips 00 Screwdriver Spudger Plastic

Opening Tools Magnetic Mat and Tweezers
(1)

iFixit Opening Tool (1)

Soldering Iron (1)

Spudger (1)

Step 1 — Back Case



- Remove the 3mm screws from bottom of tablet with the precision screwdriver and place on [magnetic mat](#). label where they came from.

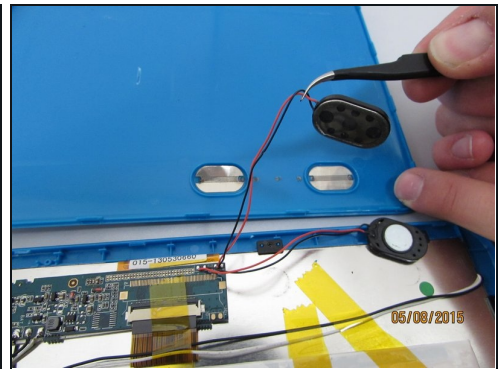
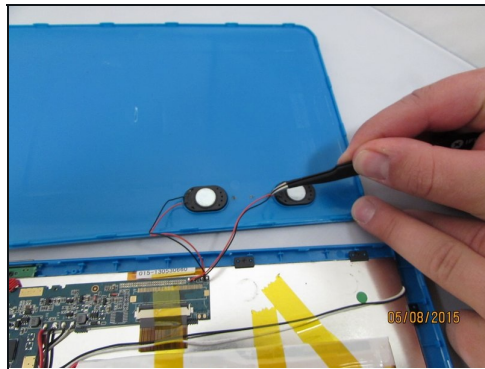
ⓘ All screws throughout this guide are the same 3mm size.

Step 2



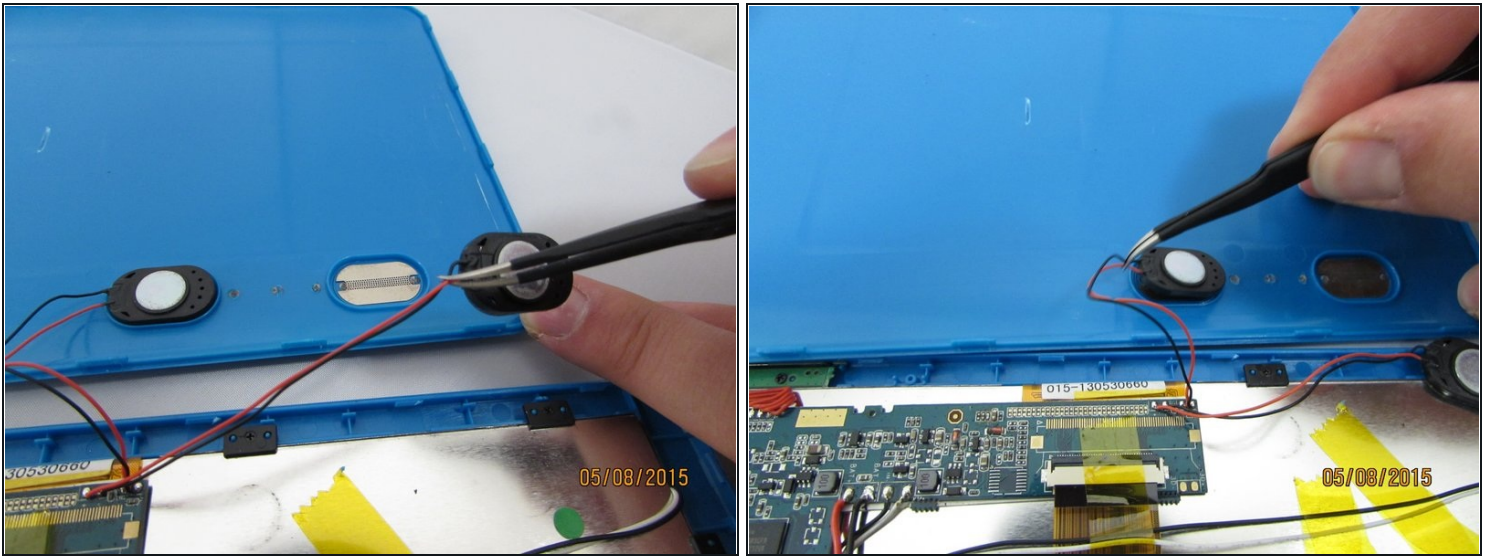
- Using the spudger, create a small opening to be used to open the back case.
- While holding the case open, insert the plastic opening tool to get a larger opening.
- Once you have a slight opening, insert the spudger and work around the edges, separating the back plate from the front.

Step 3



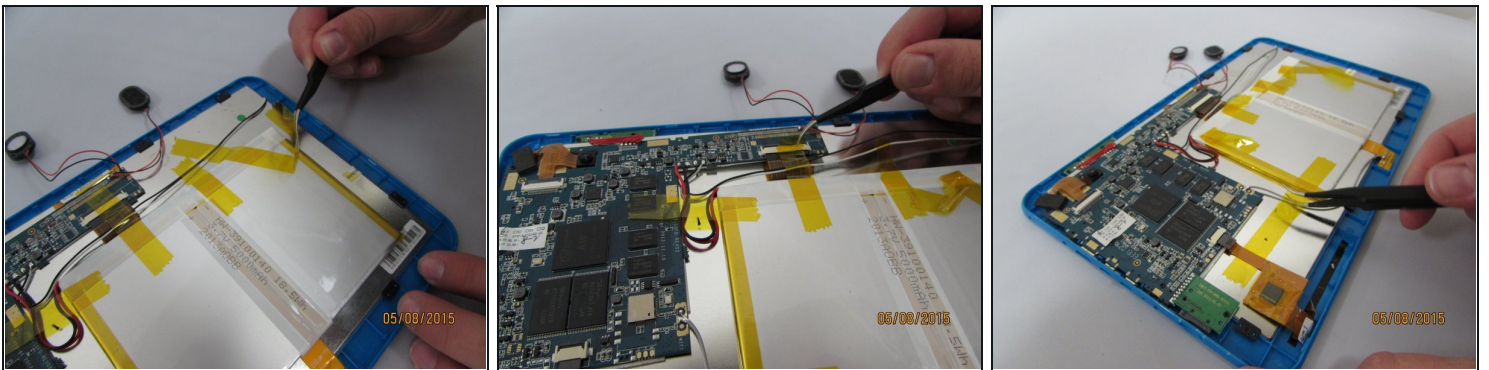
- now that the case is open, carefully remove the speakers and set aside.

Step 4



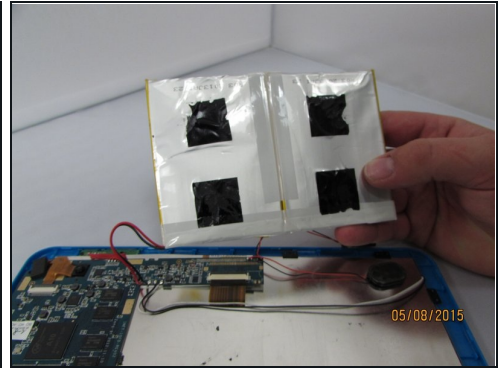
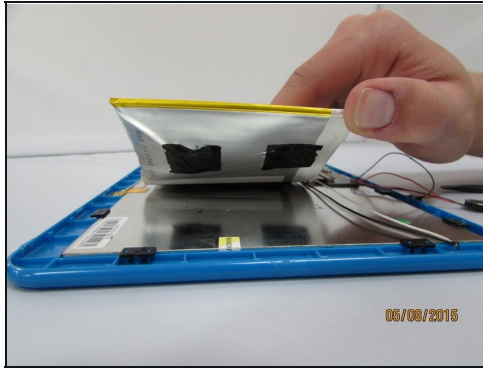
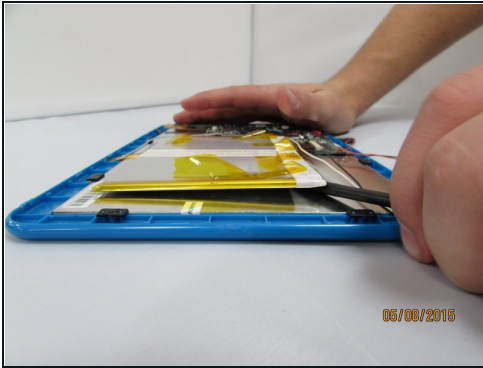
- Gently remove the speakers from the back case with tweezers and set the case aside.

Step 5 — Battery



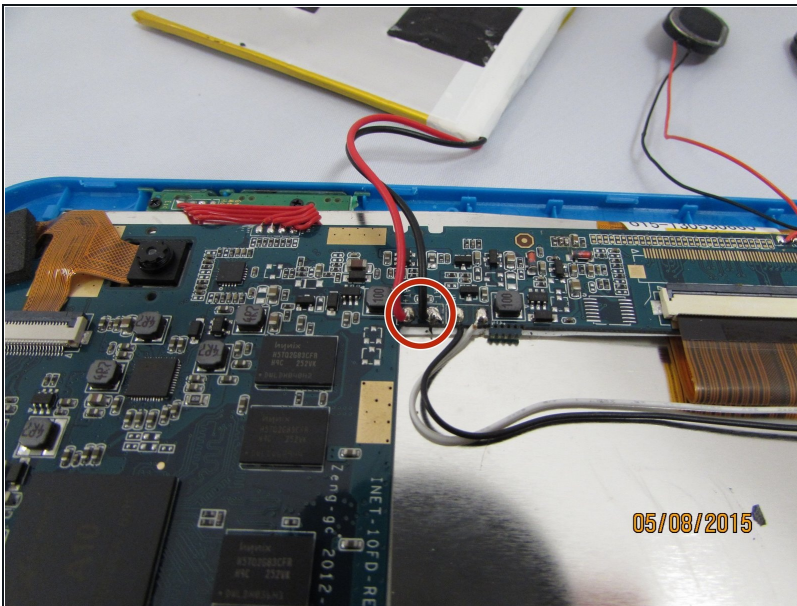
- Remove yellow tape from surrounding components.

Step 6



- insert the spudger and gently work around and underneath the battery.
- With the battery separated from the LCD Display, set it aside.
- ① The battery is held down by very strong adhesive.

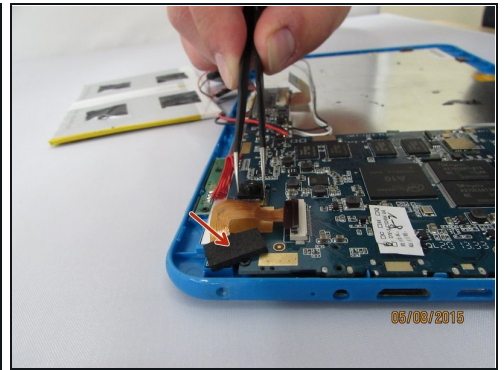
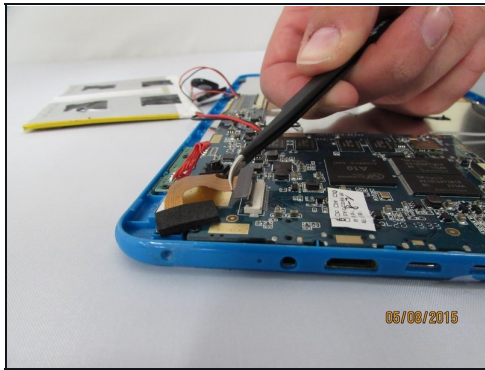
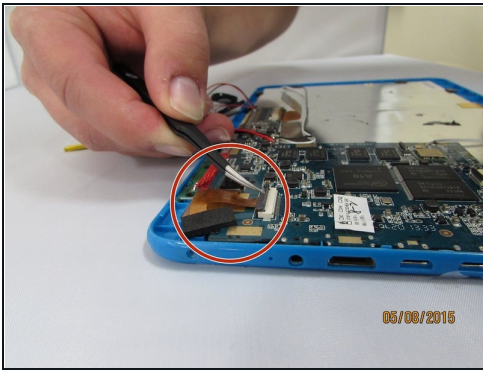
Step 7



- Desolder and remove the 2 wires from the motherboard.

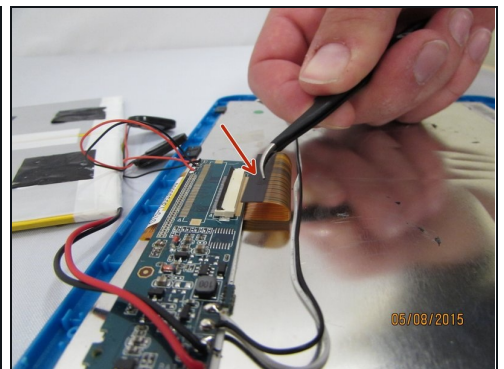
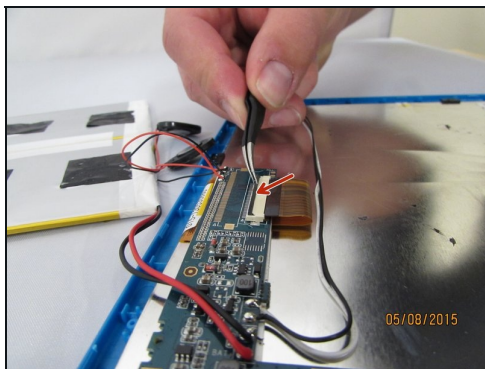
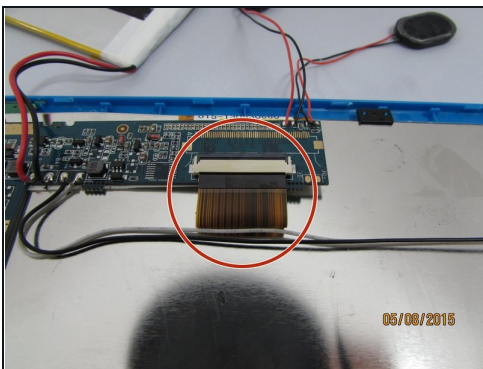
⚠ Use caution when desoldering to avoid damage to yourself or to the components.

Step 8 — Front Facing Camera



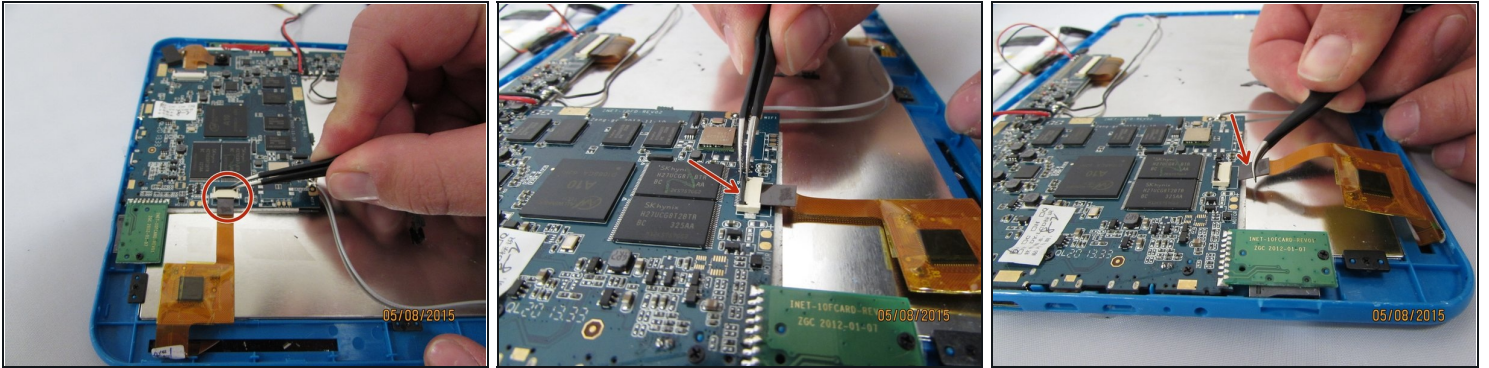
- Locate the Camera Housing. Gently grip and lift the small black tab until you feel an audible click.
- Gently remove the connector by pulling straight out, gripping the black connector head or as close as possible.
- Gently grip and pull up the front camera, covered by protective adhesive foam.
- Set aside the Camera housing.

Step 9 — Motherboard



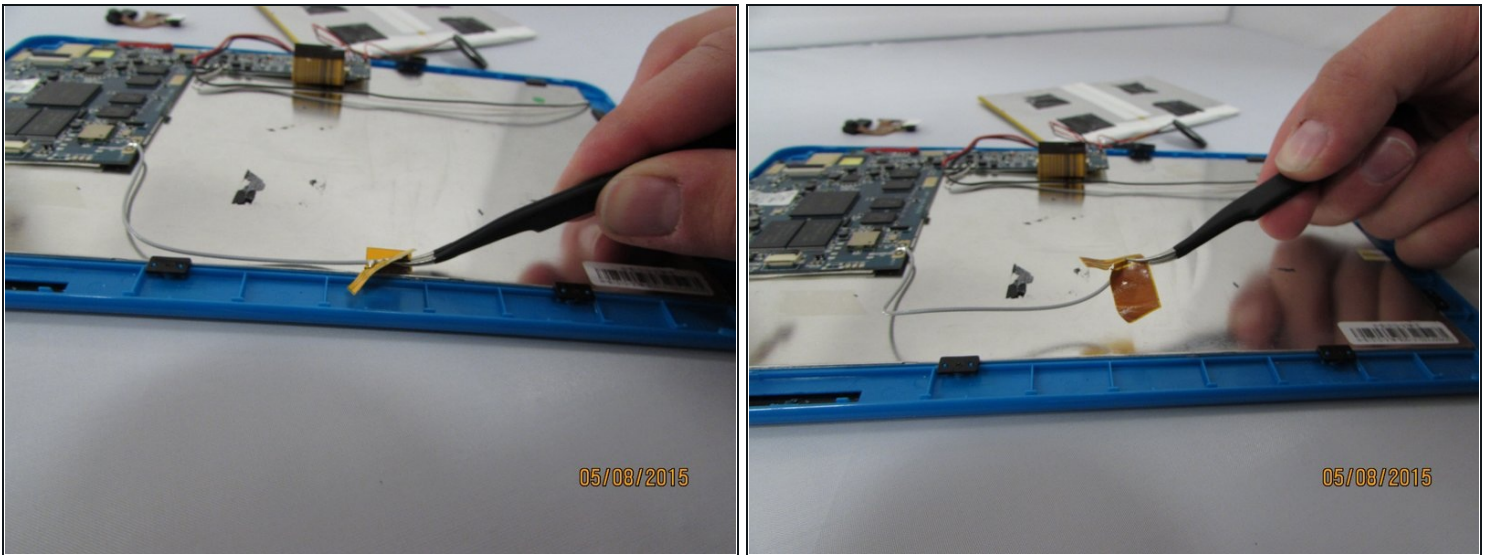
- Locate the LCD Connector.
- Using tweezers, grip the small black tab connected to the white plastic.
- Gently lift the tab towards you until it clicks.
- Remove the connector by pulling straight out, gripping the black connector head.

Step 10



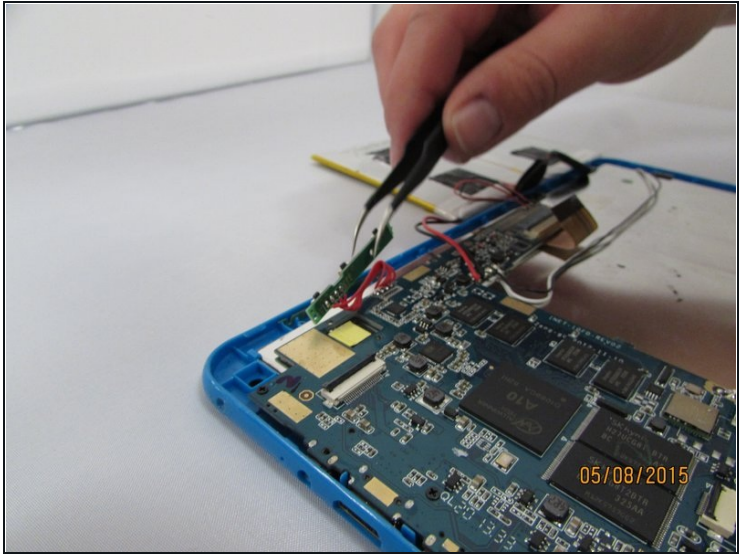
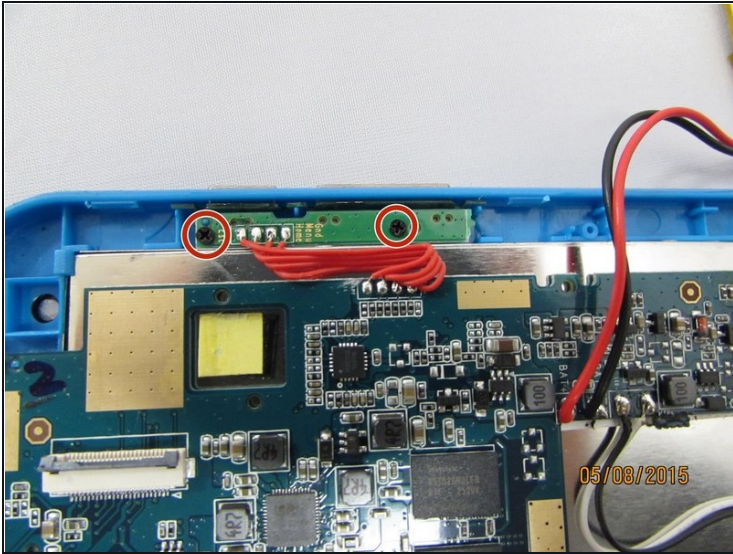
- Locate the Touchscreen connector and grip the forward-most black tab with the tweezers.
- Lift the tab towards you until you feel an audible click.
- Gently remove the connector by pulling straight out, gripping the black connector head.

Step 11



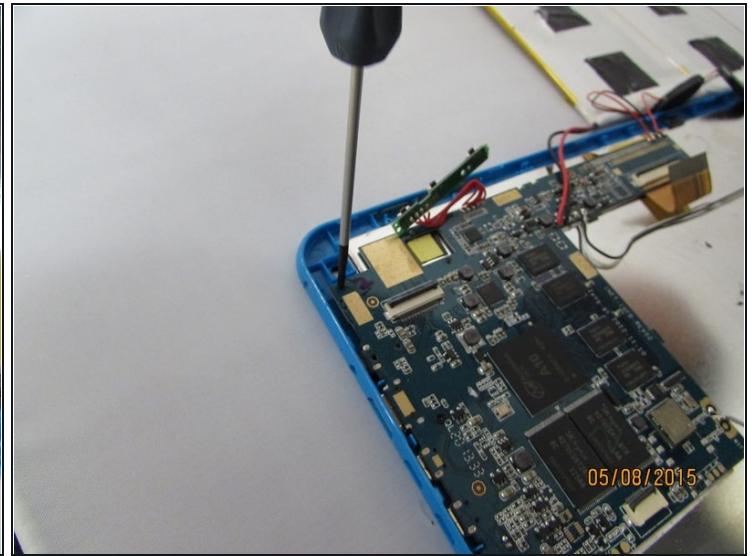
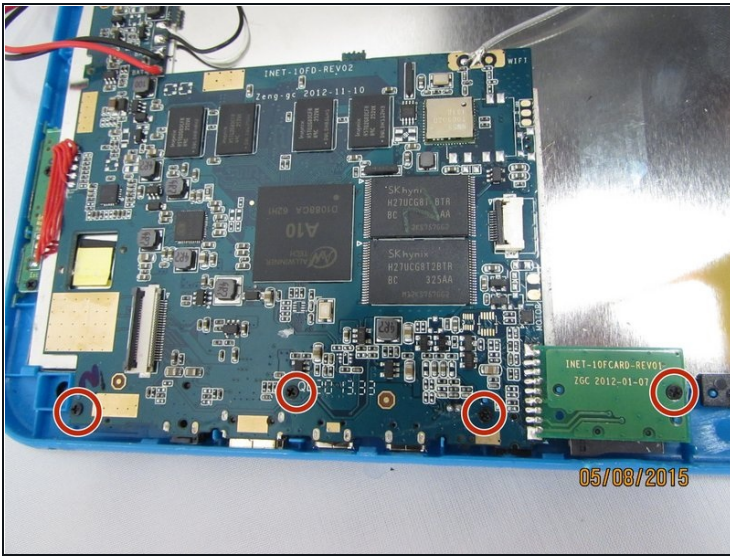
- Gently lift up the WiFi antenna and set aside.

Step 12



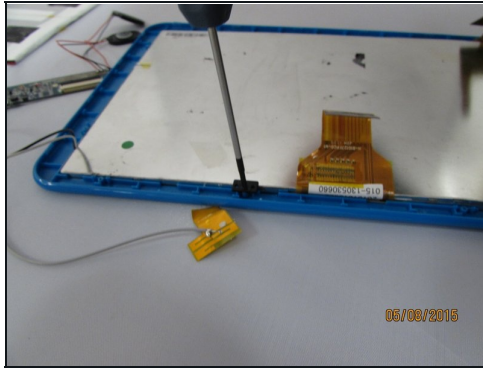
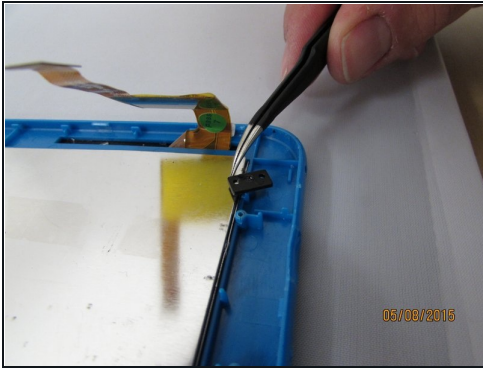
- Locate and remove the screws holding the volume and hold button controller. Set screws aside on magnetic mat and label them.
- Gently lift up on the controller and leave it hanging loose.

Step 13



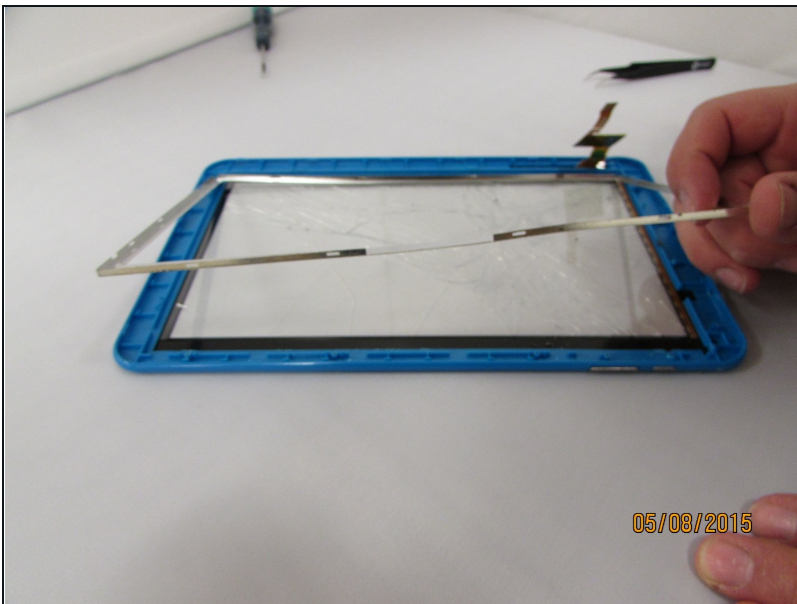
- Remove screws located on motherboard.
- Place on magnetic mat and label them
- Gently remove the Motherboard and any wires connected to it and set it aside on a static free surface.

Step 14 — LCD Display



- Remove the screws and plastic tabs holding the LCD Display and place them on the magnetic mat. Label them.
 - Gently remove the LCD Display and backlight by lifting up the LCD Connector with your fingers.
 - Set aside the LCD Assembly.
- ⓘ The LCD display and backlight are separated from one another. Be sure to remember how they are aligned when putting the device back together.

Step 15 — Digitizer



- Simply lift up the loose metal frame and set aside.

Step 16



- Be extremely careful removing the touchscreen, avoiding sharp glass and hot surfaces.
 - Using the heating pad, heat the edges of the touchscreen to loosen the adhesive.
 - using the spudger, slowly and gently work around the edges, removing the touchscreen.
- ① The Tablet we used came with a shattered screen, making this step much more difficult.
-

To reassemble your device, follow these instructions in reverse order.