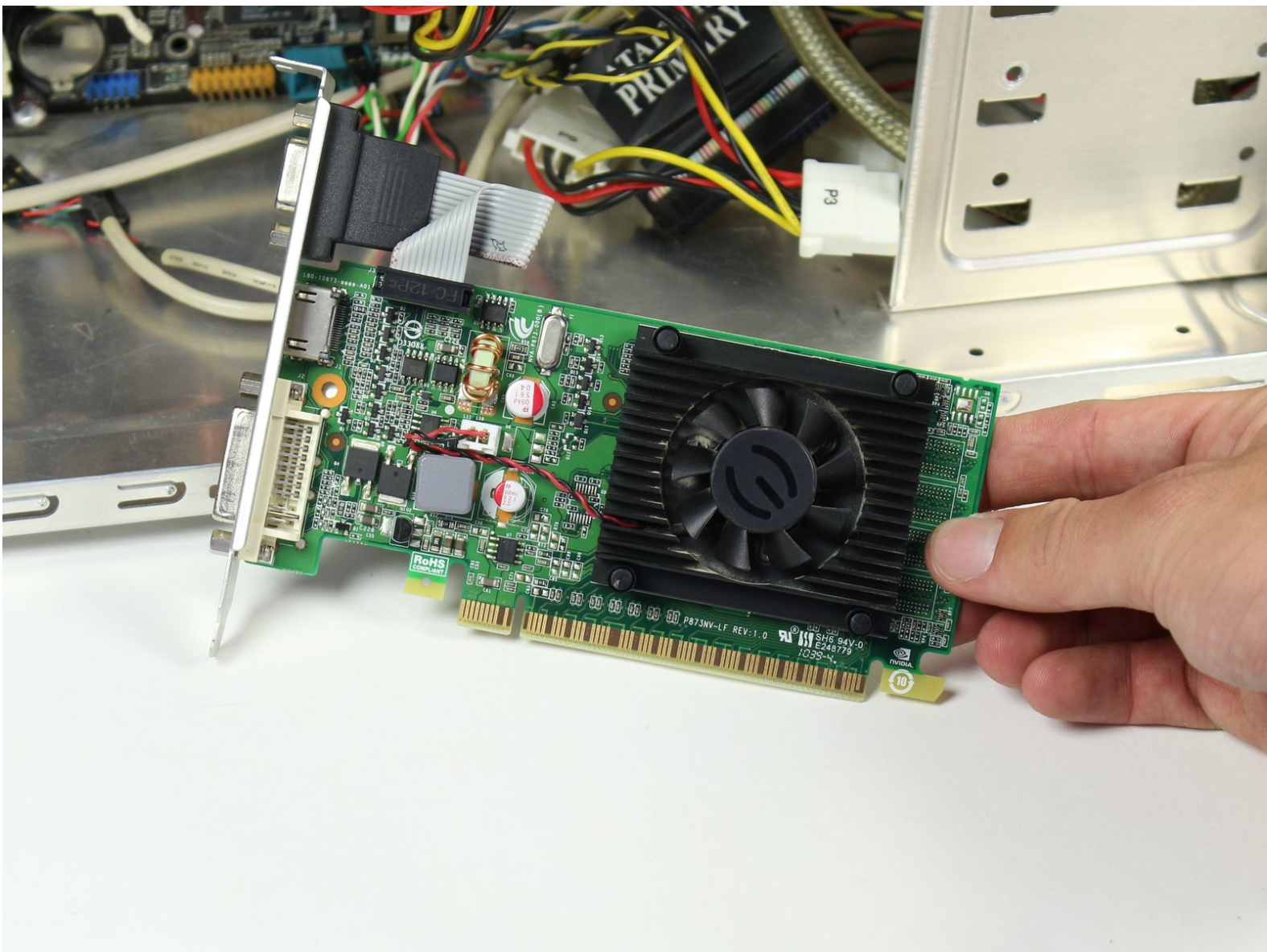




Desktop PC Graphics Card Replacement

This guide will show the steps to properly remove and replace the graphics card in a desktop computer.

Written By: David Lennon



INTRODUCTION

A computer graphics card allows a computer to plug into a monitor and be displayed. Graphics cards are vital components for computers. Also, replacing a graphics card can help your computer run more quickly and smoothly.



TOOLS:

- [Phillips #2 Screwdriver](#) (1)
-

Step 1 — Left Panel




- ⚠ Unplug the computer from the power supply before any maintenance or disassembly.
- Remove the two Phillips #2 head 5mm screws from the back side of the computer case. You only need to remove the screws that hold down the panel.
- ⓘ These screws can usually be removed by hand.
- ⓘ Be sure to wear an anti-static bracelet or use an anti-static mat to ensure important components are not damaged by static electricity.

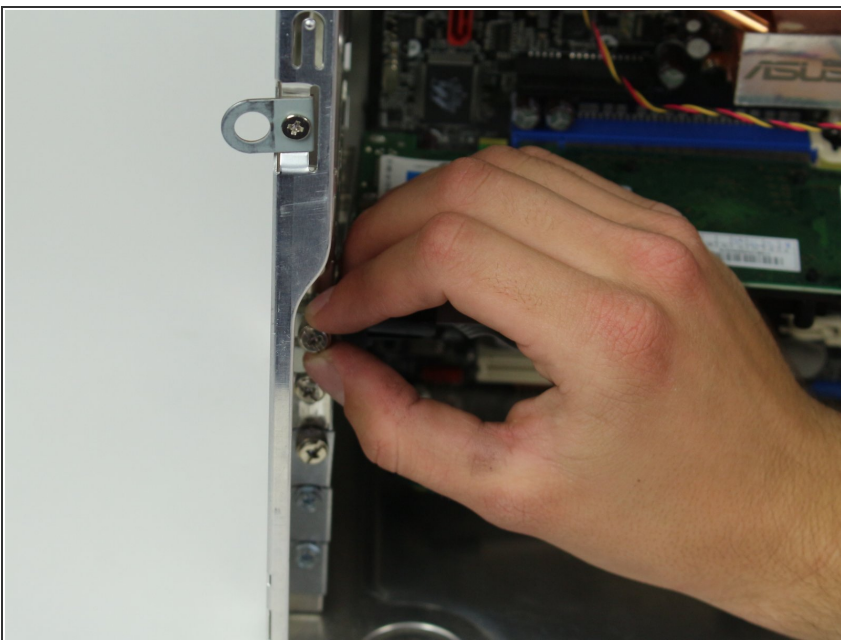
Step 2



- Next, remove the side panel of the computer case to allow access into the computer. Slide the panel towards the back of the computer and lift it up to remove.

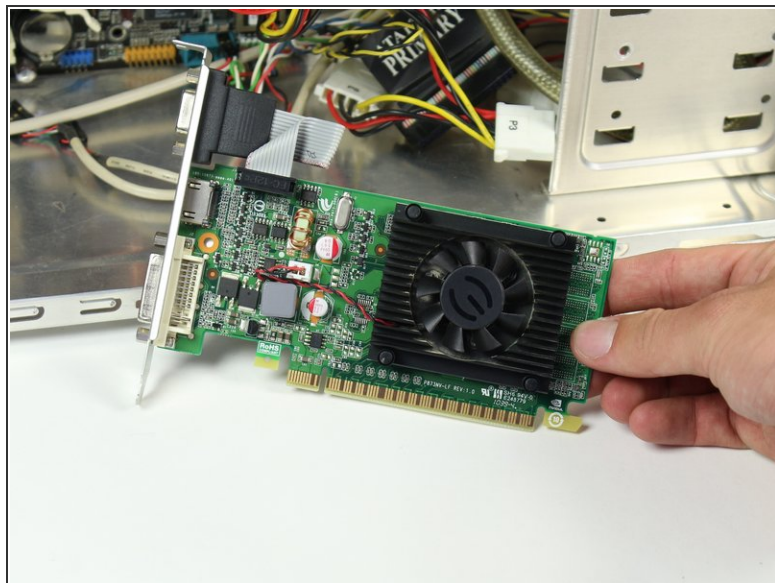
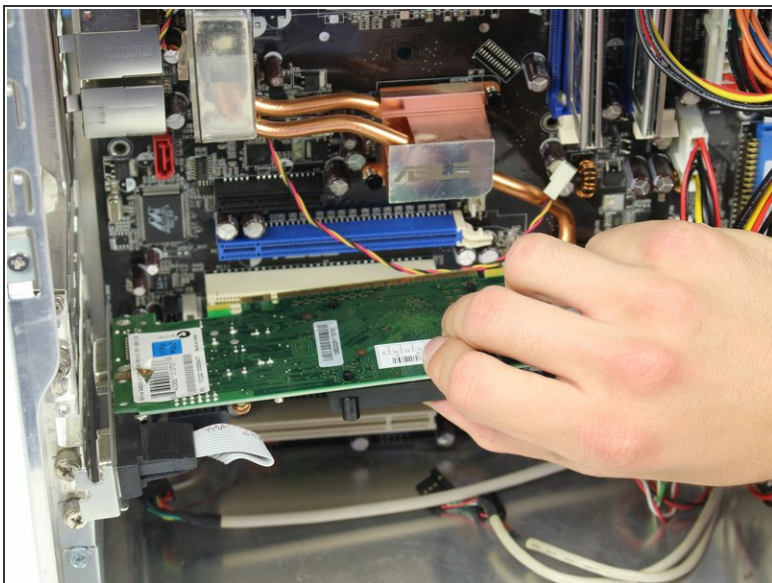
 If there is a fan mounted on the side panel, make sure to unplug the cable before fully removing the panel.

Step 3 — Graphics Card



- Remove the Phillips #2 head, 5mm screw holding the graphics card in place.
- ⓘ Make sure that you have grounded yourself so that upon removal of the graphics card you do not accidentally shock the circuit board and damage it.

Step 4



- Press the latch on the side of the connector area to unlock the graphics card, and carefully slide the graphics card out from its slot in the computer.
- A good technique is to lay the computer onto its side, push the latch down and lift the graphics card out.

To reassemble your device, follow these instructions in reverse order.