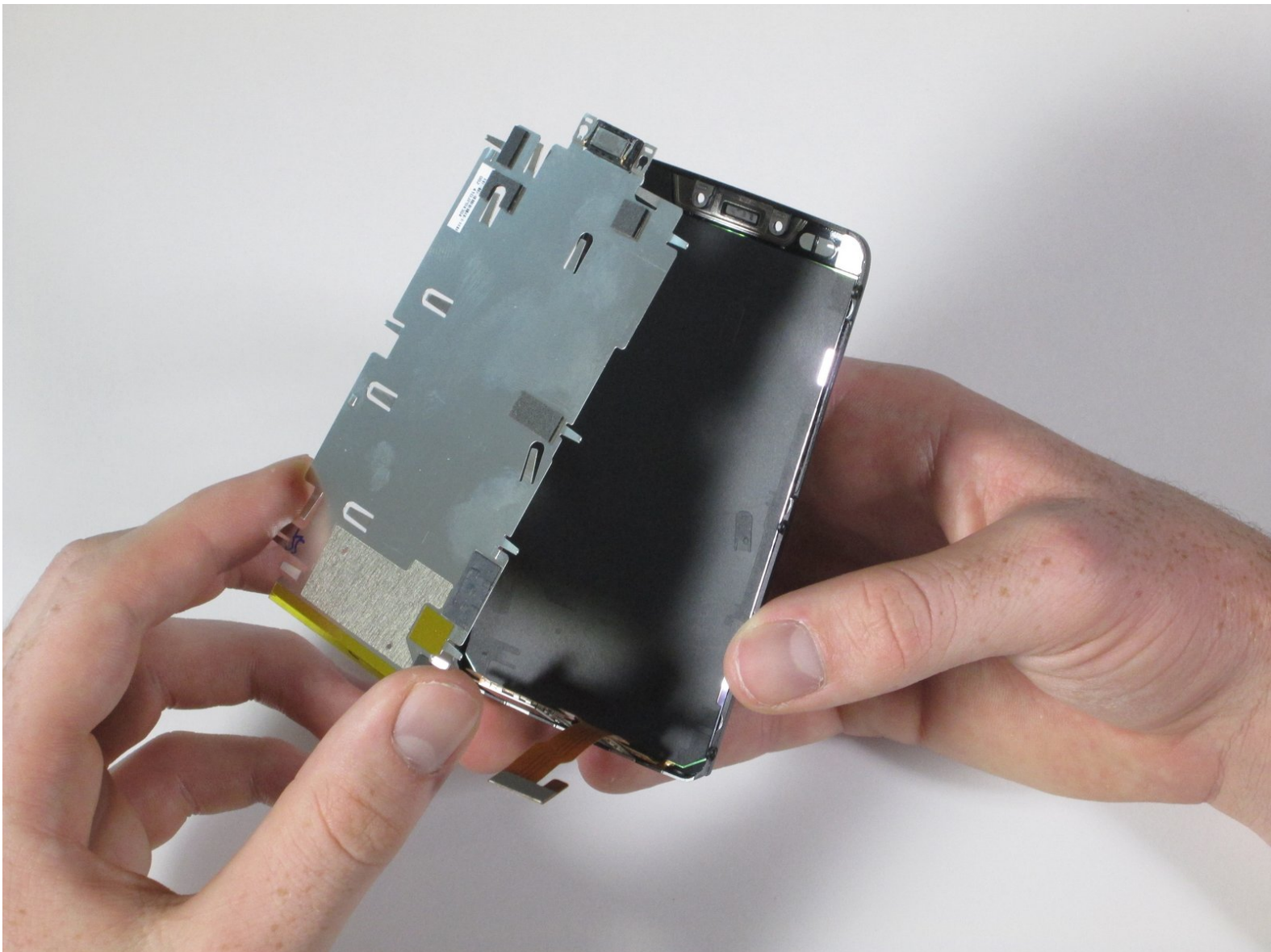




# Motorola Droid RAZR M Display Replacement

Use this guide to remove or replace the display in your Motorola Droid RAZR M.

Written By: Connor HennesseyNiland



---

## INTRODUCTION

This guide will walk you through opening your Motorola Droid RAZR M and removing the display from the front assembly. Throughout the process, many small screws will be accumulated, so be sure to keep track of which screws came from the various locations.

In order to access the display, the speaker must first be removed. The speaker can be easily pulled out of the device once the flat orange wire that is part of the display is detached from the metal plating of the speaker. From there, the speaker can be removed once the adhesive is taken out and two metal spines are unhooked. What remains will be the display.



### TOOLS:

- [iFixit Opening Tools](#) (1)
  - [T3 Torx Screwdriver](#) (1)
  - [T4 Torx Screwdriver](#) (1)
-

## Step 1 — Front Assembly



- Open the small latch on the left side of the device by lifting gently with your finger, exposing the SIM card and microSD card slots.
- If either of these cards are present, remove them to prevent damaging them while taking apart the phone. Our device does not have either.
- Close the latch once the two cards are removed.

## Step 2




- Remove the six 4mm T3 Torx screws. There are 3 on each side of the device.

### Step 3



- Run the plastic opening tool under the bottom edge of the phone to detach the small plastic cover below the Verizon logo.
- It will take some force to remove this piece. Work around the bottom corners to unlatch the two hooks holding the piece in place.

 The small plastic hooks can break during removal. Be careful that you don't damage them, but it will take some force to get them undone.

- Once the plastic cover is detached, pull the piece away with your fingers.

### Step 4



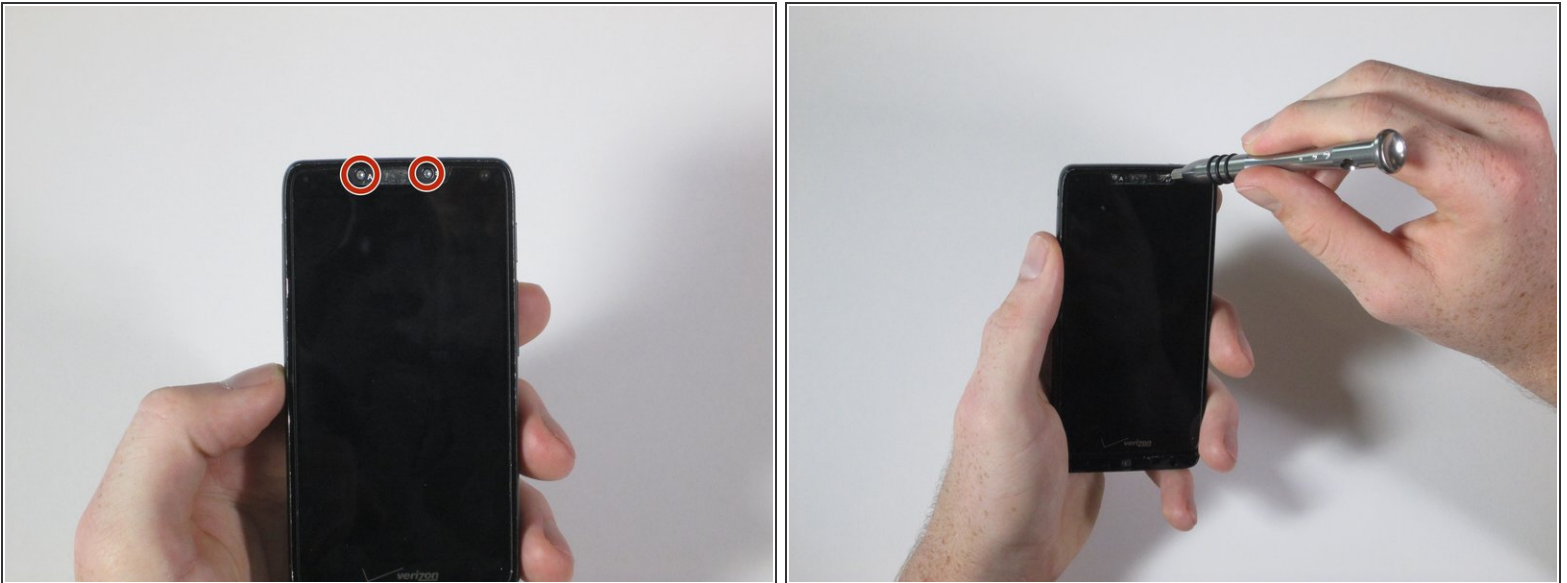
- Remove the three T4 Torx screws. There are three at the bottom of the device.

## Step 5



- Using the plastic opening tool, peel away the silver Motorola plate at the top of the phone. There is a fair amount of adhesive underneath, so you may have to pry it from a few different angles.
- As soon as you can get your finger underneath, pull away the silver plate.


## Step 6




- Remove the two 7mm T4 Torx screws at the top of the device.

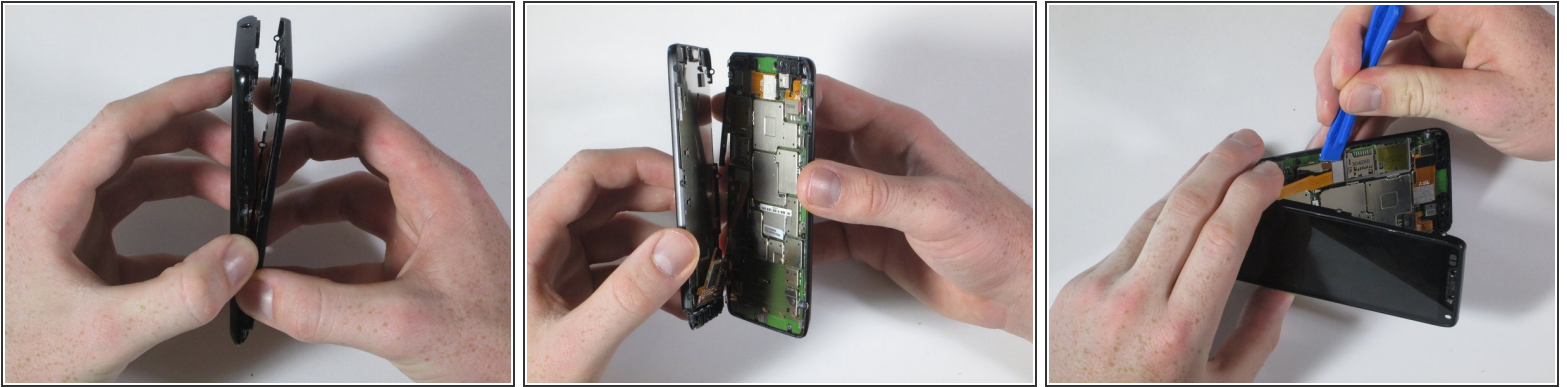
## Step 7



 When you detach the front from the back, don't pull the two pieces entirely apart. There is a flat orange wire that connects the two pieces that will be disconnected in the next step.

- Snap apart the two internal clips located on the top corners of the device, and the two clips in the bottom corners.
  - Run the plastic opening tool around the edge of the entire device to pry apart the front of the phone from the back.
-  There is a small black plastic piece located at the bottom of the front assembly. Do not worry if the strip falls off; just simply snap it back on and proceed.

## Step 8



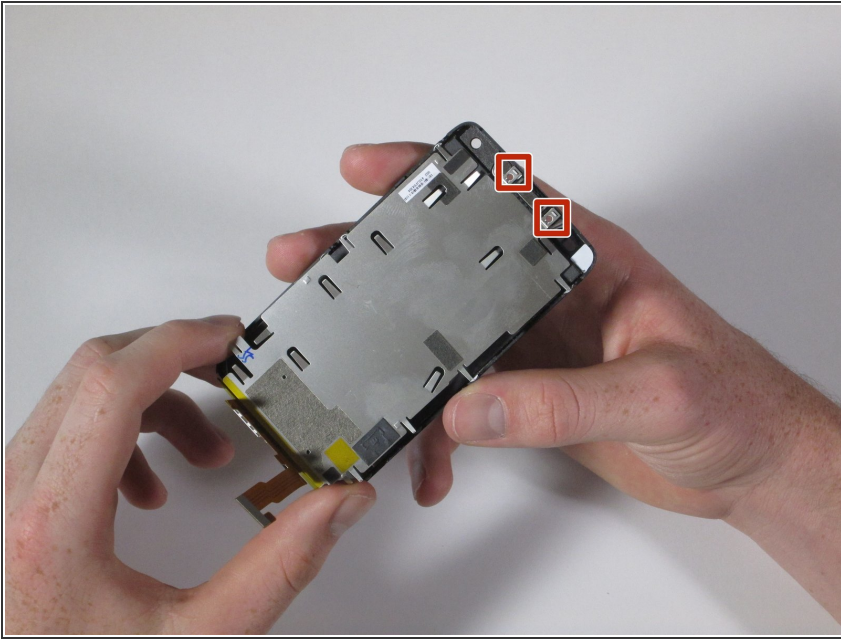
- Like a clamshell, slowly open the device from the top. Open the remainder of the device slowly while being mindful of the flat orange wire that connects the motherboard to the front assembly.
- Undo the snap connection in the lower left corner by inserting the plastic opening tool under the end of the orange wire connected to the motherboard. Lift gently.
- Once the snap connection is undone, pull apart the front assembly from the rest of the phone.

## Step 9 — Display



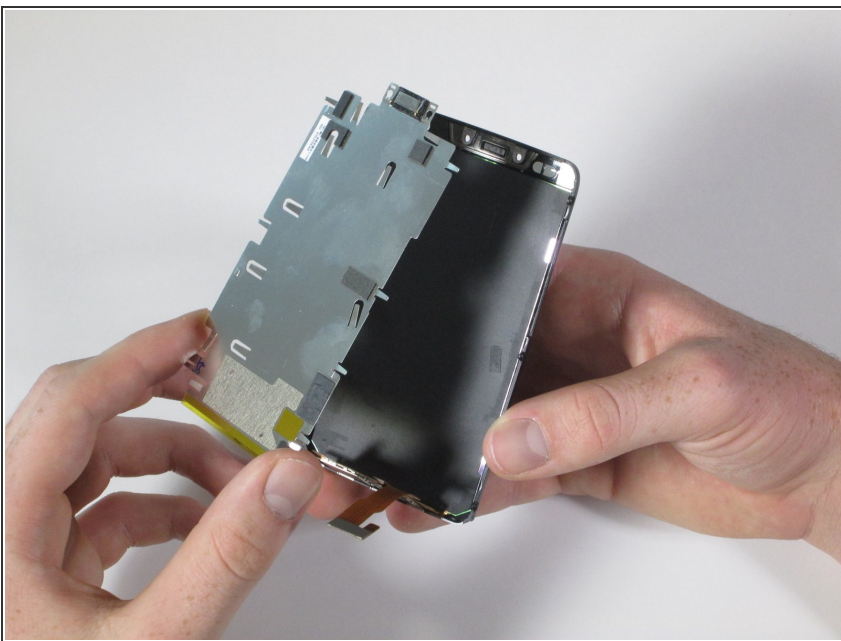
- Holding the front assembly, carefully peel back the flat orange wire that is attached to the display from the silver backing. The silver backing is the plating where the speaker is located."

## Step 10



- Remove the speaker from the display by unhooking it from the two small metal spines on either side of the speaker marked by two the red squares.
- In addition to the two metal spines, there is adhesive underneath the top of the silver plating of the speaker attaching it to the display.

## Step 11



- Carefully lift the silver plating out of the metal spines, separating it from the display.
- You will then be left with display with the orange wire attached.

To reassemble your device, follow these instructions in reverse order.