



Repairing a Wooden Steam Locomotive Toy

This repair guide shows you how to repair a broken smoke stack on a wooden toy steam locomotive

Written By: claudius



INTRODUCTION

The tools and steps in this guide can be applied by a FiYer(Fix-it-Yourselfer) to repairing various wooden toys not just toy trains



TOOLS:

- [Sand Paper](#) (1)
100 grit

Step 1 — Smoke Stack



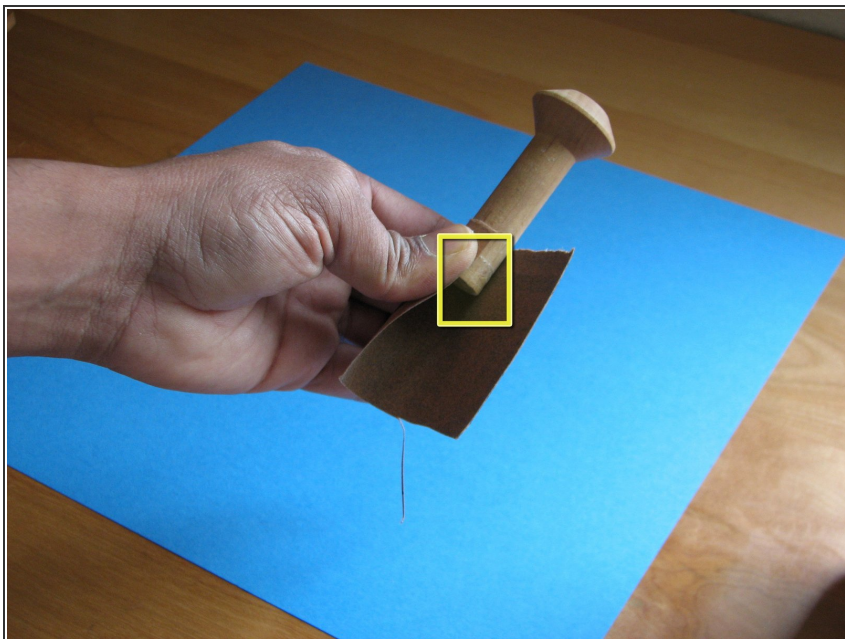
- Locate all the missing wooden parts of the toy.
- Clean the toy and parts so they are free from food and grime

Step 2



- Tools needed:
- - Sandpaper 150 grit
- - Good quality wood glue

Step 3



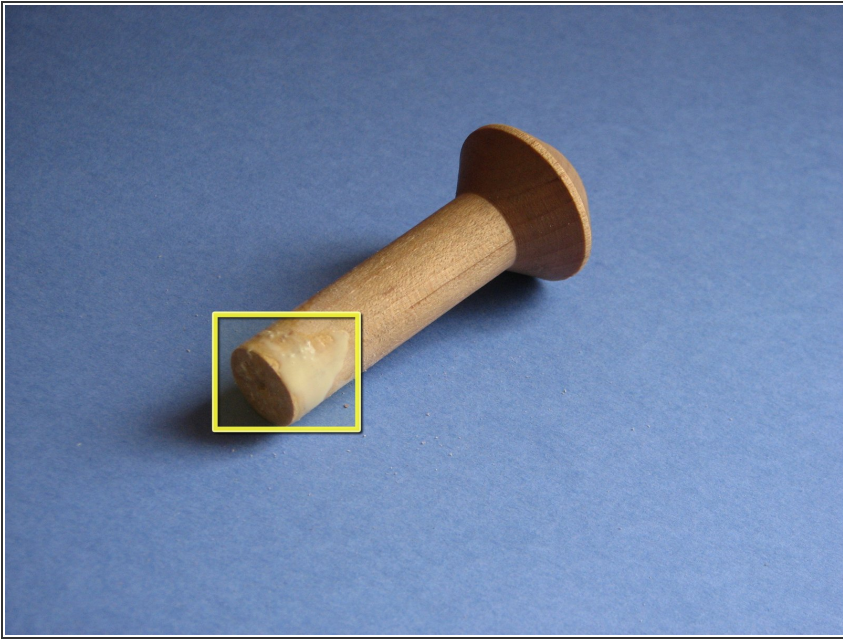
- Sand the part of the wooden smoke stack that is going to be fixed to the steam locomotive
- Clean the wood dust

Step 4



- Sanded and cleaned part free of dust and old glue

Step 5



- Apply a thin and even layer of wood glue to the sanded portion

Step 6



- Fix the smoke stack to the steam engine
- Clean the excess glue around the joint with a paper towel

Step 7



- Choo-choo, the steam locomotive is as good as new.

To reassemble your device, follow these instructions in reverse order.