



HP Mini 1000 Camera Board Cable Replacement

Written By: Walter Galan



INTRODUCTION

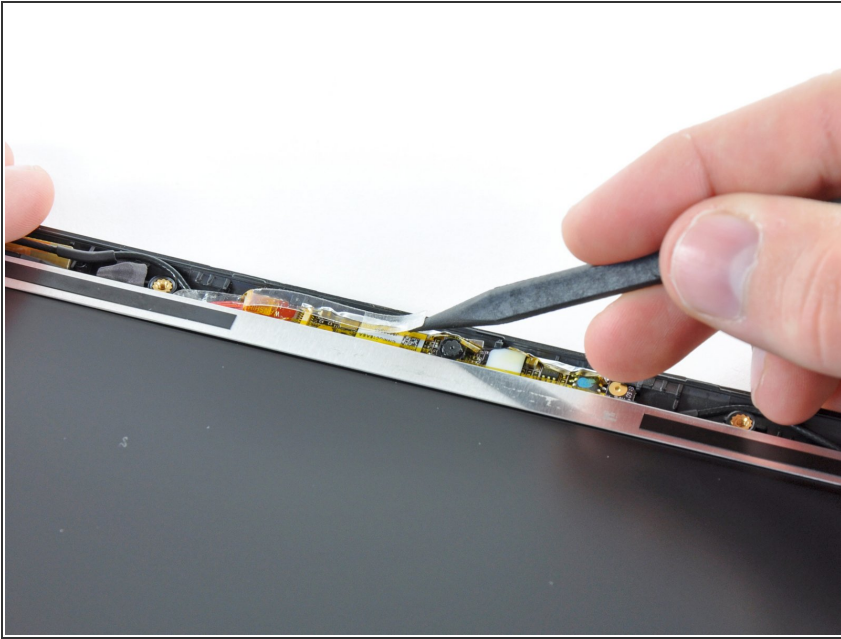
This guide is an internal prereq only.



TOOLS:

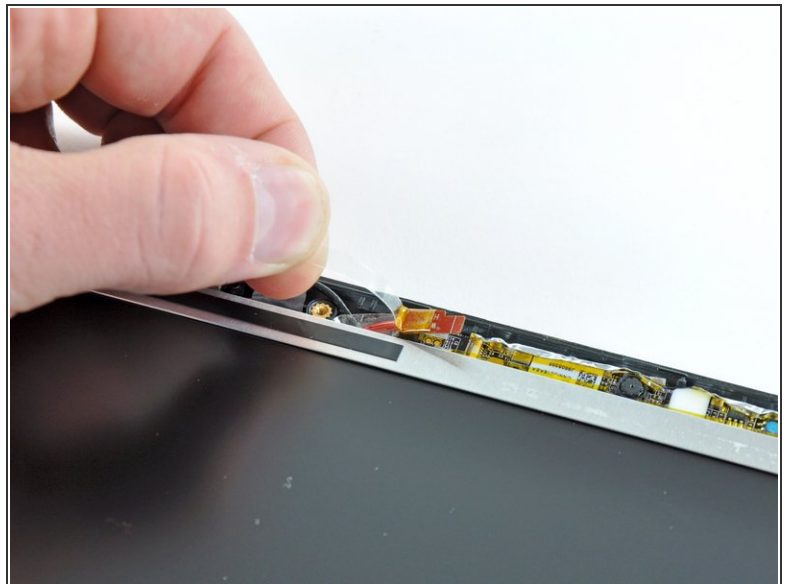
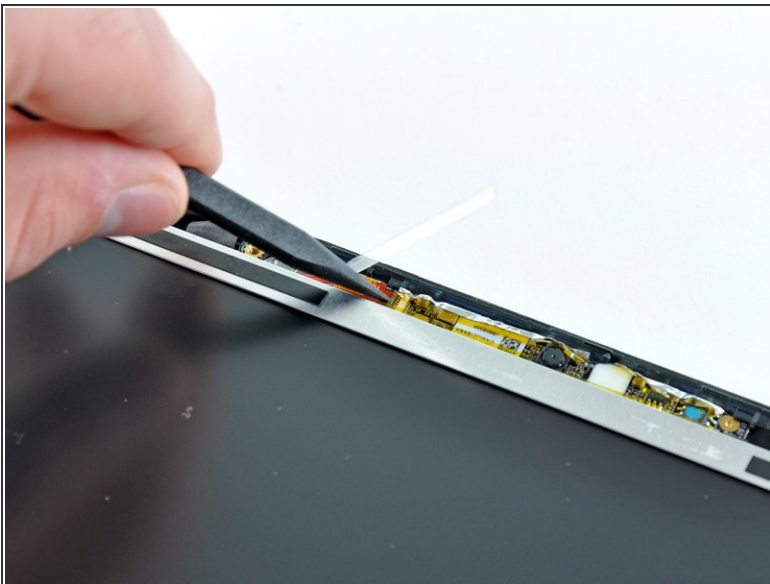
- [Spudger](#) (1)
-

Step 1 — Camera Board Cable



- Use the sharp end of a spudger to flip up the plastic flap that rests on top of the camera board cable ZIF socket.

Step 2



- Use your fingernail or the sharp end of a spudger to flip up the retaining flap on the camera board cable ZIF socket.

⚠ Be sure you are prying up on the retaining flap, not the socket itself.

- Pull the camera board ribbon cable out of its socket.

This document was generated on 2020-11-28 02:05:42 AM (MST).

To reassemble your device, follow these instructions in reverse order.