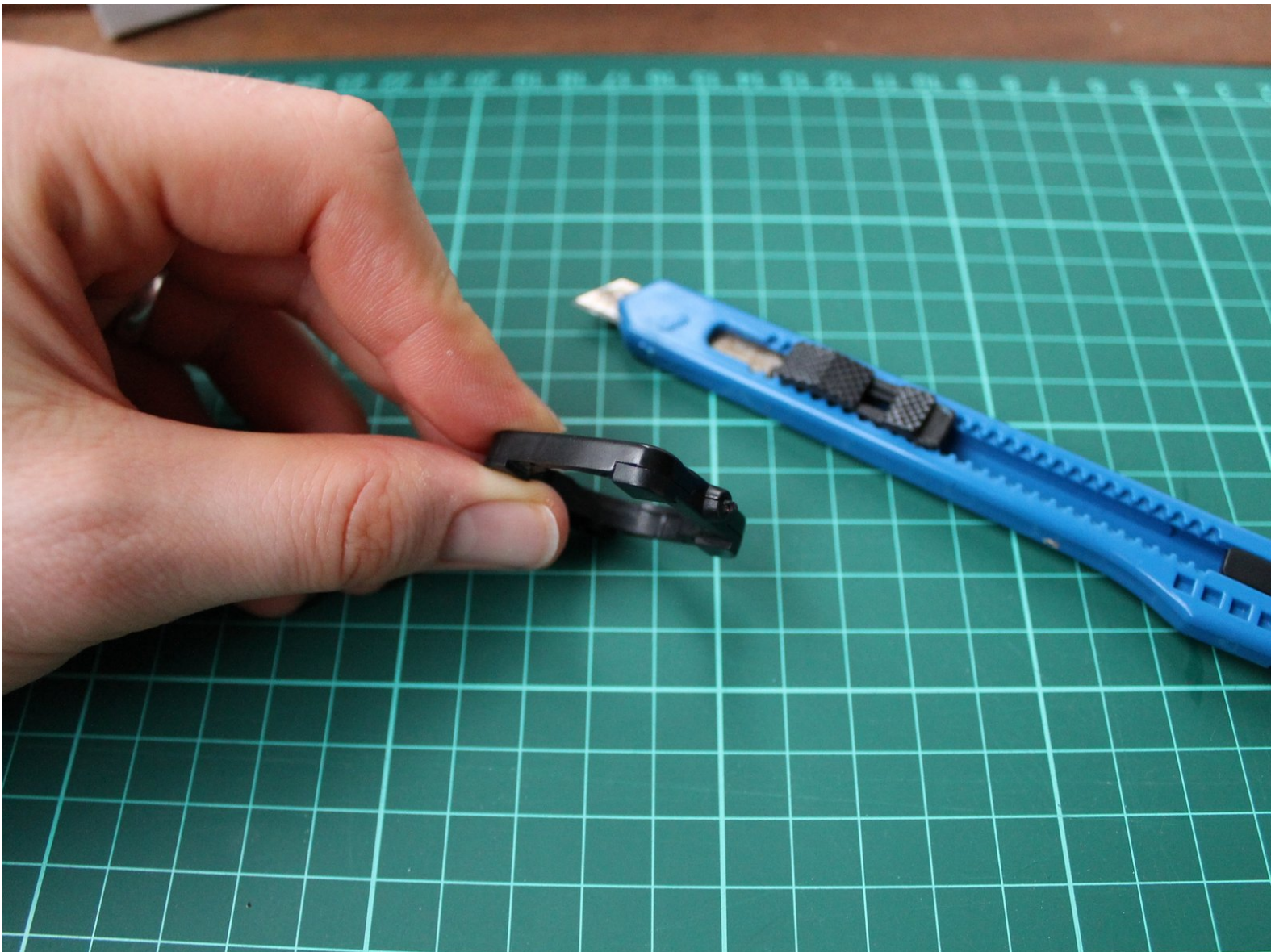




# Repairing a ripped off cable of a Sigma ATS and STS cyclometer mount

The cable of the cyclometer mount can be ripped off quite easily right before it disappears in the case. This guide explains how to fix a ripped off cable.

Written By: Baschtl



## INTRODUCTION

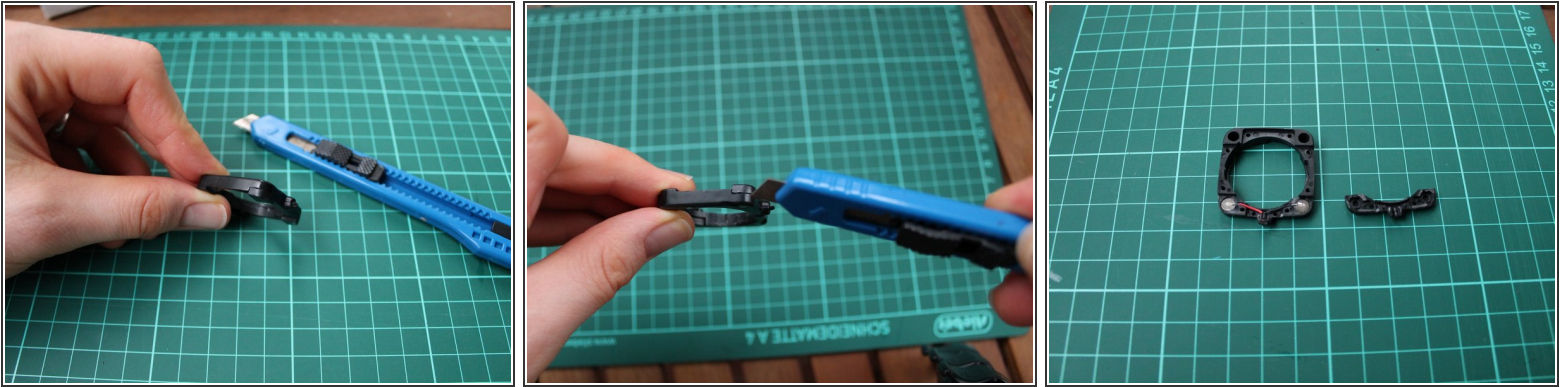
The cable of the cyclometer mount can be ripped off quiet easily right before it disappears in the case. This guide explains how to fix a ripped of cable.



### TOOLS:

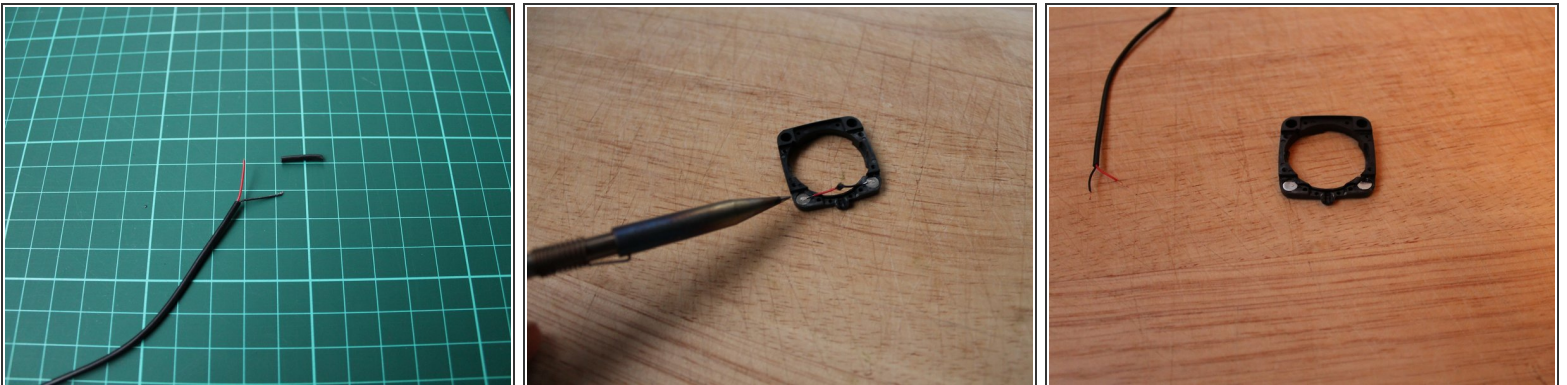
- [Super Glue](#) (1)
  - [cutter knife](#) (1)
  - [Paper Clip](#) (1)
-

## Step 1 — Remove the cap from the mount



- Use your cutter knife to pry open the small cap that hides the inner contacts.
- ⓘ You probably have to go a bit deeper into the plastic as the cap is glued to the casing.

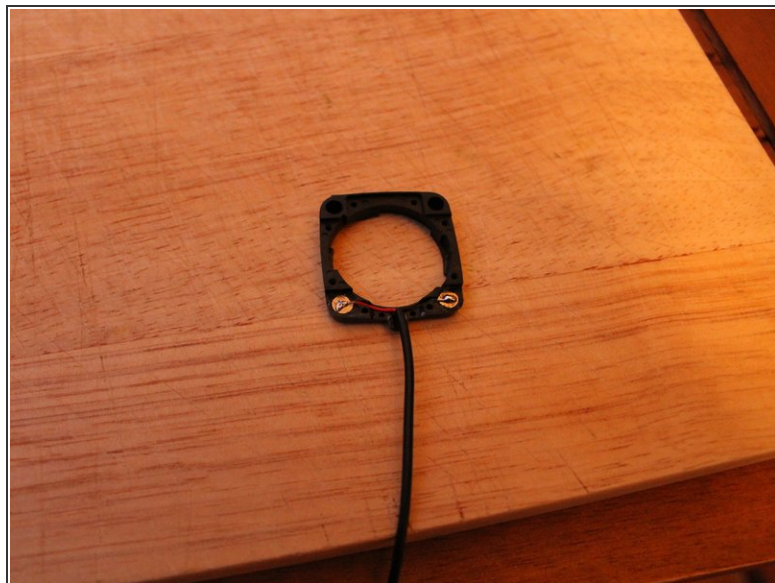
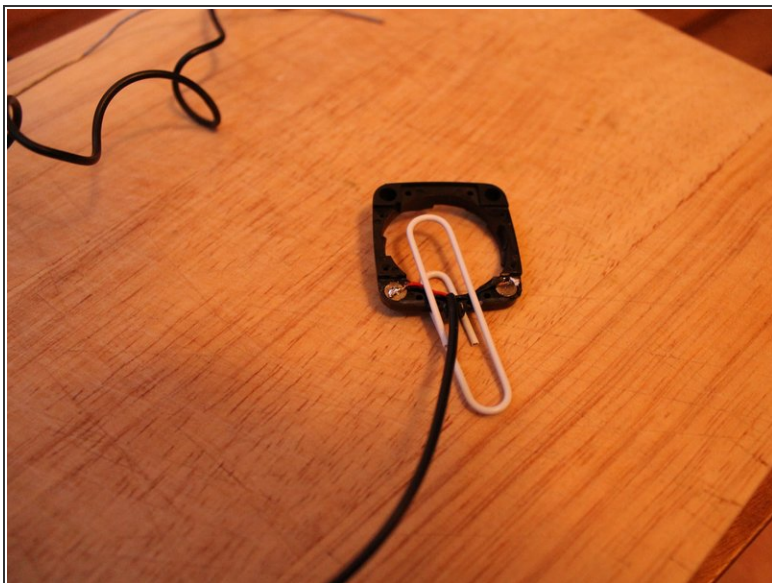
## Step 2 — Prepare the cable



- Take the remaining cable and remove some of the thick black insulation as well as some of the thin insulation as shown in the picture.
- Remove the broken cable by ripping it off carefully or using a soldering iron.



### Step 3 — Solder the cable to the contacts



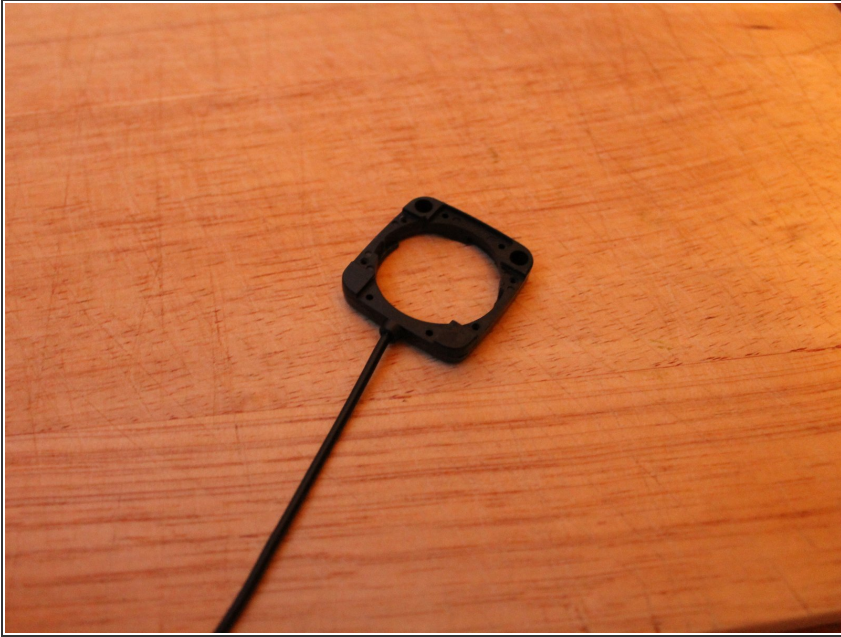
- Use the paper clip to hold the cable at the right position.

- Solder the prepared cable to the contacts.

- ☑ Remember: the red cable left, the black cable right.

⚠ The contacts take up heat of the soldering iron really fast. This can lead to the contacts melting the surrounding plastic. Hence, you have to be fast.

## Step 4 — Glue the cap to the mount



- Apply some glue to the mount and re-attach the cap to the mount.

Now go and attach the cyclometer to your bike and check that it works again.